

F.A. RTE.	SECTION	COUNTY	TOTAL SHEETS	SHEET NO.
06-00069-00-BT		COOK	24	9
STA. 31+00		TO STA. 43+50		
FED. ROAD DIST. NO.	ILLINOIS	FED. AID PROJECT		


PROP. CURVE C12
 PI STA. = 38+74.03
 $\Delta = 13^\circ 49' 36''$ (LT)
 $D = 28^\circ 38' 52''$
 $R = 200.00'$
 $T = 24.25'$
 $L = 48.26'$
 $E = 1.46'$
 $e = \text{---}$
 $T.R. = \text{---}$
 $S.E. RUN = \text{---}$
 $P.C. STA. = 38+49.78$
 $P.T. STA. = 38+98.05$

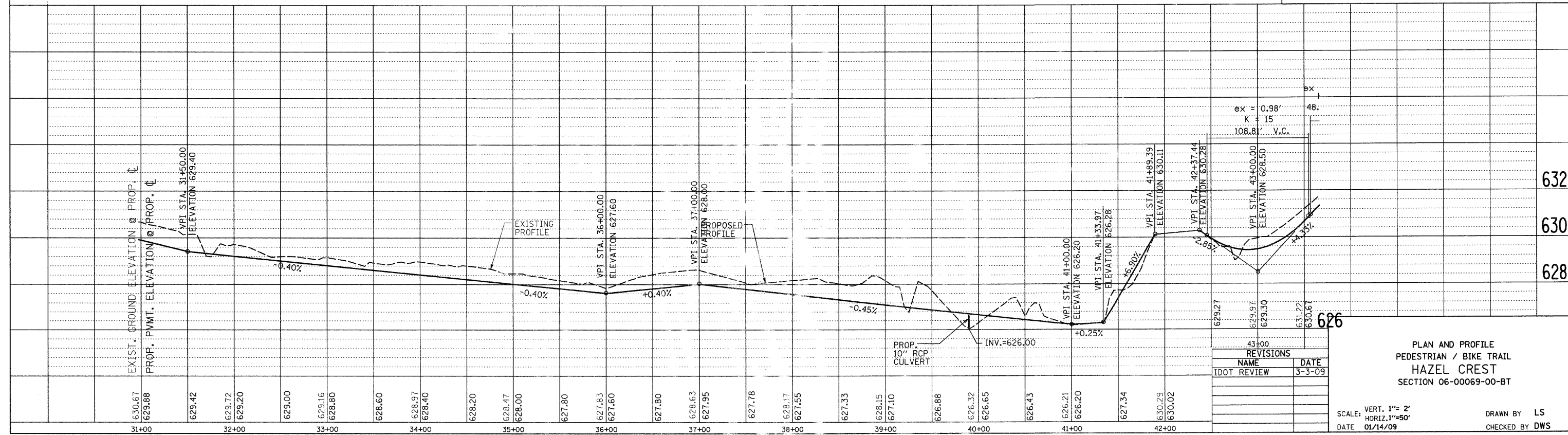
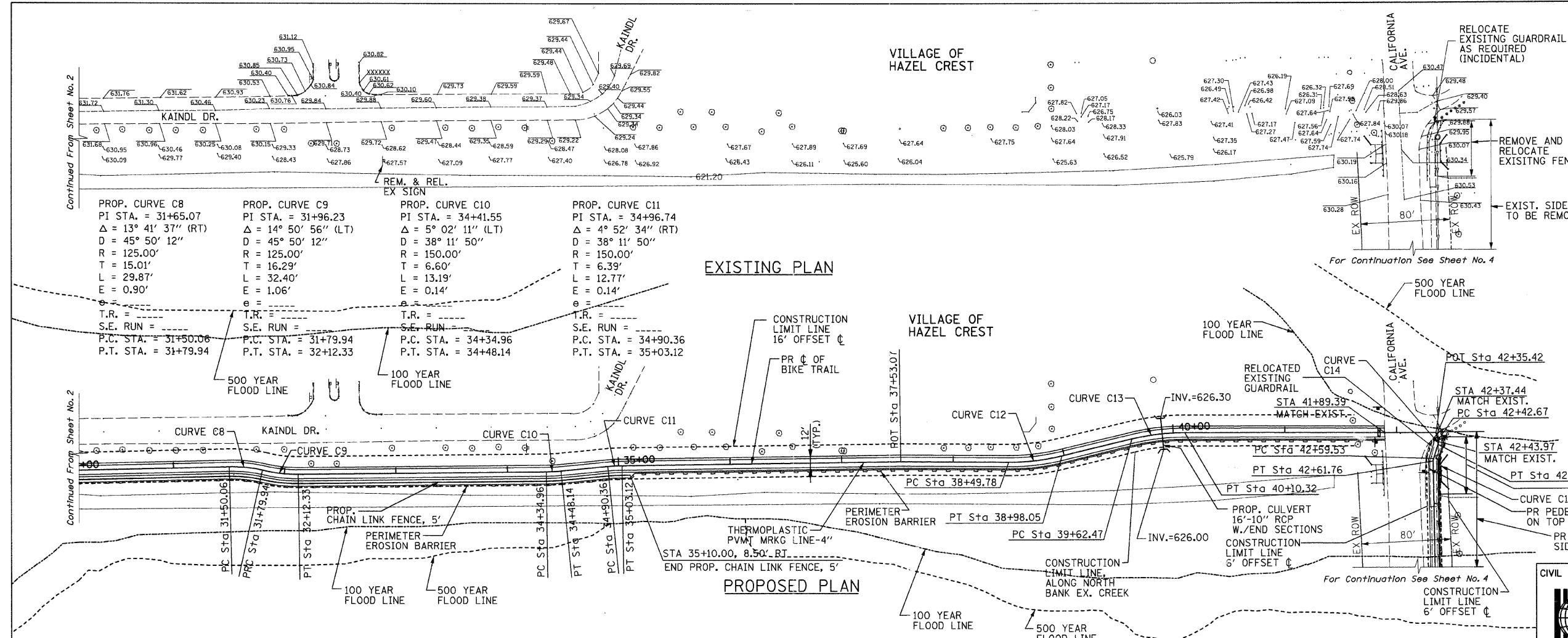
PROP. CURVE C13
 PI STA. = 39+86.51
 $\Delta = 13^\circ 42' 28''$ (RT)
 $D = 28^\circ 38' 52''$
 $R = 200.00'$
 $T = 24.04'$
 $L = 47.85'$
 $E = 1.44'$
 $e = \text{---}$
 $T.R. = \text{---}$
 $S.E. RUN = \text{---}$
 $P.C. STA. = 39+62.47$
 $P.T. STA. = 40+10.32$

PROP. CURVE C14
 PI STA. = 42+44.67
 $\Delta = 31^\circ 58' 58''$ (RT)
 $D = 18^\circ 30' 40''$
 $R = 7.00'$
 $T = 2.01'$
 $L = 3.91'$
 $E = 0.28'$
 $e = \text{---}$
 $T.R. = \text{---}$
 $S.E. RUN = \text{---}$
 $P.C. STA. = 42+42.67$
 $P.T. STA. = 42+46.57$

PROP. CURVE C15
 PI STA. = 42+60.66
 $\Delta = 18^\circ 15' 01''$ (LT)
 $D = 818^\circ 30' 40''$
 $R = 7.00'$
 $T = 1.12'$
 $L = 2.23'$
 $E = 0.09'$
 $e = \text{---}$
 $T.R. = \text{---}$
 $S.E. RUN = \text{---}$
 $P.C. STA. = 42+59.53$
 $P.T. STA. = 42+61.76$

NOTE: SEE SHT.-12 FOR DETAILS

CIVIL / STRUCTURAL ENGINEERS

 GLOBETROTTERS INTERNATIONAL.
 300 SOUTH WACKER DRIVE, SUITE 200
 CHICAGO, IL. 60606



REVISIONS	
NAME	DATE
100T REVIEW	3-3-09

PLAN AND PROFILE
 PEDESTRIAN / BIKE TRAIL
 HAZEL CREST
 SECTION 06-00069-00-BT

SCALE: VERT. 1"=2'
 HORIZ. 1"=50'
 DATE 01/14/09

DRAWN BY LS
 CHECKED BY DWS