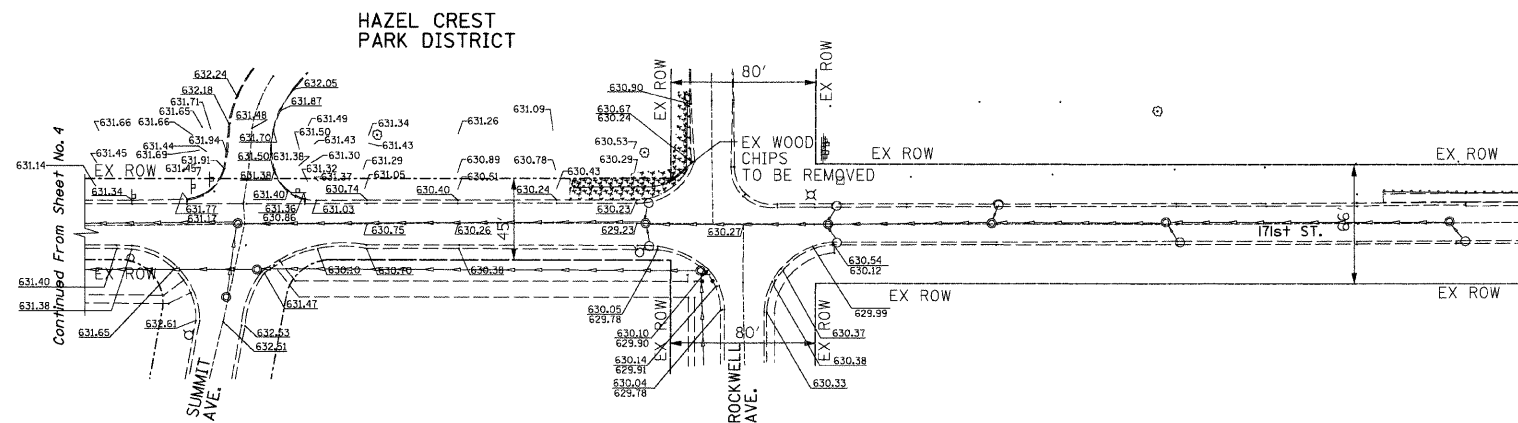
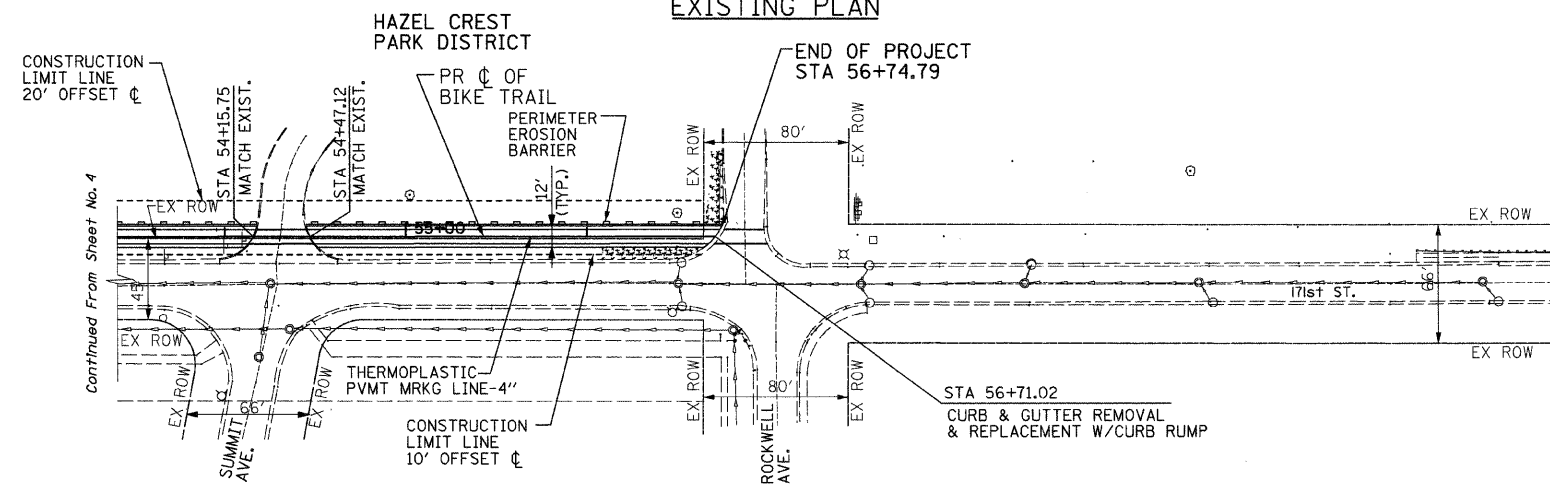


F.A. RTE.	SECTION	COUNTY	TOTAL SHEETS	SHEET NO.
	06-00069-00-BT	COOK	24	11
STA. 53+50		TO STA. 56+74.79		
FED. ROAD DIST. NO.	ILLINOIS	FED. AID PROJECT		




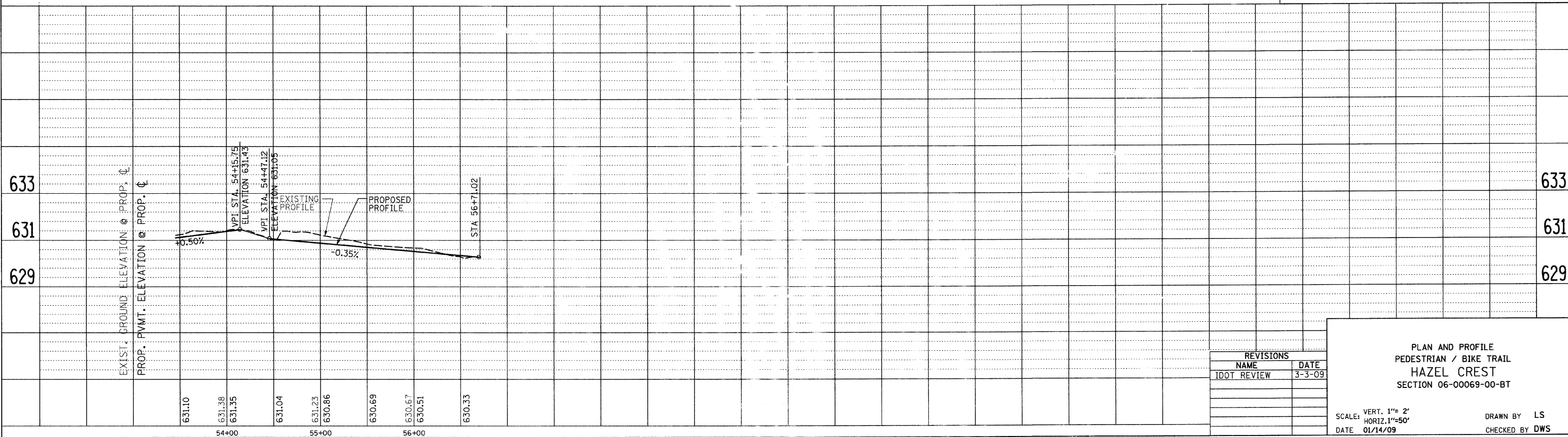
EXISTING PLAN



PROPOSED PLAN

NOTE:
SEE SHT.-12 FOR DETAILS

CIVIL / STRUCTURAL ENGINEERS

GLOBETROTTERS INTERNATIONAL.
 300 SOUTH WACKER DRIVE, SUITE 200
 CHICAGO, IL. 60606



REVISIONS	
NAME	DATE
IDOT REVIEW	3-3-09

PLAN AND PROFILE
 PEDESTRIAN / BIKE TRAIL
HAZEL CREST
 SECTION 06-00069-00-BT

SCALE: VERT. 1"= 2'
 HORIZ. 1"=50'
 DATE 01/14/09
 DRAWN BY LS
 CHECKED BY DWS