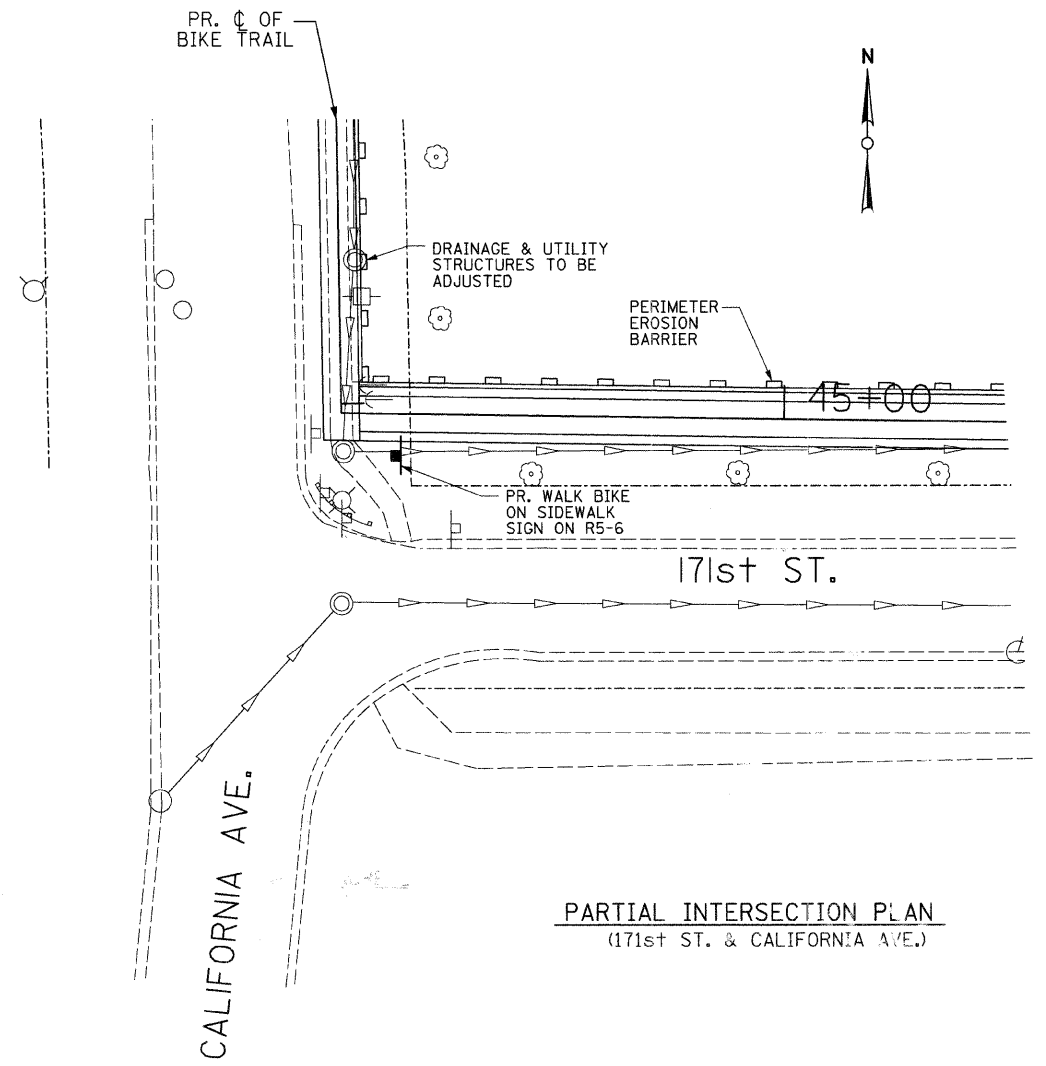



F.A. RTE.	SECTION	COUNTY	TOTAL SHEETS	SHEET NO.
	06-00069-00-BT	COOK	24	13
STA.		TO STA.		
FED. ROAD DIST. NO.		ILLINOIS		



PARTIAL INTERSECTION PLAN
(171st ST. & CALIFORNIA AVE.)

P:\cad\msv8\pen_tables\tdot.tbl Color - Monochrome
tds600-raster on fsi0.plt

CIVIL / STRUCTURAL ENGINEERS



GLOBETROTTERS INTERNATIONAL
300 SOUTH WACKER DRIVE, SUITE 200
CHICAGO, IL. 60606

REVISIONS	
NAME	DATE

REMOVAL ITEMS, PROPOSED SIGNS & PAVEMENT MARKINGS

PEDESTRIAN / BIKE TRAIL
HAZEL CREST, IL
SECTION NO. 06-00069-00-BT

SCALE: VERT. N/A
HORIZ. 1" = 200'
DATE 01/14/09

DRAWN BY L.S.
CHECKED BY D.W.S.