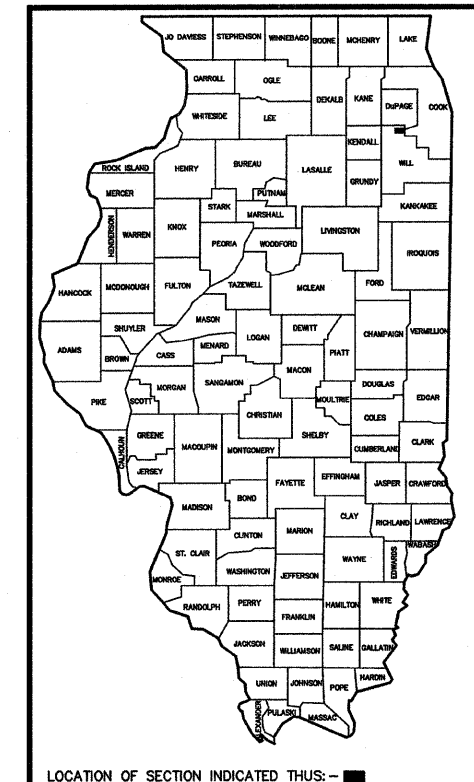


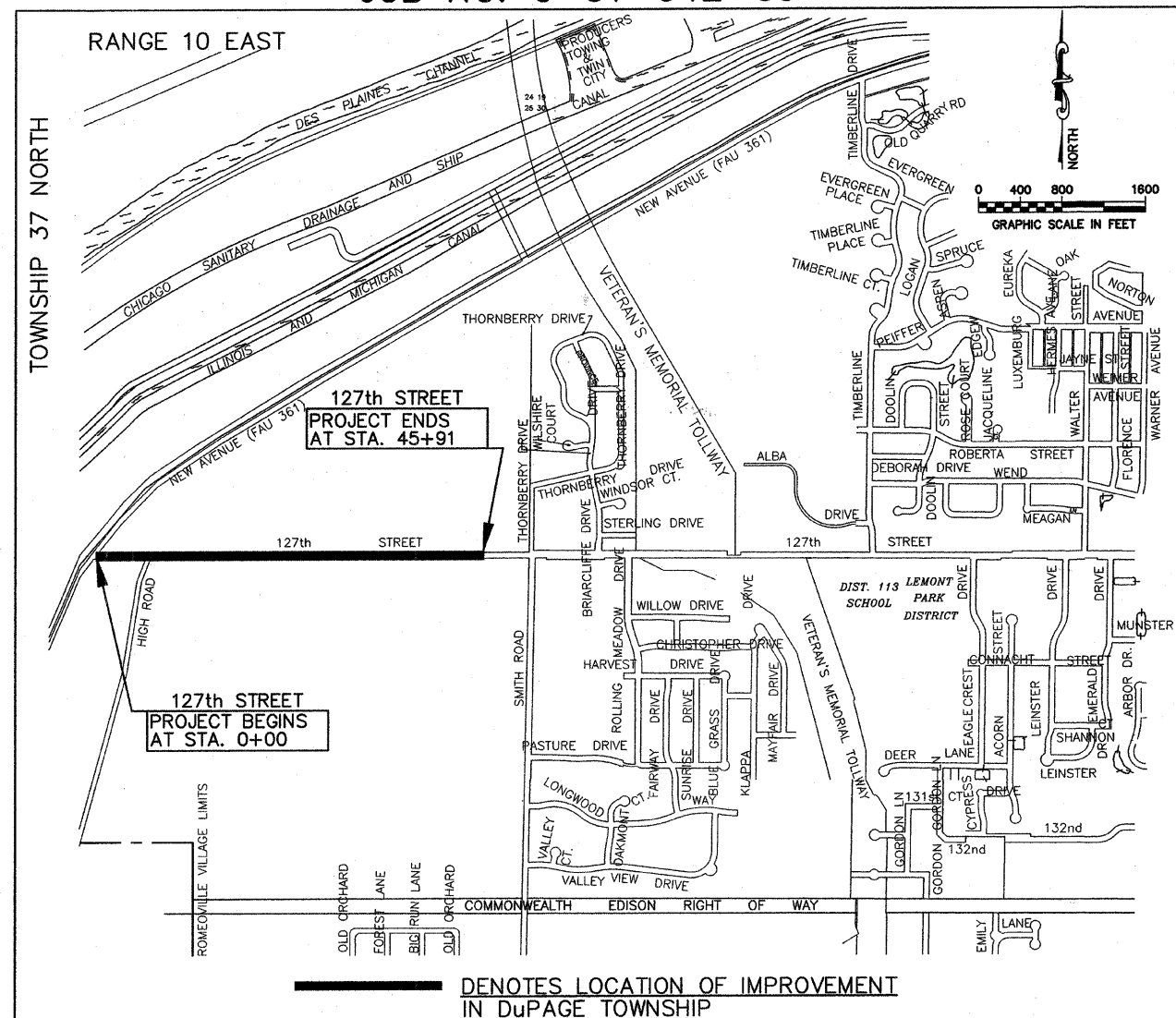
FAU RTE	SECTION	COUNTY	TOTAL SHEETS	SHEET NO.
3774	08-00045-00-RS	WILL	12	1
F.H.W.A. REG.	ILLINOIS PROJECT	M-9003(096)	CONTRACT NO. 63175	

STATE OF ILLINOIS
DEPARTMENT OF TRANSPORTATION
DIVISION OF HIGHWAYS
**PLANS FOR PROPOSED
FEDERAL AID HIGHWAY**
127TH STREET (FAU ROUTE 3774)
FROM NEW AVE. (FAU 361) TO SMITH RD.
LAPP RESURFACING
FEDERAL PROJECT M-9003 (096)
SECTION NO. 08-00045-00-RS
VILLAGE OF LEMONT
WILL COUNTY
JOB NO. C-91-042-09

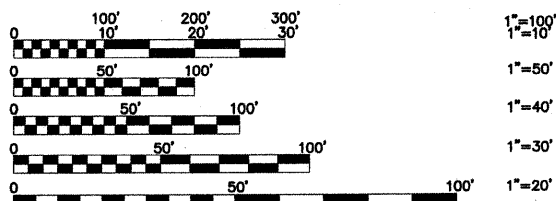


- INDEX TO SHEETS
- 1.) COVER SHEET, INDEX OF SHEETS, LOCATION MAP, INDEX OF STATE STANDARDS
 - 2.) CONSTRUCTION NOTES, SUMMARY OF QUANTITIES
 - 3.) TYPICAL CROSS SECTIONS, HOT-MIX ASPHALT MIXTURE REQUIREMENT, TYPICAL DRIVEWAY DETAIL
 - 4.) PLAN: 127th STREET (RESURFACING) - NEW AVE. TO STA. 30+00
 - 5.) PLAN: 127th STREET (RESURFACING) - STA. 30+00 TO SMITH ROAD
 - 6.) PLAN: 127th STREET (PAVEMENT MARKINGS) - NEW AVE. TO STA. 30+00
 - 7.) PLAN: 127th STREET (PAVEMENT MARKINGS) - STA. 30+00 TO SMITH ROAD
 - 8.) DISTRICT ONE TYPICAL PAVEMENT MARKINGS
 - 9.) PAVEMENT MARKING LETTERS AND SYMBOLS FOR TRAFFIC STAGING
 - 10.) TRAFFIC CONTROL AND PROTECTION FOR SIDEROADS, INTERSECTIONS, AND DRIVEWAYS
 - 11.) SIGNING FOR FLAGGING OPERATION AT WORK ZONE OPENINGS
 - 12.) BUTT JOINT AND HOT-MIX ASPHALT TAPER DETAILS

- STATE STANDARDS
- 000001-05 STANDARD SYMBOLS, ABBREVIATIONS, AND PATTERNS
 - 442201-03 CLASS C AND D PATCHES
 - 701301-03 LANE CLOSURE, 2 L, 2 W, SHORT TIME OPERATIONS
 - 701501-05 URBAN LANE CLOSURE, 2 L, 2 W UNDIVIDED
 - 701901-01 TRAFFIC CONTROL DEVICES
 - 780001-02 TYPICAL PAVEMENT MARKINGS
 - 781001-03 TYPICAL APPLICATIONS RAISED REFLECTIVE PAVEMENT MARKERS



FIELD ENGINEER: MELCHOR MANGOBA (847)705-4408
CONSULTANT: FRANK NOVOTNY AND ASSOCIATES, INC. (630)887-8640



FULL SIZE PLANS HAVE BEEN PREPARED USING STANDARD ENGINEERING SCALES. REDUCED SIZED PLANS WILL NOT CONFORM TO STANDARD SCALES. IN MAKING MEASUREMENTS ON REDUCED PLANS, THE ABOVE SCALES MAY BE USED.

STATE OF ILLINOIS
DEPARTMENT OF TRANSPORTATION
DIVISION OF HIGHWAYS

APPROVED: APRIL 2, 2009 20 09

VILLAGE PRESIDENT: John F. Piazza
JOHN F. PIAZZA, MAYOR

PASSED: APRIL 06, 2009
Chris J. ...
DISTRICT #1 ENGINEER OF LOCAL ROADS & STREETS

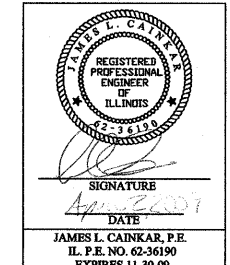
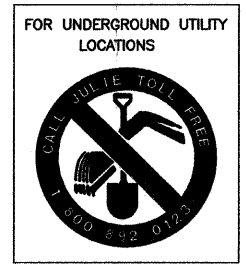
RELEASING FOR BID
BASED ON LIMITED REVIEW: APRIL 6, 2009
Diana M. O'Keefe
DEPUTY DIRECTOR OF HIGHWAYS, REGION #1 ENGINEER

PROJECT LOCATED IN THE VILLAGE OF LEMONT

PRINTED BY THE AUTHORITY OF THE STATE OF ILLINOIS

SEE SHEET 3 FOR DESIGN DETAILS

TRAFFIC DATA:
ADT (2007): 1300
POSTED SPEED LIMIT = 25 MPH
DESIGN SPEED LIMIT = 25 MPH



CONTRACT NO. 63175

REVISIONS			
NO.	BY	DATE	DESCRIPTION
1	THK	4/02/09	PER I.D.Q.T. REVIEW

LOCATION MAP
LENGTH OF PROJECT

GROSS LENGTH OF PROJECT 4575 FEET (0.8665 MILES)
NET LENGTH OF PROJECT 4575 FEET (0.8665 MILES)

Frank Novotny & Associates, Inc.
825 Midway Drive • Willowbrook, IL • 60527 • Telephone: (630) 887-8640 • Fax: (630) 887-0132
ILLINOIS PROFESSIONAL DESIGN FIRM NO. 184-000828