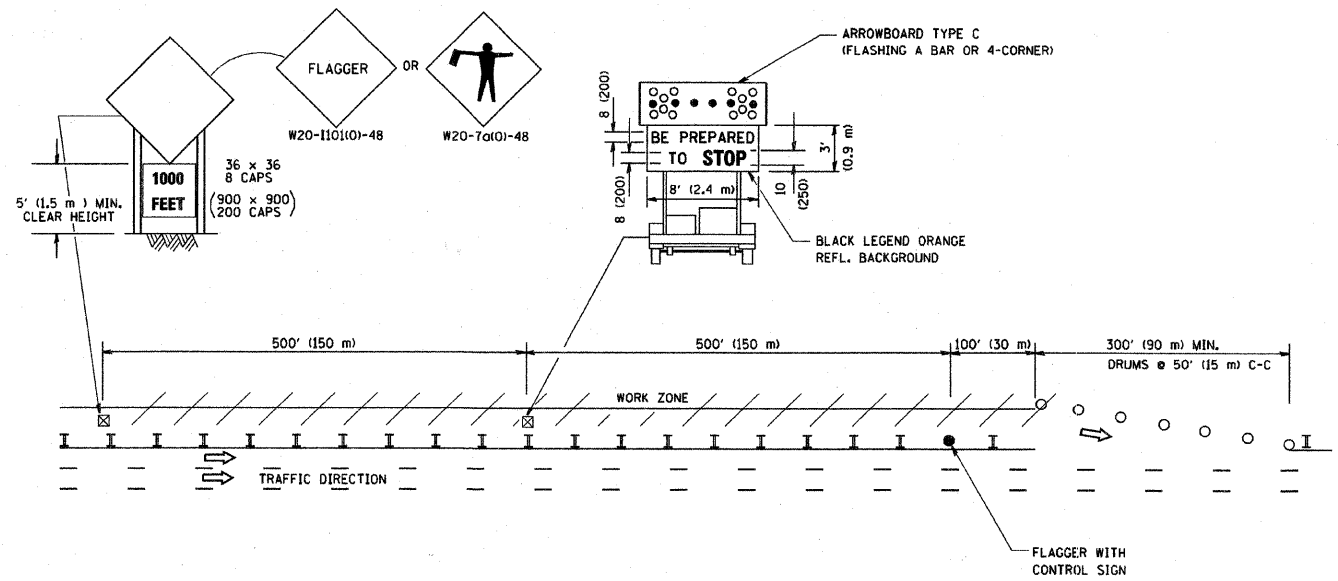


FAU RTE	SECTION	COUNTY	TOTAL SHEETS	SHEET NO.
FAU 3774	08-00045-00-RS	WILL.	12	11
F.H.W.A. REG.	ILLINOIS PROJECT	M-9003(096)		

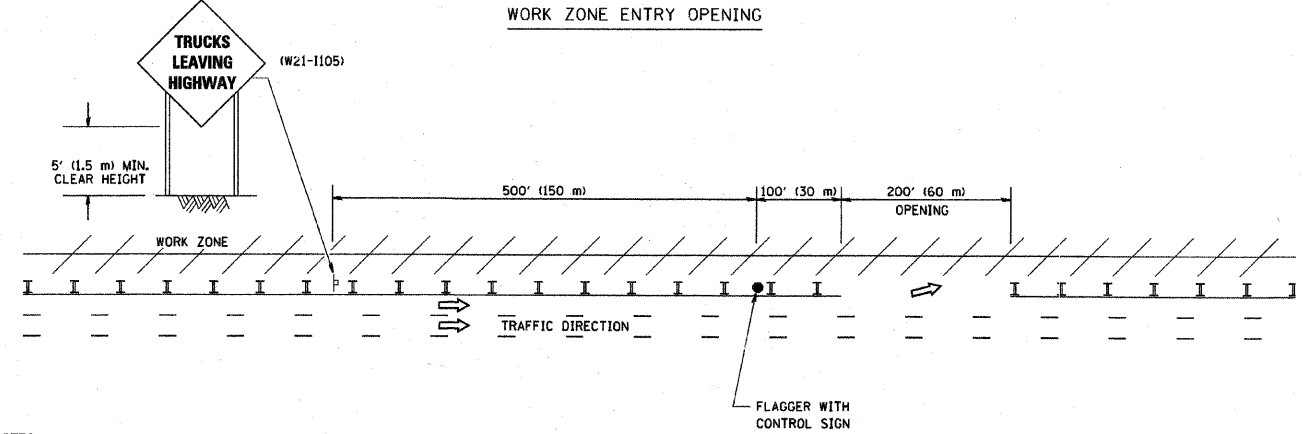
CONTRACT NO. 63175

SIGNING FOR FLAGGING OPERATIONS AT WORK ZONE OPENINGS

WORK ZONE EXIT OPENING



WORK ZONE ENTRY OPENING



NOTES:

1. The Arrowboard, the Flagger Ahead trailer mounted sign, and the Trucks Leaving Highway sign shall be removed or turned away from traffic and the exit and entry openings shall be closed when the flagging operation ceases.
2. Work Zone Exit Openings should be a minimum of one half mile apart.
3. Exiting the work zone at any place other than at a Work Zone Exit Opening will be prohibited.
4. All vehicles shall enter the work zone at entry openings, using their turn signals to warn motorists

ALL DIMENSIONS ARE IN INCHES (MILLIMETERS) UNLESS OTHERWISE SHOWN

REVISIONS	
NO.	DATE
DWS	8/98
JAF	4/03
JAF	2/06
SPB	1/07

ILLINOIS DEPARTMENT OF TRANSPORTATION
SIGNING FOR FLAGGING OPERATIONS AT WORK ZONE OPENINGS

SCALE: NONE
DRAWN BY CADD
CHECKED BY TC-18

PLT DATE = 3/7/2007
FILE NAME = KV:\data\cv\63175\Bldg
PLOT SCALE = 0.5000" = 1'-0"
USER NAME = cadd

Frank Novotny & Associates, Inc.
Civil Engineers/Municipal Consultants
825 Midway Drive ♦ Willowbrook, IL ♦ 60527 ♦ Telephone: (630) 887-8640 ♦ Fax: (630) 887-0132
Illinois Professional Design Firm No. 184-000928

PROJECT
VILLAGE OF LEMONT, ILLINOIS
127TH STREET LAPP RESURFACING
SECTION 06-00045-00-RS

REVISIONS			
NO.	BY	DATE	DESCRIPTION

SIGNING FOR FLAGGING OPERATIONS AT WORK ZONE OPENINGS

PROJECT NO. 08152	SCALE NONE	DATE FEB., 2009	SHEET 11 OF 12 SHEETS
DRAWN/DESIGNED JEP-JFP/THK	FIELD BOOK NO. FILE		
CHECKED/APPROVED JFP/JLC			