

F.A.P. R.T.E.	SECTION	COUNTY	TOTAL SHEETS	SHEET NO.
2765	08-00088-00-RS	COOK	17	1
FED. ROAD DIST. NO. 1		ILLINOIS		

CONTRACT NO. 63179

STATE OF ILLINOIS DEPARTMENT OF TRANSPORTATION DIVISION OF HIGHWAYS PLANS FOR PROPOSED FEDERAL AID HIGHWAY

LATHROP AVENUE FROM LAKE AVENUE TO NORTH AVENUE

SECTION NO. 08-00088-00-RS PROJECT NO. M-9003 (166) JOB NO. C-91-200-09 VILLAGE OF RIVER FOREST, COOK COUNTY

INDEX OF SHEETS

- 1 COVER SHEET
- 2 LEGEND, SUMMARY OF QUANTITIES AND GENERAL NOTES
- 3 TYPICAL SECTIONS
- 4-11 PLAN SHEETS
- 12-13 PAVEMENT MARKING PLAN
- 14 DETECTOR LOOP LOCATION PLAN
- 15-16 STANDARDS AND DETAILS
- 17 PAVEMENT PATCHING FOR HMA SURFACED PAVEMENT

HIGHWAY STANDARDS

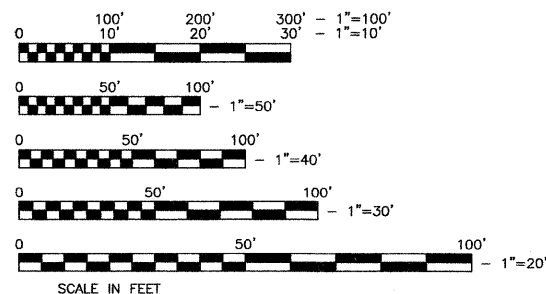
- 000001-05 STANDARD SYMBOLS ABBREVIATIONS AND PATTERNS
- 424001-05 CURB RAMPS FOR SIDEWALKS
- 442201-03 CLASS C AND D PATCHES
- 602001-01 CATCH BASIN - TYPE A
- 602301-02 INLET TYPE A
- 602401-02 MANHOLE - TYPE A
- 604001-03 FRAME AND LIDS TYPE 1
- 606001-04 CONCRETE CURB TYPE B AND COMBINATION CONCRETE CURB AND GUTTER
- 701501-05 URBAN LANE CLOSURE 2L, 2W UNDIVIDED
- 701701-06 URBAN LANE CLOSURE MULTILANE INTERSECTION
- 701801-04 LANE CLOSURE MULTILANE 1W OR 2W CROSSWALK OR SIDEWALK CLOSURE
- 701901-01 TRAFFIC CONTROL DEVICES
- 780001-02 TYPICAL PAVEMENT MARKINGS
- B.L.R. 17-4 TRAFFIC CONTROL DEVICES DAY LABOR CONSTRUCTION
- B.L.R. 22-6 TRAFFIC CONTROL DEVICES CONSTRUCTION ON RURAL OR LOCAL HIGHWAYS

TRAFFIC DATA

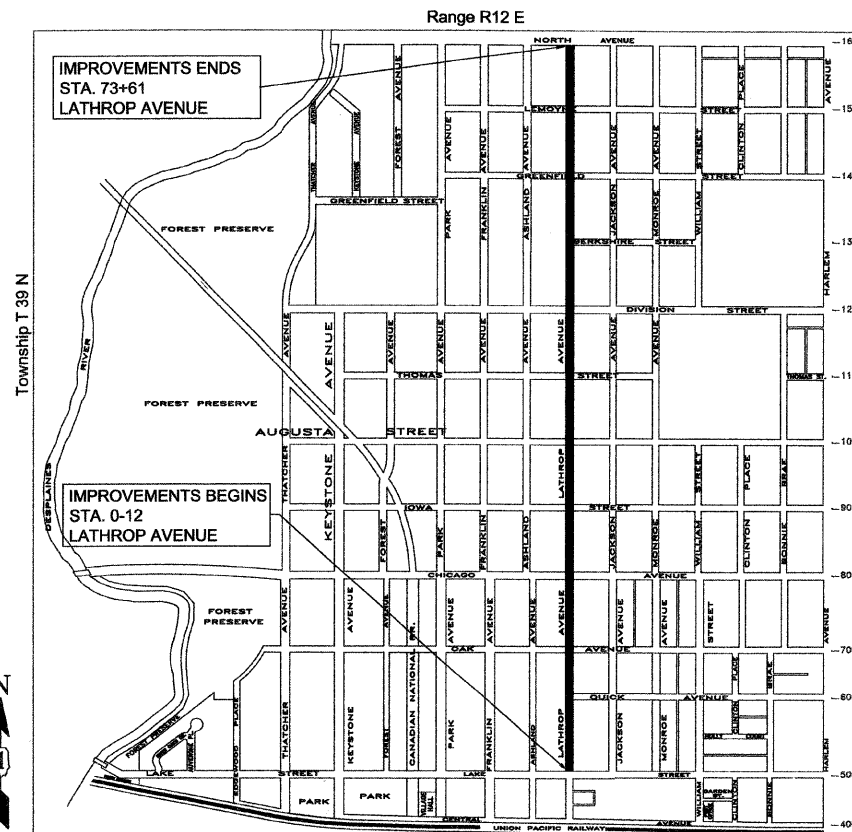
LATHROP AVENUE (BEETWEEN LAKE AND DIVISION)
ADT = 8916
YEAR TAKEN = FALL OF 2008
DESIGN DESIGNATION: COLLECTOR STREET

LATHROP AVENUE (BEETWEEN DIVISION AND NORTH)
ADT = 8246
YEAR TAKEN = FALL OF 2008
DESIGN DESIGNATION: COLLECTOR STREET

POSTED SPEED
25 M.P.H.

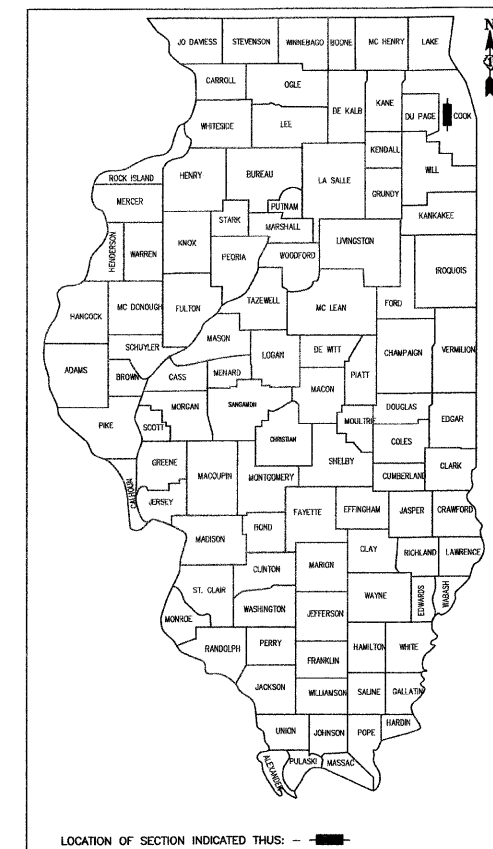


FULL SIZE PLANS HAVE BEEN PREPARED USING STANDARD ENGINEERING SCALES, REDUCED SIZE PLANS WILL NOT CONFORM TO STANDARD SCALES, IN MAKING MEASUREMENTS ON REDUCED PLANS, THE ABOVE SCALES CAN BE USED.



LOCATION MAP
N.T.S.

LENGTH OF IMPROVEMENTS
GROSS PROJECT LENGTH = 7373 FEET = 1.4 MILES
NET PROJECT LENGTH = 7209 FEET



LOCATION OF SECTION INDICATED THUS: - - -

FIELD ENGINEER: MARLIN SOLOMON (847) 705-4407

GREGORY W. KRAMER
 ILLINOIS REGISTERED PROFESSIONAL ENGINEER
 NO. 062-040597 EXPIRATION DATE: 11/30/09

STATE OF ILLINOIS
DEPARTMENT OF TRANSPORTATION
DIVISION OF HIGHWAYS

APPROVED APRIL 16 2009
Gregory W. Kramer GREGORY W. KRAMER
 DIRECTOR OF PUBLIC WORKS, VILLAGE OF RIVER FOREST

PASSED APRIL 16 2009
C. Heist CHRISTOPHER HEIST
 REGION ONE ENGINEER OF LOCALS ROADS & STREETS

RELEASING FOR BID BASED ON LIMITED REVIEW APRIL 16, 2009
Diane M. O'Keefe DE
 DEPUTY DIRECTOR OF HIGHWAYS, REGION ONE ENGINEER

PRINTED BY AUTHORITY OF THE STATE OF ILLINOIS

VILLAGE OF RIVER FOREST
 ENGINEERING DEPARTMENT
 400 PARK AVE.
 RIVER FOREST, IL 60305
 (830) 366-8500 FAX (830) 366-3702