

CONTRACT NO. 63181

STATE OF ILLINOIS
DEPARTMENT OF TRANSPORTATION
DIVISION OF HIGHWAYS

PLANS FOR PROPOSED
FEDERAL AID PROJECT

SAFE ROUTE TO SCHOOL
SIDEWALK IMPROVEMENTS PROJECT

SECTION: 08-00061-00-SW

PROJECT NO: SRTS-4008 (102)

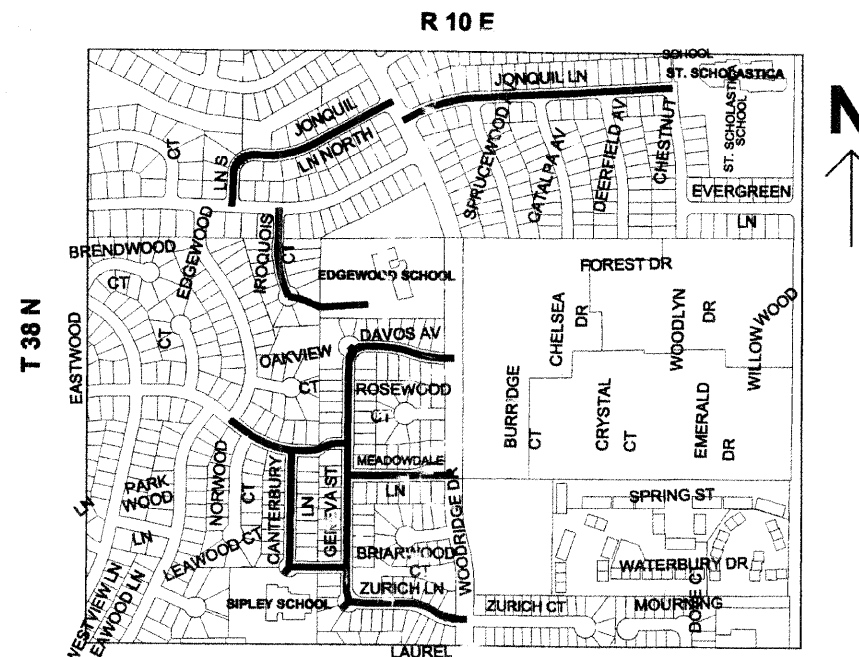
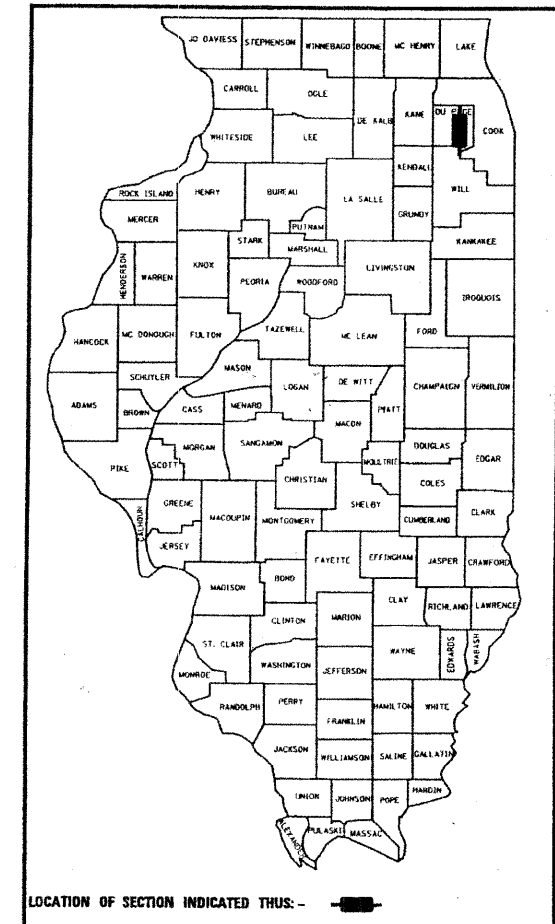
JOB NO: C-40-011-08

VILLAGE OF WOODRIDGE
DuPAGE COUNTY

INDEX OF SHEETS

SHEET #	DESCRIPTION
1	TITLE
2	GENERAL NOTES AND STANDARDS
3	SUMMARY OF QUANTITIES
4	TYPICAL CROSS SECTIONS
5	LOCATIONS
6	TC 10 TRAFFIC CONTROL STANDARD (DISTRICT 1)

HIGHWAY STANDARDS, SEE SHEET NO. 2



LOCATION MAP IS NOT TO SCALE

GROSS LENGTH = 8374 FEET (1.59 mi)
NET LENGTH = 2100 FEET (.40 mi)



STATE OF ILLINOIS
DEPARTMENT OF TRANSPORTATION
DIVISION OF HIGHWAYS

Approved April 1, 2009
Kill A. Khan
VILLAGE OF WOODRIDGE, VILLAGE ENGINEER

Passed April 6, 2009
Cheryl Chen
DISTRICT 1 ENGINEER OF LOCAL ROADS AND STREETS

Released for Bid
Based on Limited
Review April 7, 2009
Diana M. O'Keefe
DEPUTY DIRECTOR OF HIGHWAYS, REGION 1 ENGINEER

PRINTED BY THE AUTHORITY
OF THE STATE OF ILLINOIS

J.U.L.I.E.
JOINT UTILITY LOCATION INFORMATION FOR EXCAVATION
1-800-892-0123

CONTRACT NO. 63181

FIELD ENGINEER: MARILIN SOLOMON, (647) 705-4407

PLANS PREPARED BY:
THE VILLAGE OF WOODRIDGE
DEPARTMENT OF PUBLIC WORKS

GENERAL NOTES

SECTION	COUNTY	TOTAL SHEETS	SHEET NUMBER
08-00061-00-SW	DuPAGE	6	2

CONTRACT NO. 63181

SPECIFICATIONS, STANDARDS AND SPECIAL PROVISIONS:

ALL CONSTRUCTION SHALL BE PERFORMED IN ACCORDANCE WITH THE ILLINOIS DEPARTMENT OF TRANSPORTATION "STANDARD SPECIFICATIONS FOR ROAD AND BRIDGE CONSTRUCTION", ADOPTED JANUARY 1, 2007 (HEREINAFTER REFERRED TO AS THE STANDARD SPECIFICATIONS); THE "SUPPLEMENTAL SPECIFICATIONS AND RECURRING SPECIAL PROVISIONS", ADOPTED JANUARY 1, 2009; THE LATEST EDITION OF THE "ILLINOIS MANUAL ON UNIFORM TRAFFIC CONTROL DEVICES FOR STREETS, THE "DETAILS" ON THE PLANS AND THE "SPECIAL PROVISIONS" INCLUDED IN THE CONTRACT DOCUMENTS. ANY REFERENCE TO STANDARDS THROUGHOUT THE PLANS OR SPECIAL PROVISIONS SHALL BE INTERPRETED AS THE LATEST STANDARD OF THE ILLINOIS DEPARTMENT OF TRANSPORTATION.

PROJECT COORDINATION:

THE CONTRACTOR SHALL NOTIFY THE VILLAGE ENGINEER AT LEAST 72 HOURS IN ADVANCE OF BEGINNING WORK AND SHALL COORDINATE ALL CONSTRUCTION OPERATIONS WITH THE ENGINEER. ATTENTION IS CALLED TO SECTION 701 OF THE STANDARD SPECIFICATIONS AND THE SPECIAL PROVISIONS FOR TRAFFIC CONTROL AND PROTECTION. THE STORAGE OF EQUIPMENT AND OR MATERIALS WITHIN THE RIGHT-OF-WAY OF ANY STREET AND OR PARK PROPERTY SHALL REQUIRE PRIOR APPROVAL OF THE ENGINEER.

SAFETY:

ALL CONSTRUCTION PERSONNEL WILL BE REQUIRED TO WEAR FLORESCENT ORANGE, FLUORESCENT YELLOW GREEN, OR A COMBINATION OF FLORESCENT ORANGE AND FLUORESCENT GREEN YELLOW SAFETY VESTS MEETING THE REQUIREMENTS OF THE STANDARDS INSTITUTE SPECIFICATION ANSI ISEA 107-1999 FOR THE CONSPICUITY CLASS 2 GARMENTS AT ALL TIMES WHILE ON THE CONSTRUCTION SITE.

EXISTING UTILITIES:

IT SHALL BE THE CONTRACTOR'S RESPONSIBILITY TO VERIFY THE EXISTENCE, NATURE AND EXACT LOCATIONS OF ALL UTILITY LINES AND APPURTENANCES WITHIN THE LIMITS OF THE IMPROVEMENTS. THE CONTRACTOR SHALL GIVE PRIOR NOTIFICATION TO THE UTILITY COMPANIES AND THE VILLAGE OF WOODRIDGE OF HIS INTENTION TO BEGIN WORK.

THE CONTRACTOR SHALL BE RESPONSIBLE FOR ANY DAMAGE OR DESTRUCTION OF PUBLIC OR PRIVATE PROPERTY, AND SHALL RESTORE SUCH PROPERTY AT HIS HER EXPENSE.

THE CONTRACTOR SHALL BE RESPONSIBLE FOR CALLING J.U.L.I.E. AT TOLL FREE NUMBER 800-892-0123 AND THE VILLAGE OF WOODRIDGE PUBLIC WORKS DEPARTMENT AT 630-719-4753 REQUESTING UTILITY LOCATION AND STAKING 48 HOURS PRIOR TO EXCAVATION.

TRAFFIC CONTROL AND MAINTENANCE:

THE CONTRACTOR SHALL SCHEDULE HIS WORK SO THAT ONLY ONE TEMPORARY LANE CLOSURE ON ONE STREET IN ONE DIRECTION IS IMPLEMENTED AT A TIME. A LANE CLOSURE WILL ONLY BE PERMITTED DURING CONSTRUCTION OPERATIONS AND IN ACCORDANCE WITH THE APPLICABLE IDOT STANDARDS. THE CONTRACTOR SHALL FURNISH, ERECT, AND MAINTAIN ALL SIGNS, BARRICADES AND OTHER TRAFFIC CONTROL DEVICES, INCLUDING FLAGGERS, REQUIRED TO MAINTAIN TRAFFIC FLOW.

ACCESS TO ABUTTING PROPERTY SHALL BE PROVIDED AT ALL TIMES DURING CONSTRUCTION OF THIS PROJECT. TIME REQUIRED FOR CONSTRUCTION AT DRIVEWAYS SHALL BE LIMITED TO THE MINIMUM TIME REQUIRED FOR SAID CONSTRUCTION, AND IF REQUIRED, TEMPORARY AGGREGATE SURFACE FOR DRIVEWAYS SHALL BE PROVIDED.

DISPOSAL OF EXCESS MATERIAL:

ALL EXCESS MATERIAL AND ANY OTHER DEBRIS SHALL BE DISPOSED OF BY THE CONTRACTOR AT AN OFF-SITE DISPOSAL AREA.

PROTECTION OF PUBLIC PRIVATE PROPERTY:

THE CONTRACTOR SHALL PROTECT ALL EXISTING TREES, SHRUBS, FENCES, DRAIN LINES, POWER LINES, AND ALL OTHER PUBLIC PRIVATE PROPERTY. ANY ITEM THAT IS DAMAGED SHALL BE REPLACED OR REPAIRED BY THE CONTRACTOR AS DIRECTED BY THE ENGINEER AT NO ADDITIONAL COST TO THE CONTRACT.

SAW CUTTING FOR REMOVAL:

THE CONTRACTOR SHALL MAKE ALL FULL DEPTH SAW CUTS REQUIRED FOR THE REMOVAL OF SIDEWALKS AND DRIVEWAYS AS SPECIFIED, OR AS DIRECTED BY THE ENGINEER. THE COST SHALL BE CONSIDERED INCLUDED IN THE COST FOR REMOVAL OF THE SPECIFIED ITEM IN THE CONTRACT.

HOT-MIX ASPHALT DRIVEWAY PAVEMENT:

THE ITEM OF HMA DRIVEWAY PAVEMENT SHALL INCLUDE ALL SAW CUTS TO PROVIDE A NEAT, STRAIGHT PERPENDICULAR EDGE ADJACENT TO THE DRIVEWAY TO REMAIN. THE COST SHALL BE CONSIDERED INCLUDED IN THE COST FOR HMA DRIVEWAY PAVEMENT.

EXISTING STREET CLEANLINESS:

THE CONTRACTOR SHALL KEEP EXISTING ADJACENT STREETS CLEAN OF DIRT, MUD, AND OTHER DEBRIS, AND WHEN NECESSARY, CLEAN SAID PAVEMENTS ON A DAILY BASIS OR WHEN DIRECTED BY THE ENGINEER.

CLEAN-UP AND DISPOSAL:

THE CONTRACTOR SHALL MAINTAIN THE SITE IN A CLEAN AND ORDERLY MANNER. DEBRIS AND ANY SURPLUS MATERIAL SHALL BE REMOVED AND RESTORATION SHALL PROCEED AS THE WORK PROCEEDS. IF THE OWNER OR THE ENGINEER SO DIRECTS, THE CONTRACTOR SHALL STOP ALL OTHER WORK AND CONCENTRATE ON CLEAN-UP AND RESTORATION. DEBRIS AND SURPLUS MATERIAL SHALL BE DISPOSED OF BY THE CONTRACTOR OFF-SITE.

CONSTRUCTION LIMITS:

THE CONTRACTOR SHALL CONFINE OPERATIONS WITHIN THE CONSTRUCTION LIMITS OF THE PROJECT. ANY DAMAGE INSIDE AND OUTSIDE OF SAID CONSTRUCTION LIMITS SHALL BE REPAIRED AT THE CONTRACTOR'S EXPENSE.

LANDSCAPE RESTORATION:

ALL GRASS AREAS INSIDE AND OUTSIDE THE CONSTRUCTION LIMITS DAMAGED DURING CONSTRUCTION, INCLUDING AREAS ADJACENT TO SIDEWALK REMOVAL, SHALL BE RESTORED WITH A MINIMUM OF 4" PULVERIZED TOP SOIL AND SEEDING, CLASS 2A. THIS WORK SHALL BE DONE AT THE CONTRACTOR'S EXPENSE.

PROPERTY ACCESS:

DURING CONSTRUCTION, ALL SIGNS, BARRICADES, AND TEMPORARY PAVEMENT MARKINGS WILL CONFORM TO THE ILLINOIS MUTCD. VEHICULAR ACCESS TO LOCAL PROPERTIES WILL BE MAINTAINED AT ALL TIMES DURING CONSTRUCTION, EXCEPT WHEN CONSTRUCTION OPERATIONS OCCUR DIRECTLY ON OR IN FRONT OF DRIVEWAYS. IN THIS CASE, FLAG PERSONS WILL BE USED TO DIRECT AND CONTROL TRAFFIC.

BUFFALO BOX ADJUSTMENTS:

ANY B-BOX LOCATED ADJACENT TO OR WITHIN THE SIDEWALK THAT IS TO BE REPLACED WILL BE ADJUSTED TO FINAL GRADE AS NECESSARY BY THE VILLAGE OF WOODRIDGE PUBLIC WORKS DEPARTMENT.

HIGHWAY STANDARDS

STANDARD #	DESCRIPTION
000001-05	STANDARD SYMBOLS, ABBREVIATIONS AND PATTERNS
424001-05	CURB RAMPS FOR SIDEWALKS
701801-04	LANE CLOSURE MULTILANE 1W OR 2W CROSSWALK OR SIDEWALK CLOSURE
701901-01	TRAFFIC CONTROL DEVICES
701006-03	OFF-ROAD OPERATIONS 2L, 2W, 15' TO 24' FROM PAVEMENT EDGE
701011-02	OFF-ROAD MOVING OPERATIONS, 2L, 2W, DAY ONLY

VILLAGE OF WOODRIDGE PUBLIC WORKS
1 Plaza Drive, Woodridge IL 60517 (630) 719-4753

**SAFE ROUTE TO SCHOOL
SIDEWALK IMPROVEMENTS PROJECT**

GENERAL NOTES AND STANDARDS

CONTRACT NO. 63181

SUMMARY OF QUANTITIES

ITEM NO.	PAY ITEM	UNIT	IROQUOIS CT	JONQUIL LN	DAVOS AVE	GENEVA ST	ZURICH LN	MEADOWDALE LN	CANTERBURY LN	EDGEWOOD PKWY	TOTAL
42400200	P.C.C. SIDEWALK, 5 INCH	SQUARE FEET	1,390	3,170	320	1,040	400	420	1,300	360	8,400
42400800	DETECTABLE WARNINGS	SQUARE FEET	0	40	0	0	0	0	20	40	100
44000600	SIDEWALK REMOVAL	SQUARE FEET	1,390	3,170	320	1,040	400	420	1,300	360	8,400
67100100	MOBILIZATION	L SUM									1
70102640	TRAFFIC CONTROL AND PROTECTION	L SUM									1
XX006806	HMA DRIVEWAY PVT	SQUARE YARD	6	18	10	20	20	6	10	10	100

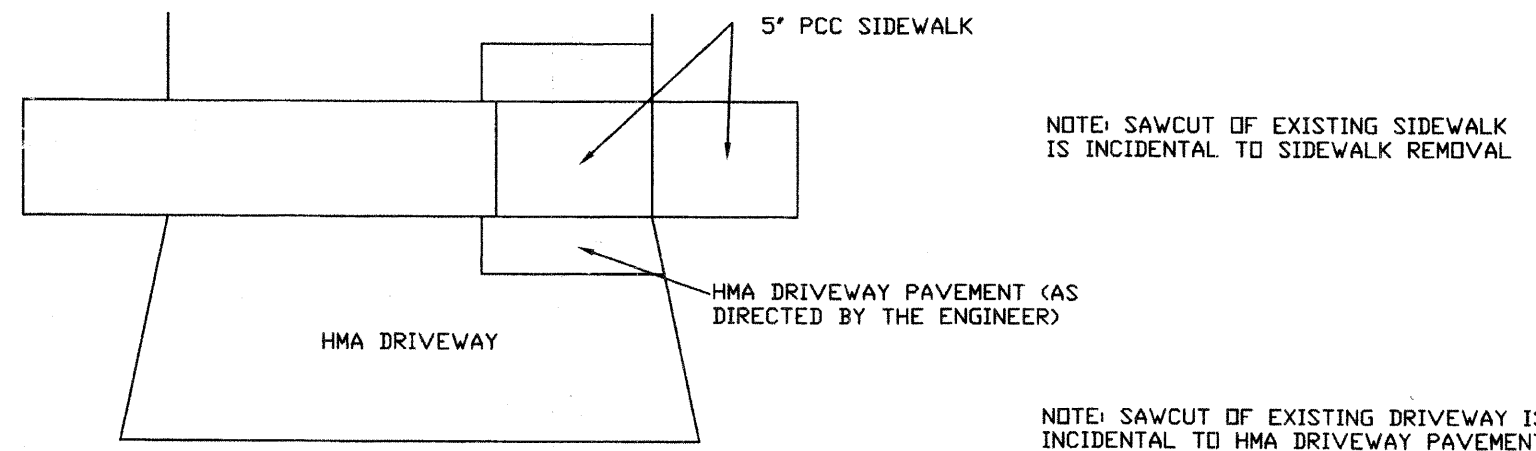
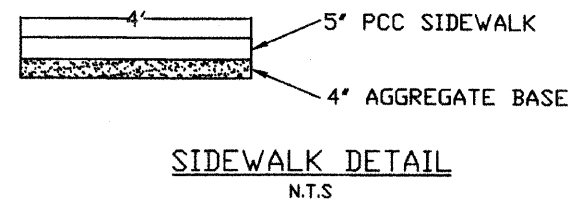
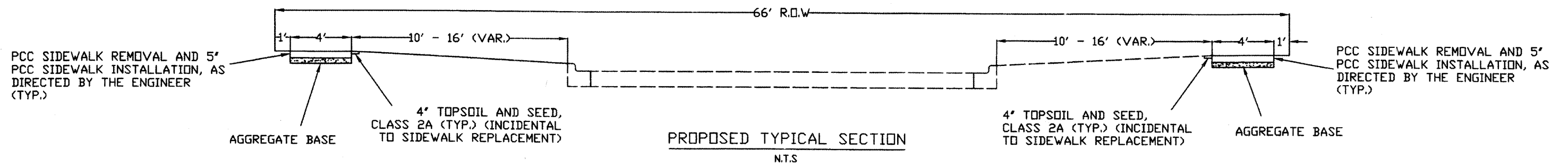
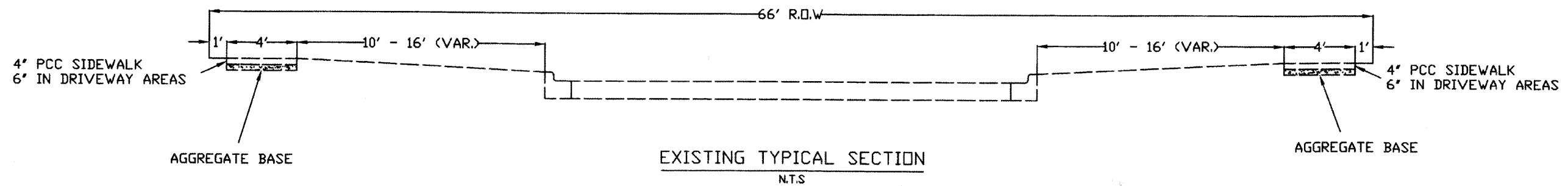
*** DENOTES SPECIALTY ITEM(S)**

VILLAGE OF WOODRIDGE PUBLIC WORKS
 1 Plaza Drive, Woodridge IL 60517 (630) 719-4753

**SAFE ROUTE TO SCHOOL
 SIDEWALK IMPROVEMENTS PROJECT**

SUMMARY OF QUANTITIES

CONTRACT NO. 63181



HOT-MIX ASPHALT MIXTURE REQUIREMENTS:

MIXTURE TYPE	AC TYPE	AIR VOIDS
HMA DRIVEWAY PAVEMENT HOT-MIX ASPHALT SURFACE COURSE, MIX "C", N50 (IL 9.5mm);	PG 64-22	4% @ 50 GYR

THE UNIT WEIGHT USED TO CALCULATE ALL HMA SURFACE MIXTURE QUANTITIES IS 112 LBS/SW YD/IN

VILLAGE OF WOODRIDGE PUBLIC WORKS
1 Plaza Drive, Woodridge IL 60517 (630) 719-4753

**SAFE ROUTE TO SCHOOL
SIDEWALK IMPROVEMENTS PROJECT**

TYPICAL CROSS SECTIONS

SECTION	COUNTY	TOTAL SHEETS	SHEET NUMBER
08-00061-00-SW	DuPAGE	6	5

CONTRACT NO. 63181



LOCATIONS

NOTE INDIVIDUAL LOCATIONS OF SIDEWALK REMOVAL AND REPLACEMENT WILL BE DETERMINED IN THE FIELD BY THE ENGINEER AND MARKED PRIOR TO CONSTRUCTION.

IROQUOIS COURT - (EVERGLADE AVE TO END)
 GROSS LENGTH = 490 FEET, PROPOSED SIDEWALK REMOVAL AND PLACEMENT 1390 SQ FT. SIDEWALK LOCATED ON BOTH SIDES OF STREET.

JONQUIL LANE - (EVERGLADE AVE TO CHESTNUT AVE)
 GROSS LENGTH = 2694 FEET, PROPOSED SIDEWALK REMOVAL AND PLACEMENT 3170 SQ FT. SIDEWALK LOCATED ON BOTH SIDES OF STREET.

DAVOS AVENUE - (GENEVA ST TO WOODRIDGE DR)
 GROSS LENGTH = 604 FEET, PROPOSED SIDEWALK REMOVAL AND PLACEMENT 320 SQ FT. SIDEWALK LOCATED ON BOTH SIDES OF STREET.

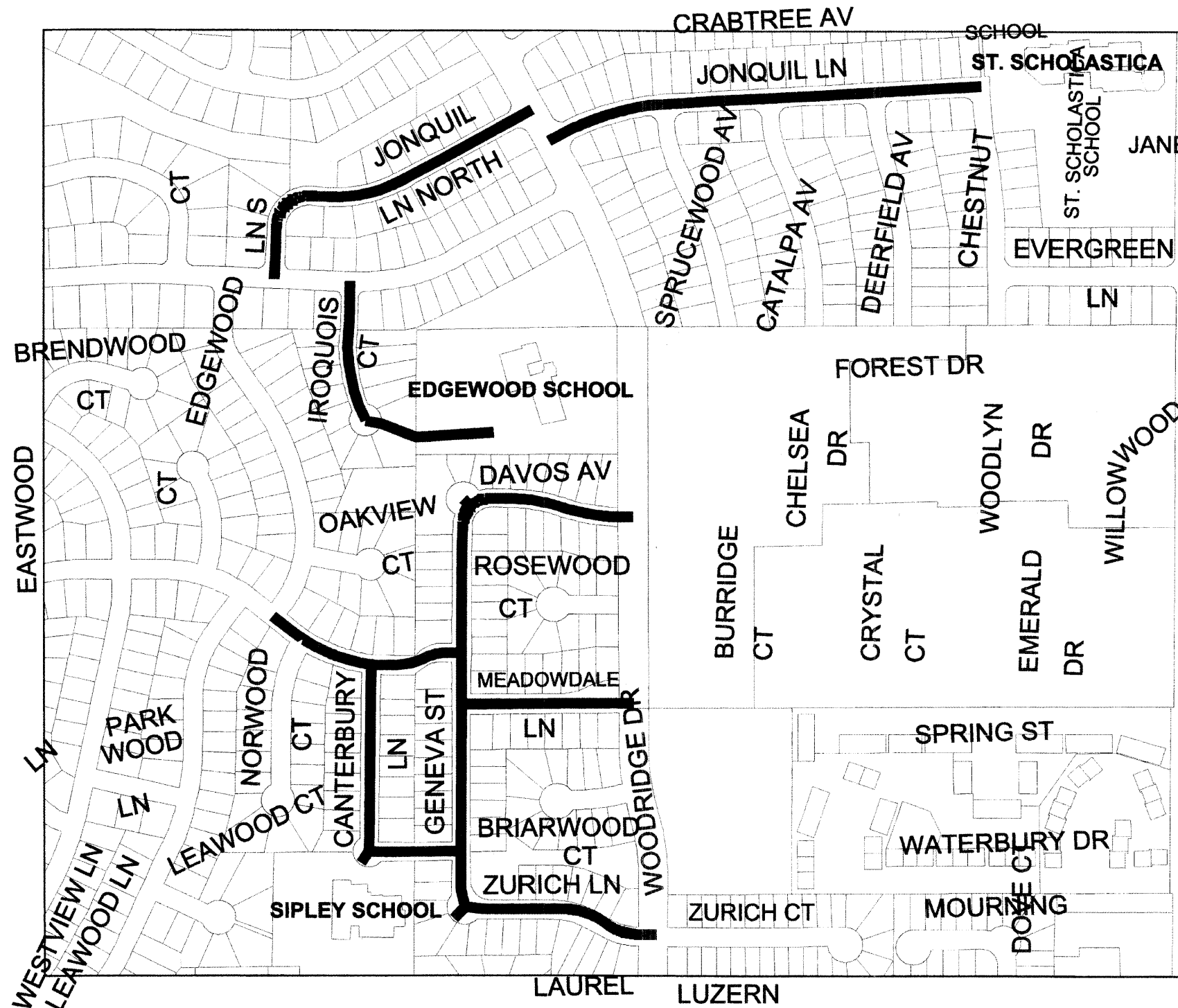
GENEVA STREET - (DAVOS AVE TO ZURICH LN)
 GROSS LENGTH = 1391 FEET, PROPOSED SIDEWALK REMOVAL AND PLACEMENT 1040 SQ FT. SIDEWALK LOCATED ON BOTH SIDES OF STREET.

ZURICH LANE - (GENEVA ST TO WOODRIDGE DR)
 GROSS LENGTH = 1396 FEET, PROPOSED SIDEWALK REMOVAL AND PLACEMENT 400 SQ FT. SIDEWALK LOCATED ON BOTH SIDES OF STREET.

MEADOWDALE LANE - (GENEVA ST TO WOODRIDGE DR)
 GROSS LENGTH = 588 FEET, PROPOSED SIDEWALK REMOVAL AND PLACEMENT 420 SQ FT. SIDEWALK LOCATED ON BOTH SIDES OF STREET.

CANTERBURY LANE - (EDGEWOOD PKWY TO GENEVA ST)
 GROSS LENGTH = 644 FEET, PROPOSED SIDEWALK REMOVAL AND PLACEMENT 1300 SQ FT. SIDEWALK LOCATED ON BOTH SIDES OF STREET.

EDGEWOOD PARKWAY - (OAKVIEW LN TO GENEVA ST)
 GROSS LENGTH = 567 FEET, PROPOSED SIDEWALK REMOVAL AND PLACEMENT 360 SQ FT. SIDEWALK LOCATED ON BOTH SIDES OF STREET.



LOCATION MAP IS NOT TO SCALE

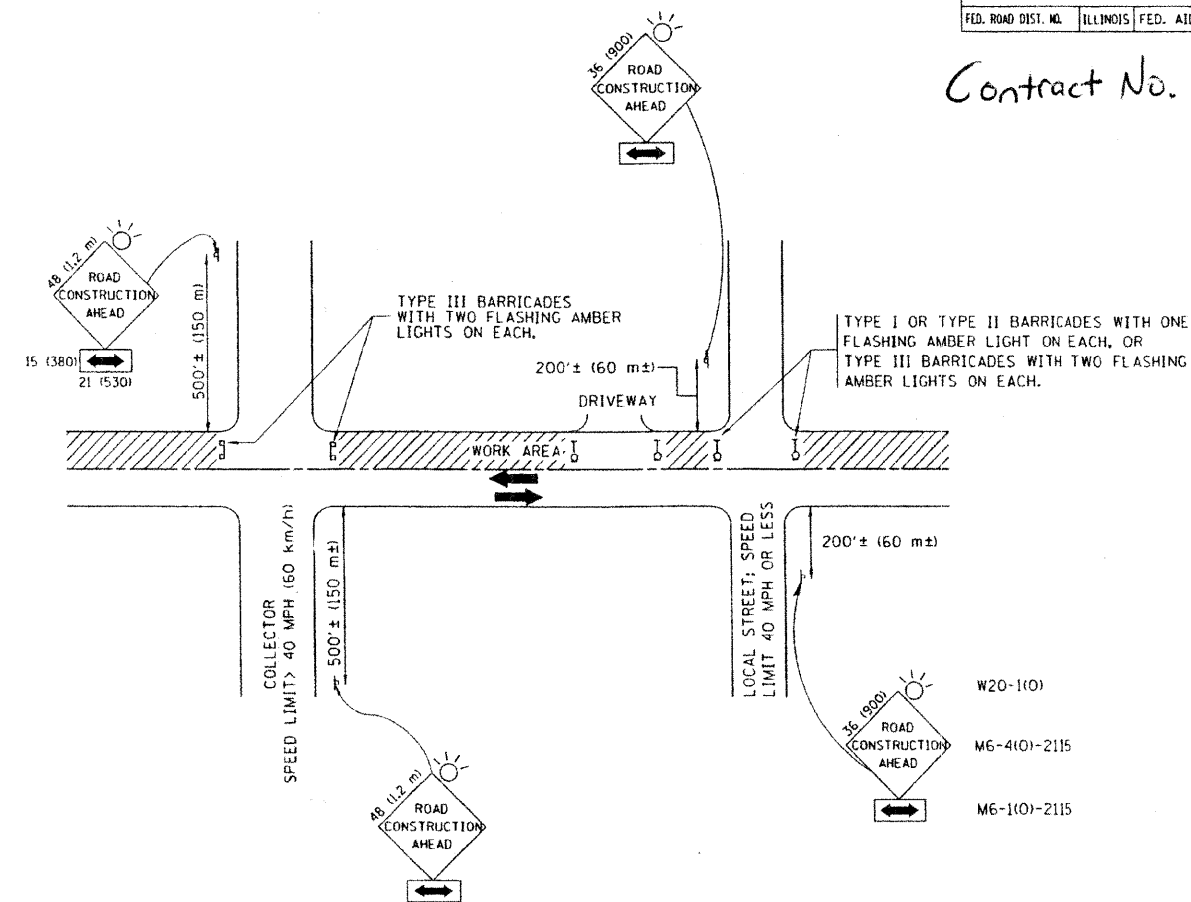
VILLAGE OF WOODRIDGE PUBLIC WORKS
 1 Plaza Drive, Woodridge IL 60517 (630) 719-4753

**SAFE ROUTE TO SCHOOL
 SIDEWALK IMPROVEMENTS PROJECT**

PROJECT LOCATIONS

CONTRACT NO.				
F.A. RTE.	SECTION	COUNTY	TOTAL SHEETS	SHEET NO.
			6	6
STA.		TO STA.		
FED. ROAD DIST. NO.	ILLINOIS	FED. AID PROJECT		

Contract No. 63181



TRAFFIC CONTROL AND PROTECTION FOR SIDE ROADS, INTERSECTIONS, AND DRIVEWAYS

NOTES:

A. FOR NO LANE RESTRICTION ON THE SIDE ROAD OR DRIVEWAYS

1. SIDE ROAD WITH A SPEED LIMIT OF 40 MPH (60 km/h) OR LESS AS SHOWN ON THE DRAWING AND AS DIRECTED BY THE ENGINEER:

a) ONE ROAD CONSTRUCTION AHEAD SIGN 36 x 36 (900x900) WITH A FLASHER AND FLAG MOUNTED ON IT APPROXIMATELY 200' (60 m) IN ADVANCE OF THE MAIN ROUTE.

b) THE CLOSED PORTION OF THE MAIN ROUTE SHALL BE PROTECTED BY BLOCKING WITH TYPE I, TYPE II OR TYPE III BARRICADES, 1/3 OF THE CROSS SECTION OF THE CLOSED PORTION.

2. SIDE ROAD WITH A SPEED LIMIT GREATER THAN 40 MPH (60 km/h) AS SHOWN ON THE DRAWING AND AS DIRECTED BY THE ENGINEER:

a) ONE ROAD CONSTRUCTION AHEAD SIGN 48 x 48 (1.2 m x 1.2 m) WITH A FLASHER MOUNTED ON IT APPROXIMATELY 500' (150 m) IN ADVANCE OF THE MAIN ROUTE.

b) THE CLOSED PORTION OF THE MAIN ROUTE SHALL BE PROTECTED BY BLOCKING WITH TYPE III BARRICADES, 1/2 OF THE CROSS SECTION OF THE CLOSED PORTION.

3. WHEN THE SIDE ROAD LIES BETWEEN THE BEGINNING OF THE MAINLINE SIGNING AND THE WORK ZONE, A SINGLE HEADED ARROW (M6-1) SHALL BE USED IN LIEU OF THE DOUBLE HEADED ARROW (M6-4).

B. FOR A LANE CLOSURE ON A SIDE ROAD OR DRIVEWAY:

USE APPLICABLE PORTIONS OF THE TYPICAL APPLICATION OF TRAFFIC CONTROL DEVICES (STD. 701501, STD. 701606 OR THE APPROPRIATE STANDARD). THE SPACING OF SIGNS AND BARRICADES SHALL BE ADJUSTED FOR FIELD CONDITIONS AS DIRECTED BY THE ENGINEER. THE DIRECTIONAL ARROW SHALL BE COVERED OR REMOVED WHEN NO LONGER CONSISTENT WITH THE SIDE ROAD LANE CLOSURE.

C. ADVANCE WARNING SIGNS ARE TO BE OMITTED ON DRIVEWAY UNLESS OTHERWISE NOTED.

D. THE TRAFFIC CONTROL AND PROTECTION FOR SIDE ROADS, INTERSECTIONS, AND DRIVEWAYS SHALL BE INCIDENTAL TO THE COST OF SPECIFIED TRAFFIC CONTROL STANDARDS OR ITEMS.

All dimensions are in millimeters (inches) unless otherwise shown.

REVISIONS	
NAME	DATE
LHA	6/89
T. RAMMACHER	09/08/94
J. OBERLE	10/18/95
A. HOUSEH	03/06/96
A. HOUSEH	10/15/96
T. RAMMACHER	01/06/00

ILLINOIS DEPARTMENT OF TRANSPORTATION
TRAFFIC CONTROL AND PROTECTION FOR SIDE ROADS, INTERSECTIONS, AND DRIVEWAYS

SCALE: NONE

DRAWN BY

CHECKED BY

TC-10

PLOT DATE: 3/6/2007
 FILE NAME: K:\data\std\std10.dgn
 USER: BUBBE / IN.
 USER NAME: BUBBE