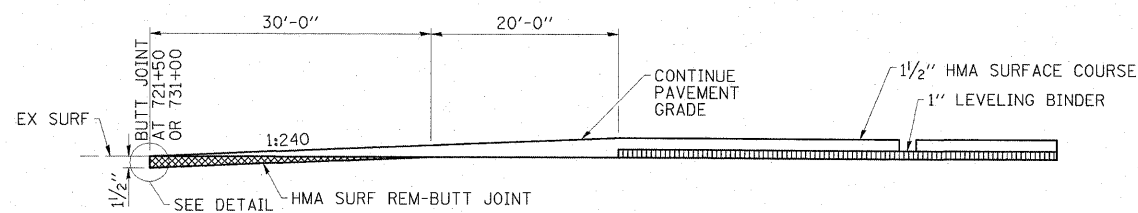
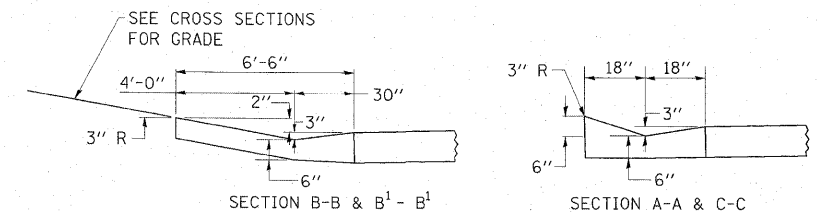
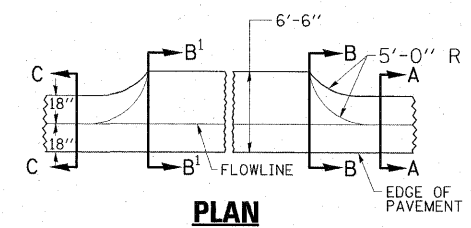
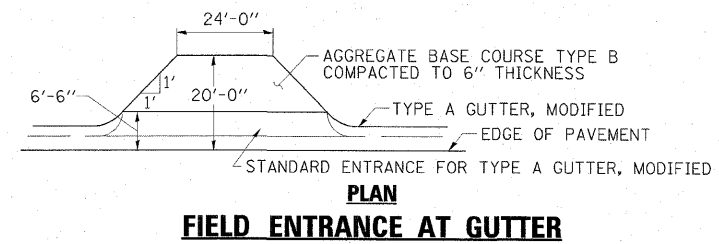


FIELD ENTRANCE AT HMA SHOULDER



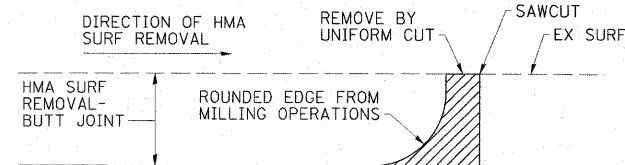
TYPICAL BUTT JOINT SECTION
SN 037-0172



NOTE:
THE GUTTER ENTRANCE WILL BE PAID FOR AT THE CONTRACT UNIT PRICE PER CUBIC YARD FOR CLASS SI CONCRETE (OUTLET)

QUANTITIES

SECTION B-B TO B¹-B¹ = 0.13 CU. YD. PER LINEAL FOOT
SECTION C-C TO B¹-B¹ + B-B TO A-A = 0.85 CU. YD.



DETAIL AT BUTT JOINT

NOTE:
WHEN MILLING OPERATIONS PRODUCE A ROUNDED EDGE, THEN A SAWCUT SHALL BE USED TO MANUFACTURE A PERPENDICULAR EDGE AS SHOWN IN THE DETAIL. THE COST OF ALL WORK SHOWN IN THE DETAIL IS INCLUDED IN HOT-MIX ASPHALT SURFACE REMOVAL - BUTT JOINT. THE ENGINEER SHALL BE THE SOLE JUDGE CONCERNING THE USE OF THIS DETAIL.

FILE NAME = D264428-sht-detail1.dgn	USER NAME = HAS	DESIGNED - JMS	REVISED -
		DRAWN - JPC	REVISED -
		CHECKED - ELH	REVISED -
		DATE - 03/13/09	REVISED -

STATE OF ILLINOIS
DEPARTMENT OF TRANSPORTATION

MISCELLANEOUS DETAILS

SCALE: VARIOUS SHEET NO. 1 OF 1 SHEETS STA. TO STA.

F.A.P. RTE. 638	SECTION 136BR-1	COUNTY HENRY	TOTAL SHEETS 67	SHEET NO. 39
CONTRACT NO. 64428				
FED. ROAD DIST. NO. ILLINOIS FED. AID PROJECT				