

Bench Mark:
Cut square in SE Wingwall on existing bridge, Sta. 1038+15.56, Offset 24.25 RT, Elev. = 633.60

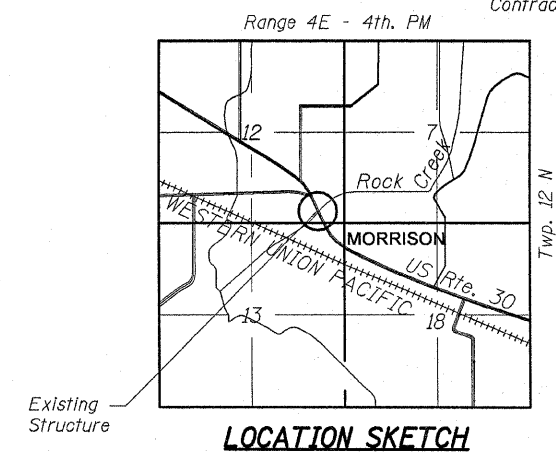
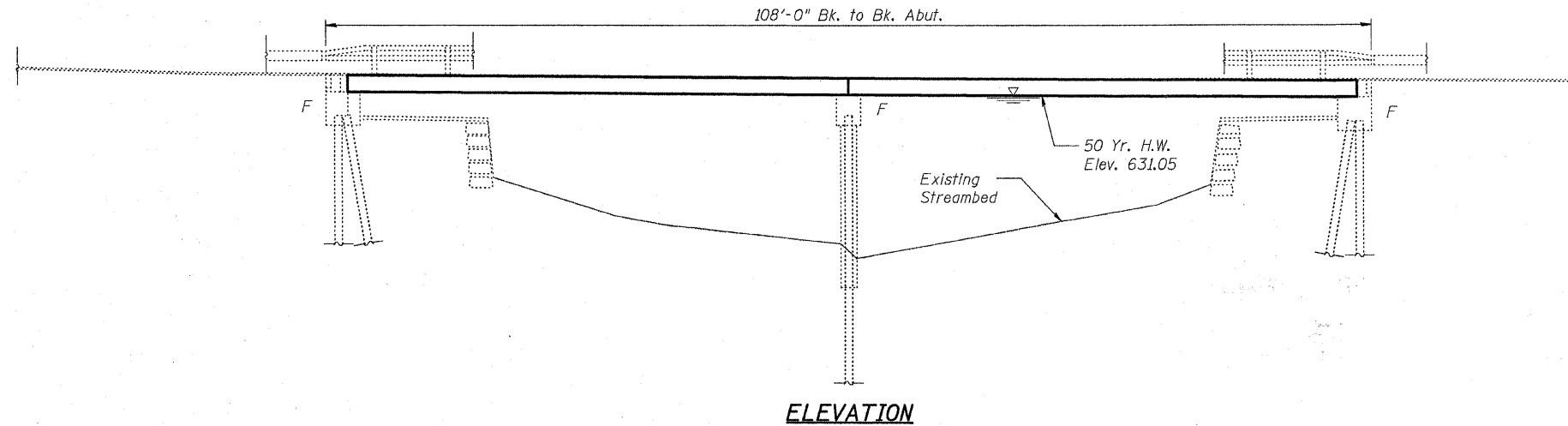
STATE OF ILLINOIS
DEPARTMENT OF TRANSPORTATION

Sheet R1 of R9

F.A.P. RTE.	SECTION	COUNTY	TOTAL SHEETS	SHEET NO.
309	17B-1	WHITESIDE	376	42
FED. ROAD DIST. NO. 2 ILLINOIS FED. AID PROJECT			Contract #64B74	

Existing Structure:
Structure No. 098-0053 was originally constructed in 1971 as a 2-span PPC deck beam bridge supported on pile bent abutments and a center pile bent pier. The structure length is 108'-0" (Bk. to Bk. Abut.) and the width is 33'-0" (O. to O.). The substructure is normal to the superstructure (no skew).

Notes:
1. Road shall be kept open to traffic at all times by utilizing stage construction. During Stage I and Stage II, one lane of alternating traffic will be provided with the use of temporary traffic signals.
2. No Salvage.

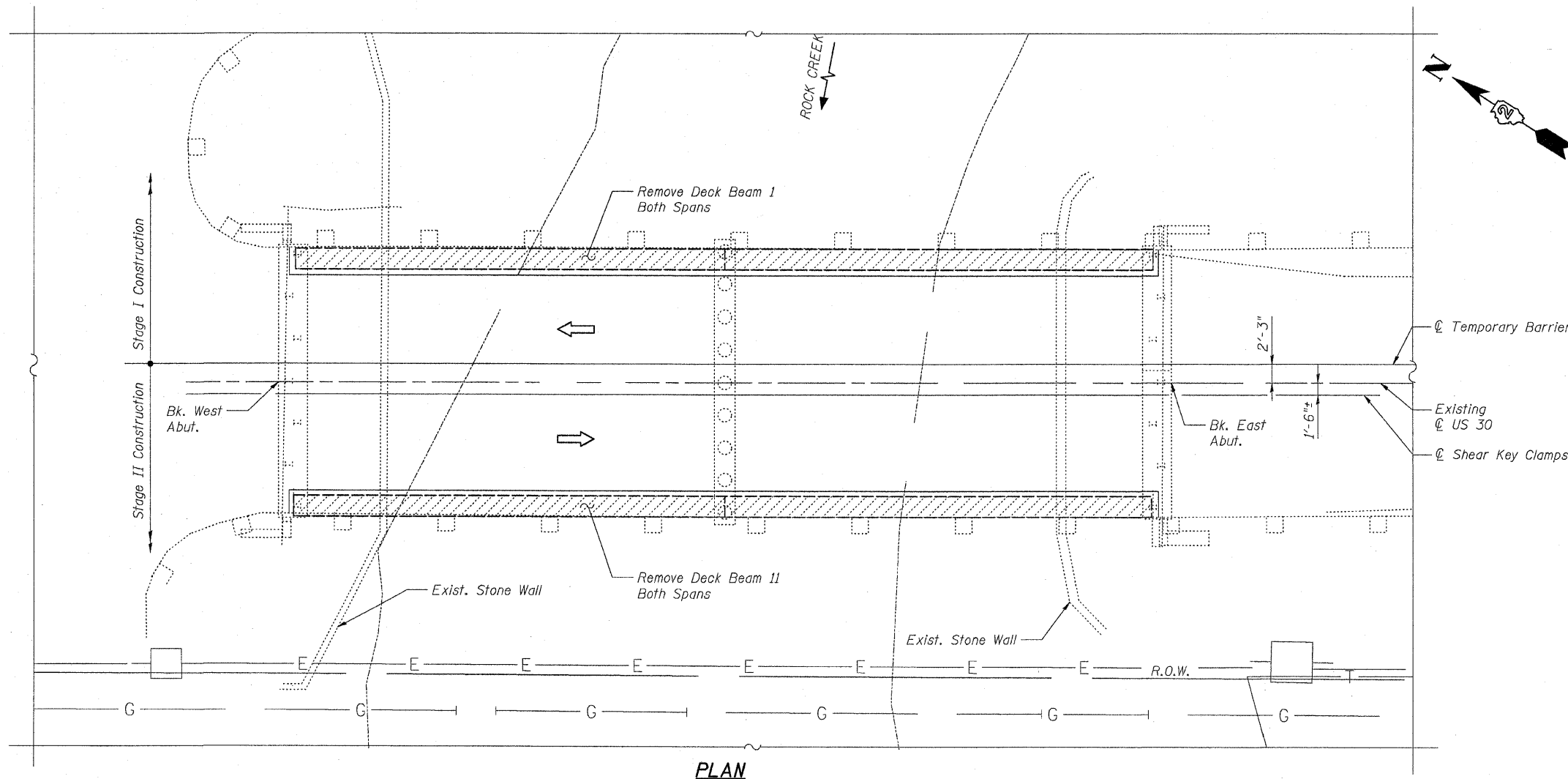


APPROVED
FOR STRUCTURAL ADEQUACY ONLY
Robert E. Anderson
ENGINEER OF BRIDGES AND STRUCTURES

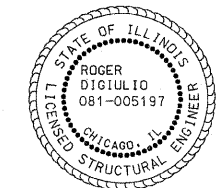
DESIGN SPECIFICATIONS
2002 AASHTO Standard Specifications
for Highway Bridges

LOADING HS20-44
Allowance for Future Wearing
Surface = 25 #/sq. ft.

DESIGN STRESSES
PRECAST PRESTRESSED UNITS
 $f'_c = 6000$ psi
 $f'_{ci} = 5000$ psi
 $f'_s = 270,000$ psi (1/2" ϕ low lax. strands)
 $f_{sl} = 202,000$ psi (1/2" ϕ low lax. strands)



PATRICK ENGINEERING, INC.



Roger Digulio
ROGER DIGULIO, S.E.
081-005197

EXP 11/30/09

DATE 3/10/09

LEGEND

- E — Exist. Overhead Electrical Line
- G — Exist. Gas Line
- T — Exist. Telephone Line

GENERAL PLAN

U.S. RTE. 30/IL RTE. 78 OVER ROCK CREEK
F.A.P. ROUTE 309, SECTION 17B-1
WHITESIDE COUNTY
STATION 1037+69.16
STRUCTURE NO. 098-0053

DATE: March 10, 2009 DRAWN BY: D. Schettler
CHECKED BY: A. Yargloolu

g:\p09\098-0053\work_order_10_us_30_repair_plans\drawings\struct\GeneralPlan.Rcgm
 3/10/2009 3:54:05 PM

