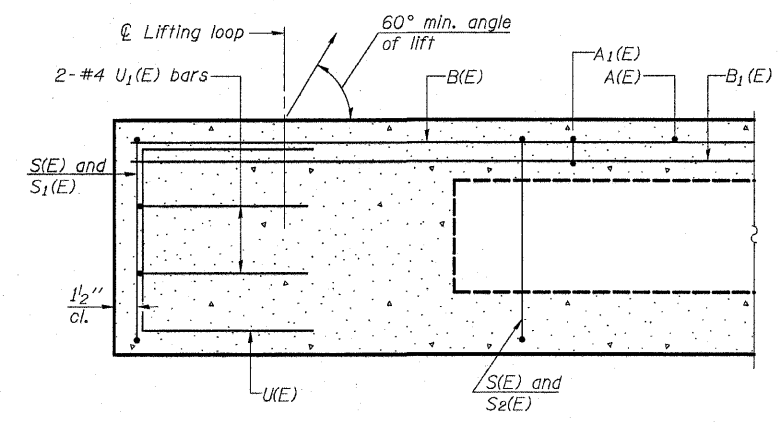
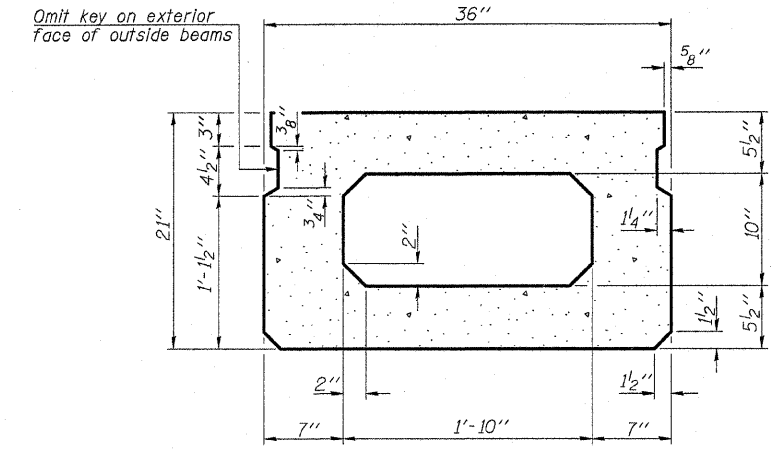


STATE OF ILLINOIS
DEPARTMENT OF TRANSPORTATION

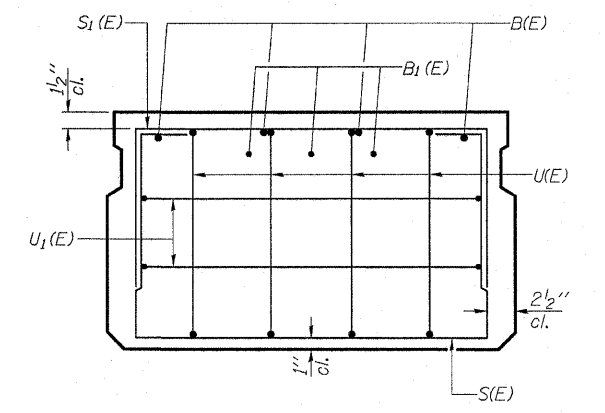
Sheet R6 of R9	F.A.P. RTE. 309	SECTION 17B-1	COUNTY WHITESIDE	TOTAL SHEETS 376	SHEET NO. 47
			ILLINOIS FED. AID PROJECT		
Contract #64B74					



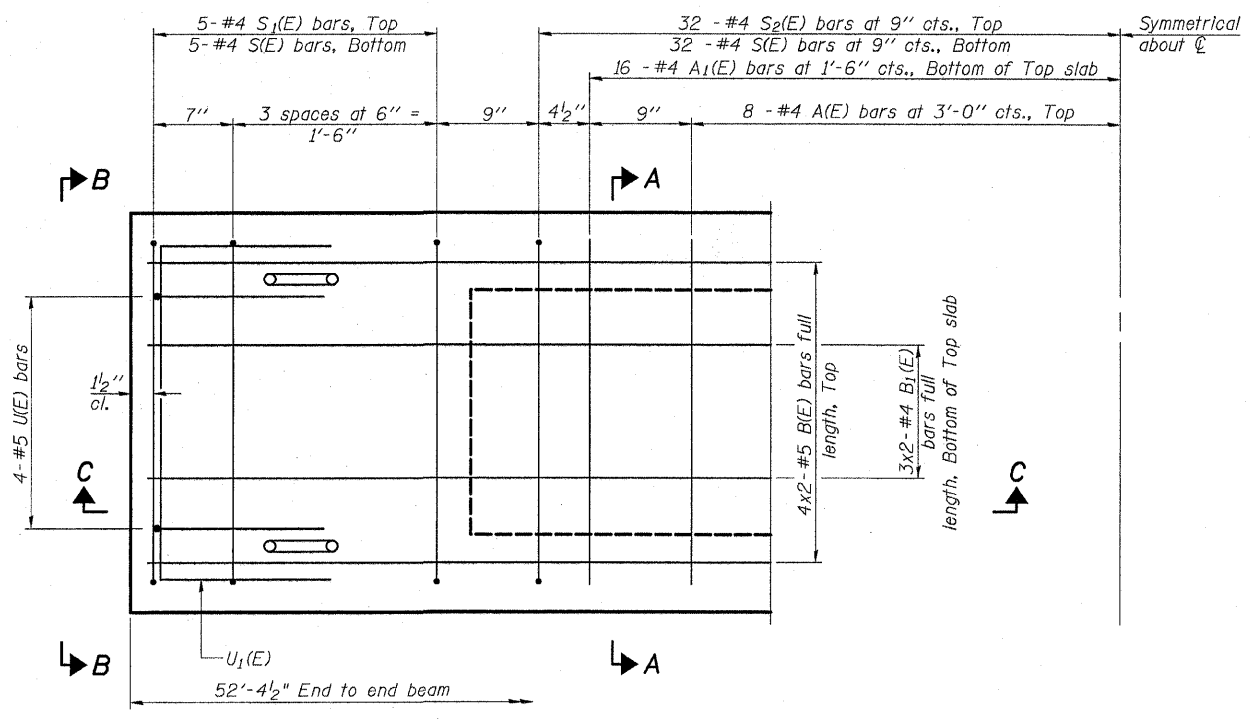
SECTION C-C



SECTION A-A
(Showing dimensions)

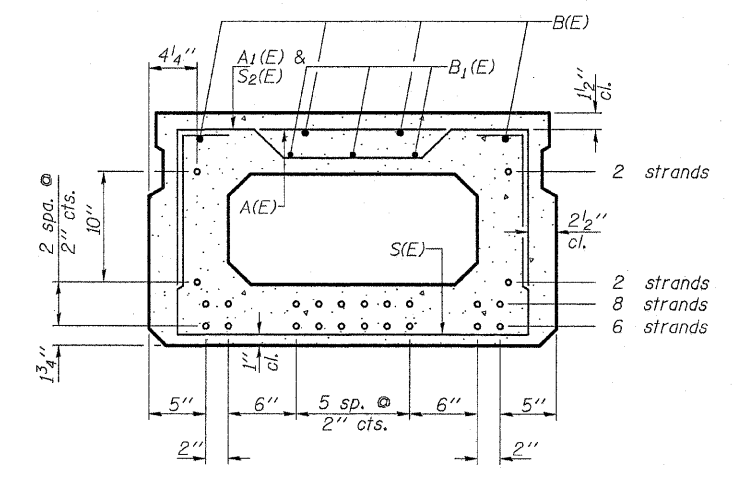


VIEW B-B



PLAN VIEW

Note: Spacing of S(E) and S2(E) bars may be adjusted up to 4" in the immediate area of the transverse tie diaphragms to miss the block outs for the transverse ties.



SECTION A-A
(Showing reinforcement and permissible strand locations)

Note: Place the number of strands specified in each row symmetrically about the centerline of beam in the permissible strand locations shown.

BAR LIST
ONE BEAM ONLY
(For Information Only)

Bar	Nc.	Size	Length	Shape
A(E)	16	#4	2'-7"	—
A1(E)	32	#4	2'-11"	—
B(E)	8	#5	27'-7"	—
B1(E)	6	#4	27'-4"	—
S(E)	74	#4	6'-5"	□
S1(E)	10	#4	4'-11"	□
S2(E)	64	#4	5'-2"	□
U(E)	8	#5	4'-0"	□
U1(E)	4	#4	5'-0"	□

Note: See sheet R7 of R9 for additional details and Bill of Material.

Bars indicated thus 4x2-#5 etc. indicates 4 lines of bars with 2 lengths per line.

Min. Bar Lap
#4 = 1'-8"
#5 = 2'-2"

DECK BEAM DETAILS I

U.S. RTE. 30/IL RTE. 78 OVER ROCK CREEK
F.A.P. ROUTE 309, SECTION 17B-1
WHITESIDE COUNTY
STATION 1037+69.16
STRUCTURE NO. 098-0053

DATE: March 10, 2009
DRAWN BY: D. Schettler
CHECKED BY: A. Yargicoglu

9/10/2009 10:51:45 AM
 c:\p01\2008\05\work order #10 (us 30 repair plans)\drawings\struct\beam\detail.dgn
 2/10/2009 3:54:45 PM

