

STATE OF ILLINOIS
DEPARTMENT OF TRANSPORTATION

Sheet R9 of R9

F.A.P. RTE.	SECTION	COUNTY	TOTAL SHEETS	SHEET NO.
309	17B-1	WHITESIDE	376	50
FED. ROAD DIST. NO. 2		ILLINOIS FED. AID PROJECT		

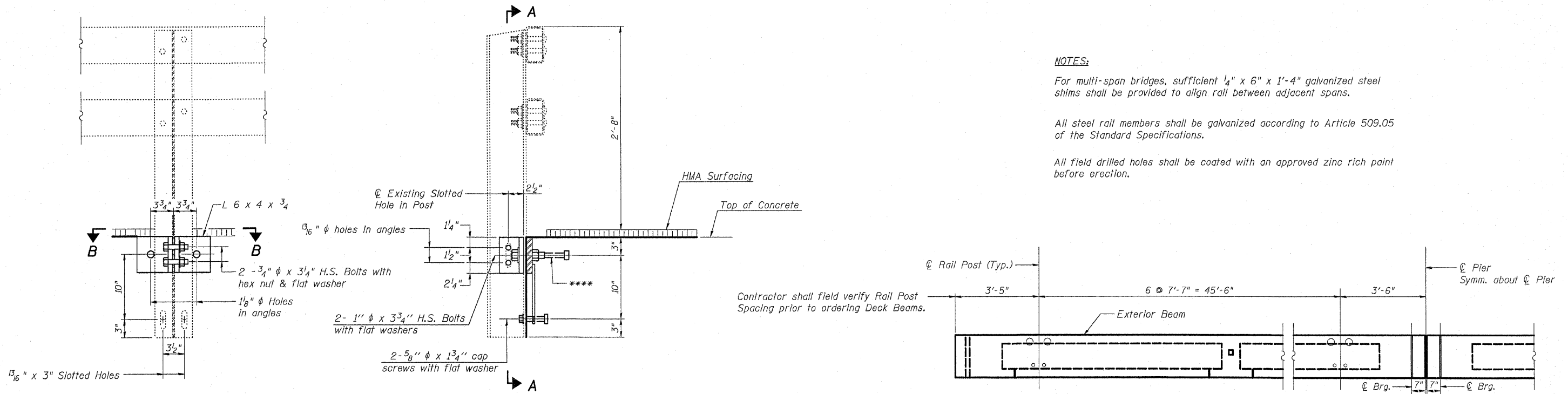
Contract #64B74

NOTES:

For multi-span bridges, sufficient 1/4" x 6" x 1'-4" galvanized steel shims shall be provided to align rail between adjacent spans.

All steel rail members shall be galvanized according to Article 509.05 of the Standard Specifications.

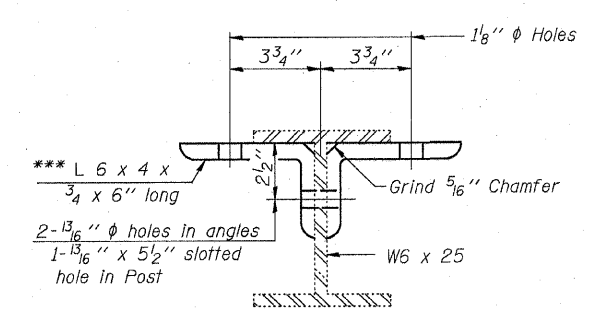
All field drilled holes shall be coated with an approved zinc rich paint before erection.



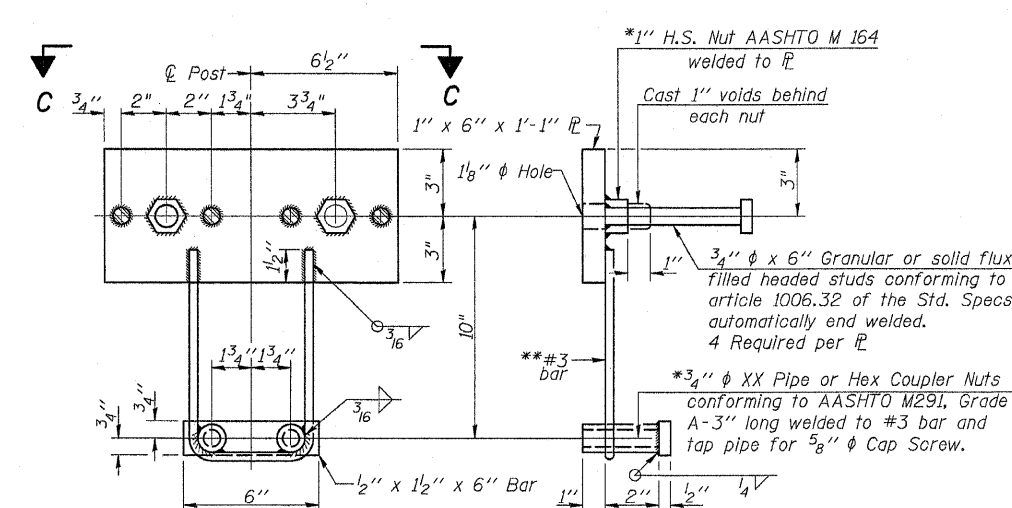
SECTION A-A

SECTION AT RAILING POST

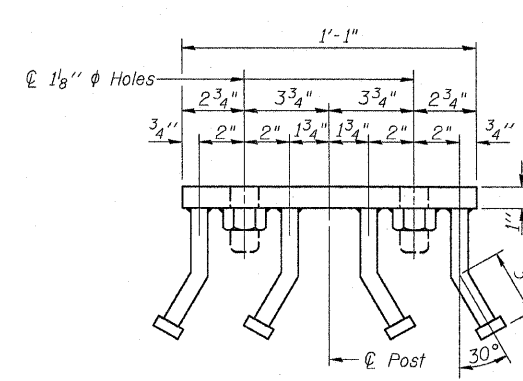
ELEVATION



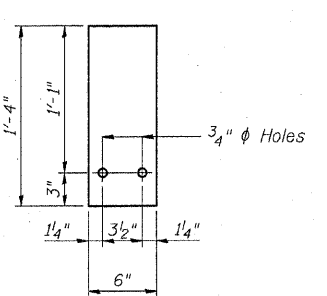
SECTION B-B



ANCHOR DEVICE



VIEW C-C



SHIM DETAIL

- *Threaded areas shall be plugged or blocked off during casting of beam.
- **Whenever the lower insert assemblies interfere with strand locations, the #3 bars shall be cut and adjusted in order to allow raising or lowering of the lower inserts. Maximum adjustment not to exceed 1/2".
- ***Angles shall conform to AASHTO M270, Grade 50. Included in the cost of "Remove and Re-erect Existing Bridge Rail".
- ****The studs of the anchor devices shall be placed below the top reinforcement bars and the outermost longitudinal reinforcement bar shall be placed directly above the studs of the rail post anchor device.

BILL OF MATERIAL

Item	Unit	Quantity
Removing and Re-erecting Existing Railing	Lin. Ft.	216

RAILING DETAILS

U.S. RTE. 30/IL RTE. 78 OVER ROCK CREEK
F.A.P. ROUTE 309, SECTION 17B-1
WHITESIDE COUNTY
STATION 1037+69.16
STRUCTURE NO. 098-0053

DATE: March 10, 2009
DRAWN BY: D. Schettler
CHECKED BY: A. Yargalloglu

g:\p\gloog\struct\3/10/2009 3:54:22 PM g:\1dot\20608_015\work_order_110 (us 30 repair plan)\drawings\struct\Rail\ing\rails.dgn

