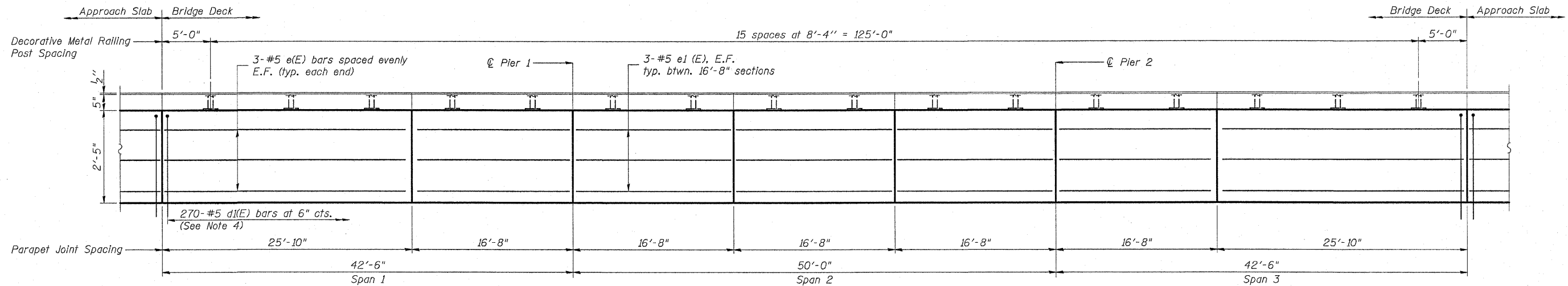


STATE OF ILLINOIS
DEPARTMENT OF TRANSPORTATION

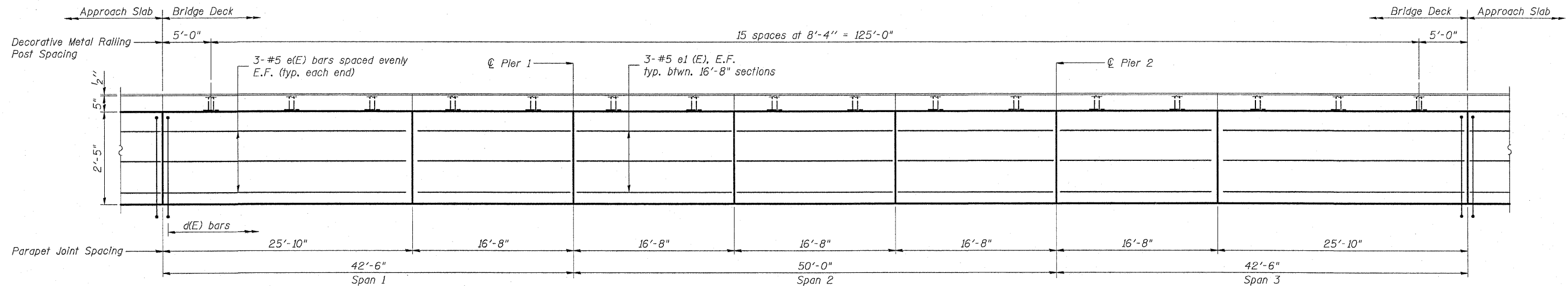
Sheet S10 of S25

F.A.P. RTE.	SECTION	COUNTY	TOTAL SHEETS	SHEET NO.
309	(17R)B	WHITESIDE	376	60
FED. ROAD DIST. NO. 2			ILLINOIS FED. AID PROJECT	

Contract #64B74



AT BIKE LANE PARAPET



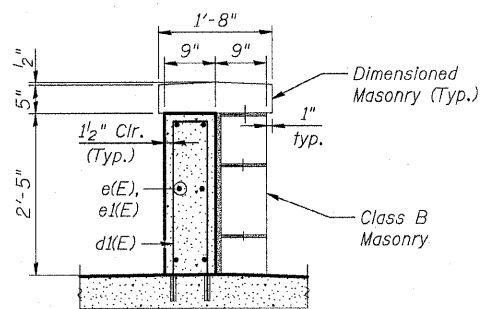
AT SIDEWALK PARAPET

BALTIMORE WASHINGTON PARKWAY PARAPET DETAIL

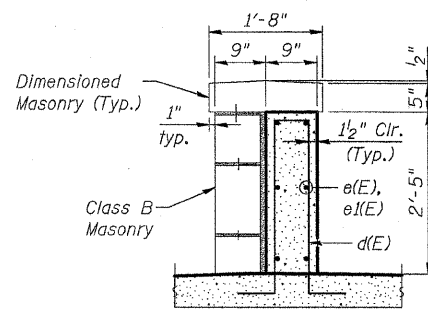
Looking North
(E.F. = Each Face)

MINIMUM BAR LAP

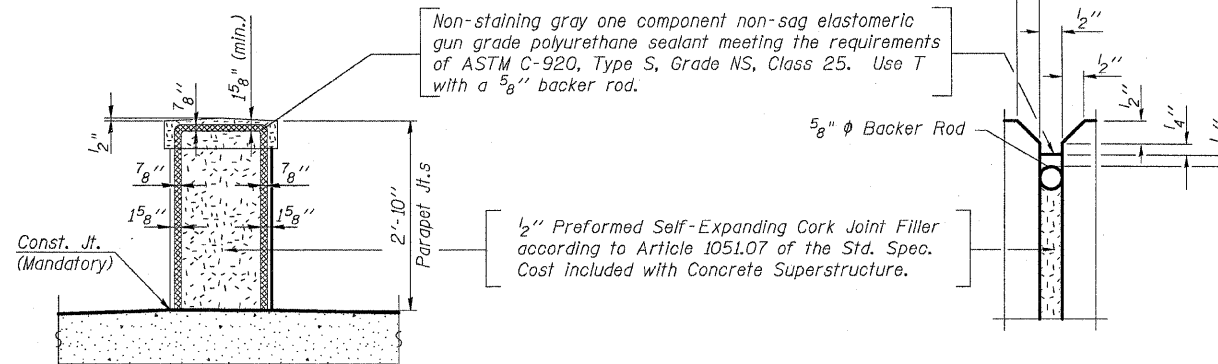
(Parapet)
#5 Bar = 2'-2"



PARAPET SECTION
At Bike Lane Parapet



PARAPET SECTION
At Sidewalk Parapet



PARAPET JOINT DETAIL

Note:

- Stone Masonry details not shown for clarity. See Sheet S12 of S25 for Stone Masonry Details.
- Work this Sheet with Sheet S12 of S25 for Dovetail Anchor Slot Locations.
- The Contractor shall coordinate the post locations for Decorative Railing with the railing installation to assure proper fit.
- Core and set #5 d(E) bar according to Article 509.06 of the Standard Specifications. Cored holes shall be roughened or scored per manufacturer's recommendations. Maximum depth of hole shall not exceed 6".

SUPERSTRUCTURE DETAILS I - PARAPET ELEVATION AND DETAILS
U.S. RTE. 30/IL RTE. 78 OVER ROCK CREEK
F.A.P. ROUTE 309, SECTION (17R)B
WHITESIDE COUNTY
STATION 1037+84.35
STRUCTURE NO. 098-0113

DATE: December 18, 2008
DRAWN BY: D. Schettler
CHECKED BY: A. Durbak