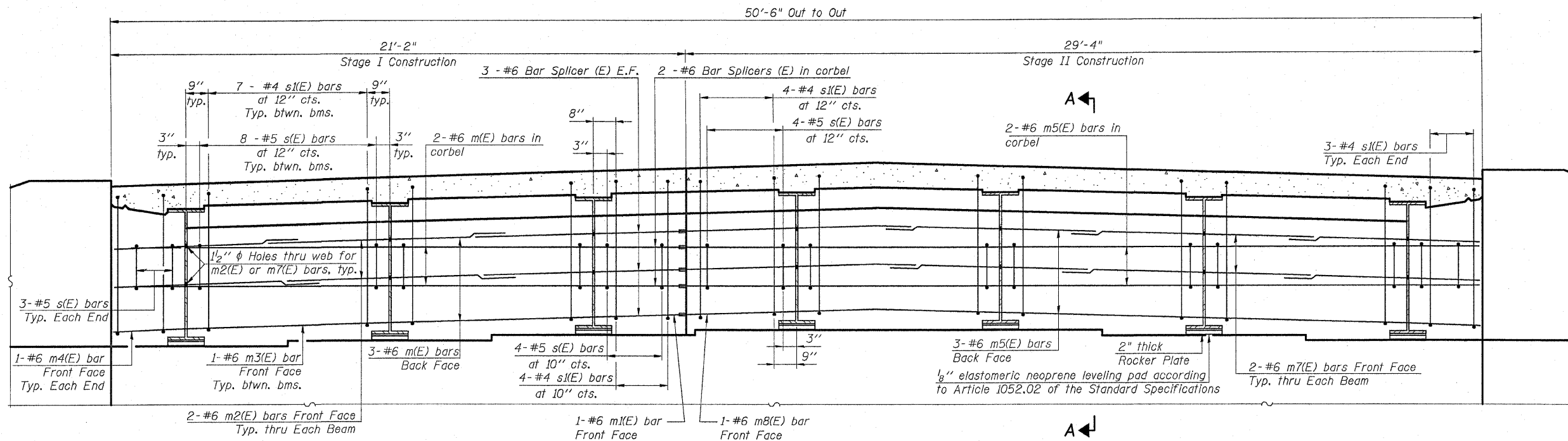
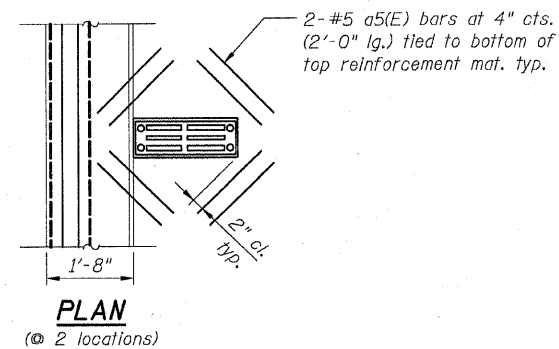


STATE OF ILLINOIS
DEPARTMENT OF TRANSPORTATION

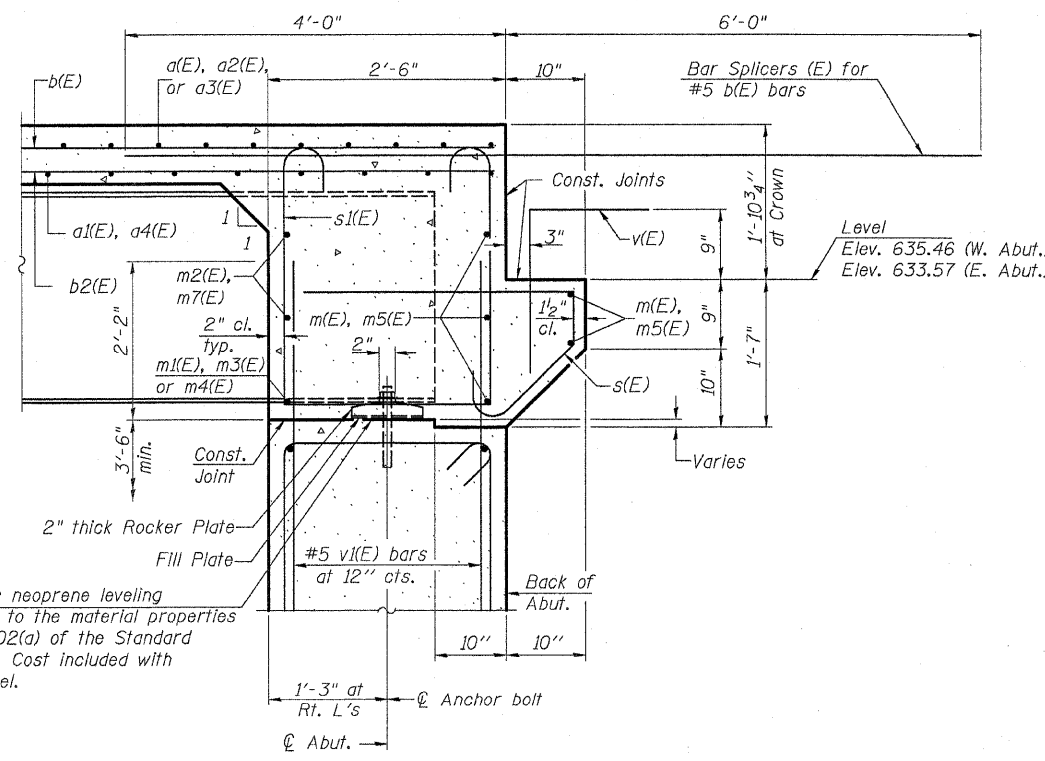
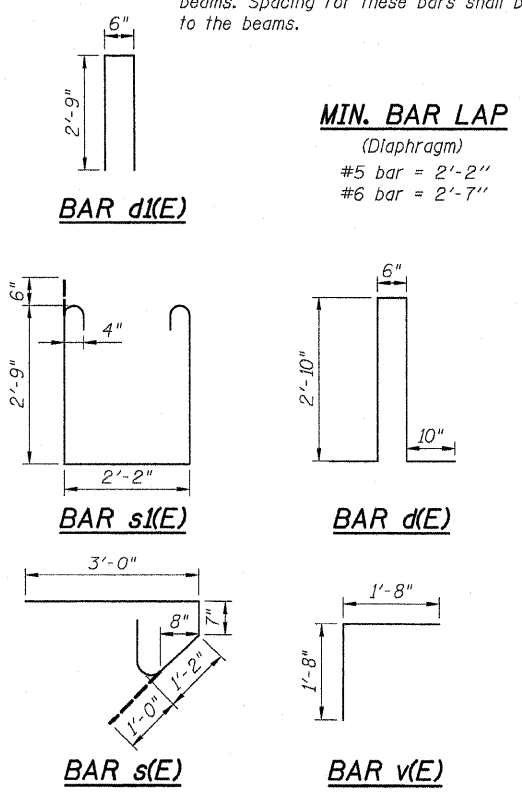


DIAPHRAGM ELEVATION AT ABUTMENT
(E.F. = Each Face)

Notes:
Reinforcement bars in diaphragm are billed with superstructure on Sheet S11 of S25.
Concrete in diaphragm is included with Concrete Superstructure on Sheet S11 of S25.
The s(E) and s(E) bars shall be placed parallel to the beams. Spacing for these bars shall be at right angles to the beams.



DRAINAGE SCUPPER



SECTION A-A

**SUPERSTRUCTURE
BILL OF MATERIAL**

Bar	No.	Size	Length	Shape
a(E)	270	#5	20'-10"	—
a1(E)	203	#5	20'-10"	—
a2(E)	135	#6	6'-0"	—
a3(E)	270	#5	29'-0"	—
a4(E)	203	#5	29'-0"	—
a5(E)	16	#5	2'-0"	—
b(E)	260	#5	28'-4"	—
b1(E)	100	#6	26'-2"	—
b2(E)	294	#5	23'-10"	—
d(E)	270	#5	7'-10"	JL
d1(E)	270	#5	6'-0"	—
e(E)	24	#5	25'-6"	—
e1(E)	60	#5	16'-4"	—
m(E)	10	#6	20'-10"	—
m1(E)	2	#6	3'-0"	—
m2(E)	12	#6	8'-9"	—
m3(E)	10	#6	7'-1"	—
m4(E)	4	#6	2'-4"	—
m5(E)	10	#6	29'-0"	—
m7(E)	16	#6	9'-4"	—
m8(E)	2	#6	3'-8"	—
s(E)	108	#5	5'-9"	—
s1(E)	98	#4	8'-9"	—
v(E)	104	#5	3'-4"	—
Reinforcement Bars, Epoxy Coated	Pound	53,170		
Concrete Superstructure	Cu. Yds.	218.4		
Bar Splacers	Each	593		
Protective Coat	Sq. Yd.	785		
Bridge Deck Grooving	Sq. Yd.	420		

Bars indicated thus 20 x 3-#5 etc. indicates 20 line of bars with 3 lengths per line.

**SUPERSTRUCTURE DETAILS II -
ABUTMENT DIAPH. AND BILL OF MAT.**
U.S. RTE. 30/IL RTE. 78 OVER ROCK CREEK
F.A.P. ROUTE 309, SECTION (17)RB
WHITESIDE COUNTY
STATION 1037+84.35
STRUCTURE NO. 098-0113
DATE: December 18, 2008
DRAWN BY: D. Schettler
CHECKED BY: A. Durbak

N:\Ilsie\DOT\2060B_05\Work Order #105 30 over Rock Creek\Drawings\STRUCTURE\DeckDetailS2.dgn
 1/26/2009 2:42:03 PM
 c:\pcc\plg\struct\

