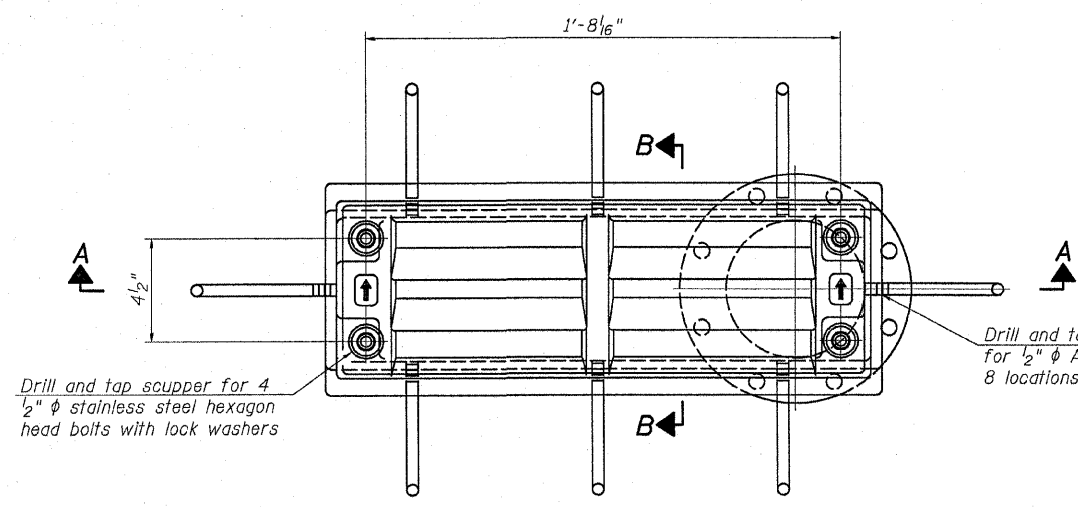


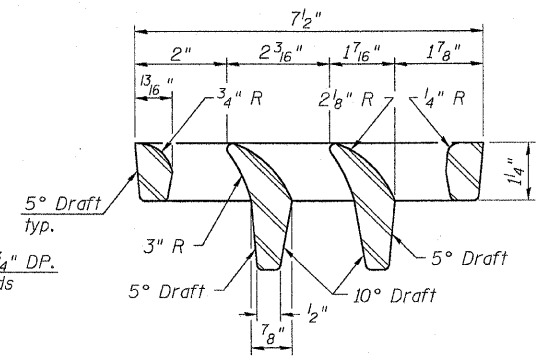
STATE OF ILLINOIS
DEPARTMENT OF TRANSPORTATION

Sheet S13 of S25	F.A.P. RTE. 309	SECTION 17R/B	COUNTY WHITESIDE	TOTAL SHEETS 376	SHEET NO. 53
FED. ROAD DIST. NO. 2			ILLINOIS FED. AID PROJECT		

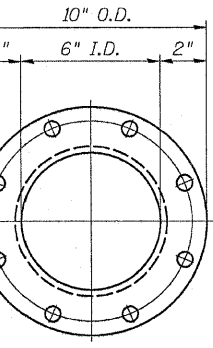
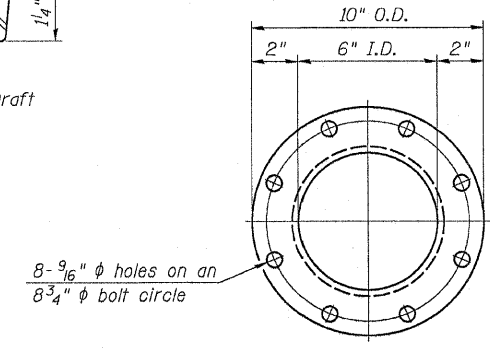
Contract #64B74



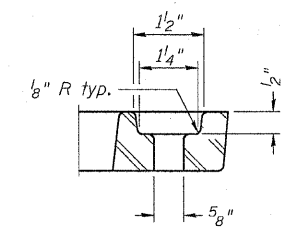
PLAN



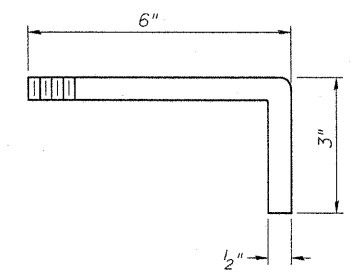
VANE GRATE DETAIL



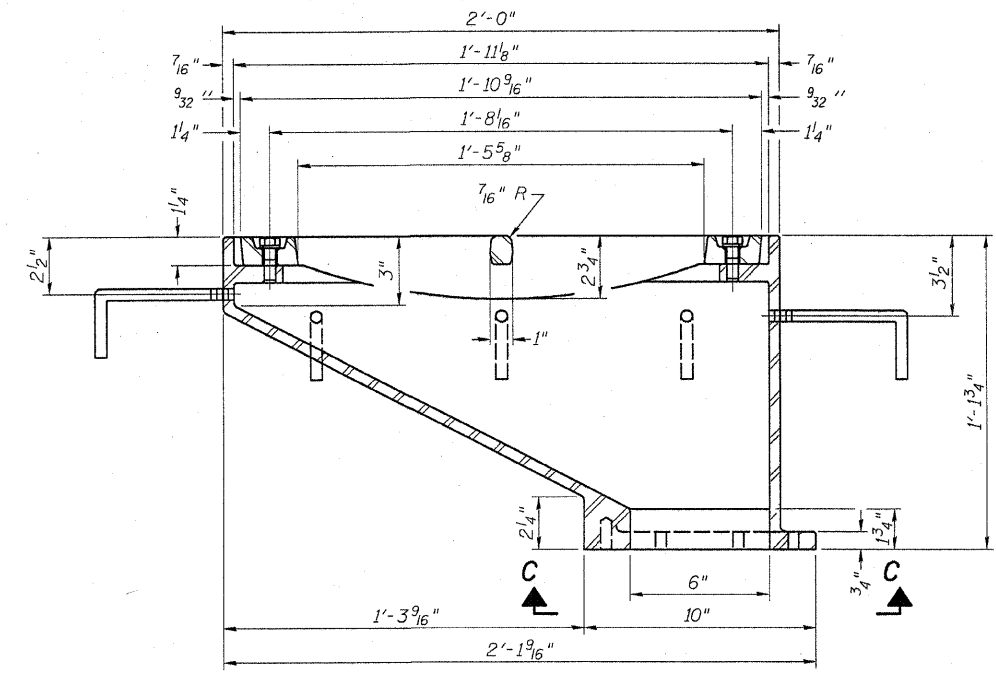
DOWNSPOUT



BOLT HOLE DETAIL

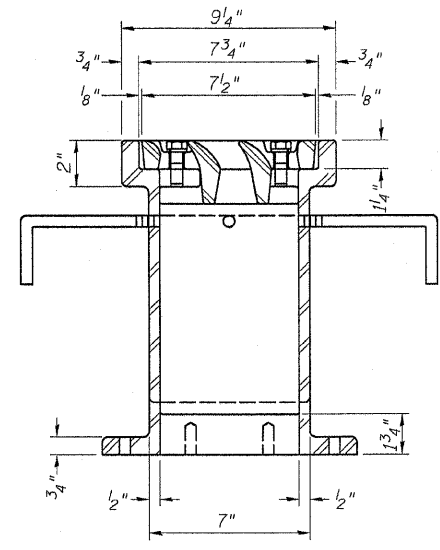


ANCHOR STUD DETAIL



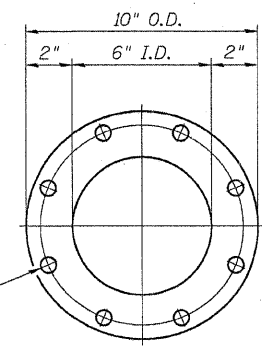
SECTION A-A

See sheet of for scupper location relative to parapet.



SECTION B-B

Drill and tap 8 holes for 1/2"-13 bolts on an 8 3/4" φ bolt circle. (2 blind holes are 1/4" deep, 6 thru holes)



VIEW C-C

BILL OF MATERIAL

ITEM	UNIT	QUANTITY
Drainage Scupper, DS-12	Each	2

DRAINAGE SCUPPER, DS-12
U.S. RTE. 30/IL RTE. 78 OVER ROCK CREEK
F.A.P. ROUTE 309, SECTION (17R/B)
WHITESIDE COUNTY
STATION 1037+84.35
STRUCTURE NO. 098-0113
DATE: December 18, 2008
DRAWN BY: D. Schettler
CHECKED BY: A. Yargiooglu

C:\p\g\cgl\STRUCT\122805\work order #11us 30 over rock creek\drainage\scupper\13-drainagescupper.dgn
 12/17/2008 12:28:05 PM

