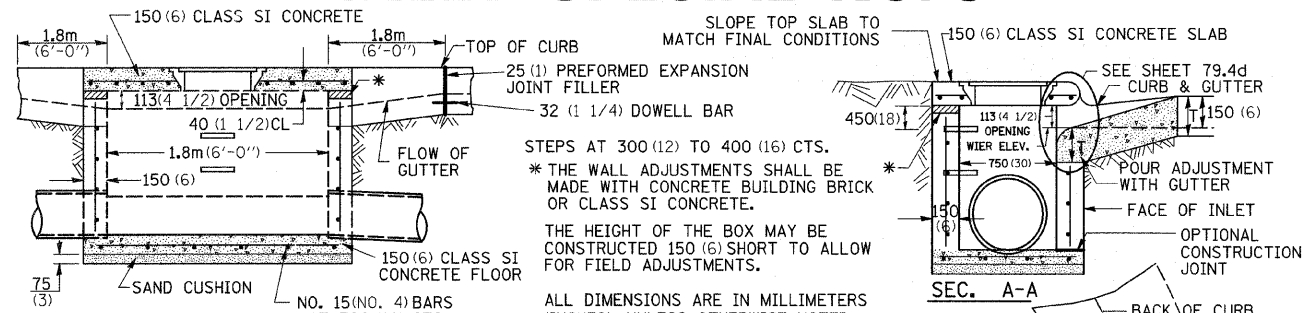


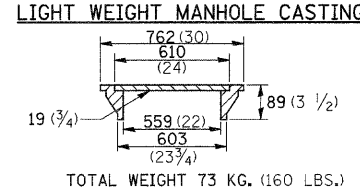
# INLET SPECIAL NO. 5



STEPS AT 300(12) TO 400(16) CTS.  
 \* THE WALL ADJUSTMENTS SHALL BE MADE WITH CONCRETE BUILDING BRICK OR CLASS SI CONCRETE.  
 THE HEIGHT OF THE BOX MAY BE CONSTRUCTED 150(6) SHORT TO ALLOW FOR FIELD ADJUSTMENTS.  
 ALL DIMENSIONS ARE IN MILLIMETERS (INCHES) UNLESS OTHERWISE NOTED.

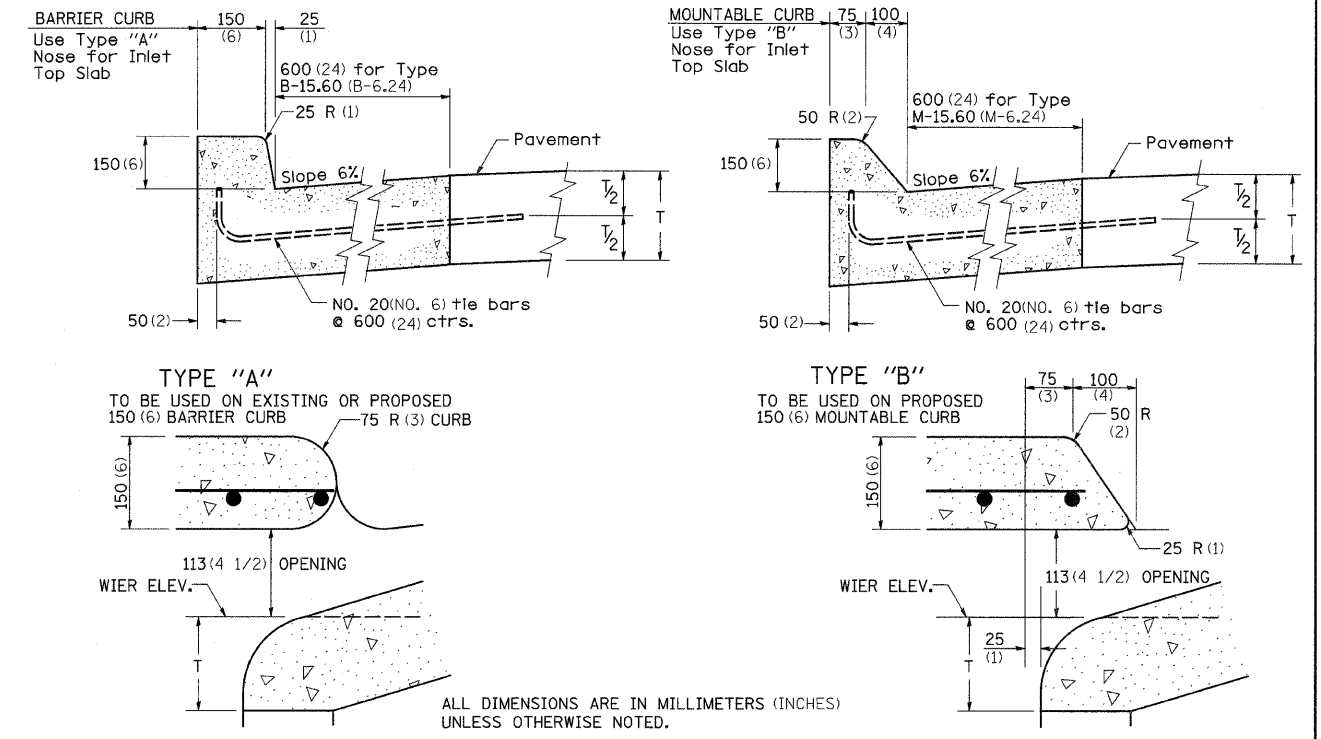
**FRONT VIEW**  
 150(6) CLASS SI CONCRETE  
 1.8m (6'-0")  
 113(4) 1/2 OPENING  
 40 (1 1/2) CL  
 1.8m (6'-0")  
 150 (6)  
 75 (3)  
 SAND CUSHION  
 NO. 15 (NO. 4) BARS AT 300 (12) CTS

**NOTES**  
 SEE STANDARD 602701 FOR DETAILS OF STEPS.  
 25 (1) PREFORMED EXPANSION JOINTS AS SHOWN SHALL BE PROVIDED ON EACH SIDE OF INLET.  
 CLASS SI CONCRETE OR PRECAST CONCRETE SHALL BE USED THROUGHOUT.  
 THE SIDE WALLS MAY BE BUILT AS PRECAST SEGMENTAL SECTIONS.  
 REINFORCEMENT FOR INLET SPECIAL NO. 5 SHALL BE ACCORDING TO DISTRICT STANDARD 79.4e



INLET SPECIAL NO. 5 79.4b

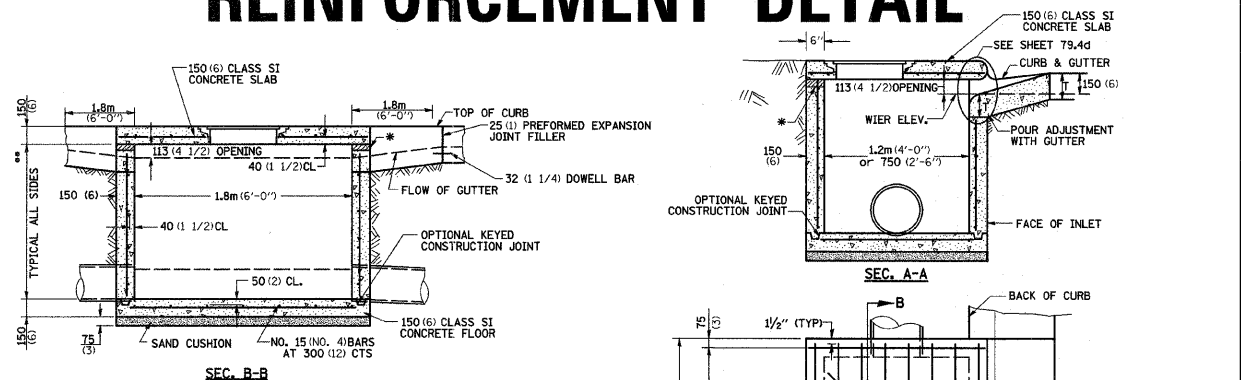
# NOSE TYPE FOR INLET TOP SLAB



ALL DIMENSIONS ARE IN MILLIMETERS (INCHES) UNLESS OTHERWISE NOTED.  
 REVISED - 2-14-95

NOSE TYPE FOR INLET TOP SLAB 79.4d

# INLET SPECIAL NO. 3, 4, 5, 6 REINFORCEMENT DETAIL



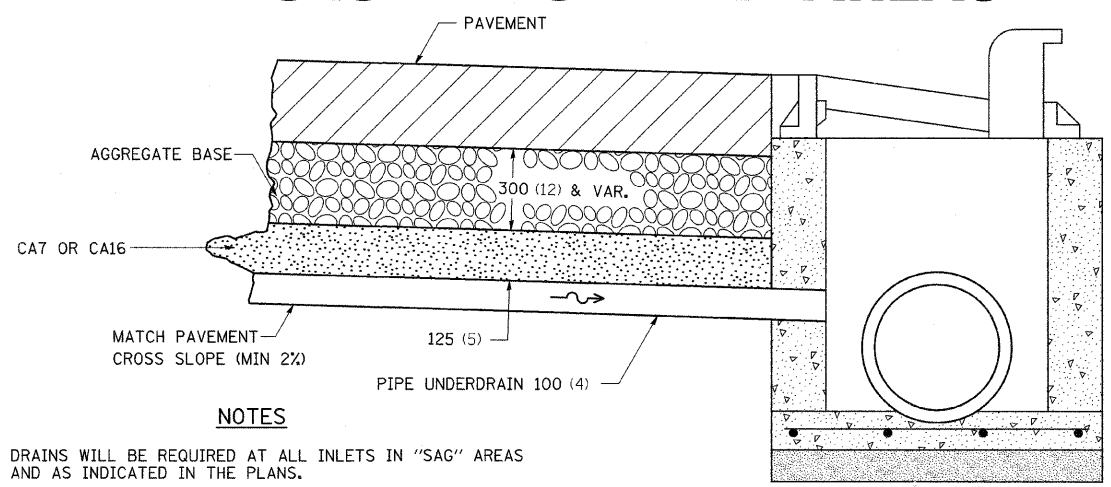
**NOTES**  
 \* THE WALL ADJUSTMENTS SHALL BE MADE WITH CONCRETE BUILDING BRICK OR CLASS SI CONCRETE.  
 THE HEIGHT OF THE BOX MAY BE CONSTRUCTED 150(6) SHORT TO ALLOW FOR FIELD ADJUSTMENTS.  
 \*\* 1.2m (4'-0") TO 2.4m (8'-0") - NO. 15 (NO. 5) REINF. BARS AT 300 (12) CTS. E.W.  
 2.4m (8'-0") TO 4.0m (13'-0") - NO. 15 (NO. 5) REINF. BARS AT 250 (10) CTS. E.W.  
 4.0m (13'-0") TO 4.6m (15'-0") - NO. 15 (NO. 5) REINF. BARS AT 200 (8) CTS. E.W.  
 \*\*\* 7 SPA. AT 200 mm (8") INLET SPECIAL \* 3, 4  
 5 SPA AT 208 mm (7 5/8") INLET SPECIAL \* 5, 6  
 \*\*\*\* 2 REBARS FOR INLET SPECIAL 3 & 4  
 4 REBARS FOR INLET SPECIAL 5 & 6

**NOTES**  
 ALL DIMENSIONS ARE IN MILLIMETERS (INCHES) UNLESS OTHERWISE NOTED.  
 TOP SLAB REINFORCEMENT TO BE EPOXY COATED BARS.

REVISED - 11-01-07

INLET SPECIAL NO. 3, 4, 5, 6 REINFORCEMENT DETAIL 79.4e

# DRAIN FOR AGGREGATE BASES IN URBAN AREAS



**NOTES**  
 DRAINS WILL BE REQUIRED AT ALL INLETS IN "SAG" AREAS AND AS INDICATED IN THE PLANS.  
 THIS WORK SHALL BE COMPLETED ACCORDING TO SECTION 601 OF THE STANDARD SPECIFICATIONS.  
 THIS WORK WILL BE PAID FOR AT THE CONTRACT UNIT PRICE PER METER (FOOT) FOR PIPE UNDERDRAINS OF THE DIAMETER SPECIFIED WHICH PRICE SHALL INCLUDE THE CA7 OR CA16 AND THE CONNECTION TO THE INLET.  
 ALL DIMENSIONS ARE IN MILLIMETERS (INCHES) UNLESS OTHERWISE NOTED.

REVISED - 4-7-99	REGION 2 / DISTRICT 2 STANDARD	F.A.P. RTE.	SECTION	COUNTY	TOTAL SHEETS	SHEET NO.
REVISED -		309	(17R)B	WHITESIDE	376	121
REVISED -		CONTRACT NO. 64B74				
REVISED -		SCALE: 50.0000' = 1" / IN. SHEET NO. OF SHEETS STA. TO STA.	FED. ROAD DIST. NO.	ILLINOIS FED. AID PROJECT		

DRAIN FOR AGGREGATE BASES IN URBAN AREAS 88.4