

STATE OF ILLINOIS
DEPARTMENT OF TRANSPORTATION
DIVISION OF HIGHWAYS

**PROPOSED
HIGHWAY PLANS**

FAP ROUTE 303 (US BUS 20)
SECTION (1-1)CH
PROJECT HSIP-0303(045)
HSIP INTERSECTION CHANNELIZATION
WINNEBAGO COUNTY

C-92-138-09

F.A.P. RTE.	SECTION	COUNTY	TOTAL SHEETS	SHEET NO.
303	(1-1)CH	WINNEBAGO	58	1
		ILLINOIS	CONTRACT NO. 64E90	

FOR INDEX OF SHEETS, SEE SHEET NO. 2
FOR INDEX OF STATE STANDARDS, SEE SHEET NO. 2

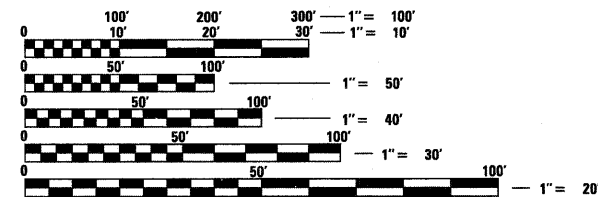


SECTION & IMPROVEMENT ENDS
STA 43+30.00

WINNEBAGO TOWNSHIP SECTION 2

IMPROVEMENT BEGINS
STA 13+21.88

SECTION BEGINS
STA 34+50.00

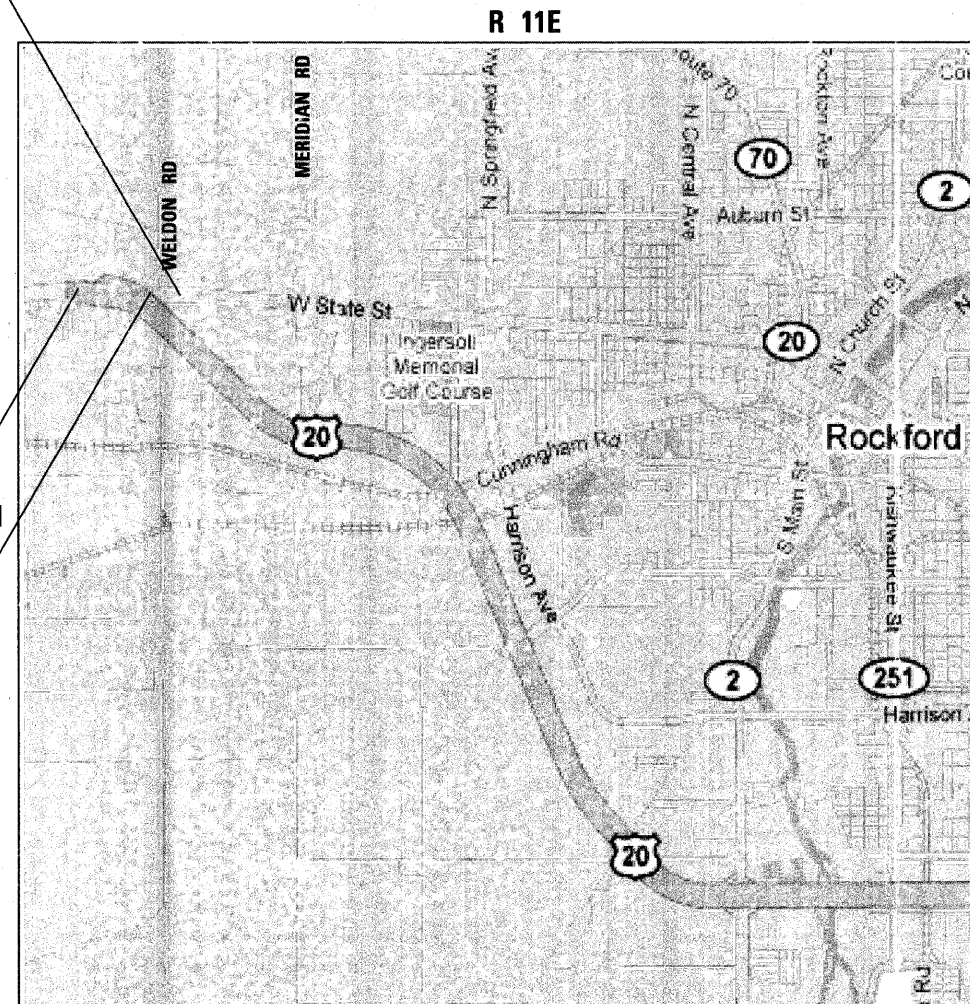


FULL SIZE PLANS HAVE BEEN PREPARED USING STANDARD ENGINEERING SCALES. REDUCED SIZED PLANS WILL NOT CONFORM TO STANDARD SCALES. IN MAKING MEASUREMENTS ON REDUCED PLANS, THE ABOVE SCALES MAY BE USED.

J.U.L.I.E.
JOINT UTILITY LOCATION INFORMATION FOR EXCAVATION
1-800-892-0123
OR 811

PROJECT ENGINEER: MASOOD AHMAD
STUDIES & PLANS SQUAD ENGINEER: TRACI HELFRICH (815) 284-5932

CONTRACT NO. 64E90



GROSS LENGTH = 3008.12 FT. = 0.57 MILE
NET LENGTH = 3008.12 FT. = 0.57 MILE

STATE OF ILLINOIS
DEPARTMENT OF TRANSPORTATION
DIVISION OF HIGHWAYS

SUBMITTED 3/11/09

Thomas F. Ryan
DEPUTY DIRECTOR OF HIGHWAYS, REGION ENGINEER

May 8, 2009
Charles G. Ingersoll
ENGINEER OF DESIGN AND ENVIRONMENT

May 8, 2009
Christine M. Reed
DIRECTOR OF HIGHWAYS, CHIEF ENGINEER

PRINTED BY THE AUTHORITY
OF THE STATE OF ILLINOIS