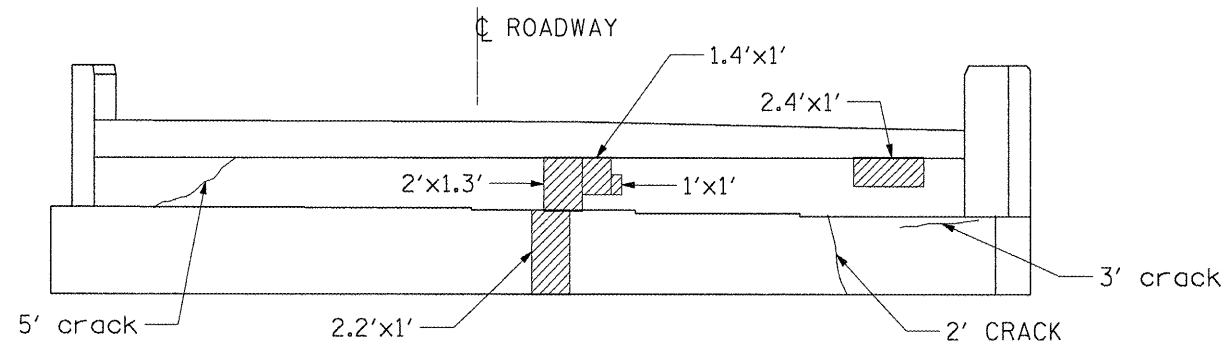
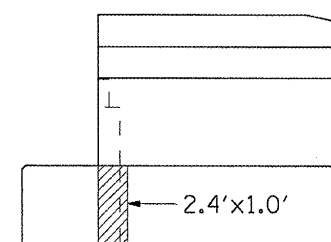


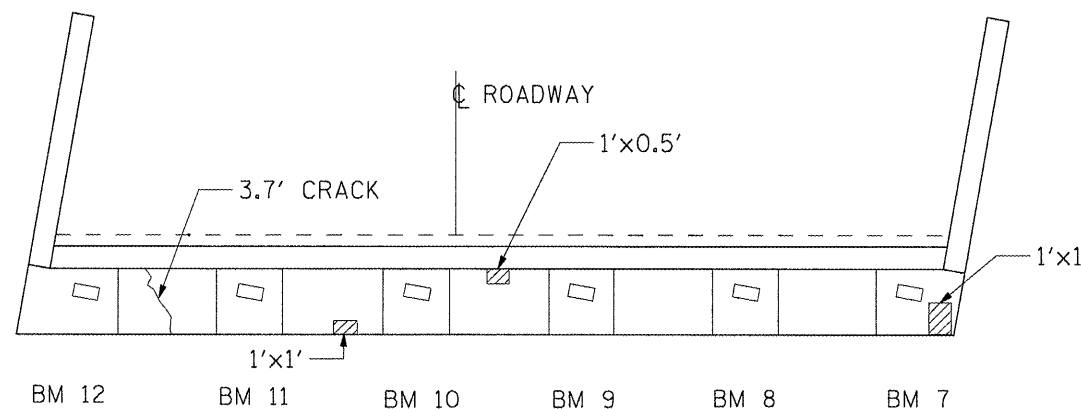
EAST ELEVATION



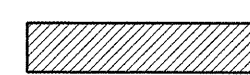
ELEVATION



WEST ELEVATION

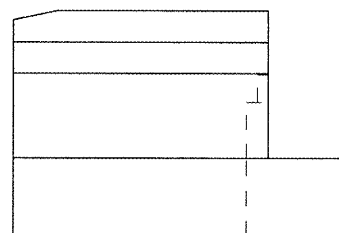


PLAN

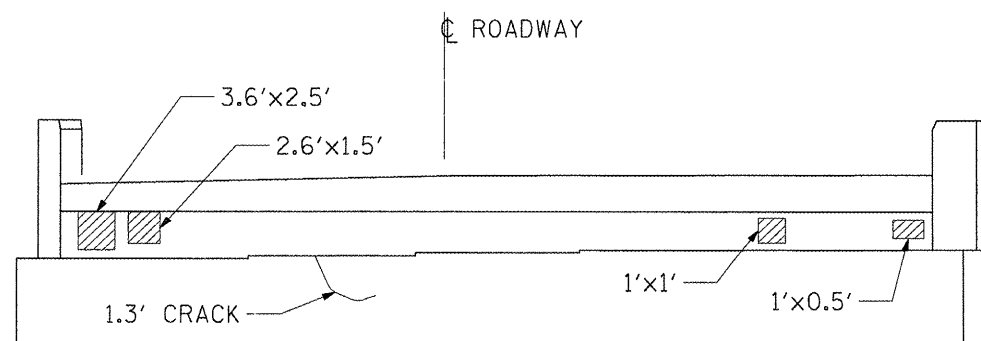


**STRUCTURAL REPAIR OF CONCRETE
(DEPTH EQUAL TO OR LESS THEN 5")**

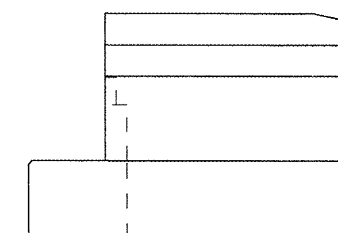
S. ABUTMENT DETAIL - N.B.



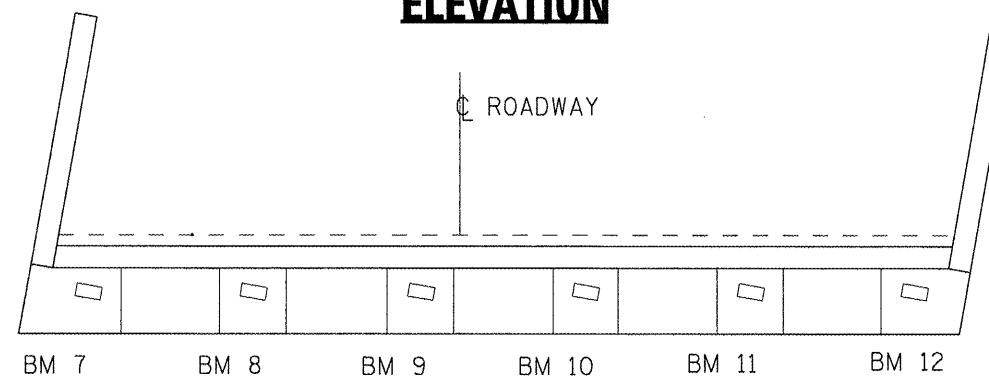
WEST ELEVATION



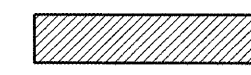
ELEVATION



EAST ELEVATION



PLAN



**STRUCTURAL REPAIR OF CONCRETE
(DEPTH EQUAL TO OR LESS THEN 5")**



EPOXY CRACK INJECTION

N. ABUTMENT DETAILS - N.B.

FILE NAME =
c:\pwork\PIWIDOT\WOODSHANKRL\dms91655

USER NAME = woodshankr1
D3-66898-details.dgn
PLOT SCALE = 100.0000 ' / IN.
PLOT DATE = Mar 25, 2009 - 06:59:12 AM

DESIGNED - RON WOODSHANK
DRAWN - RON WOODSHANK
CHECKED -
DATE -

REVISED -
REVISED -
REVISED -
REVISED -

**STATE OF ILLINOIS
DEPARTMENT OF TRANSPORTATION**

**ABUTMENT DETAILS
SN 050-0170 (NB)**

SCALE: SHEET NO. 4 OF 8 SHEETS STA. TO STA.

| | | | | |
|------------------------------|------------|---------|--------------------|-----------|
| F.A.I. RTE. | SECTION | COUNTY | TOTAL SHEETS | SHEET NO. |
| 39 | (50-7B)1-2 | LASALLE | 29 | 23 |
| FED. ROAD DIST. NO. ILLINOIS | | | CONTRACT NO. 66890 | |