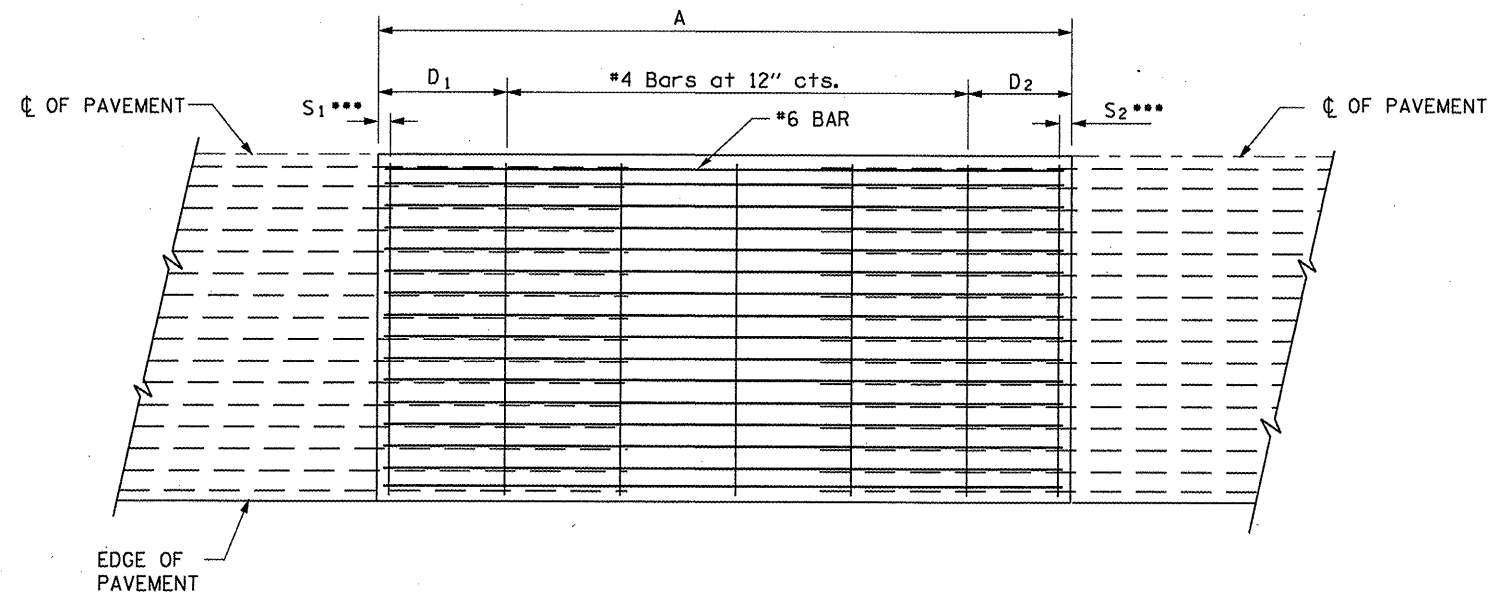
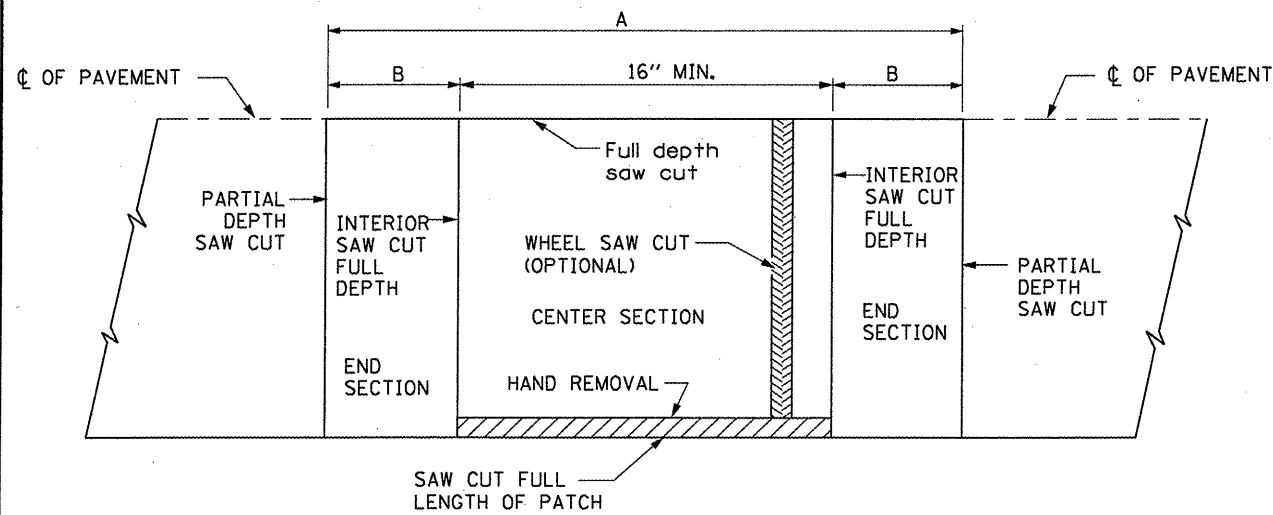


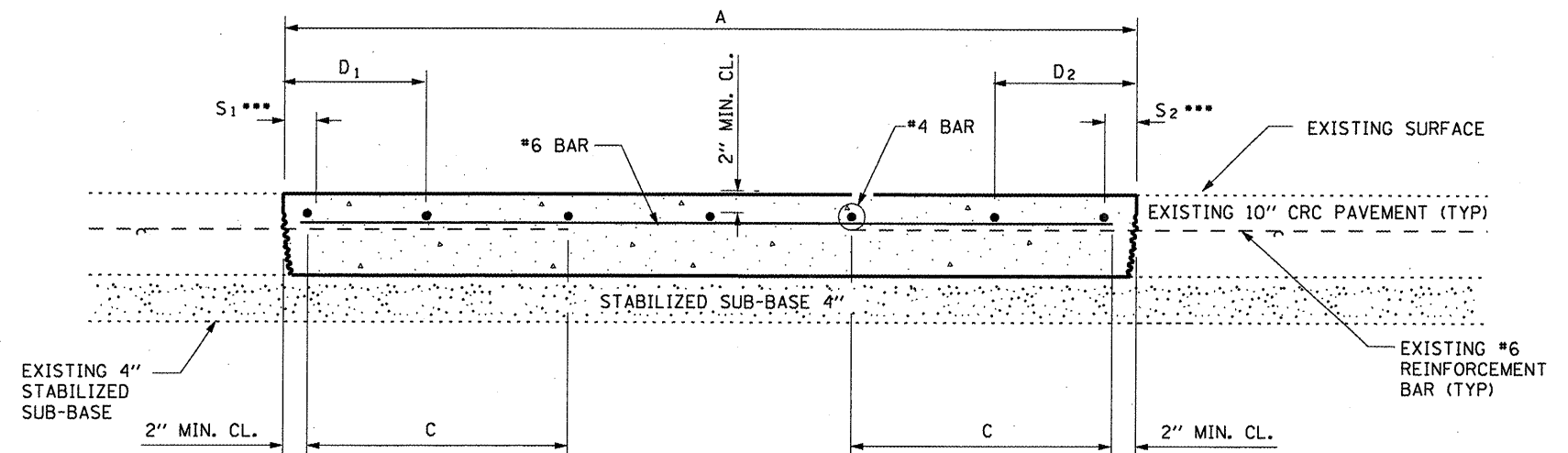
ALTERNATE SAWING DETAIL
(PCC SHOULDER)



PROPOSED PAVEMENT DETAIL
(AGAINST CONCRETE SHOULDER)

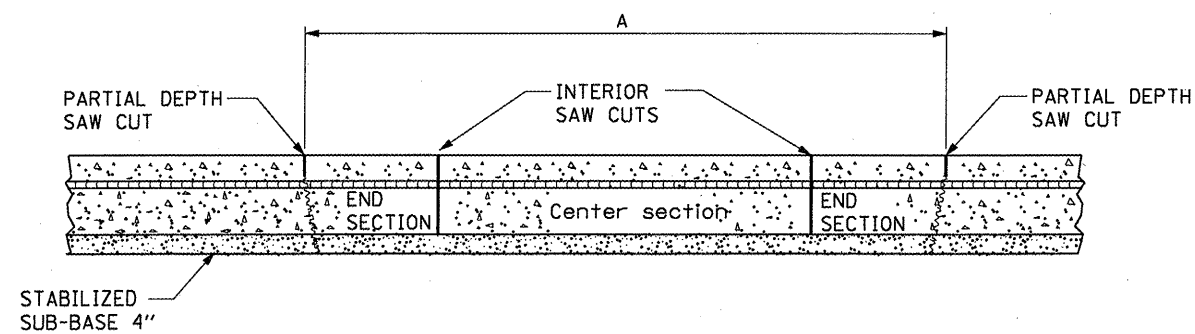


PAVEMENT SAWING DETAIL
(PCC SHOULDER)



PROPOSED CLASS A PATCHING DETAIL

EXISTING LONGITUDINAL REINFORCEMENT BARS	A (min.)	B (min.)	C (min.)
No. 7	6'-0"	24"	22"



REMOVAL DETAIL

NOTES:

- EVERY 3rd INTERSECTION MUST BE TIED
- LAP NEW REINFORCEMENT WITH EXISTING LONGITUDINAL REINFORCEMENT
- VARIABLES: WHERE S_1 AND S_2 ARE $2\frac{1}{2}$ " MIN. AND 12" MAX. $D_1 = 2(S_1)$ AND $D_2 = 2(S_2)$

FILE NAME =	USER NAME = woodshank-r1	DESIGNED - RON WOODSHANK	REVISED -
c:\pw_work\p\WOODSHANKR1\dms91664	D368934-detas1a.dgn	DRAWN - RON WOODSHANK	REVISED -
	PLOT SCALE = 100.0000' / IN.	CHECKED -	REVISED -
	PLOT DATE = Mar 31, 2009 - 01:36:29 PM	DATE -	REVISED -

STATE OF ILLINOIS
DEPARTMENT OF TRANSPORTATION

PATCHING DETAILS

SCALE: _____ SHEET NO. ____ OF ____ SHEETS STA. _____ TO STA. _____

F.A.I. RTE. 39	SECTION VARIOUS	COUNTY LASALLE	TOTAL SHEETS 14	SHEET NO. 8
ILLINOIS			CONTRACT NO. 66934	