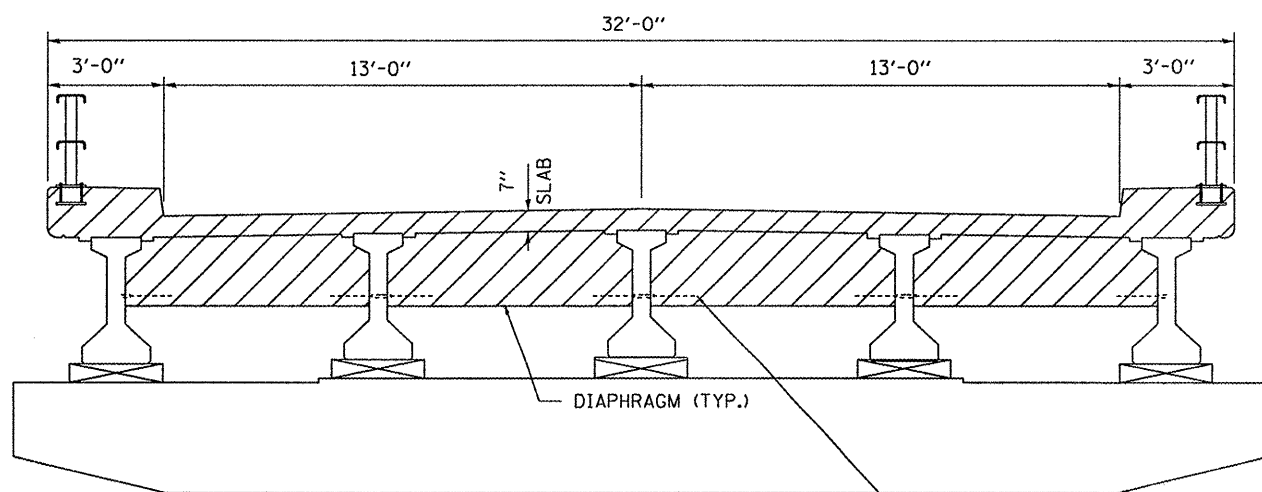
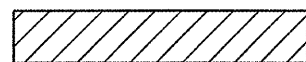


NORTH ELEVATION
PIER 3 - SPAN 3



SOUTH ELEVATION
PIER 3 - SPAN 4

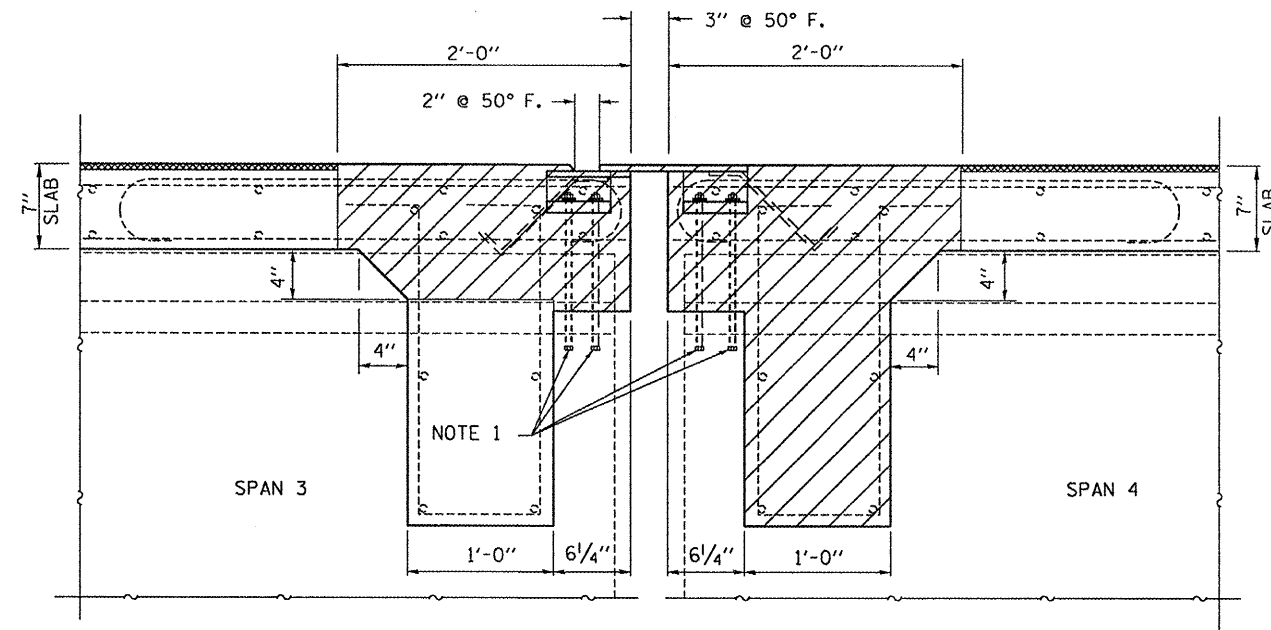
THREADED RODS SHALL BE STRAIGHTENED, CLEANED AND INCORPORATED INTO THE NEW CONCRETE



CONCRETE REMOVAL



BRIDGE DECK HYDRO-SCARIFICATION (1/2")

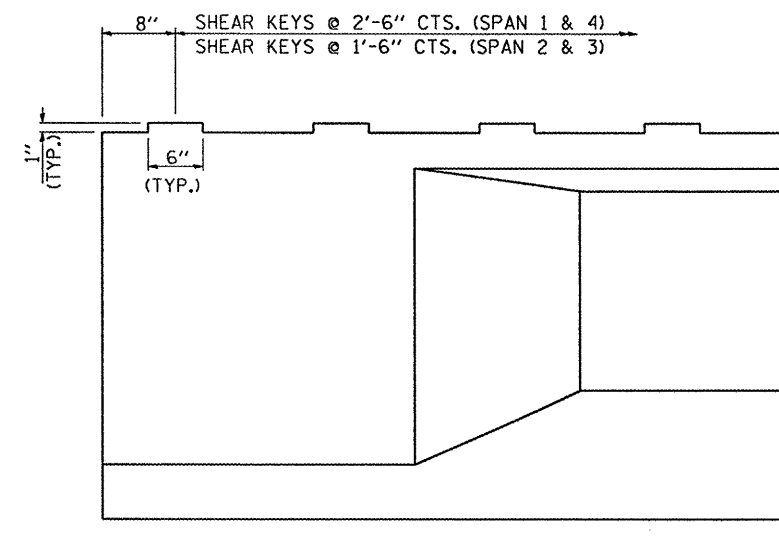


SECTION E-E

SEE SHEET 2 OF 18

NOTE: 1 EXISTING ANCHOR BOLTS EXTENDING FROM PPC BEAMS SHALL BE CUT FLUSH WITH TOP OF BEAM AND GROUND FLAT.

NOTE: 2 6" x 1" SHEAR KEYS ON PPC I-BEAMS ARE TO BE SALVAGED. (TYPICAL AT JOINTS)



ELEVATION AT BEAM END

FILE NAME =	USER NAME = #USER#	DESIGNED - RON WOODSHANK	REVISED -
#FILE#		DRAWN - RON WOODSHANK	REVISED -
	PLOT SCALE = #SCALE#	CHECKED -	REVISED -
	PLOT DATE = #DATE#	DATE -	REVISED -

STATE OF ILLINOIS
DEPARTMENT OF TRANSPORTATION

EXISTING SLAB DETAILS AT PIER 3

SCALE: SHEET NO. 9 OF 18 SHEETS STA. TO STA.

F.A.I. RTE.	SECTION	COUNTY	TOTAL SHEETS	SHEET NO.
80	(50-41)	LASALLE	25	16
ILLINOIS			CONTRACT NO. 66935	