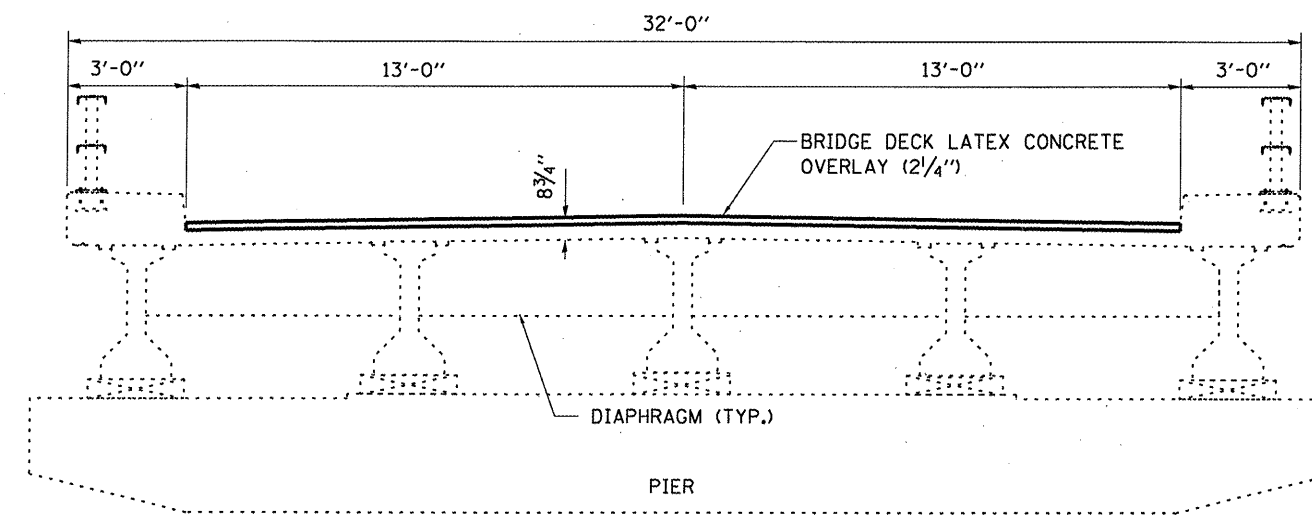
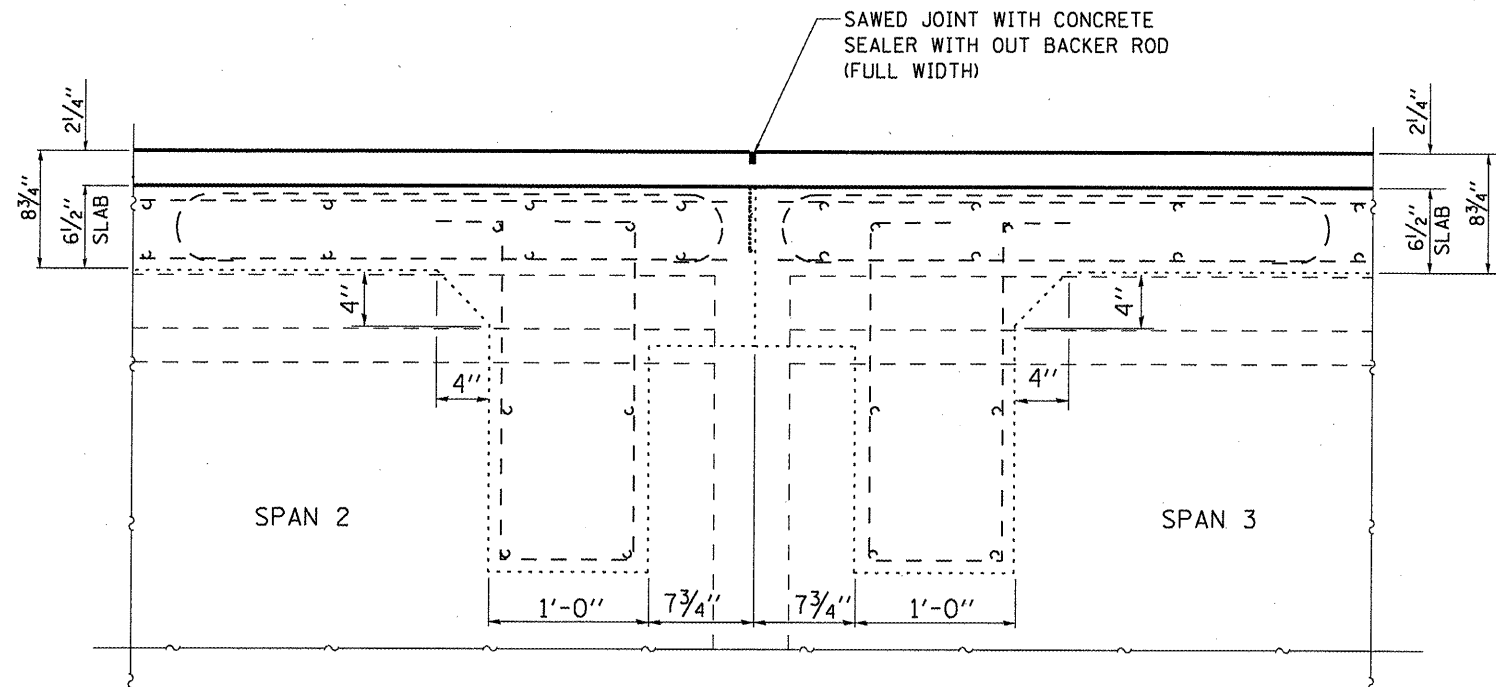


NORTH ELEVATION
PIER 2 - SPAN 2



SOUTH ELEVATION
PIER 2 - SPAN 3



SECTION D'-D'

FILE NAME =	USER NAME = woodshank1	DESIGNED - RON WOODSHANK	REVISED -
ca:\pwwork\WOODSHANK\WOODSHANKR\l\dms91658	D366935-details.dgn	DRAWN - RON WOODSHANK	REVISED -
	PLOT SCALE = 40.0000' / IN.	CHECKED -	REVISED -
	PLOT DATE = Apr 07, 2009 - 07:53:17 AM	DATE -	REVISED -

STATE OF ILLINOIS
DEPARTMENT OF TRANSPORTATION

PROPOSED SLAB DETAILS AT PIER 2

SCALE: SHEET NO. 14 OF 18 SHEETS STA. TO STA.

F.A.I. RTE. 80	SECTION (50-4)I	COUNTY LASALLE	TOTAL SHEETS 25	SHEET NO. 21
CONTRACT NO. 66935				ILLINOIS