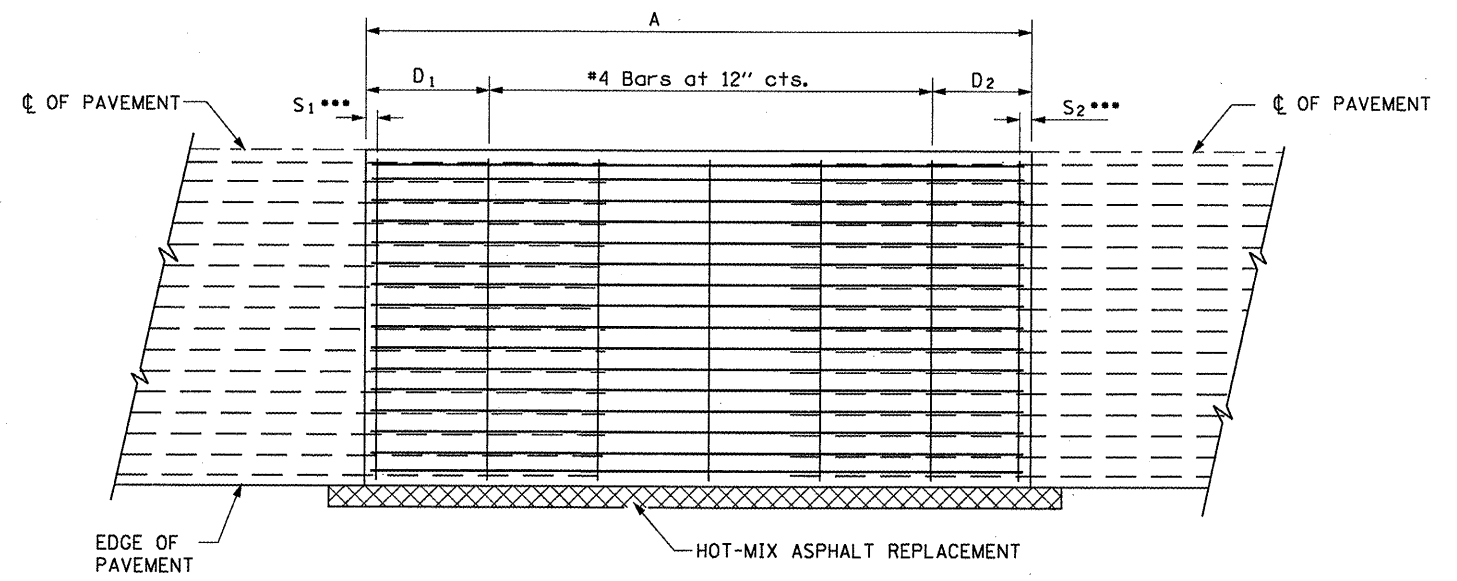
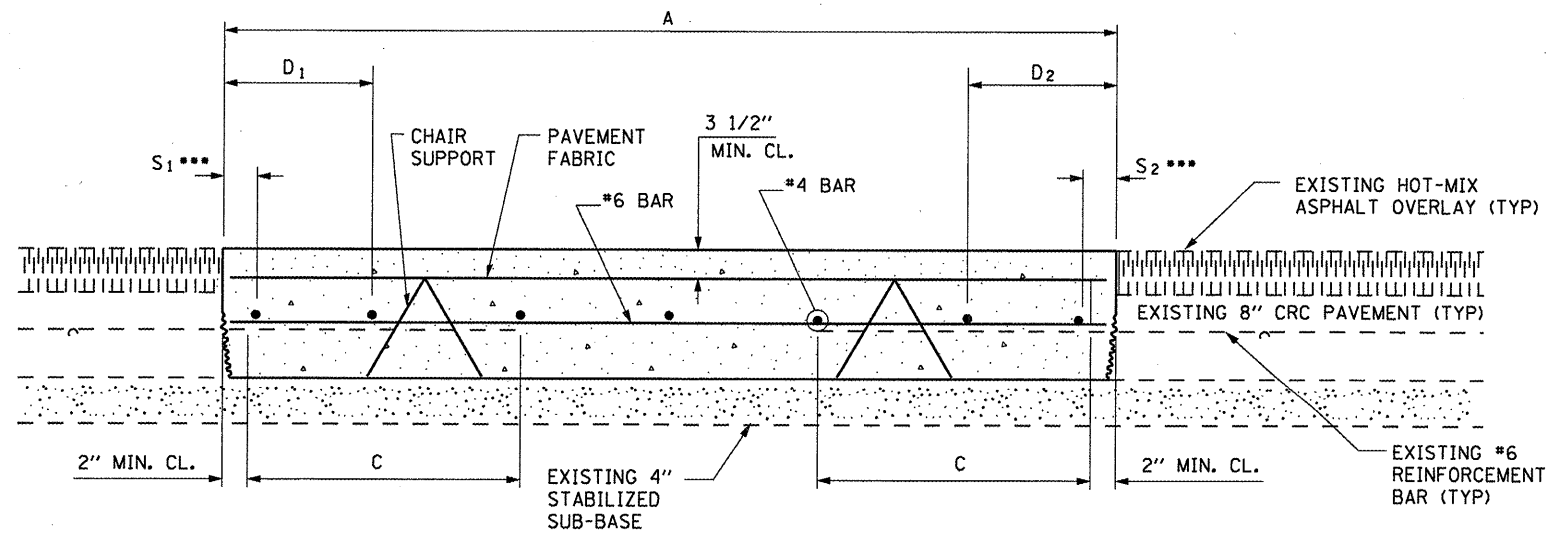


EXISTING PAVEMENT SAWING DETAIL
(AGAINST BITUMINOUS SHOULDER)

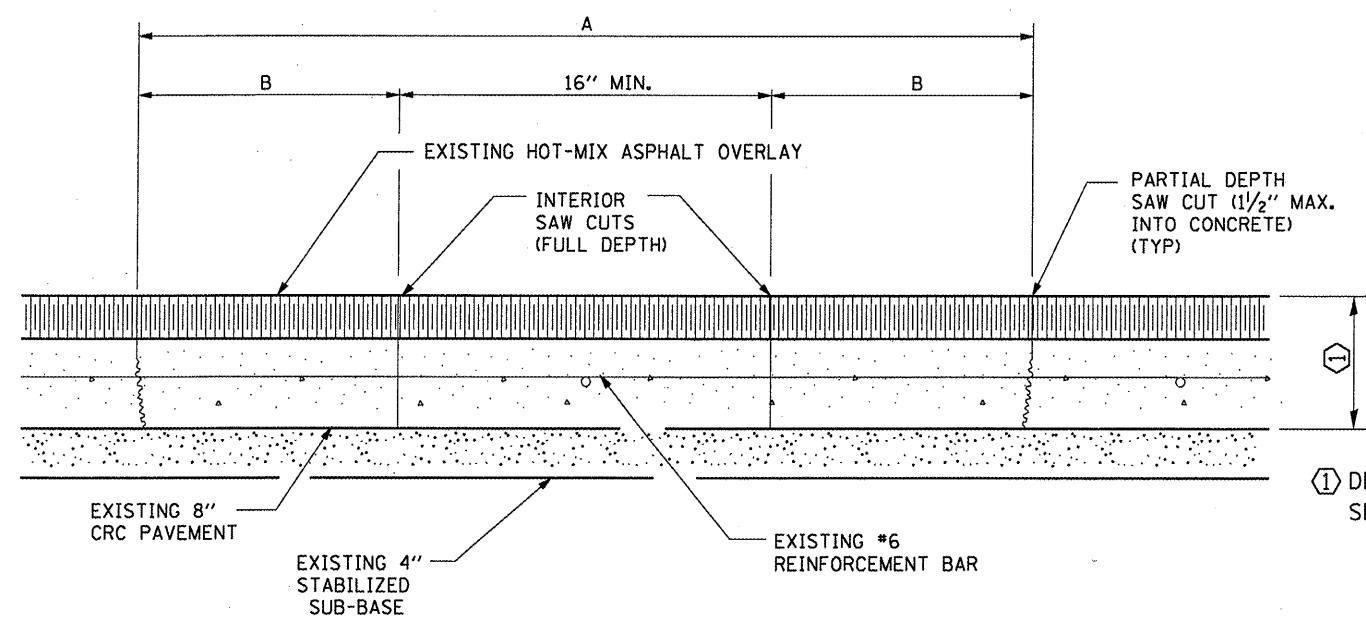


PROPOSED PAVEMENT DETAIL
(AGAINST BITUMINOUS SHOULDER)

EXISTING LONGITUDINAL REINFORCEMENT BARS	A (min.)	B (min.)	C (min.)
No. 6	6'-0"	24"	19"



PROPOSED CLASS A PATCHING DETAIL



EXISTING PAVEMENT SAW CUTTING DETAIL

① DEPTH VARIES
SEE TYPICAL SECTIONS

NOTES:

- EVERY 3rd INTERSECTION MUST BE TIED
- LAP NEW REINFORCEMENT WITH EXISTING LONGITUDINAL REINFORCEMENT
- VARIABLES: WHERE S₁ AND S₂ ARE 2 1/2" MIN. AND 12" MAX. D₁ = 2(S₁) AND D₂ = 2(S₂)