

| | | | | |
|---------------------|-------------------|--------------------|--------------|-----------|
| F.A.S. RTE. | SECTION | COUNTY | TOTAL SHEETS | SHEET NO. |
| 2370 | (29,32,33,34)RS-3 | WOODFORD | 56 | 1 |
| FED. ROAD DIST. NO. | ILLINOIS | CONTRACT NO. 68401 | | |

INDEX OF SHEETS

- 1 COVER SHEET
- 2-3 COMMITMENTS AND GENERAL NOTES
- 4 SUMMARY OF QUANTITIES
- 5 PROJECT LINE DIAGRAM
- 6 TYPICAL SECTIONS
- 7-13 SCHEDULES OF QUANTITIES
- 14-45 PLAN SHEETS
- 46-49 GUARDRAIL SPECIAL DETAIL
- 50 SIDEROAD AND ENTRANCE DETAILS
- 51-56 CADD STANDARDS

STATE OF ILLINOIS
DEPARTMENT OF TRANSPORTATION
DIVISION OF HIGHWAYS
**PROPOSED
HIGHWAY PLANS**

FAS 2370 ROUTE IL 26
SECTION (29,32,33,34)RS-3
PROJECT HSIP-RS-2370(115)
TYPE OF IMPROVEMENT RESURFACING/SAFETY
WOODFORD COUNTY
C-94-050-04

HIGHWAY STANDARDS:

| | | |
|-----------|-----------|-----------|
| 000001-05 | 635011-02 | 701306-02 |
| 406201-01 | 701006-03 | 701311-03 |
| 630001-08 | 701011-02 | 701901-01 |
| 630301-05 | 701201-03 | 780001-02 |
| 635006-03 | 701301-03 | 781001-03 |

STATION EQUATIONS:

STA. 156 + 41.10(BK) = STA. 166 + 41.10(AH)
STA. 310 + 81.30(BK) = STA. 310 + 54.50(AH)
STA. 377 + 99.30(BK) = STA. 378 + 00.50(AH)
STA. 393 + 82.65(BK) = STA. 393 + 83.39(AH)
STA. 413 + 87.18(BK) = STA. 413 + 89.18(AH)

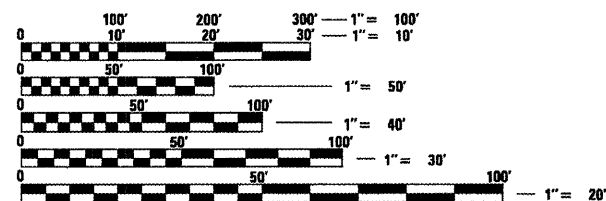
CADD STANDARDS:

- 406101-D4
- 440001-D4
- 630101-D4

BRIDGE OMISSIONS:

STA. 98 + 32 TO STA. 99 + 58
STA. 217 + 08 TO STA. 219 + 03
STA. 351 + 15 TO STA. 352 + 95
STA. 423 + 79 TO STA. 424 + 69
STA. 508 + 69 TO STA. 509 + 59

ADT - 2150
MU - 225 (10%)



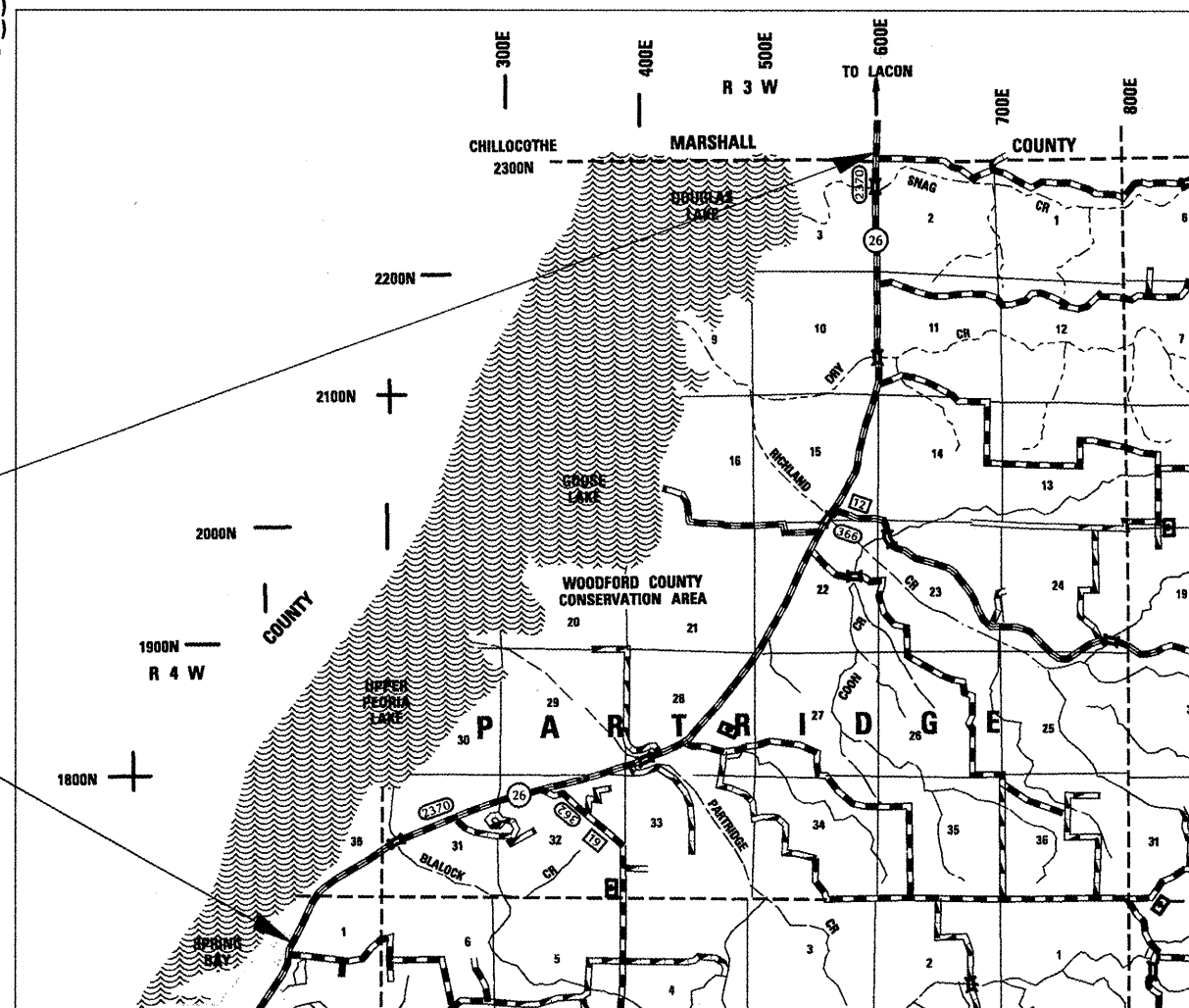
FULL SIZE PLANS HAVE BEEN PREPARED USING STANDARD ENGINEERING SCALES. REDUCED SIZED PLANS WILL NOT CONFORM TO STANDARD SCALES. IN MAKING MEASUREMENTS ON REDUCED PLANS, THE ABOVE SCALES MAY BE USED.

J.U.L.I.E.
JOINT UTILITY LOCATION INFORMATION FOR EXCAVATION
1-800-892-0123
OR 811

PROJECT ENGINEER: CHRISTOPHER MAUSHARD (309)671-3453
PROJECT MANAGER: SOBHI LABABIDI (309)671-3460
CATALOG NO. 032907-00D
CONTRACT NO. 68401

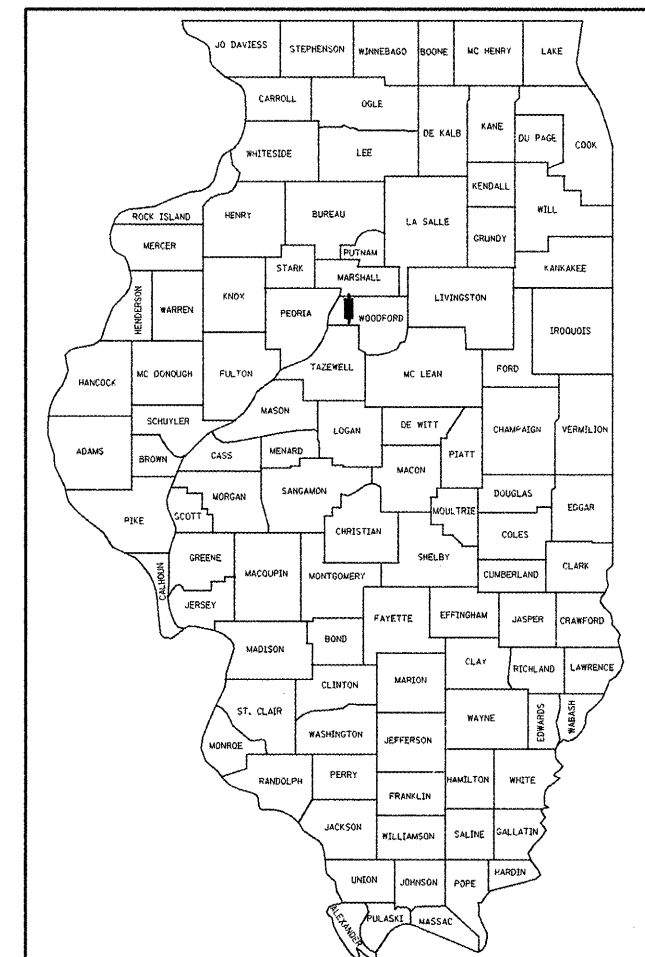
PROJECT ENDS
STA. 513 + 07

PROJECT BEGINS
STA. 30 + 00



GROSS LENGTH = 47,330 FT. = 8.964 MILE
NET LENGTH = 46,649 FT. = 8.835 MILE

D-94-035-04



LOCATION OF SECTION INDICATED THUS: - [thick black line] -

PROJECT DESCRIPTION: RESURFACING AND SAFETY IMPROVEMENTS ON IL 26 FROM THE MARSHALL COUNTY LINE TO THE NORTH CITY LIMITS OF SPRING BAY

STATE OF ILLINOIS
DEPARTMENT OF TRANSPORTATION
DIVISION OF HIGHWAYS

SUBMITTED JAN 30 20 09

[Signature]
DEPUTY DIRECTOR OF HIGHWAYS, REGION ENGINEER

May 8, 20 09
[Signature]
ENGINEER OF DESIGN AND ENVIRONMENT

May 8, 20 09
[Signature]
DIRECTOR OF HIGHWAYS, CHIEF ENGINEER

**PRINTED BY THE AUTHORITY
OF THE STATE OF ILLINOIS**