

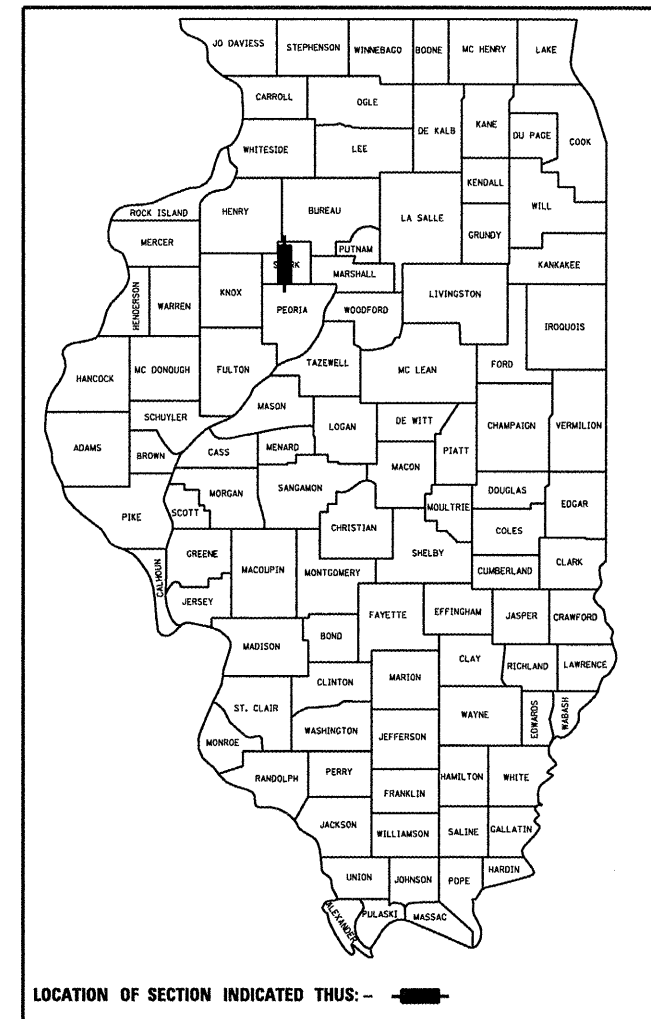
F.A.P. RTE.	SECTION	COUNTY	TOTAL SHEETS	SHEET NO.
22	(14,128)RS-3;129RS-3	STARK	25	1
FED. ROAD DIST. NO.	ILLINOIS	CONTRACT NO. 68499		

STATE OF ILLINOIS
DEPARTMENT OF TRANSPORTATION
DIVISION OF HIGHWAYS
**PROPOSED
HIGHWAY PLANS**

D-94-081-05

- 1 COVER SHEET
- 2 INDEX OF SHEETS AND GENERAL NOTES
- 3 - 4 SUMMARY OF QUANTITIES
- 5 - 6 TYPICAL SECTIONS
- 7 - 8 SCHEDULE OF QUANTITIES
- 9 LINE DIAGRAM
- 10 - 14 RECOVERY TIES
- 15 INTERSECTION DETAILS
- 16 - 25 DISTRICT STANDARDS

FAP ROUTE 22 (IL 78)
SECTION (14,128)RS-3;129RS-3
STARK COUNTY
C-94-107-05
PROJECT NO. ESP-0022(075)

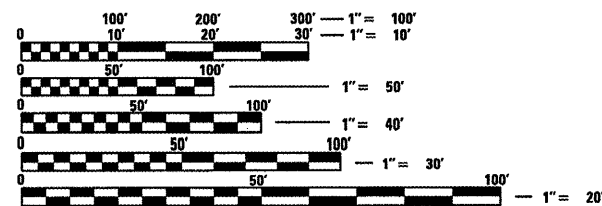


HIGHWAY STANDARDS

- 442201-03 701311-03
- 630001-08 701336-05
- 701006-03 701901-01
- 701011-02 780001-02
- 701301-03 781001-03
- 701306-02

IL ROUTE 78

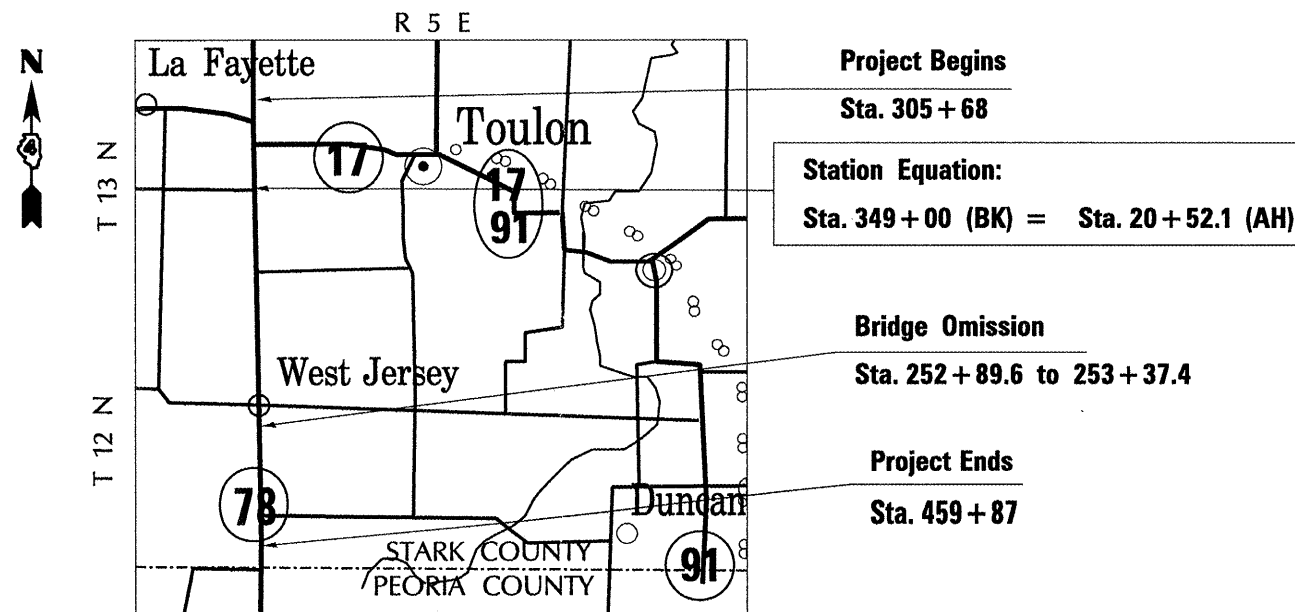
- ADT = 2750 (2007)
- MU = 8.1% (2007)
- SU = 5.5% (2007)
- MINOR ARTERIAL RURAL



FULL SIZE PLANS HAVE BEEN PREPARED USING STANDARD ENGINEERING SCALES. REDUCED SIZED PLANS WILL NOT CONFORM TO STANDARD SCALES. IN MAKING MEASUREMENTS ON REDUCED PLANS, THE ABOVE SCALES MAY BE USED.

J.U.L.I.E.
JOINT UTILITY LOCATION INFORMATION FOR EXCAVATION
1-800-892-0123
OR 811

PROJECT ENGINEER: CHRISTOPHER MAUSHARD 309-671-3453
DESIGN ENGINEER: CHRISTINE L. EVERS 309-671-3477
CATALOG NO. 033097-00D
CONTRACT NO. 68499



DESCRIPTION OF PROJECT:

This project consists of bituminous surface removal, pavement patching and bituminous resurfacing located north of IL 17 (W) to the Peoria County line.

GROSS LENGTH = 48,267.3 FT. = 9.14 MILE
NET LENGTH = 48,219.5 FT. = 9.13 MILE

STATE OF ILLINOIS
DEPARTMENT OF TRANSPORTATION
DIVISION OF HIGHWAYS

SUBMITTED March 26, 2009

John E. Brown
DEPUTY DIRECTOR OF HIGHWAYS, REGION ENGINEER

May 8, 2009
Charles J. Ingersoll
ENGINEER OF DESIGN AND ENVIRONMENT

May 8, 2009
Christine M. Reed
DIRECTOR OF HIGHWAYS, CHIEF ENGINEER

**PRINTED BY THE AUTHORITY
OF THE STATE OF ILLINOIS**

GENERAL NOTES

COMMITMENTS

There are no commitments for this project.

ENVIRONMENTAL REVIEWS

Prior to the use of any proposed borrow areas, use areas (temporary access roads, detours, run-arounds, etc.) and/or waste areas, the Contractor shall file the required environmental resource request surveys according to Section 107.22 of the Standard Specifications. These surveys are required in order for the Department to conduct cultural and biological resource surveys for the proposed site.

Prior to any waste materials being removed from the construction site the required environmental resource surveys will need to be obtained and filed by the Contractor. Excess waste products removed from the construction site shall be disposed of as required in Section 202.03 of the Standard Specifications.

Any protruding metal bars shall be removed prior to the disposal of broken concrete at approved disposal sites.

The required environmental resource documentation shall include the following:

- * BDE Form 2289 (Environmental Survey Request)
- * A location map showing the size limits and location of the use area
- * Signed property owner agreement form-D4 PI0100
- * Color photographs depicting the use area
- * Borrow Area Entry Agreement form-D4 PI0101

Please note that a minimum of two weeks shall be allowed for the District to obtain the required environmental clearances.

PAVEMENT STATIONING NUMBERS & PLACEMENT

The Contractor shall provide labor and materials required to imprint pavement station numbers in the finished surface of the pavement and/or overlay. The numbers shall be approximately 3/4 inch (20mm) wide, 5 inches (125 mm) high and 5/8 inch (15 mm) deep.

The pavement station numbers shall be installed as specified herein:

Interval – 200 feet (English stationing) or 100 meters (metric stationing)

Bottom of Numbers – 6 inches (150 mm) from the inside edge of the pavement marking

Location:

- 626 2,3, & 5 Lane Pavements – right edge of pavement in direction of increasing stations
- 626 Multi-Lane Divided Roadways – outside edge of pavement in both directions
- 626 Ramps – along baseline edge of pavement

Position – stations shall be placed so they can be read from the adjacent shoulder

Format – English (Metric) pavement stations shall use this format "XXX (XX+X00)" where X represents the pavement station

This work will not be paid for separately, but will be considered included in the cost of the associated pavement and/or overlay pay items.

HOT-MIX ASPHALT MIXTURE REQUIREMENTS

The following mixture requirements are applicable for this project:

Mixture Use(s):	Surface Course 1 1/2"	Level Binder 3/4"	CI D Patches
AC/PG:	PG 64-22	SBS or SBR 70-22	PG 64-22
RAP% (Max):**	15%	0%	25%
Design Air Voids:	4.0% @ N=50	3.0% @ N=50	4.0% @ N=50
Mixture Composition: (Gradation Mixture)	IL 9.5 or IL12.5	IL 4.75	IL 19.0
Friction Aggregate:	Mixture D (Dolomite only)	N.A.	N.A.

** If RAP option is selected, the asphalt cement grade may need to be adjusted, this will be determined by the Materials Engineer.

PAVING SURFACE COURSE

Continuous paving operations on the main roadway shall be maintained at all times during the construction of the hot-mix asphalt surface. No interruptions for side roads, entrances, turn lanes, etc. will be allowed.

ENGINEERS FIELD OFFICE

Add the following sentence to the end of paragraph 670.02 (i) and 670.04 (e):
All of the telephone lines provided shall have unpublished numbers.

PROJECT SPECIFIC NOTES

All survey marker ties and survey markers shall be located in the field and distances verified by a Licensed Land Surveyor prior to any milling operation. The survey markers shall be reset, at the direction of a Licensed Land Surveyor, after all paving and striping operations are complete. It shall be the responsibility of the Surveyor to file a new monument record incorporating distances to the Permanent Survey Ties at the Stark County Courthouse.

A copy of all monument records produced from this project shall be sent to the Chief of Surveys, Illinois Department of Transportation, District 4, Peoria.

All labor and material for this work will be considered as included in the agreed unit bid price for PERMANENT SURVEY MARKERS, TYPE I.

All new permanent survey ties shall be cast in place of CLASS SI CONCRETE.

FILE NAME = D468499-plen.dgn	USER NAME = everscl	DESIGNED - DRAWN -	REVISED - REVISED -	STATE OF ILLINOIS DEPARTMENT OF TRANSPORTATION	GENERAL NOTES	F.A.P. RTE. 22	SECTION (14,128)RS-3;129RS-3	COUNTY STARK	TOTAL SHEETS 25	SHEET NO. 2
PLOT SCALE = 200,0000 ' / IN.	CHECKED -	REVISED -	REVISED -	SCALE: _____ SHEET NO. ____ OF ____ SHEETS STA. _____ TO STA. _____		CONTRACT NO. 68499 ILLINOIS FED. AID PROJECT				
PLOT DATE = 3/26/2009	DATE -	REVISED -	REVISED -							

SUMMARY OF QUANTITIES

CONSTR. CODE
STARK CO.
100% FEDERAL
ROADWAY
I000
RURAL

CODE NO.	ITEM	UNIT	TOTAL QUANTITY	CONSTR. CODE
40600215	POLYMERIZED BITUMINOUS MATERIALS (PRIME COAT)	TON	98	98
40600300	AGGREGATE (PRIME COAT)	TON	485	485
40600895	CONSTRUCTING TEST STRIP	EACH	1	1
40600982	HOT-MIX ASPHALT SURFACE REMOVAL - BUTT JOINT	SQ YD	611	611
40600990	TEMPORARY RAMP	SQ YD	240	240
40603335	HOT-MIX ASPHALT SURFACE COURSE, MIX "D", N50	TON	20361	20361
44000156	HOT-MIX ASPHALT SURFACE REMOVAL, 1 3/4"	SQ YD	241587	241587
44201777	CLASS D PATCHES, TYPE II, 11 INCH	SQ YD	1934	1934
44201781	CLASS D PATCHES, TYPE III, 11 INCH	SQ YD	274	274
44201783	CLASS D PATCHES, TYPE IV, 11 INCH	SQ YD	497	497
48101200	AGGREGATE SHOULDERS, TYPE B	TON	1343	1343
* 63000001	STEEL PLATE BEAM GUARD RAIL, TYPE A, 6 FOOT POSTS	FOOT	1900	1900
* 63100167	TRAFFIC BARRIER TERMINAL, TYPE 1 (SPECIAL) TANGENT	EACH	12	12
63200600	STEEL PLATE BEAM GUARD RAIL REMOVAL, SINGLE RAIL	FOOT	2350	2350
66700205	PERMANENT SURVEY MARKERS, TYPE I	EACH	10	10
66700605	PERMANENT SURVEY TIES	EACH	40	40
67000400	ENGINEER'S FIELD OFFICE, TYPE A	CAL MO	2	2
67100100	MOBILIZATION	L SUM	1	1
70100460	TRAFFIC CONTROL AND PROTECTION, STANDARD 701306	L SUM	1	1
70100600	TRAFFIC CONTROL AND PROTECTION, STANDARD 701336	L SUM	1	1
70300100	SHORT-TERM PAVEMENT MARKING	FOOT	19726	19726
70300210	TEMPORARY PAVEMENT MARKING - LETTERS AND SYMBOLS	SQ FT	63	63
70300220	TEMPORARY PAVEMENT MARKING - LINE 4"	FOOT	159479	159479

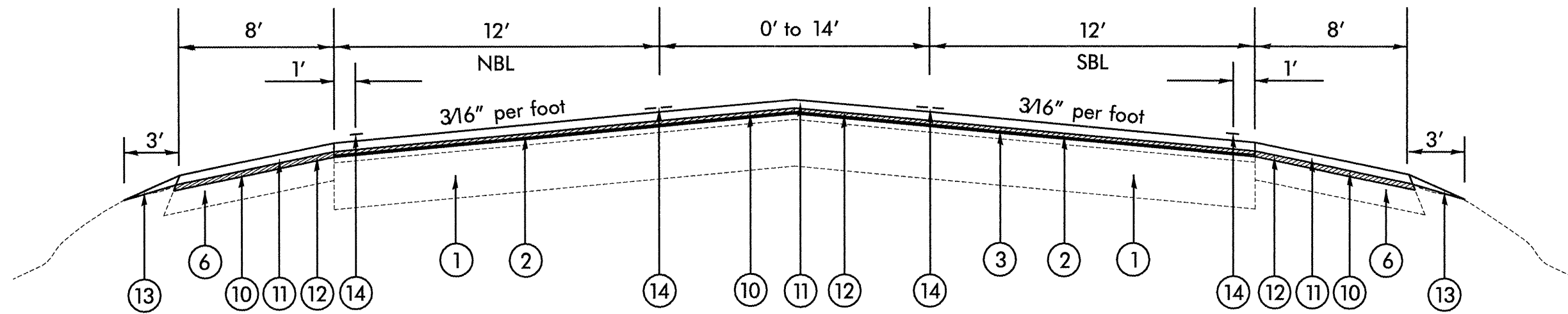
* Denotes Specialty Items

SUMMARY OF QUANTITIES

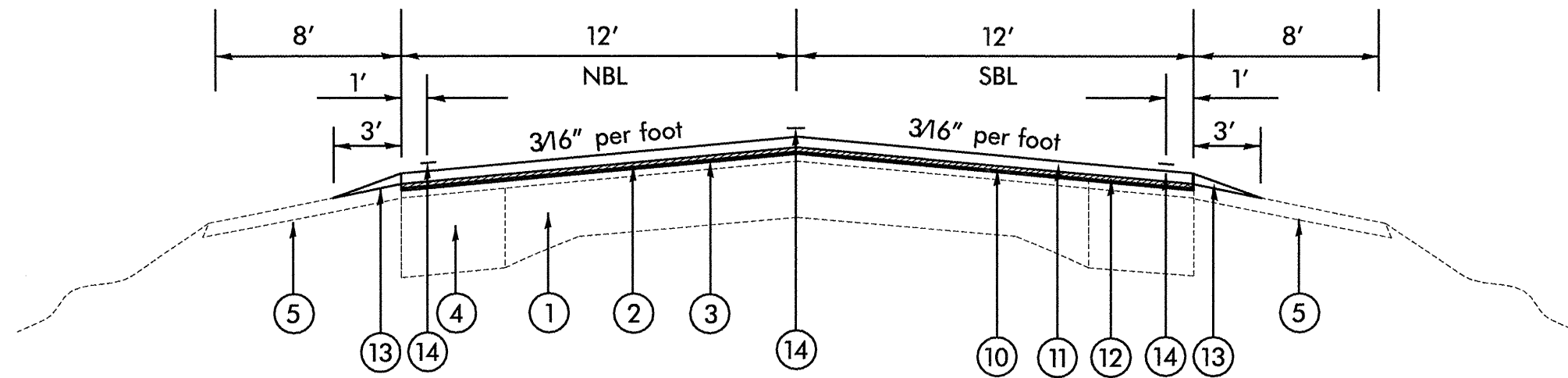
CONSTR. CODE
STARK CO.
100% FEDERAL
ROADWAY
1000
RURAL

CODE NO.	ITEM	UNIT	TOTAL QUANTITY	ROADWAY	1000	RURAL
70300250	TEMPORARY PAVEMENT MARKING - LINE 8"	FOOT	290		290	
70300260	TEMPORARY PAVEMENT MARKING - LINE 12"	FOOT	651		651	
70300280	TEMPORARY PAVEMENT MARKING - LINE 24"	FOOT	24		24	
70301000	WORK ZONE PAVEMENT MARKING REMOVAL	SQ FT	6427		6427	
* 78005100	EPOXY PAVEMENT MARKING - LETTERS AND SYMBOLS	SQ FT	63		63	
* 78005110	EPOXY PAVEMENT MARKING - LINE 4"	FOOT	159479		159479	
* 78005140	EPOXY PAVEMENT MARKING - LINE 8"	FOOT	290		290	
* 78005150	EPOXY PAVEMENT MARKING - LINE 12"	FOOT	651		651	
* 78005180	EPOXY PAVEMENT MARKING - LINE 24"	FOOT	24		24	
* 78100100	RAISED REFLECTIVE PAVEMENT MARKER	EACH	707		707	
* 78200410	GUARDRAIL MARKERS, TYPE A	EACH	30		30	
* 78201000	TERMINAL MARKER - DIRECT APPLIED	EACH	12		12	
78300200	RAISED REFLECTIVE PAVEMENT MARKER REMOVAL	EACH	707		707	
X0322729	MATERIAL TRANSFER DEVICE	TON	20338		20338	
<input type="checkbox"/> X2503100	MOWING	UNIT	483		483	
X4067107	POLYMERIZED LEVELING BINDER (MACHINE METHOD), IL-4.75, N50	TON	10181		10181	
Z0013798	CONSTRUCTION LAYOUT	L SUM	1		1	

* Denotes Specialty Items
 NON-PARTICIPATING
 100% STATE

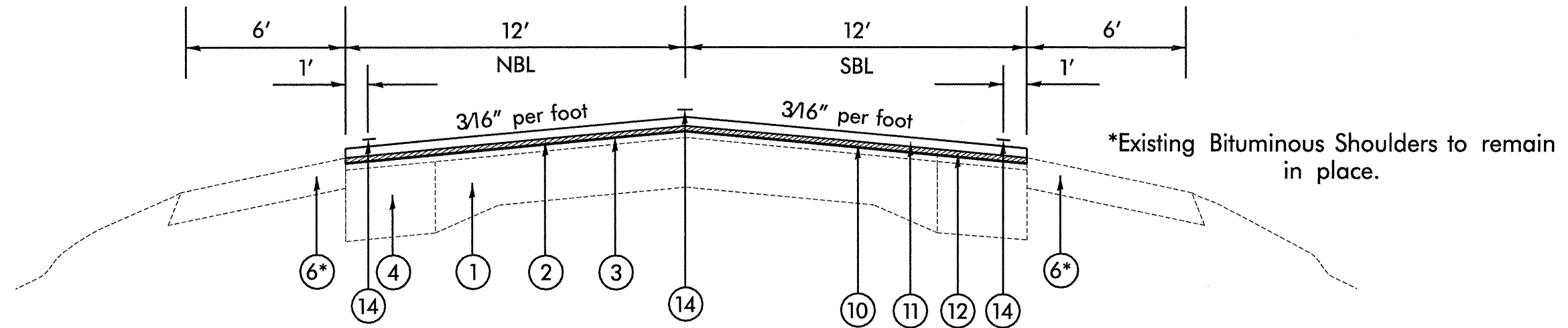


Typical Section
Sta. 305+68 to 340+00

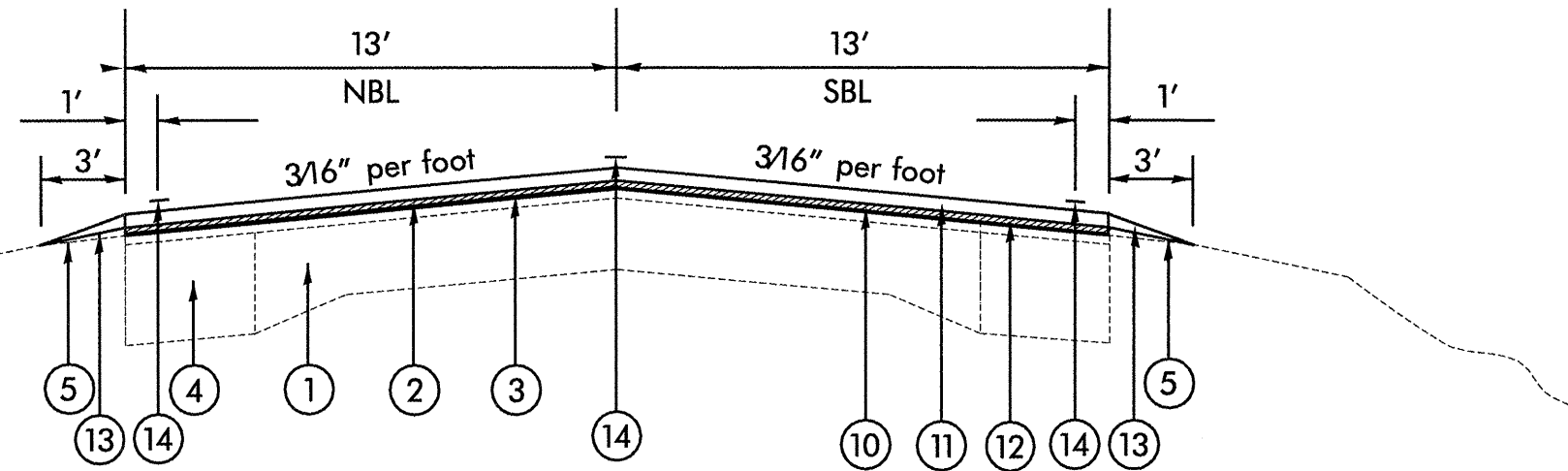


Typical Section
Sta. 340+00 to 349+00
Station Equation 349+00(BK) = 20+52.1(AH)
Sta. 20+52.1 to 155+30
Sta. 158+86 to 220+62
Sta. 224+35 to 252+89.6
Bridge Omission Sta. 252+89.6 to 253+37.4
Sta. 253+37.4 to 283+26

- ① Existing PCC Pavement
- ② Existing Bituminous Overlay
- ③ Existing Area Reflective Crack Control
- ④ Existing Bituminous Base Course Widening 9"
- ⑤ Existing Aggregate Shoulder
- ⑥ Existing Bituminous Shoulder
- ⑩ Proposed Hot-Mix Asphalt Surface Removal 1 3/4"
- ⑪ Proposed Hot-Mix Asphalt Surface Course, Mix "D", N50 1 1/2"
- ⑫ Proposed Polymerized Leveling Binder (MM), IL-4.75, N50 3/4"
- ⑬ Proposed Aggregate Shoulder, Type B
- ⑭ Proposed Epoxy Pavement Marking



Typical Section
Sta. 155+30 to 158+86
Sta. 220+62 to 224+35



Typical Section
Sta. 283+26 to 459+87

- ① Existing PCC Pavement
- ② Existing Bituminous Overlay
- ③ Existing Area Reflective Crack Control
- ④ Existing Bituminous Base Course Widening 9"
- ⑤ Existing Aggregate Shoulder
- ⑥ Existing Bituminous Shoulder

- ⑩ Proposed Hot-Mix Asphalt Surface Removal 1 3/4"
- ⑪ Proposed Hot-Mix Asphalt Surface Course, Mix "D", N50 1 1/2"
- ⑫ Proposed Polymerized Leveling Binder (MM), IL-4.75, N50 3/4"
- ⑬ Proposed Aggregate Shoulder, Type B
- ⑭ Proposed Epoxy Pavement Marking

*Existing Bituminous Shoulders to remain in place.

FILE NAME = D468499-plan.dgn	USER NAME = everocl	DESIGNED -	REVISED -	STATE OF ILLINOIS DEPARTMENT OF TRANSPORTATION	TYPICAL SECTION			F.A.P. RTE.	SECTION	COUNTY	TOTAL SHEETS	SHEET NO.
	PLOT SCALE = 200,0000' / IN.	DRAWN -	REVISED -		NOT TO SCALE	SHEET NO. OF SHEETS	STA. TO STA.	22	(14,128)RS-3;129RS-3	STARK	25	6
PLOT DATE = 3/26/2009	CHECKED -	DATE -	REVISED -				CONTRACT NO. 68499			ILLINOIS FED. AID PROJECT		

RESURFACING TABLE

Location	Length	Width	Area	HMA Surface Removal Butt Joint	Temporary Ramp	HMA Surface Removal 1 3/4"	Polymerized Bituminous Materials (Prime Coat)	Aggregate Materials (Prime Coat)	HMA Surf Cse Mix D N50	Polymerized Leveling Binder MM, 3/4"	Aggregate Shoulders Type B	Material Transfer Device
IL 78												
305+68.00 TO 305+98.00	30	42	140	140	13.3		0.1	0.3	11.8	5.9	0.9	11.8
305+98.00 TO 340+00.00	3402	VAR	118615			118475	47.4	237.2	9963.7	4981.8	96.9	9963.7
340+00.00 TO 349+00.00	900	24	2400			2400	1	4.8	201.6	100.8	25.6	201.6
349+00.00 TO 020+52.10	Station Equation: Sta. 349+00 (BK) = Sta. 20+52.1 (AH)											
020+52.10 TO 155+30.00	13477.9	24	35941.07			35941.07	14.4	71.9	3019	1509.5	383.7	3019
155+30.00 TO 158+86.00	356	24	949.33			949.33	0.4	1.9	79.7	39.9	0	79.7
158+86.00 TO 220+62.00	6176	24	16469.33			16469.33	6.6	32.9	1383.4	691.7	175.8	1383.4
220+62.00 TO 224+35.00	373	24	994.67			994.67	0.4	2	83.6	41.8	0	83.6
224+35.00 TO 252+59.60	2824.6	24	7532.27			7532.27	3	15.1	632.7	316.4	80.4	632.7
252+59.60 TO 252+89.60	30	24	80	80	13.3		0.03	0.2	6.7	3.4	0.9	6.7
252+89.60 TO 253+37.40	Bridge Omission											
253+37.00 TO 253+67.00	30	24	80	80	13.3		0.03	0.2	6.7	3.4	0.9	6.7
253+67.00 TO 283+26.00	2959	24	7890.67			7890.67	3.2	15.8	662.8	331.4	84.2	662.8
283+26.00 TO 459+57.00	17631	26	50934			50934	20.4	101.9	4278.5	2139.2	502	4278.5
459+57.00 TO 459+87.00	30	26	86.67	86.67	13.3		0.03	0.2	7.3	3.6	0.9	7.3
Sideroads				224*	186.2		0.1	0.4	23.5	11.8	-9.6**	
Total	48219.5	310	242113	611	240	241587	98	485	20361	10181	1343	20338

* Area taken from IL 17 (East). See Pavement Marking Detail Sheet.

** Aggregate shoulder quantities are subtracted in the sideroad locations.

PRIME COAT APPLICATION RATES		
SURFACE TYPE	BITUMINOUS	AGGREGATE
	PRIME COAT (GAL/SQ YD)	PRIME COAT (LB/SQ YD)
ON COLD MILLED SURFACE	0.1	4
EXISTING PAVEMENT	0.05	4
FOG COAT ON NEW BINDER	0.03	2
0.004 TONS PER GALLON FOR BITUMINOUS PRIME COAT		

BITUMINOUS & AGGREGATE CONVERSION FACTORS	
SURFACE TYPE	
BIT. SURF. COURSES	112 LB / SQ YD / IN
ALL OTHER BIT.	112 LB / SQ YD / IN
AGGREGATE SHOULDERS	2.05 TONS / CU YD

Epoxy Pavement Marking & Temporary Paint Pavement Marking							Raised Reflective Pavement Markers	Raised Reflective Pavement Markers Removal
Location	4" (W) Foot	4" (Y) Foot	8" (W) Foot	12" (Y) Foot	24" Foot	Ltrs & Symbols Sq Ft	Each	Each
305+68.00 TO 340+00.00	6914	11,000	290	651	24	63	145	145
340+00.00 TO 349+00.00	1800	225					12	12
Station Equation:								
Sta. 349+00 (BK) = Sta. 20+52.1 (AH)								
20+52.10 TO 459+57	87810	10976					549	549
459+57 TO 459+87	60	8					1	1
No Passing Zones*								
TOTAL	96584	62895	290	651	24	63	707	707

PERMANENT SURVEY MARKERS, TYPE I	
LOCATION	EACH
See Recovery Tie Sheets for locations	10
TOTAL	10

PERMANENT SURVEY TIES	
LOCATION	EACH
See Recovery Tie Sheets for locations	40
TOTAL	40

ENGINEER'S FIELD OFFICE	
LOCATION	CAL MO
Jobsite	2
TOTAL	2

MOBILIZATION	
LOCATION	L SUM
Jobsite	1
TOTAL	1

TRAFFIC CONTROL & PROTECTION, STD 701306	
LOCATION	L SUM
Jobsite	1
TOTAL	1

TRAFFIC CONTROL & PROTECTION, STD 701336	
LOCATION	L SUM
Jobsite	1
TOTAL	1

No Passing Zones	
Location	Length
Left Sta. 340+00 to 342+26	226
Right Sta. 340+00 to 348+66	866
Station Equation: Sta. 349+00 (BK) = Sta. 20+52.1 (AH)	
Right Sta. 130+19 to 148+67	1848
Left Sta. 141+65 to 156+59	1494
Right Sta. 156+95 to 188+27	3132
Left Sta. 167+15 to 182+99	1584
Left Sta. 190+91 to 191+80	89
Right Sta. 193+55 to 214+67	2112
Left Sta. 204+11 to 225+23	2112
Right Sta. 225+23 to 251+63	2640
Left Sta. 235+79 to 253+05	1726
Right Sta. 262+19 to 278+03	1584
Left Sta. 272+75 to 321+75	4900
Right Sta. 285+08 to 321+75	3667
Left Sta. 285+08 to 313+00	2792
Right Sta. 329+50 to 337+00	750
Left Sta. 339+50 to 346+50	700
Right Sta. 367+00 to 375+00	800
Left Sta. 375+00 to 384+00	900
Right Sta. 413+00 to 432+00	1900
Left Sta. 422+40 to 441+50	1910
Right Sta. 440+00 to 459+87	1987
Left Sta. 450+20 to 459+87	967
Total	40686

Guardrail Locations*	Length*	SPBGR Type A 6' Posts	Ty 1 Spl Tangent End Section	Guardrail Markers Type A	Terminal Marker Direct-Applied
Lt. Sta. 318+63.50 TO 322+38.50	375	275.00	2	4	2
Rt. Sta. 318+63.50 TO 322+38.50	375	275	2	4	2
Lt. Sta. 335+63.50 TO 342+38.50	675	575	2	8	2
Rt. Sta. 335+63.50 TO 342+38.50	675	575	2	8	2
Station Equation: Sta. 349+00 (BK) = Sta. 20+52.1 (AH)					
Lt. Sta. 129+90.50 TO 131+90.50	200	100	2	2	2
Rt. Sta. 129+90.50 TO 131+90.50	200	100	2	2	2
Totals		1900	12	28	12

*The Guardrail Station locations include Type 1, Spl End Sections

CLASS D PATCHES, TYPE II, 11"	
LOCATION	SQ YD
Sta. 305+68 to 335+24 (IL 17 E)	628
Station Eqn: Sta. 349+00 (BK) = Sta. 20+52.1 (AH)	
Sta. 335+24 to 60+43.1 (750 N)	456
Sta. 60+43.1 to 192+08.3 (500 N)	354
Sta. 192+08.3 to 290+28.8 (300 N)	387
Sta. 290+28.8 to 459+87	109
TOTAL	1934

CLASS D PATCHES, TYPE III, 11"	
LOCATION	SQ YD
Sta. 305+68 to 335+24 (IL 17 E)	20
Station Eqn: Sta. 349+00 (BK) = Sta. 20+52.1 (AH)	
Sta. 335+24 to 60+43.1 (750 N)	100
Sta. 60+43.1 to 192+08.3 (500 N)	80
Sta. 192+08.3 to 290+28.8 (300 N)	57
Sta. 290+28.8 to 459+87	17
TOTAL	274

CLASS D PATCHES, TYPE IV, 11"	
LOCATION	SQ YD
Sta. 305+68 to 335+24 (IL 17 E)	117
Station Eqn: Sta. 349+00 (BK) = Sta. 20+52.1 (AH)	
Sta. 335+24 to 60+43.1 (750 N)	107
Sta. 60+43.1 to 192+08.3 (500 N)	193
Sta. 192+08.3 to 290+28.8 (300 N)	53
Sta. 290+28.8 to 459+87	27
TOTAL	497

CONSTRUCTING TEST STRIP	
LOCATION	EACH
Jobsite	1
TOTAL	1

CONSTRUCTION LAYOUT	
LOCATION	L SUM
Jobsite	1
TOTAL	1

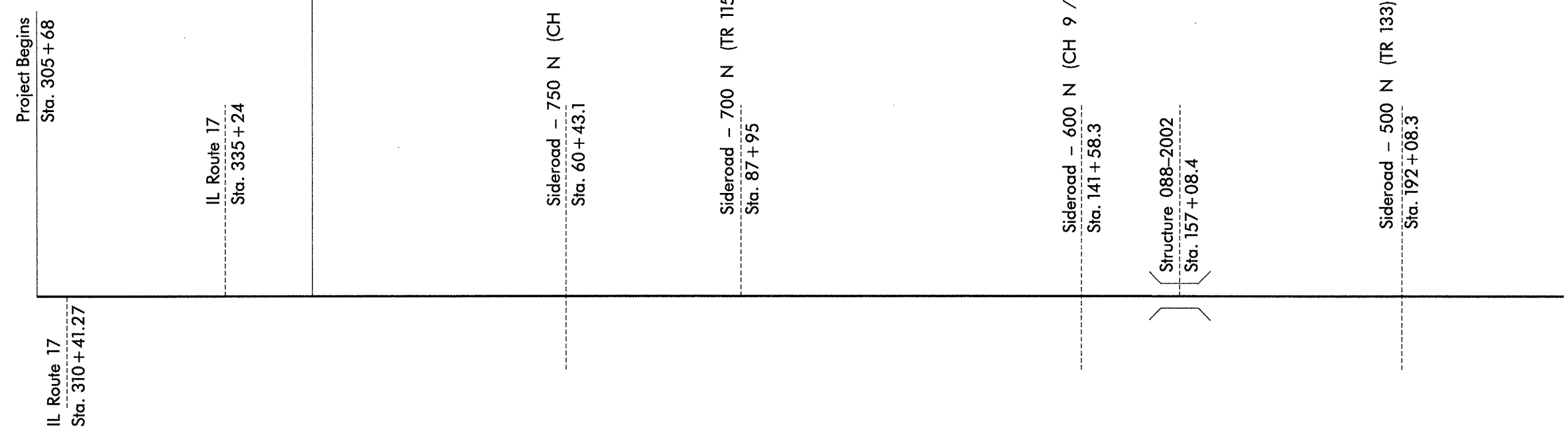
MOWING	
LOCATION	UNIT
Jobsite	483
TOTAL	483

SHORT TERM PAVEMENT MARKING				WORK ZONE PAVEMENT MARKING REMOVAL
Location	Length	Dash	x3 Apps	Sq Ft
305+68.00 TO 349+00.00	4332	433	1299	433
Station Equation: Sta. 349+00 (BK) = Sta. 20+52.1 (AH)				
020+52.10 TO 252+89.60	23237.5	2324	6972	2324
Bridge Omission				
252+89.60 TO 253+37.40	20620	2062	6186	2062
253+37.00 TO 459+57.00			14457	4819
TOTAL				

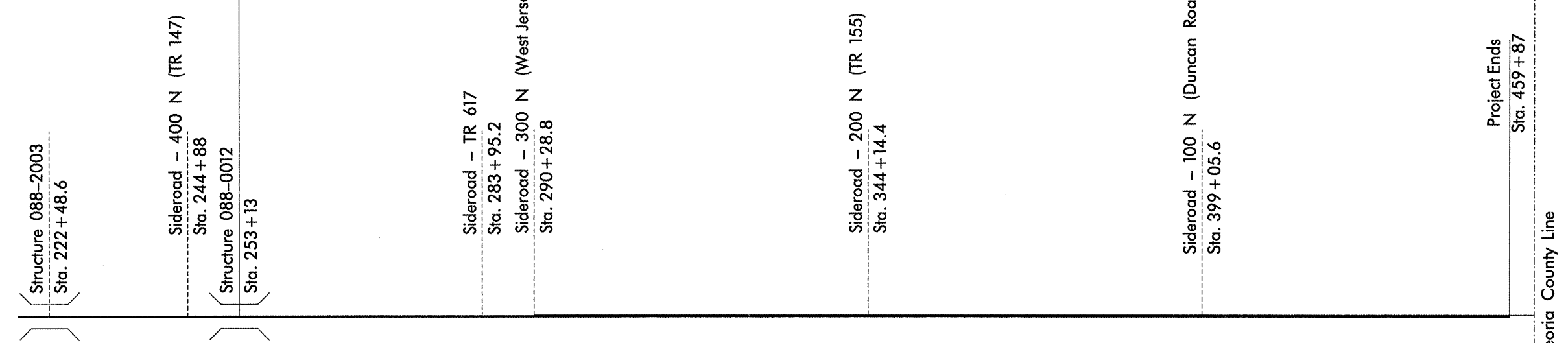
Guardrail Locations	Length	Guardrail Removal
Lt. Sta. 318+76.00 TO 322+26.00	350	350
Rt. Sta. 318+76.00 TO 322+26.00	350	350
Lt. Sta. 335+76.00 TO 342+26.00	650	650
Rt. Sta. 335+76.00 TO 342+26.00	650	650
Station Equation: Sta. 349+00 (BK) = Sta. 20+52.1 (AH)		
Lt. Sta. 130+03.00 TO 131+78.00	175	175
Rt. Sta. 130+03.00 TO 131+78.00	175	175
Totals		2350



Station Equation:
Sta. 349+00 (BK) = Sta. 20+52.1 (AH)



Bridge Omission:
Sta. 252+89.6 to 253+37.4



Stark - Peoria County Line

FILE NAME = D468499-plan.dgn	USER NAME = eversol	DESIGNED -	REVISD -	STATE OF ILLINOIS DEPARTMENT OF TRANSPORTATION	LINE DIAGRAM			F.A.P. RTE.	SECTION	COUNTY	TOTAL SHEETS	SHEET NO.
	PLOT SCALE = 200,0000' / IN.	DRAWN -	REVISD -					22	(14,128)RS-3;129RS-3	STARK	25	9
	PLOT DATE = 3/26/2009	CHECKED -	REVISD -		CONTRACT NO. 68499							
		DATE -	REVISD -		ILLINOIS FED. AID PROJECT							
					SCALE: _____	SHEET NO. ____ OF ____ SHEETS		STA. _____ TO STA. _____				

7039

"MONUMENT RECORD"
OF
LAND SURVEY MONUMENTS
SITUATED IN SECTION 9
TOWNSHIP 12 NORTH
RANGE SE 4TH P.M.
STARK COUNTY, IL

STATE OF ILLINOIS No. 85043
COUNTY OF STARK } SS.
This instrument was filed for record
in the Recorder's Office to the County
aforesaid on the 5th day of Nov.
A.D. 2001 at 10:25 o'clock A.M.
Linda K. Puell
County Clerk and Recorder
By Valeriu J. Wagner
Deputy

This space for Recorder's use only

MONUMENT DESCRIPTION AND REMARKS:
Set Mag Nail in Asphalt
Surface at Corner.

RECOVERY TIE DRAWING 381D1
(NOT TO SCALE)

Prepared By
MISSMAN STANLEY & ASSOCIATES

Illinois Department of Transportation
Division of Highways
ROUTE FAP 22 (IL 78)
SECTION (1288)BR-1
JOB NO. R-94-010-01
SHEET 1 OF 2

STATE OF ILLINOIS }
COUNTY OF ROCK ISLAND } SS
I, GREGORY J. CHLEBICKI HEREBY
CERTIFY THAT THIS DOCUMENT WAS PREPARED
UNDER MY DIRECTION IN ACCORDANCE WITH
THE PUBLIC ACT 765 ILCS 220 AND THE ABOVE
DATA IS GIVEN UNDER MY HAND AND SEAL THIS
25th DAY OF MARCH 2001 A.D.

GREGORY J. CHLEBICKI
ILLINOIS PROFESSIONAL LAND SURVEYOR
NO. 25-2279
MC# 052279

7040 381D2

"MONUMENT RECORD"
OF
LAND SURVEY MONUMENTS
SITUATED IN SECTION 9
TOWNSHIP 12 NORTH
RANGE SE 4TH P.M.
STARK COUNTY, IL

RECOVERY TIE DRAWING
(NOT TO SCALE)

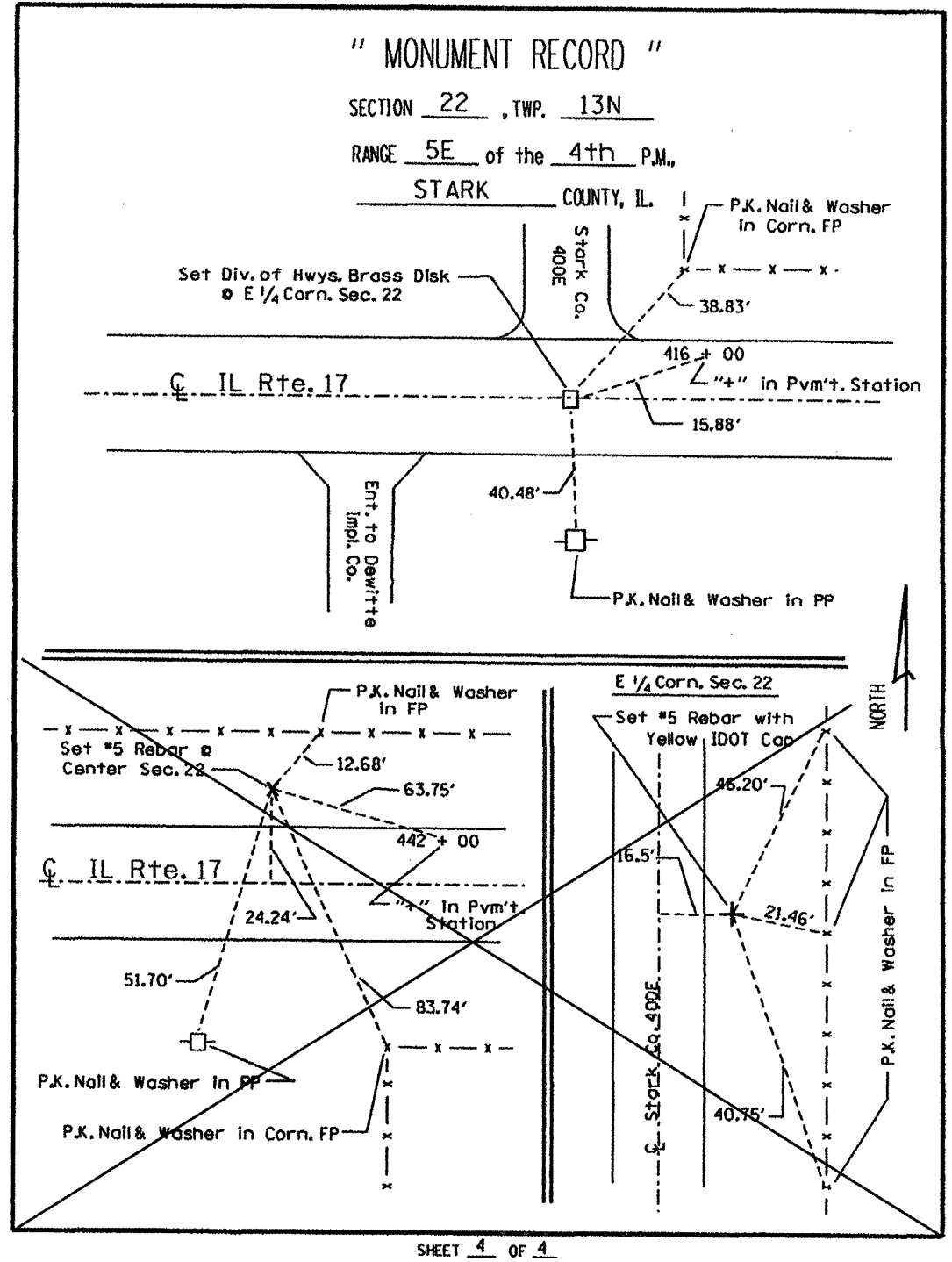
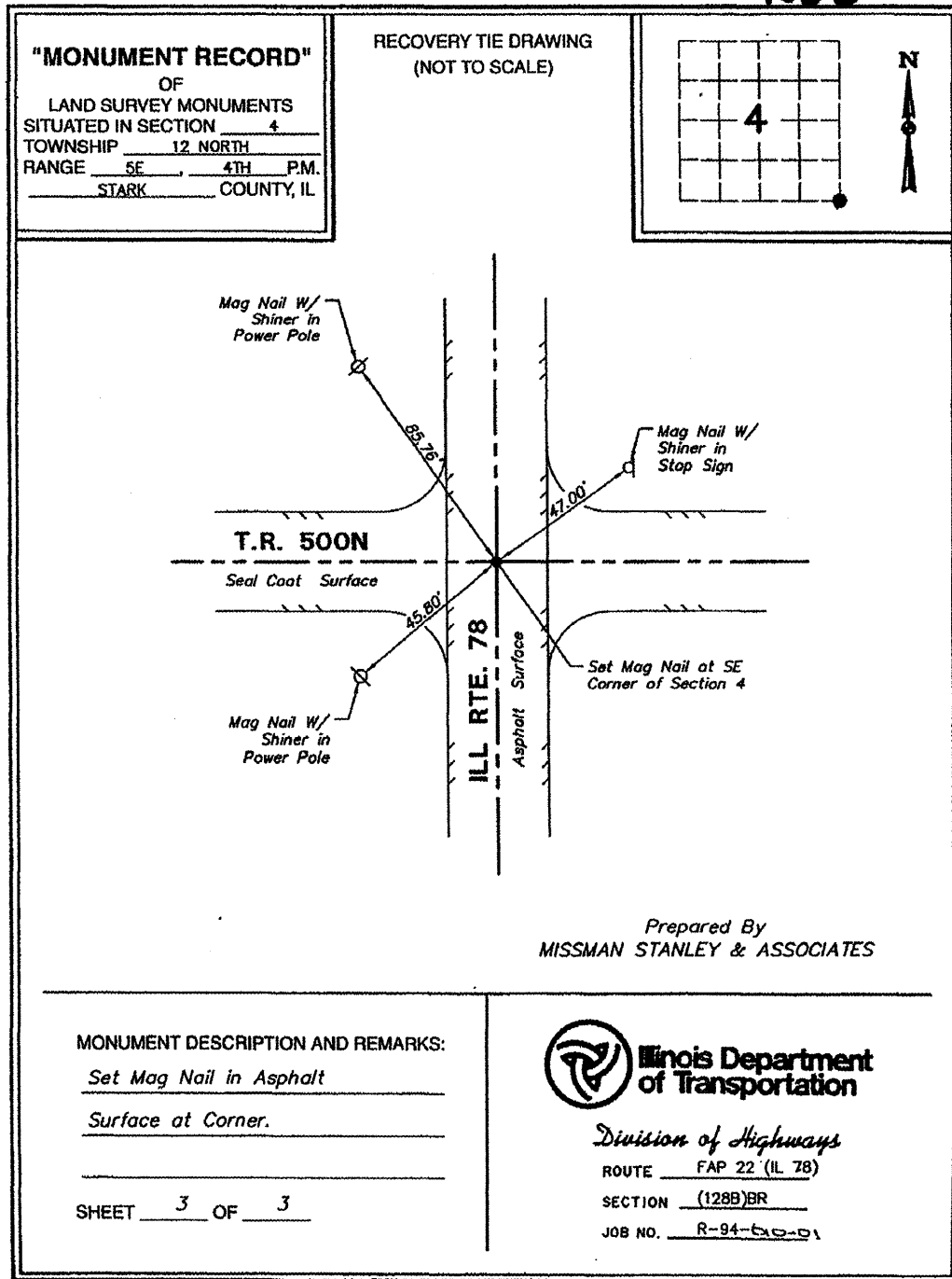
MONUMENT DESCRIPTION AND REMARKS:
Set Mag Nail in Asphalt
Surface at Corner.

Prepared By
MISSMAN STANLEY & ASSOCIATES

Illinois Department of Transportation
Division of Highways
ROUTE FAP 22 (IL 78)
SECTION (1288)BR-1
JOB NO. R-94-010-01
SHEET 2 OF 2

FILE NAME = 0468499-plan.dave.dgn	USER NAME = everscl	DESIGNED - ---	REVISED - ---	STATE OF ILLINOIS DEPARTMENT OF TRANSPORTATION	RECOVERY TIES	F.A.P. RTE. 22	SECTION (14,128)RS-3;129RS-3	COUNTY STARK	TOTAL SHEETS 25	SHEET NO. 10	
PLOT SCALE = 100.0000' / IN.	CHECKED - ---	REVISED - ---	SCALE: _____			SHEET NO. ___ OF ___ SHEETS	STA. _____ TO STA. _____	CONTRACT NO. 68499			
PLOT DATE = 3/26/2009	DATE - ---	REVISED - ---	ILLINOIS FED. AID PROJECT								

7038 381D2



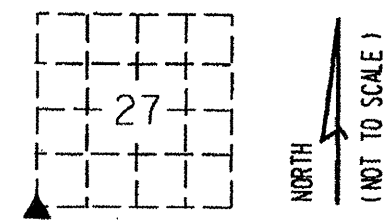
FILE NAME = D468499-plan_dave.dgn	USER NAME = eversol	DESIGNED - ---	REVISED - -----	STATE OF ILLINOIS DEPARTMENT OF TRANSPORTATION	RECOVERY TIES	F.A.P. RTE. 22	SECTION (14,128)RS-3(129RS-3)	COUNTY STARK	TOTAL SHEETS 25	SHEET NO. 11
PLOT SCALE = 100.0000' / IN. CHECKED - ----- DATE - -----				SCALE: ----- SHEET NO. -- OF -- SHEETS STA. ----- TO STA. -----						
PLOT DATE = 3/26/2009 DATE - -----				CONTRACT NO. 68499 ILLINOIS FED. AID PROJECT						

" MONUMENT RECORD "

LAND SURVEY MONUMENTS SITUATED IN
SECTION 27 TWP. 13N
RANGE 5E, of the 4th P.M.,
STARK COUNTY, IL.

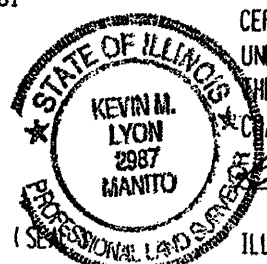
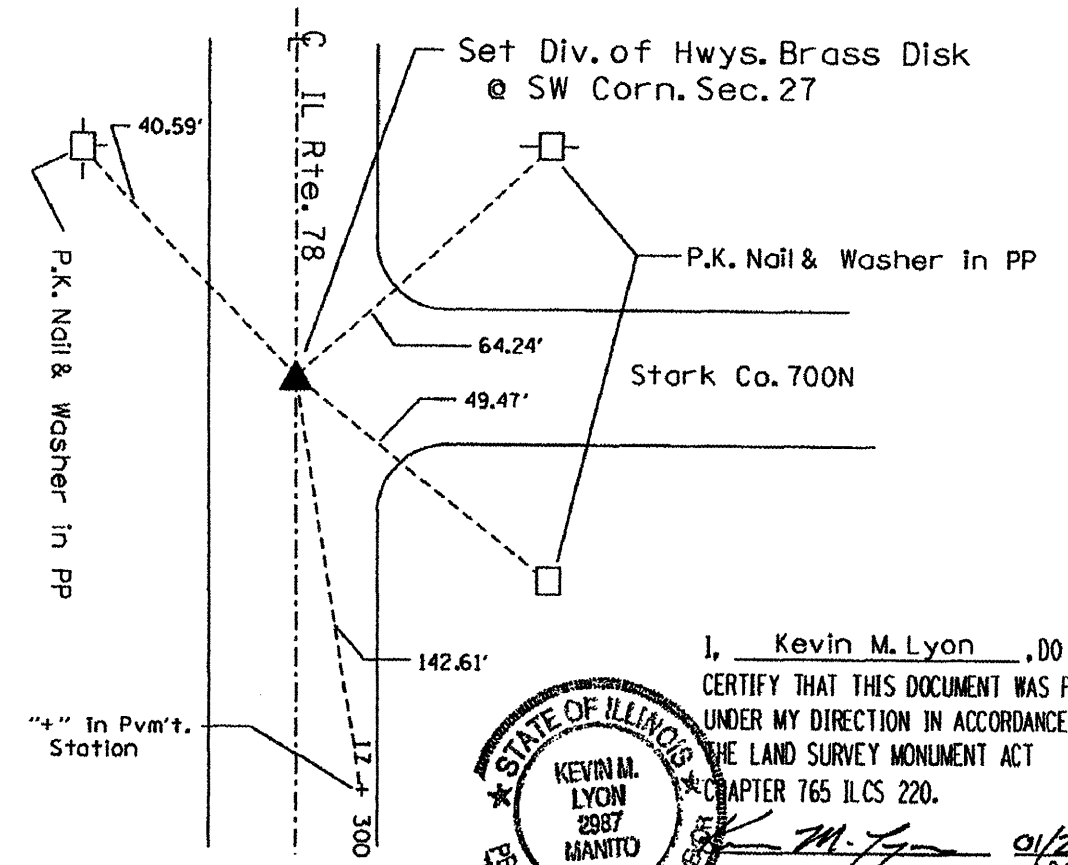
STATE OF ILLINOIS } No. 89482
COUNTY OF STARK } SS.
This instrument was filed for record
in the Recorder's Office to the County
aforesaid on the 4th day of Nov.
A.D. 2004 at 9:25 o'clock A.M
Linda K. Pyell
County Clerk and Recorder
By Valerie J. Wagner
Deputy

SPACE RESERVED FOR RECORDING OFFICER



RECOVERY TIE DRAWING

(SHOW MONUMENT DESCRIPTION, ACCESSORIES, AND KNOWN HISTORY AT EACH RECORD CORNER WITH TIES.)



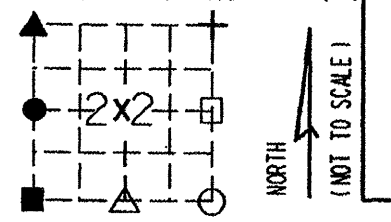
I, Kevin M. Lyon, DO HEREBY
CERTIFY THAT THIS DOCUMENT WAS PREPARED
UNDER MY DIRECTION IN ACCORDANCE WITH
THE LAND SURVEY MONUMENT ACT
CHAPTER 765 ILCS 220.
Kevin M. Lyon 01/23/03
DATE
ILL. P.L.S. NO. 035-02987

" MONUMENT RECORD "

LAND SURVEY MONUMENTS SITUATED IN
SECTION 22 TWP. 13N
RANGE 5E, of the 4th P.M.,
STARK COUNTY, IL.

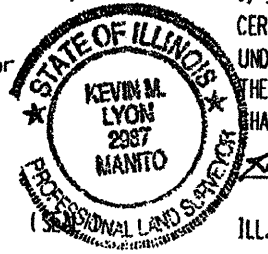
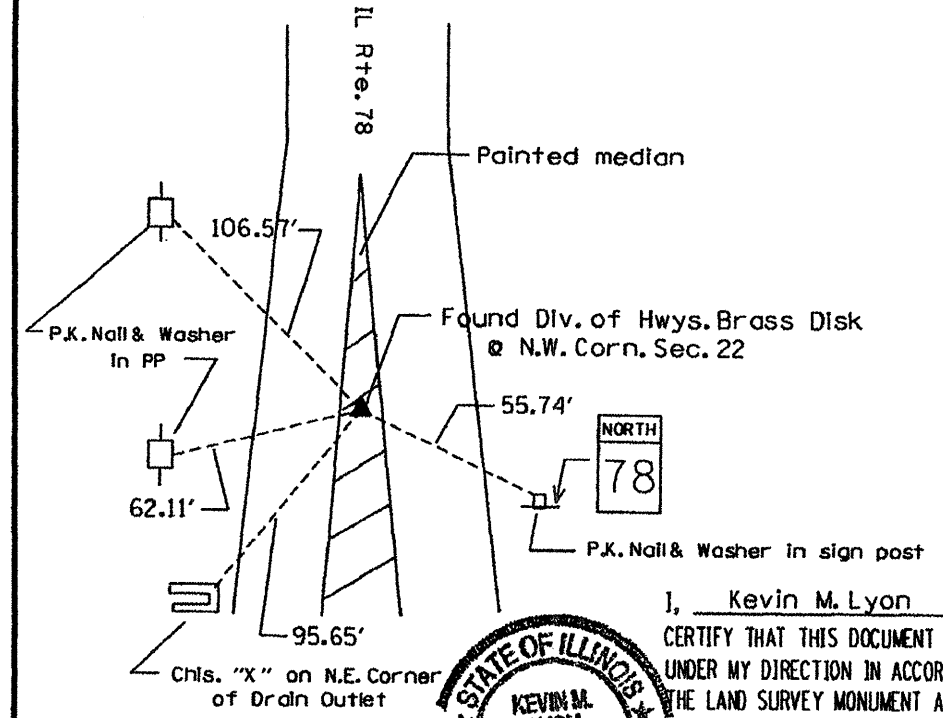
STATE OF ILLINOIS } No. 89481
COUNTY OF STARK } SS.
This instrument was filed for record
in the Recorder's Office to the County
aforesaid on the 4th day of Nov.
A.D. 2004 at 9:20 o'clock A.M
Linda K. Pyell
County Clerk and Recorder
By Valerie J. Wagner
Deputy

SPACE RESERVED FOR RECORDING OFFICER



RECOVERY TIE DRAWING

(SHOW MONUMENT DESCRIPTION, ACCESSORIES, AND KNOWN HISTORY AT EACH RECORD CORNER WITH TIES.)
Note: All distances are horizontal



I, Kevin M. Lyon, DO HEREBY
CERTIFY THAT THIS DOCUMENT WAS PREPARED
UNDER MY DIRECTION IN ACCORDANCE WITH
THE LAND SURVEY MONUMENT ACT
CHAPTER 765 ILCS 220.
Kevin M. Lyon 01/23/03
DATE
ILL. P.L.S. NO. 035-02987

FILE NAME = 0468499-plan.dave.dgn	USER NAME = everscl	DESIGNED - -----	REVISED - -----
		DRAWN - -----	REVISED - -----
		CHECKED - -----	REVISED - -----
		DATE - -----	REVISED - -----

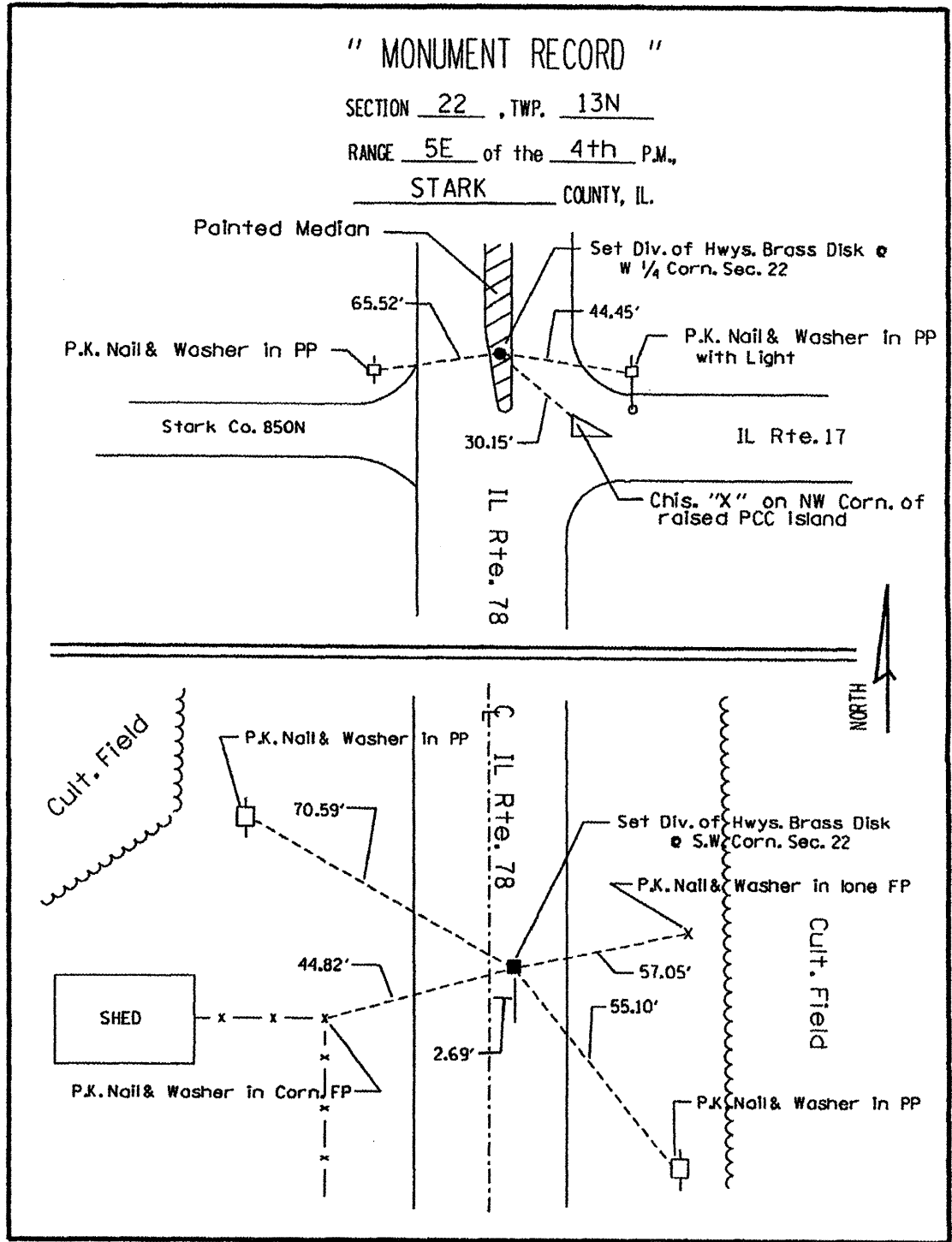
PLOT SCALE = 100.0000' / IN.	CHECKED - -----	REVISED - -----
PLOT DATE = 3/26/2009	DATE - -----	REVISED - -----

STATE OF ILLINOIS
DEPARTMENT OF TRANSPORTATION

SCALE: -----	SHEET NO. -- OF -- SHEETS	STA. ----- TO STA. -----
--------------	---------------------------	--------------------------

F.A.P. RTE.	SECTION	COUNTY	TOTAL SHEETS	SHEET NO.
22	(14,128)RS-3(129RS-3	STARK	25	12
CONTRACT NO. 68499				

ILLINOIS FED. AID PROJECT



"MONUMENT RECORD"

OF
 LAND SURVEY MONUMENTS
 SITUATED IN SECTION 22
 TOWNSHIP 13 NORTH
 RANGE 5 EAST . 4TH P.M.
 STARK COUNTY, IL

STATE OF ILLINOIS } No. 83624
 COUNTY OF STARK } SS.
 This instrument was filed for record
 in the Recorder's Office to the County
 aforesaid on the 2nd day of Oct.
 A.D. 2000 at 3:30 o'clock A.M.
Linda K. Pyell
 County Clerk and Recorder
 By Valerie J. Wagner
 Deputy

This space for Recorder's use only

RECOVERY TIE DRAWING 381D1
 (NOT TO SCALE)

MONUMENT DESCRIPTION AND REMARKS:
 LEGEND
 ▲ 6" DIAMETER CONCRETE MONUMENT WITH 5/8" REBAR SET FLUSH W/ GROUND
 ● SET ALUMINUM I.D.O.T. DISK

ILLINOIS Department of Transportation
 Division of Highways
 ROUTE F.A.S. RTE 392 (IL RTE 17)
 SECTION (132, 133, 133 EXT.) W & RS-2
 JOB NO. C-94-310-94
 SHEET 1 OF 1

STATE OF ILLINOIS
 COUNTY OF KNOX
 I, RONALD I. ZUCK HEREBY
 CERTIFY THAT THIS DOCUMENT WAS PREPARED
 UNDER MY DIRECTION IN ACCORDANCE WITH
 THE PUBLIC ACT 765 ILCS 220 AND THE ABOVE
 DATA IS GIVEN UNDER MY HAND AND SEAL THIS
11TH DAY OF SEPTEMBER, 2000 A.D.
Ronald I. Zuck
 ILLINOIS PROFESSIONAL
 LAND SURVEYOR NO. 2192

FILE NAME = D468499-plan.dwg	USER NAME = everscl	DESIGNED - ---	REVISED - ---	STATE OF ILLINOIS DEPARTMENT OF TRANSPORTATION	RECOVERY TIES	F.A.P. RTE. 22	SECTION (14,128)RS-3;129RS-3	COUNTY STARK	TOTAL SHEETS 25	SHEET NO. 13
PLOT SCALE = 100.0000' / IN.				SCALE: _____ SHEET NO. ___ OF ___ SHEETS STA. _____ TO STA. _____		CONTRACT NO. 68499				
PLOT DATE = 3/26/2009						ILLINOIS FED. AID PROJECT				

7034

"MONUMENT RECORD"
 OF
 LAND SURVEY MONUMENTS
 SITUATED IN SECTION 21
 TOWNSHIP 13 NORTH
 RANGE 5 EAST 4TH P.M.
 STARK COUNTY, IL

STATE OF ILLINOIS No. **83623**
 COUNTY OF STARK) SS.
 This instrument was filed for record
 in the Recorder's Office to the County
 aforesaid on the 2nd day of Oct
 A.D. 2000 at 9:25 o'clock A. M.
Linda K. Pyell
 County Clerk and Recorder
 By Valerie J. Wagner
 Deputy

This space for Recorder's use only

RECOVERY TIE DRAWING 381D1
 (NOT TO SCALE)

MONUMENT DESCRIPTION AND REMARKS:
 LEGEND
 ▲ 6" DIAMETER CONCRETE MONUMENT
 WITH 5/8" REBAR SET FLUSH W/
 GROUND
 ● SET ALUMINUM I.D.O.T. DISK

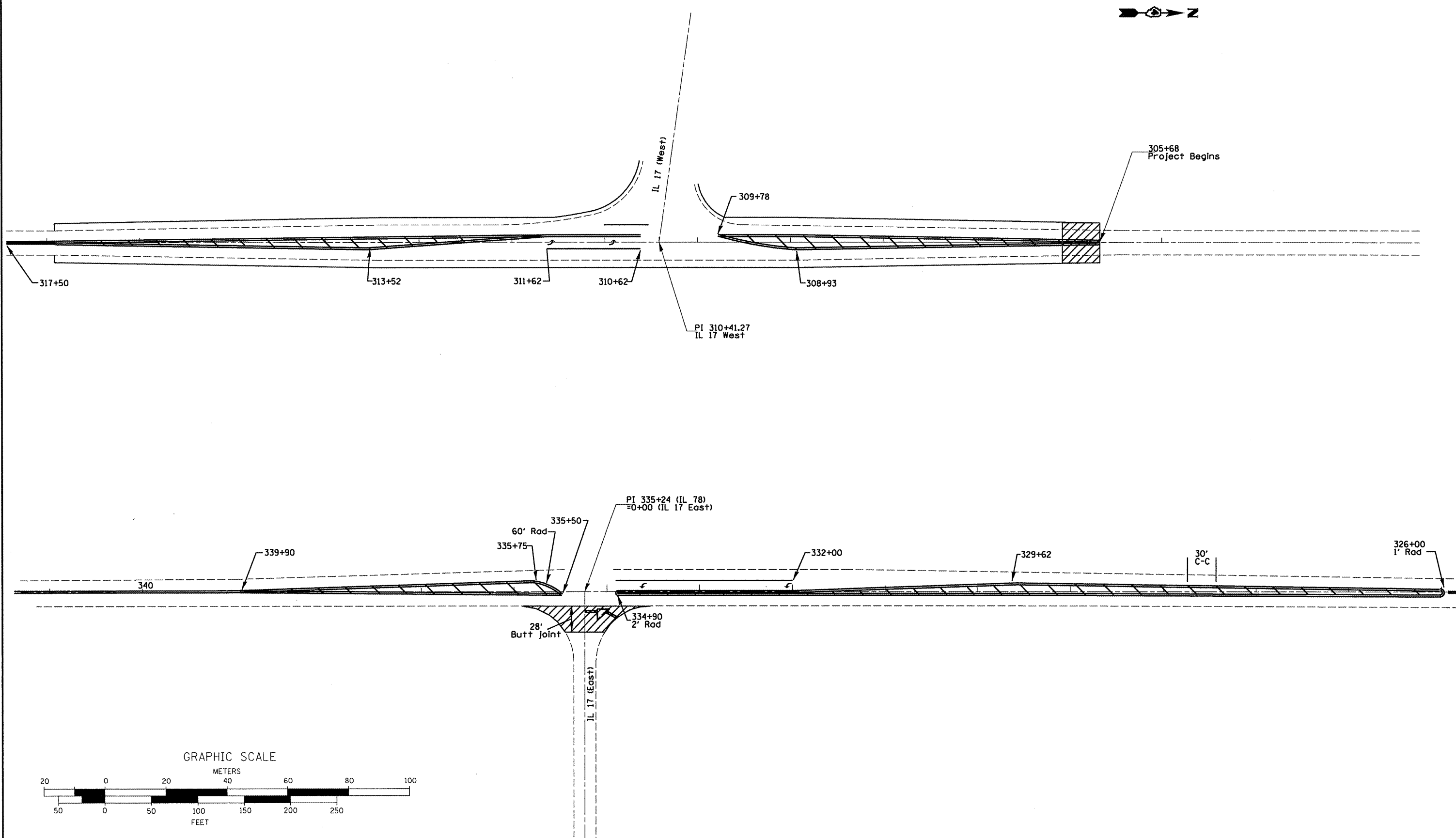
PROFESSIONAL LAND SURVEYOR
 RONALD I. ZUCK
 No. 2192
 GALESBURG, IL
 STATE OF ILLINOIS

PREPARED BY
 BRUNER, COOPER & ZUCK, INC.

Illinois Department
 of Transportation
 Division of Highways
 ROUTE F.A.S. RTE 392 (IL. RTE. 17)
 SECTION (132, 133, 133 EXT.) W & RS-2
 JOB NO. C-94-310-94
 SHEET 1 OF 1

STATE OF ILLINOIS
 COUNTY OF KNOX
 I, RONALD I. ZUCK HEREBY
 CERTIFY THAT THIS DOCUMENT WAS PREPARED
 UNDER MY DIRECTION IN ACCORDANCE WITH
 THE PUBLIC ACT 765 ILCS 220 AND THE ABOVE
 DATA IS GIVEN UNDER MY HAND AND SEAL THIS
11TH DAY OF SEPTEMBER, 2000 A.D.
Ronald I. Zuck
 ILLINOIS PROFESSIONAL
 LAND SURVEYOR NO. 2192

FILE NAME = D468499-plot.dave.dgn	USER NAME = everscl	DESIGNED - ----	REVISED - ----	STATE OF ILLINOIS DEPARTMENT OF TRANSPORTATION	RECOVERY TIES				F.A.P. RTE.	SECTION	COUNTY	TOTAL SHEETS	SHEET NO.
	PLOT SCALE = 100.0000' / IN.	DRAWN - ----	REVISED - ----		SCALE: -----	SHEET NO. -- OF -- SHEETS	STA. ----- TO STA. -----	22	(14,128)RS-3;129RS-3	STARK	25	14	
	PLOT DATE = 3/26/2009	CHECKED - ----	REVISED - ----		CONTRACT NO. 68499								
		DATE - ----	REVISED - ----		ILLINOIS FED. AID PROJECT								



FILE NAME = 0468499-plan_dave.dgn
 USER NAME = eversol
 PLOT SCALE = 100.0000' / IN.
 PLOT DATE = 3/26/2009

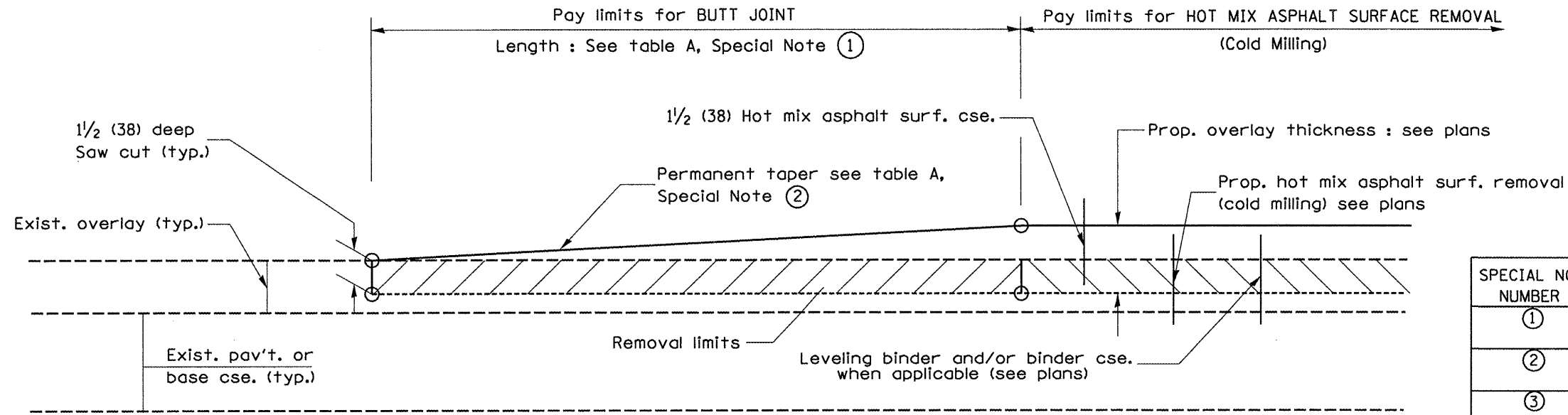
DESIGNED -	REVISD -
DRAWN -	REVISD -
CHECKED -	REVISD -
DATE -	REVISD -

**STATE OF ILLINOIS
 DEPARTMENT OF TRANSPORTATION**

PAVEMENT MARKING DETAILS

SCALE: _____ SHEET NO. ____ OF ____ SHEETS STA. _____ TO STA. _____

F.A.P. RTE.	SECTION	COUNTY	TOTAL SHEETS	SHEET NO.
22	(14,128)RS-3;129RS-3	STARK	25	15
CONTRACT NO. 68499				
ILLINOIS FED. AID PROJECT				



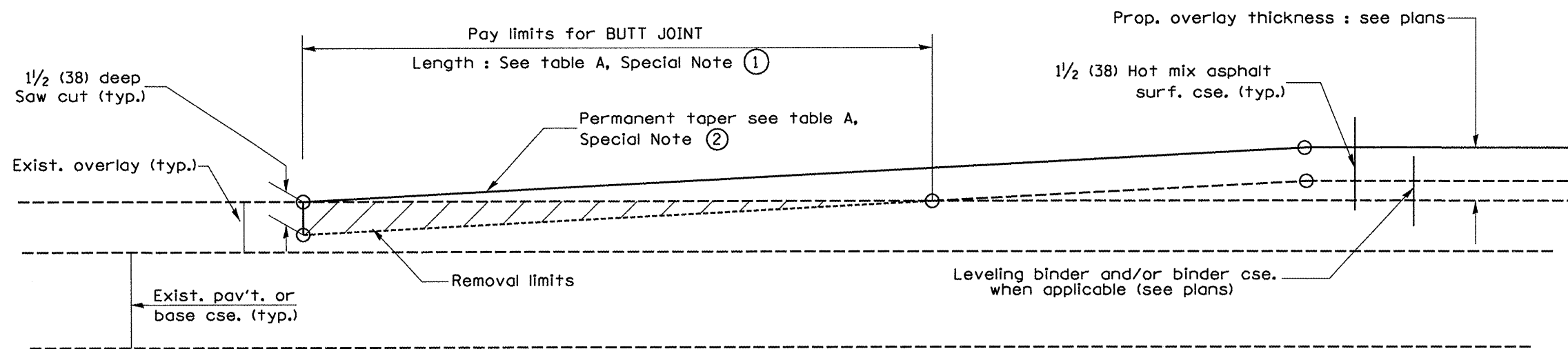
CASE 1 : WITH HOT MIX ASPHALT SURFACE REMOVAL (COLD MILLING)

TABLE A
(LENGTHS AND TAPER RATES)

SPECIAL NOTE NUMBER	ELEMENT	MAINLINE INTERSTATES & 4-LANE EXPRESSWAYS	ALL OTHERS
①	LENGTH OF BUTT JOINT	60'(18.0 m)	30'(9.0 m)
②	PERMANENT TAPER RATE	1:480	1:240
③	TEMPORARY RAMP TAPER RATE	1:80	1:40
④	TEMPORARY RAMP LENGTH	10'(3.0 m)	5'(1.5 m)
⑤	LENGTH OF BUTT JOINT	10'(3.0 m)	10'(3.0 m)

GENERAL NOTES

1. The work shall be done in accordance with Article 406.08 and the Special Provision for Butt Joints.
2. The pavement surface to be removed may be either bituminous or P.C. concrete. The work shall be performed in accordance with Article 440.04 and the Special Provisions for Butt Joints.
3. The saw cut joints shall be primed just prior to the placing of bituminous material. The work will be in accordance with the applicable portions of Article 406.05.



CASE 2 : NO HOT MIX ASPHALT SURFACE REMOVAL (COLD MILLING)

All dimensions are in Inches (millimeters) unless otherwise noted.

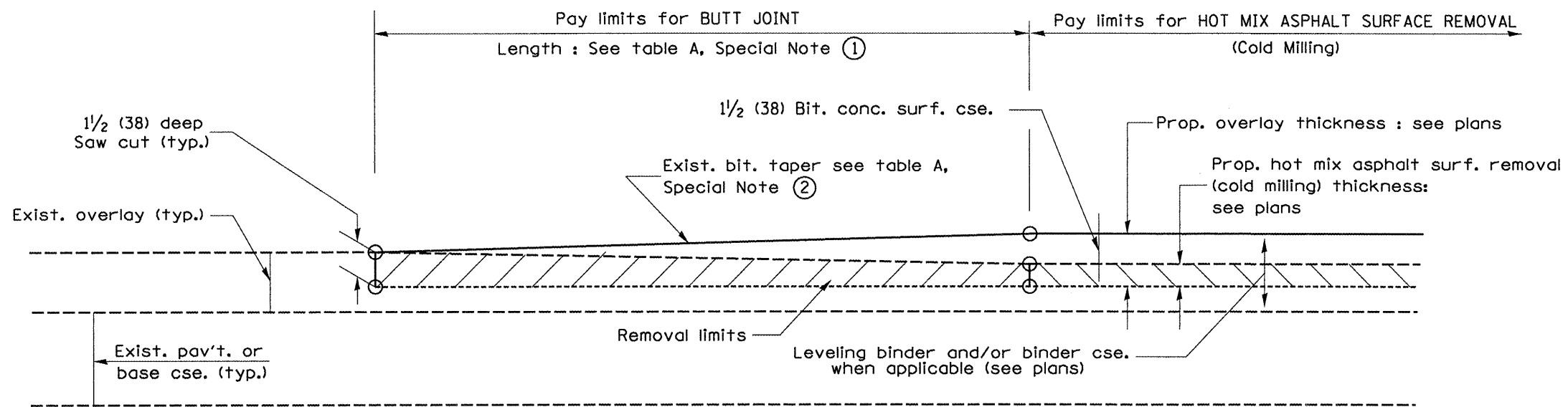
01-01-97	REVISION C-23, 01, NEW REVISION BOX	J.P.
04-01-97	CORRECTION TO DEPTH	J.A.
09-15-05	REVISED DESIGNER NOTE	M.M.A.
10-16-06	REVISED TO 2007 SPEC.	M.A.

STATE OF ILLINOIS
DEPARTMENT OF TRANSPORTATION

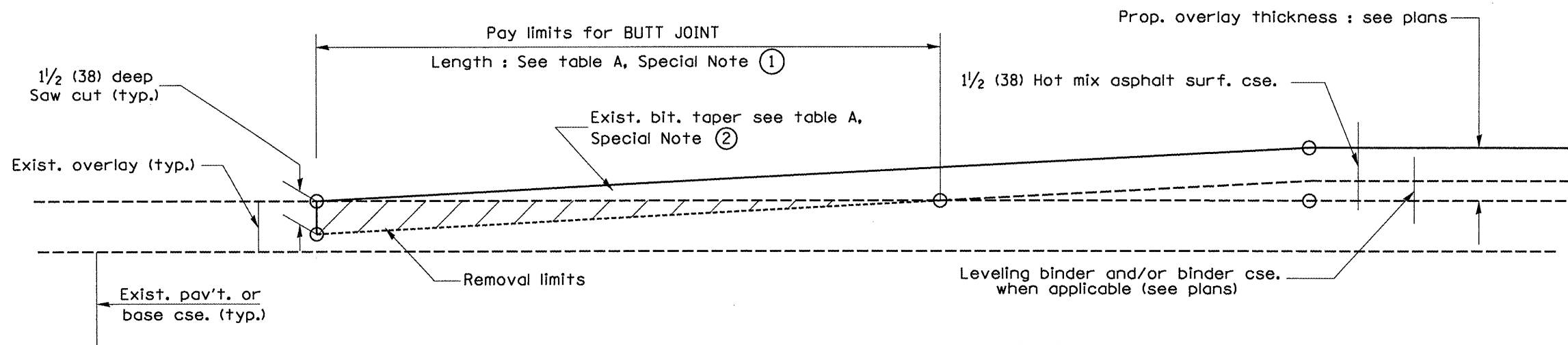
BUTT JOINTS

NOT TO SCALE

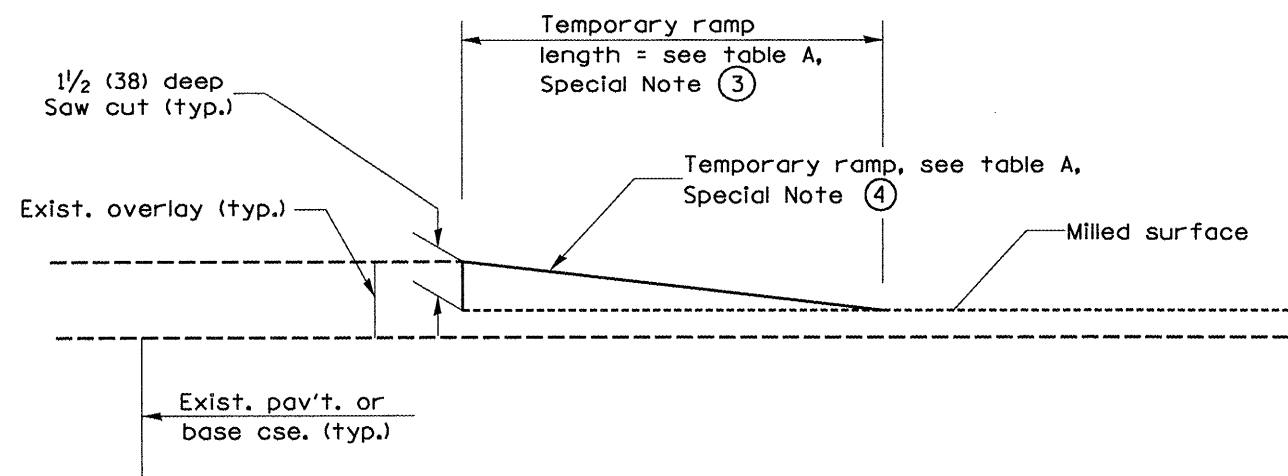
F.A.P. RTE.	SECTION	COUNTY	TOTAL SHEETS	SHEET NO.
22	(14,128)RS-3(129)RS-3	STARK	25	16
SHI-1-0E-3			CONTRACT NO. 68499	
FED. ROAD DIST. NO. ILLINOIS FED. AID PROJECT				



**CASE 3 : WITH HOT MIX ASPHALT SURFACE REMOVAL (COLD MILLING)
TIE-IN TO EXISTING BITUMINOUS TAPER**



**CASE 4 : NO HOT MIX ASPHALT SURFACE REMOVAL (COLD MILLING)
TIE-IN TO EXISTING BITUMINOUS TAPER**



DETAIL TEMPORARY RAMP

All dimensions are in inches (millimeters) unless otherwise noted.

STATE OF ILLINOIS
DEPARTMENT OF TRANSPORTATION

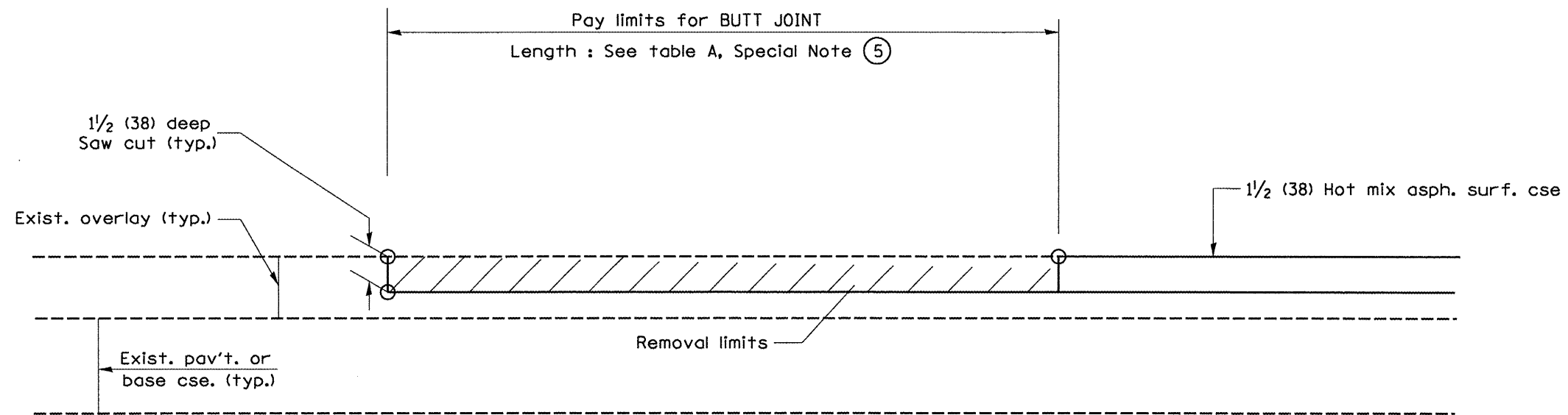
BUTT JOINTS

NOT TO SCALE

F.A.P. RTE.	SECTION	COUNTY	TOTAL SHEETS	SHEET NO.
22	(14,128)RS-3;129RS-3	STARK	25	17
CONTRACT NO. 68499				

SHI-2-QE-3
CADD SIG. 406101-04

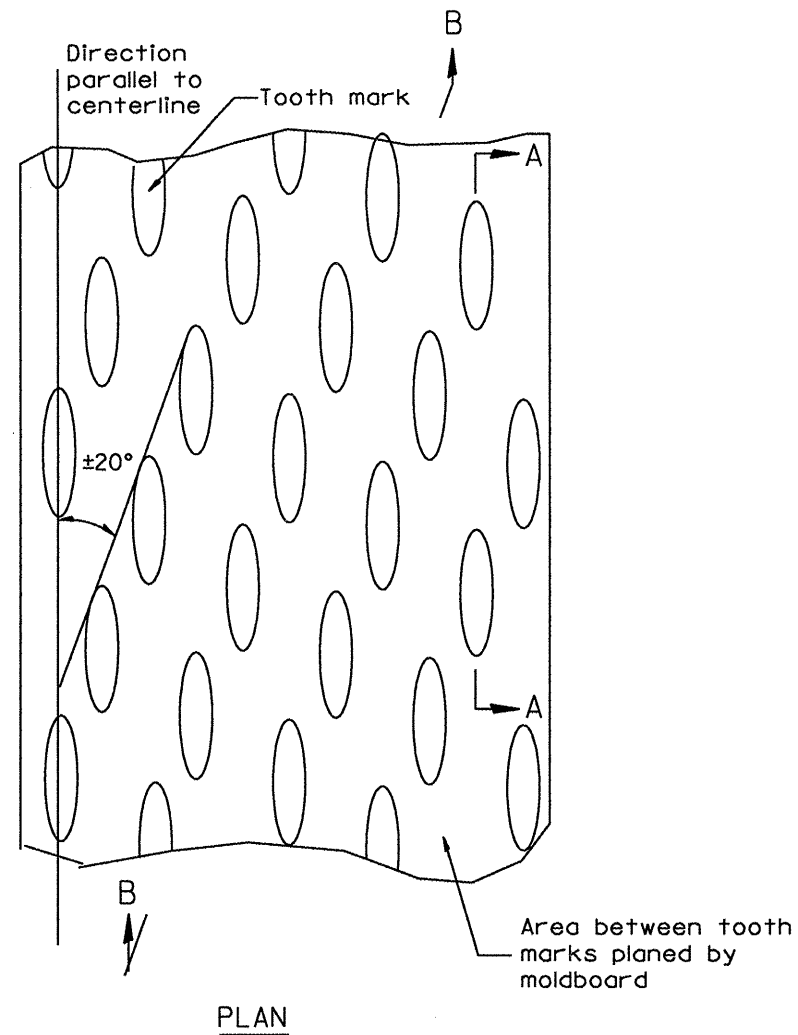
FED. ROAD DIST. NO. ILLINOIS FED. AID PROJECT



**CASE 5 : WITH HOT MIX ASPHALT SURFACE REMOVAL (COLD MILLING)
TIE-IN TO EXISTING BITUMINOUS TAPER**

All dimensions are in inches (millimeters) unless otherwise noted.

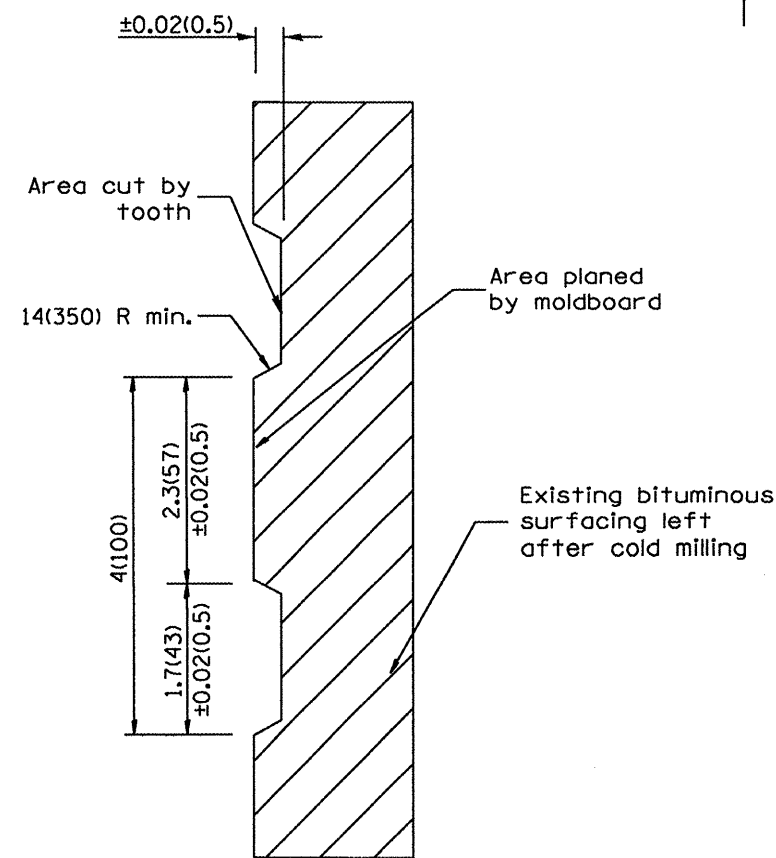
				STATE OF ILLINOIS DEPARTMENT OF TRANSPORTATION		BUTT JOINTS		F.A.P. SECTION COUNTY TOTAL SHEETS SHEET NO. 22 (14,128/RS-3;129RS-3 STARK 25 18	
				NOT TO SCALE		SHI_3_0E_3 CA00_S10_406101:04		CONTRACT NO. 68499	
								FED. ROAD DIST. NO. - ILLINOIS FED. AID PROJECT	



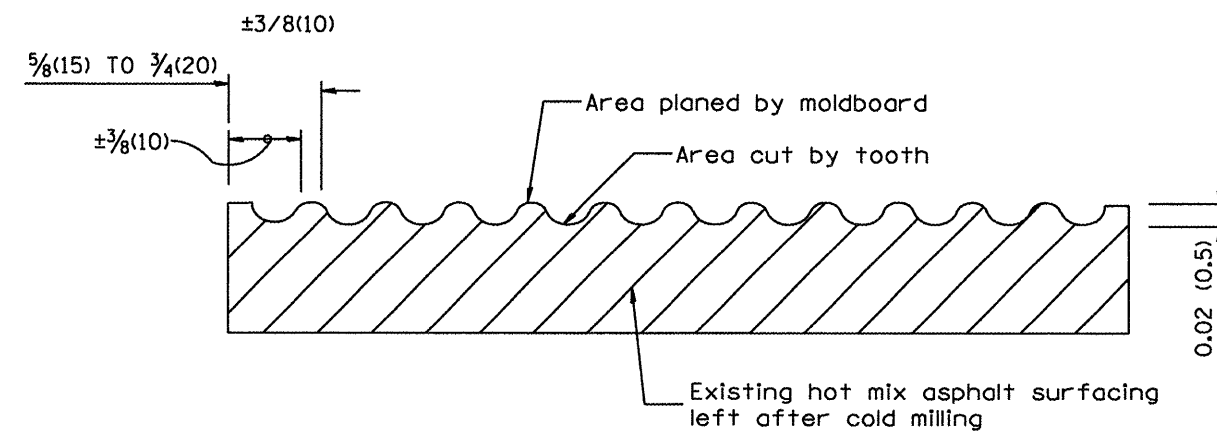
PLAN

General notes:

1. Coldmilling shall consist of two processes: Cutting with carbide teeth mounted on a rotating drum, and planing with a moldboard mounted immediately behind the cutting drum.
2. Other similar patterns will be acceptable if they consist of a smooth, flat, planed surface interspersed with a pattern of discontinuous longitudinal striations.



SECTION A-A



SECTION B-B PROJECTED
PERPENDICULAR TO CENTERLINE

All dimensions are in inches (millimeters) unless otherwise noted.

01-01-97	BENUM..C:104.01..NEW_REVISION_BOX	I.P.
04-20-98	REMOVED MILLING DETAIL FROM STANDARD	J.A.
09-08-98	CORRECT NOIE LEADER PLACEMENT	B.W.
10-16-06	REVISED TO 2007 SPEC.	M.A.

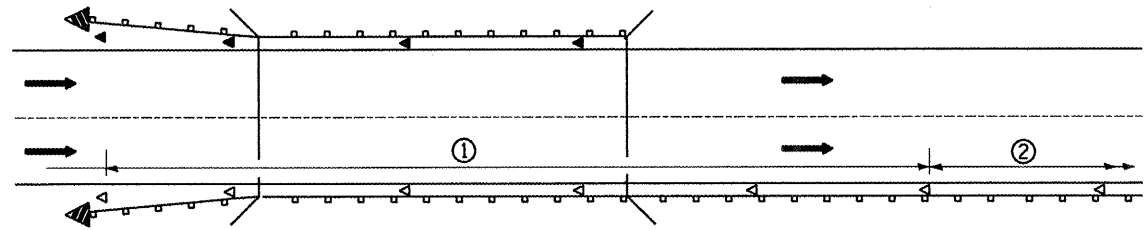
STATE OF ILLINOIS
DEPARTMENT OF TRANSPORTATION

HOT MIX ASPHALT SURFACE REMOVAL (COLD MILLING)

NOT TO SCALE

CADD_SID_440001-04

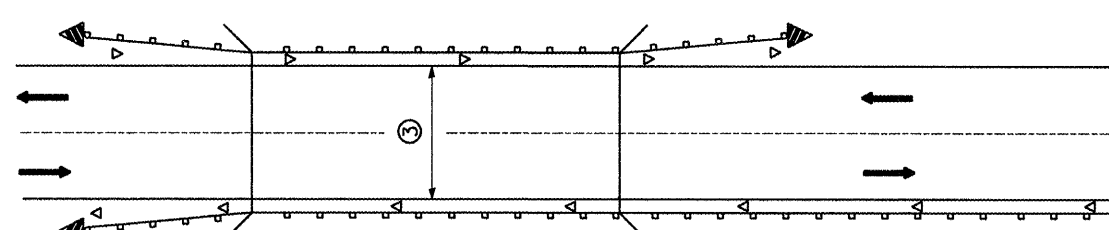
F.A.P. RTE.	SECTION	COUNTY	TOTAL SHEETS	SHEET NO.
22	(14,128)RS-3;129RS-3	STARK	25	19
CONTRACT NO. 68499				
FED. ROAD DIST. NO. ILLINOIS FED. AID PROJECT				



① Spacing 80 ft. (24 m) max. for first 400 ft. (122 m) or curve spacing shown in Standard 635001, whichever is less (min. 4 reflectors regardless of length).

② After 400 ft. (122 m), transition to normal delineator spacing shown in Standard 635001, and continue as required.

ONE-WAY TRAFFIC



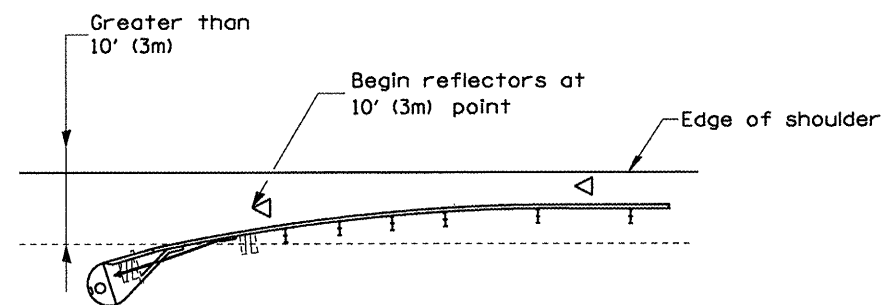
③ Bidirectional silver/silver should be used in lieu of monodirectional silver on both sides of two-lane bridges where the bridge pavement is less than 24 (610) wider than the pavement approaching the bridge.

TWO-WAY TRAFFIC

GUARDRAIL / BARRIER WALL / BRIDGE RAIL REFLECTORS

LEGEND

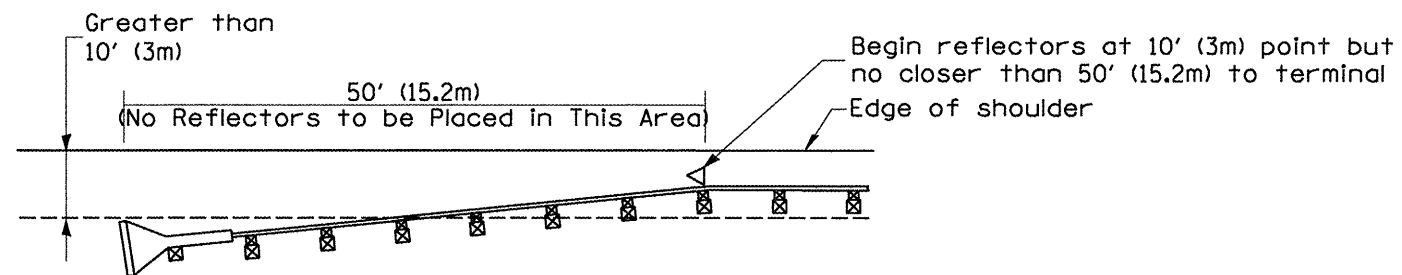
- ◁ Monodirectional silver
- ◄ Monodirectional amber
- ◄ Terminal Marker - Black/Yellow
Left or Right as appropriate



NOTE: Omit terminal marker when terminal over 10' (3m) from edge of paved shoulder or break point of unpaved shoulder, or when terminal buried in backslope.

Traffic Barrier Terminal Type(*) and/or Turned-Down Terminal

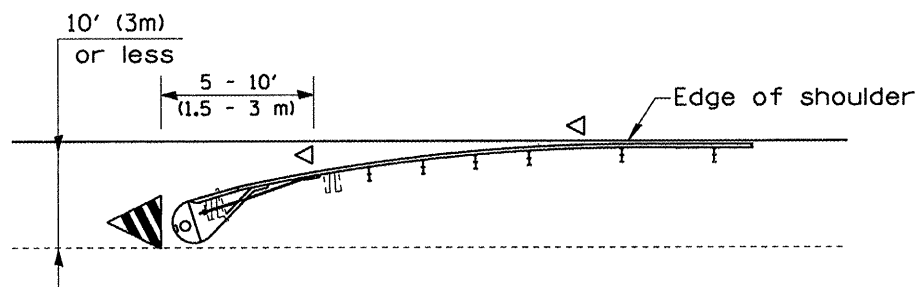
[Terminal over 10' (3m) from edge of shoulder]
•See Plans for Type



NOTE: Omit terminal marker when terminal over 10' (3m) from edge of paved shoulder or break point of unpaved shoulder.

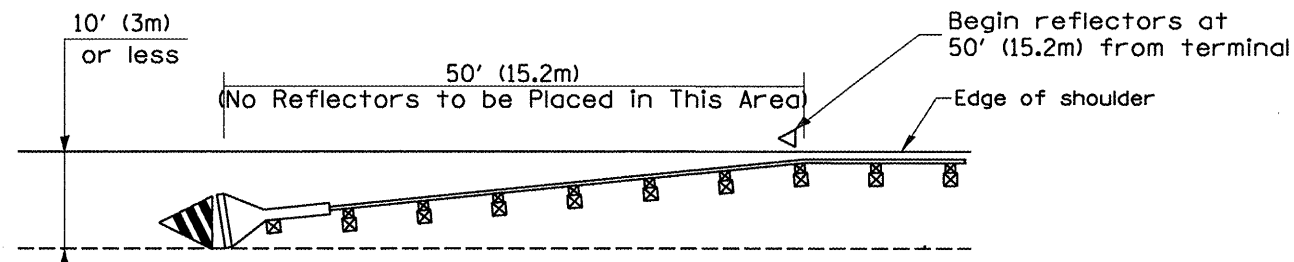
Traffic Barrier Terminal Type 1 (Special)

[Terminal over 10' (3m) from edge of shoulder]



Traffic Barrier Terminal Type(*) and/or Turned-Down Terminal

[Terminal over 10' (3m) or less from edge of shoulder]
•See Plans for Type



Traffic Barrier Terminal Type 1 (Special)

[Terminal 10' (3m) or less from edge of shoulder]

TERMINAL MARKER PLACEMENT

All dimensions are in inches (millimeters) unless otherwise noted.

Q1-Q1-97	BENUM. E-10.02. NEW REVISION BOX	-I.P.		
Q3-Q1-97	CORRECT STD. SPEC.	-I.P.		
10-16-06	REVISED TO 2007 SPEC.	-M.A.		

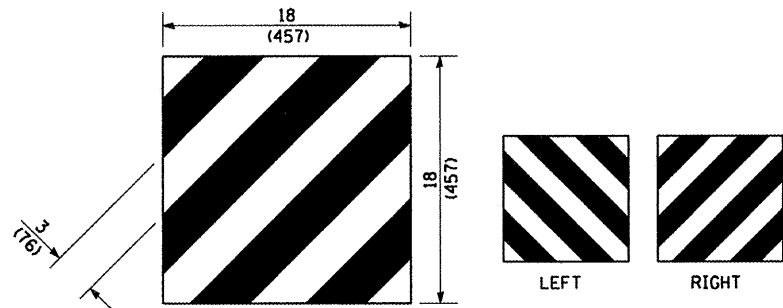
STATE OF ILLINOIS
DEPARTMENT OF TRANSPORTATION

GUARDRAIL AND BARRIER WALL DELINEATION

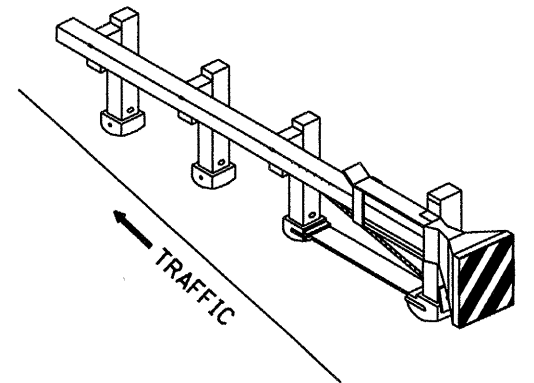
NOT TO SCALE

F.A.P. RTE.	SECTION	COUNTY	TOTAL SHEETS	SHEET NO.
22	(14,128)RS-3;129RS-3	STARK	25	20
CONTRACT NO. 68499				
FED. ROAD DIST. NO. ILLINOIS FED. AID PROJECT				

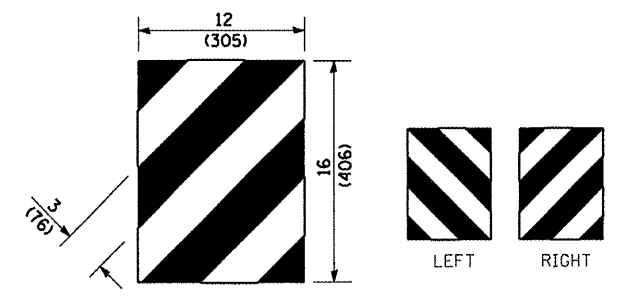
SHI. 1 OF 3
CADD SIG. 635101-04



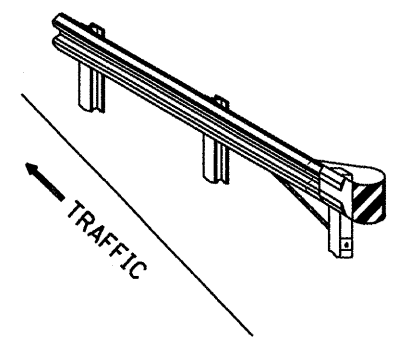
For Traffic Barrier Terminal Type 1 (Special)



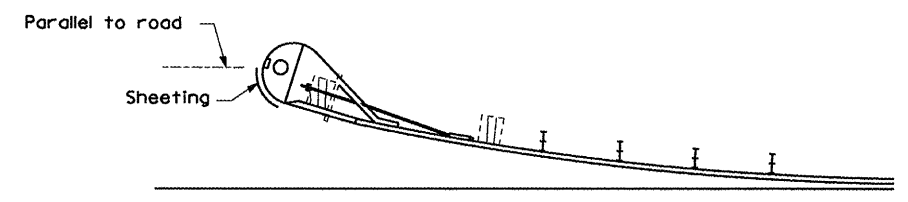
Standard Treatment - Direct Applied Sheeting
Traffic Barrier Terminal Type 1 (Special)



For Traffic Barrier Terminal Type (*)
and Post Mount
• See Plans for Type



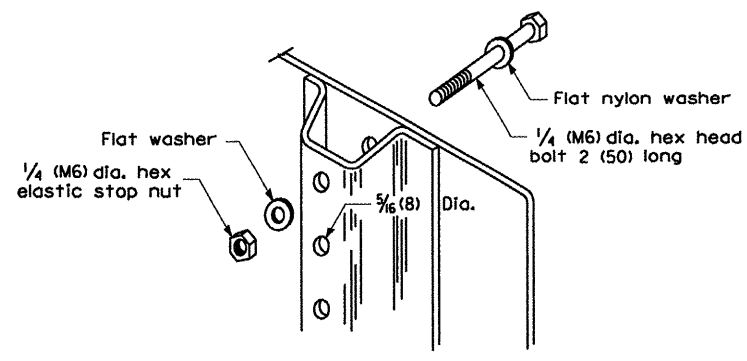
Standard Treatment - Direct Applied Sheeting
Traffic Barrier Terminal Type (*)
• See Plans for Type



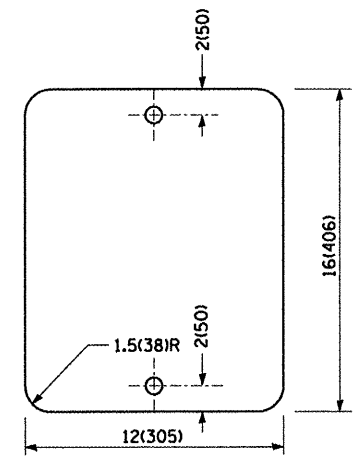
Sheeting Position for
Traffic Barrier Terminal Type (*)
• See Plans for Type

TERMINAL MARKER DETAILS

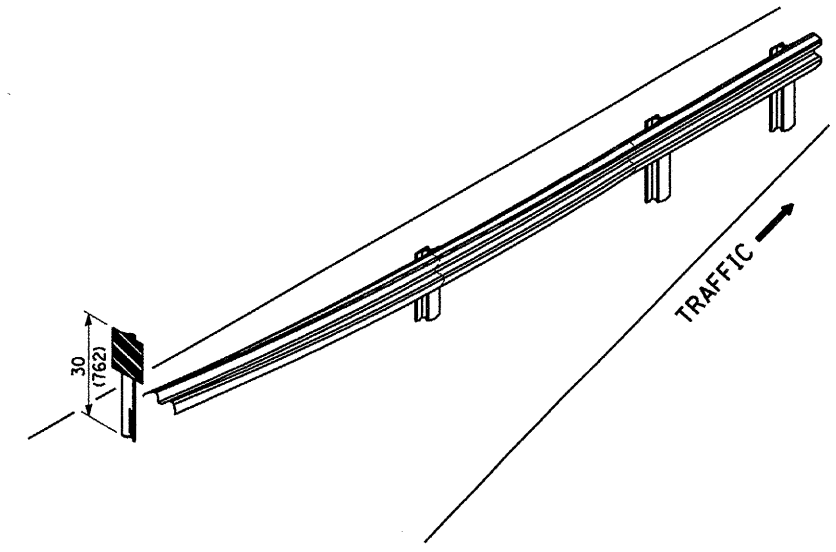
- Color: Black / Yellow reflectorized
- OM - I100 (L or R) Direct applied reflective sheeting
- OM - I200 (L or R) Post mounted



DETAIL OF MOUNTING TERMINAL MARKER TO POST



STANDARD TERMINAL MARKER



ALTERNATE TREATMENT - POST MOUNTED
(For turned-down terminal where sheeting cannot be direct applied)

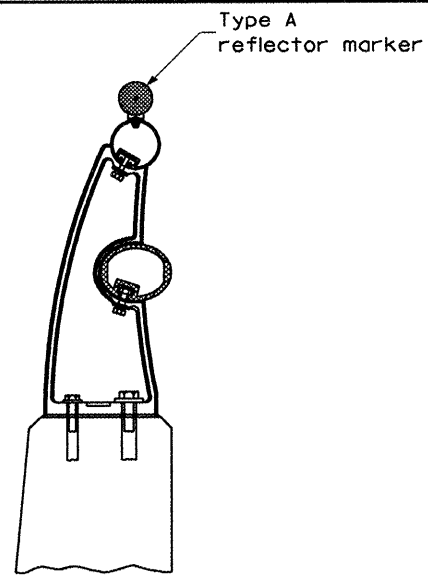
TERMINAL MARKER TREATMENTS

GENERAL NOTES

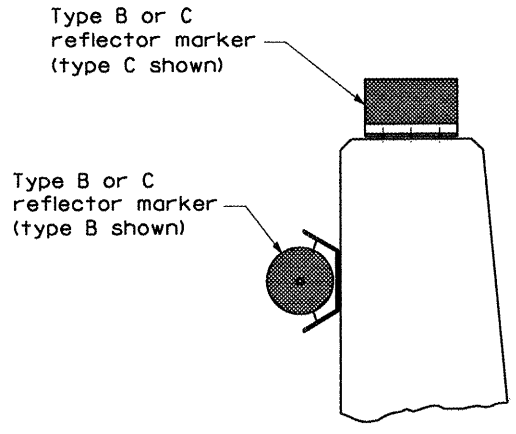
All dimensions are in inches (millimeters) unless otherwise noted.

POST MOUNTED TERMINAL MARKER ASSEMBLY

STATE OF ILLINOIS DEPARTMENT OF TRANSPORTATION				GUARDRAIL AND BARRIER WALL DELINEATION				F.A.P. RTE. 22		SECTION (14,128)RS-3;129RS-3		COUNTY STARK		TOTAL SHEETS 25		SHEET NO. 21	
NOT TO SCALE								SHEET 2 OF 3 CAQD_SIO_635101-03		CONTRACT NO. 68499		FED. ROAD DIST. NO. ILLINOIS FED. AID PROJECT					

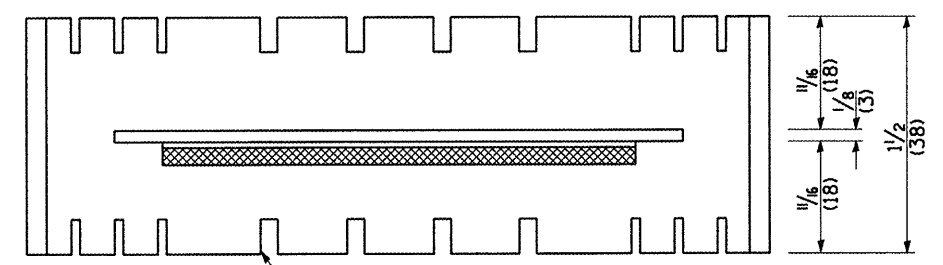


TYPICAL MOUNTING DETAIL FOR BRIDGE RAIL REFLECTOR

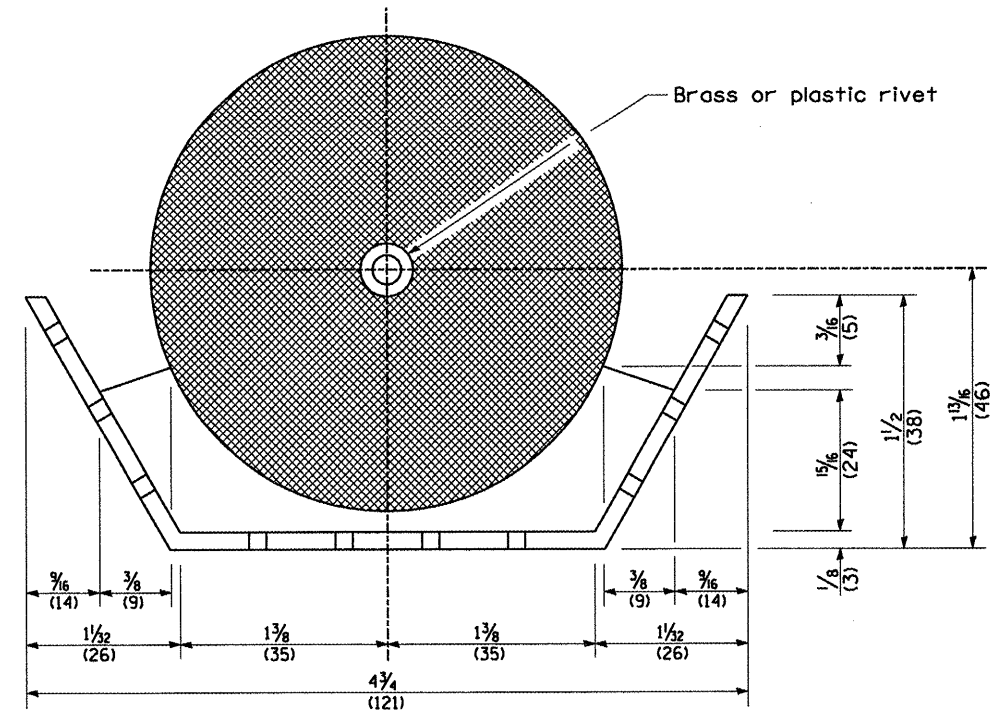


TYPICAL MOUNTING DETAIL FOR BARRIER WALL REFLECTOR

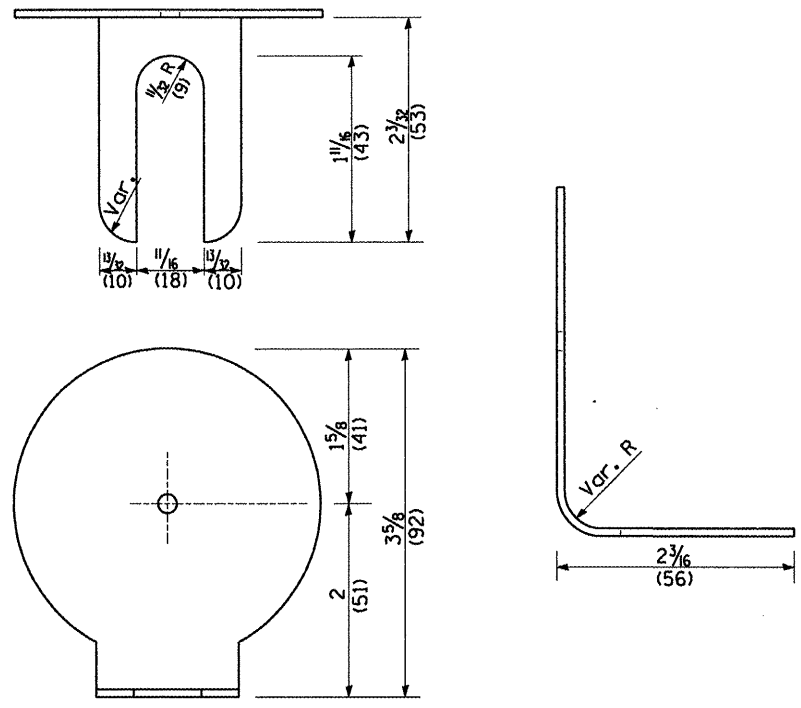
REFLECTOR MOUNTING



Adhesive weep slots or holes equally spaced on both sides

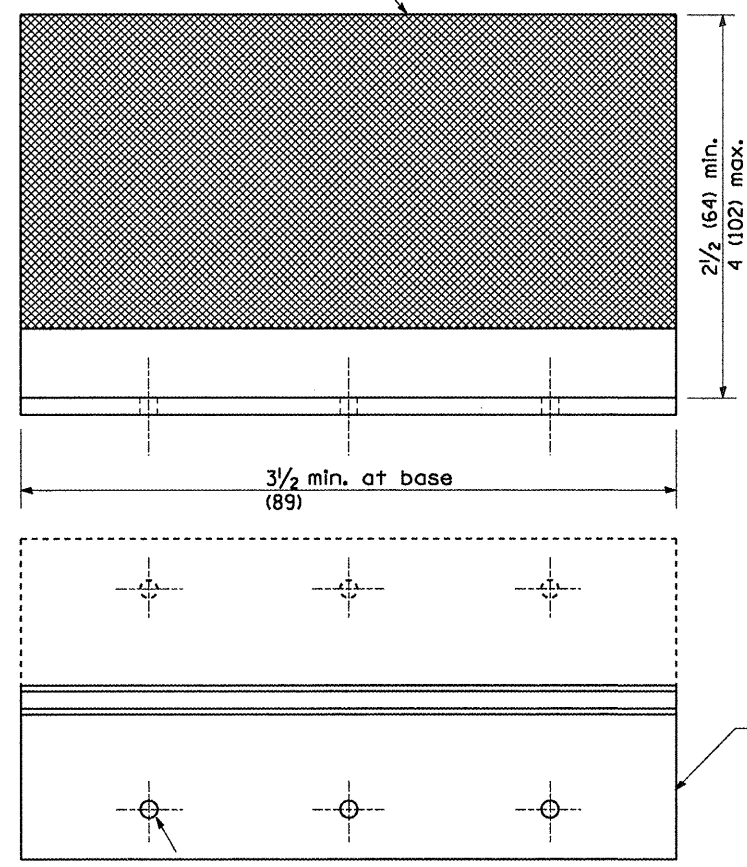


REFLECTOR MARKER TYPE B



REFLECTOR MARKER TYPE A

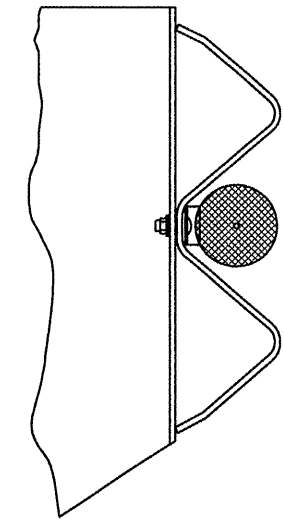
Min. reflective area 6 1/2 sq. in. (4,194 mm²) each side. May be rectangular or slight trapezoid.



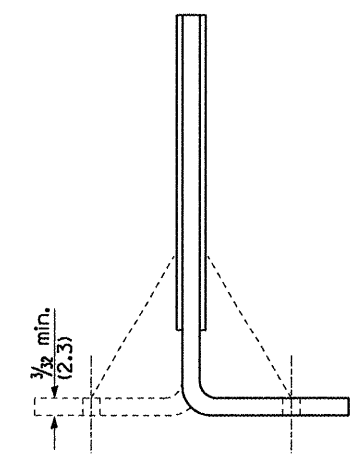
REFLECTOR MARKER TYPE C

3 min. adhesive weep holes or slots each side, variable spacing.

Minimum total area of base 7.0 Sq. in. (4,516 mm²)



TYPICAL GUARDRAIL MOUNTING WITH REFLECTOR MARKER TYPE A



Cross section may be "T" or "L" shaped and may have side supports at ends.

REFLECTORS

All dimensions are in inches (millimeters) unless otherwise noted.

STATE OF ILLINOIS
DEPARTMENT OF TRANSPORTATION

GUARDRAIL AND BARRIER WALL DELINEATION

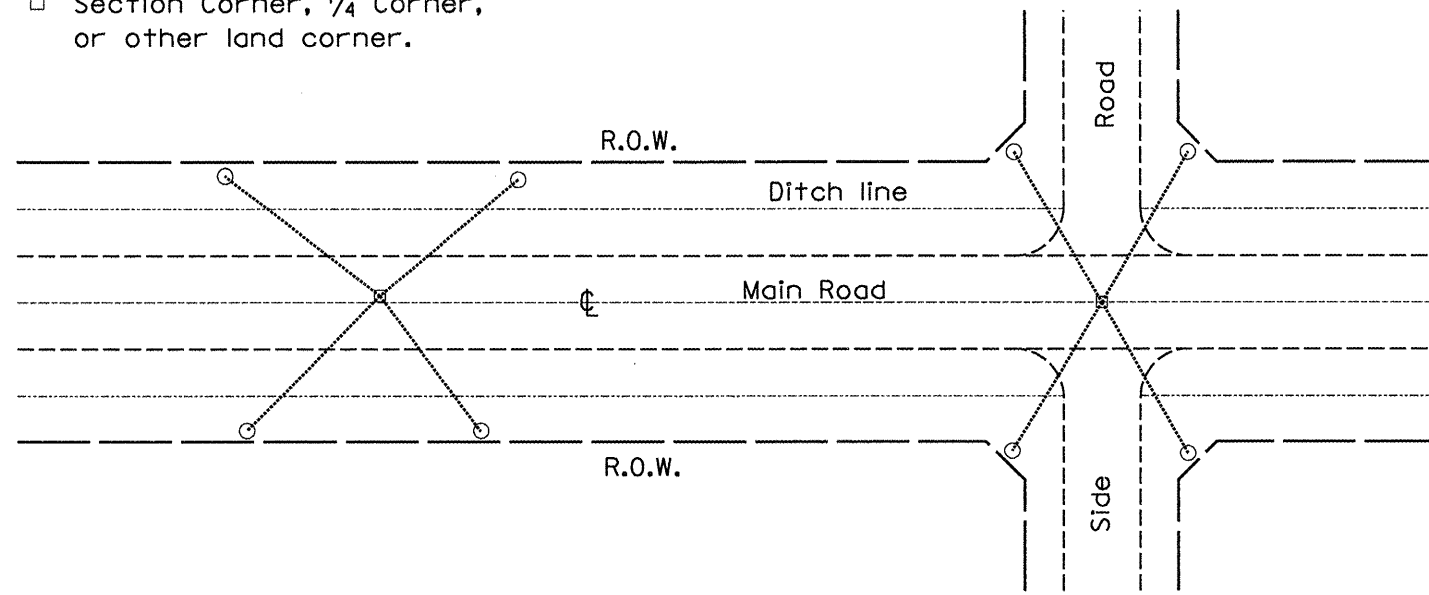
NOT TO SCALE

F.A.P. RTE.	SECTION	COUNTY	TOTAL SHEETS	SHEET NO.
22	(14,128)RS-3(129RS-3	STARK	25	22
CONTRACT NO. 68499			FED. ROAD DIST. NO. - ILLINOIS FED. AID PROJECT	

SU1_3_QE_3
CA00_S10_635101-04

PERMANENT SURVEY TIES

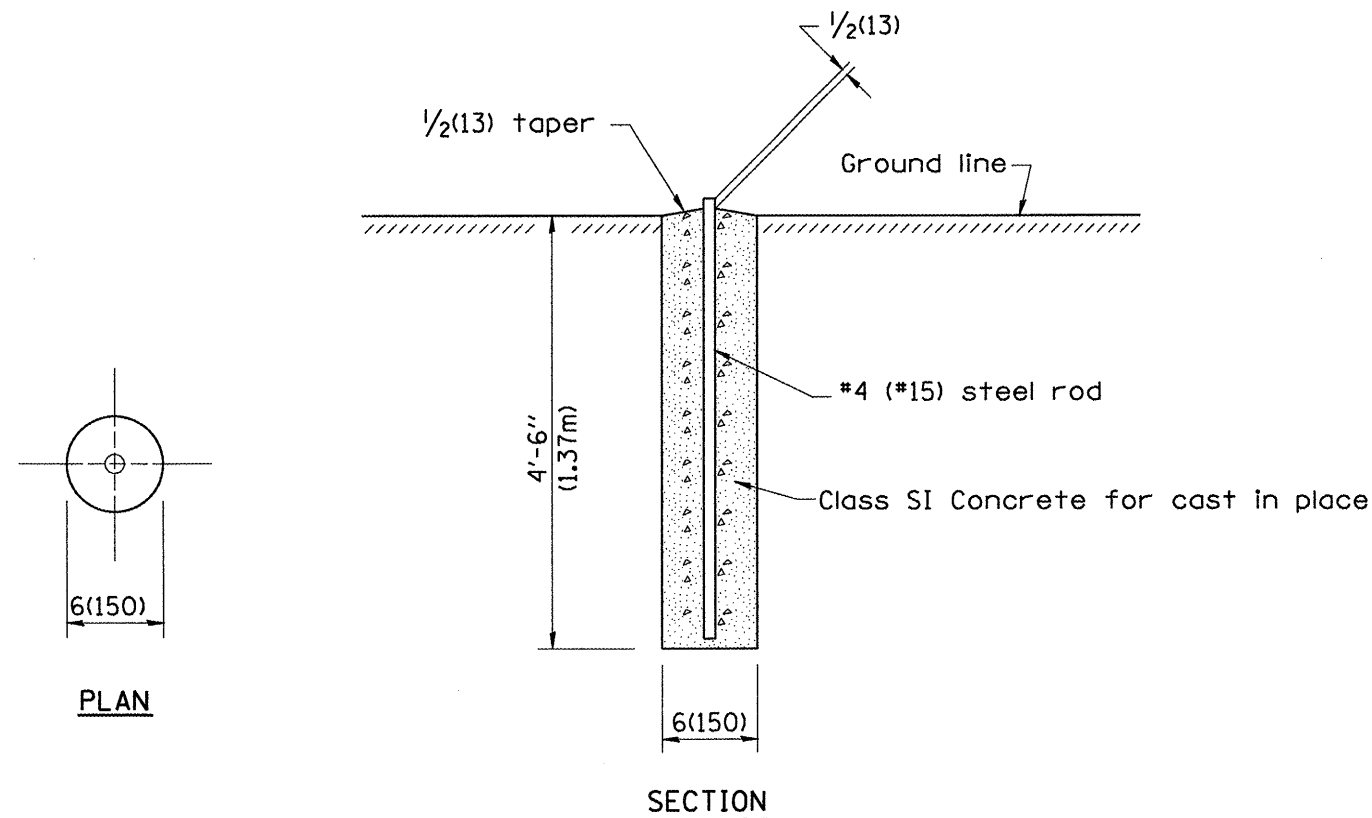
- Permanent Survey Tie
- Section Corner, 1/4 Corner, or other land corner.



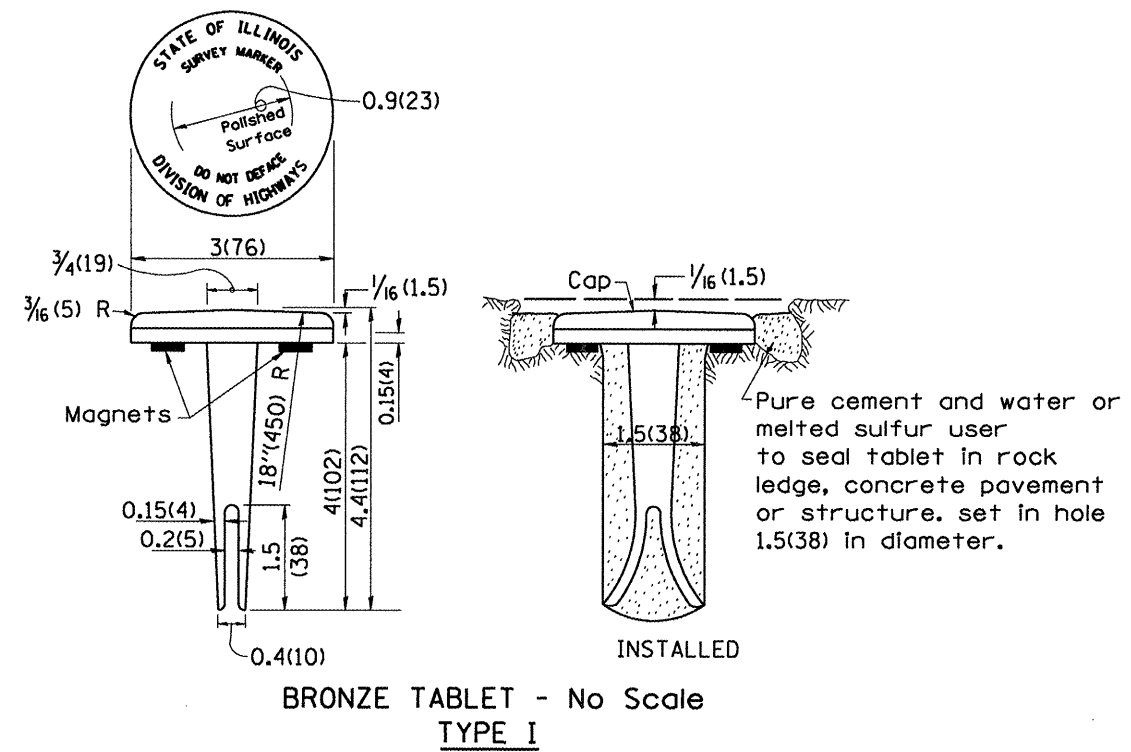
TYPICAL APPLICATION

GENERAL NOTES

1. The marker shall be cast in place of Class SI Concrete.
2. Tie marker shall be installed after the final seeding has been completed unless otherwise specified by the Engineer.
3. The tie distances to the section corner shall be measured and recorded by the IDOT Chief of Surveys.

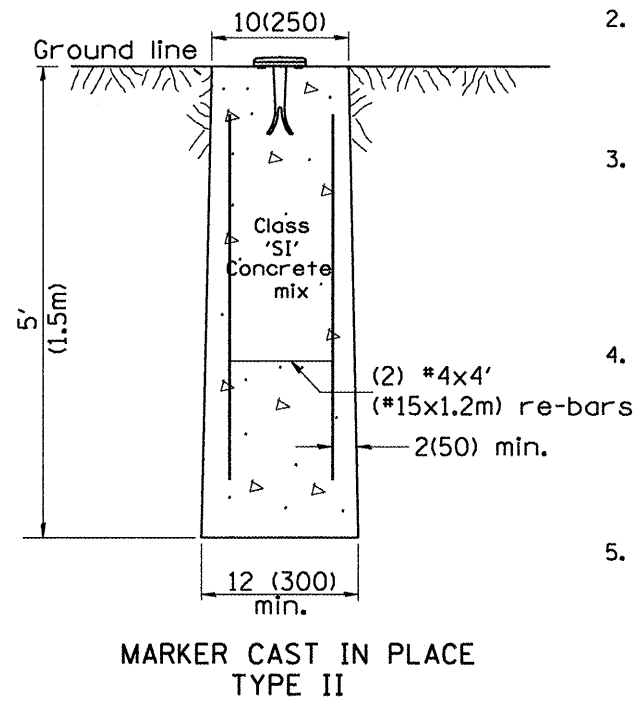


PERMANENT SURVEY MARKERS



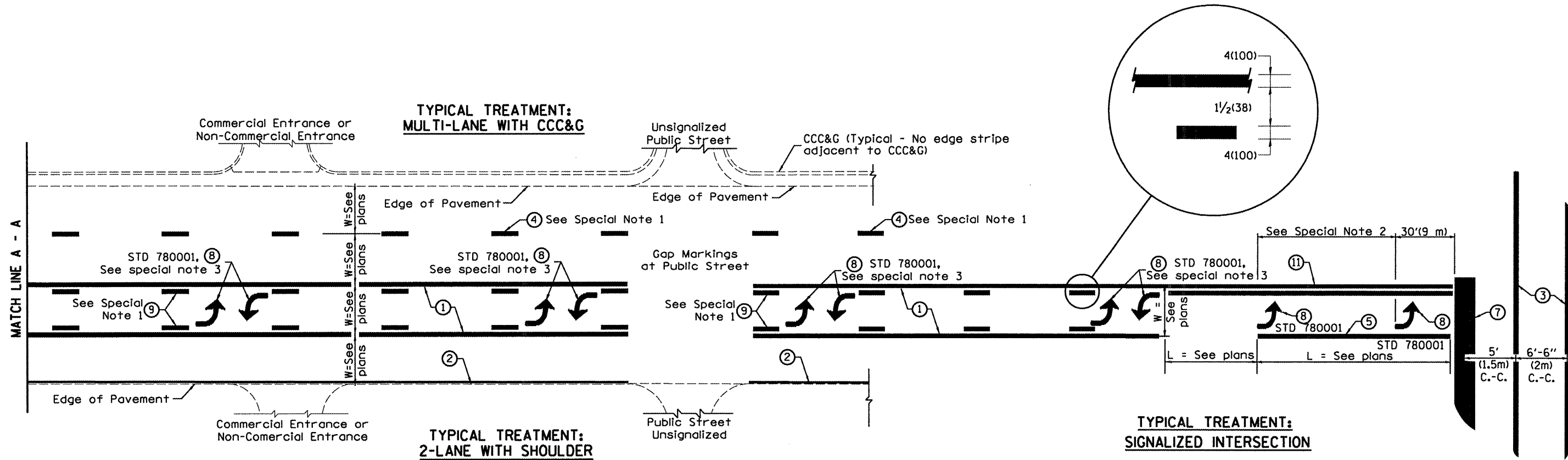
GENERAL NOTES

1. All type II markers shall be cast in place, and precast markers will not be allowed.
2. Two permanent magnets, each having a diameter of 3/4 (19) and a thickness of 1/4 (6), or equivalent, shall be attached to the underside of the tablet with an approved epoxy bonding agent.
3. The location of the markers shall be in accordance with the plans in general, the markers will be placed at the P.T.'s and P.C.'s of horizontal curves and spaces along the tangents in a way that a minimum of two markers are always inter-visible, and not to exceed 1000' (300m).
4. The markers shall be placed under the direction of the Engineer and shall be installed in a workmanlike manner in order that there will be no further settlement or horizontal shifting. The monuments shall be placed in a way that the survey point will fall within the portion of the plaque provided for that purpose.
5. The project designation, the centerline station, the survey point, and the elevation shall be permanently marked by the use of metal dies after marker has been installed.



All dimensions are in inches (millimeters) unless otherwise noted.

01-01-97	RENUM. 0-3.01. NEW REVISION BOX. REVISED	-I.P.-	10-16-06	REVISED TO 2007 SPEC.	-M.A.-	STATE OF ILLINOIS DEPARTMENT OF TRANSPORTATION	PERMANENT SURVEY TIE & PERMANENT SURVEY MARKERS TY.I - TY.II	F.A.P. RTE.	SECTION	COUNTY	TOTAL SHEETS	SHEET NO.	
07-07-98	ADD DESIGNER NOTE	-J.A.-						22	(14,128)RS-3;129RS-3	STARK	25	23	
05-24-06	REMOVED GEN. NOTE UNDER TIES	-M.A.-											CONTRACT NO. 68499
								NOT TO SCALE	CADD. SIO. 667101:04		FED. ROAD DIST. NO. - [ILLINOIS] FED. AID PROJECT		



**FLUSH PAVED MEDIAN: TWO-WAY LEFT TURN LANE
WITH ONE-WAY LEFT TURN LANE AT SIGNALIZED INTERSECTION**

TYPICAL PAVEMENT MARKING LEGEND

(Note: This is a District Standard Legend. Some elements may not apply to specific project.)

- ① 4(100) Solid (Yellow)
- ② 4(100) Solid (White)
- ③ 2-6(150) Crosswalk @ 6'-6" (2m) min C.-C. (White)
2-8(200) Crosswalk @ 6'-6" (2m) min C.-C. (White) (When traffic signals are present.)
- ④ 6(150) Skip-Dash (White) (See Special Note 1)
- ⑤ 8(200) Solid (White)
- ⑥ 12(300) Diagonal (White) (Item ⑥ is shown on Std. 780001)
- ⑦ 24(600) Stop Bar (White)
- ⑧ Letters & Arrows (See Std. 780001 and Special Notes 2 & 3)
- ⑨ 4(100) Skip-Dash (Yellow) (See Special Note 1)
- ⑩ 12(300) Diagonal (Yellow) (See Table A) 45°
- ⑪ 4(100) Double Solid (Yellow) 11(280) C.-C. See Table A

SPECIAL NOTES

1. Skip-Dash markings will be centered between both ends of city blocks and shall be placed in alignment transversely across the pavement.
2. The following shall apply to arrows located in one-way left turn lanes:
 - A. A minimum of two (2) arrows is required.
 - B. The maximum spacing between arrows is 80' (24 m).
 - C. Arrows shall be evenly spaced if three (3) or more are required.
3. The following shall apply to arrow pairs located in two-way left turn lanes:
 - A. A minimum of two (2) arrow pairs is required.
 - B. The maximum spacing between arrow pairs is 200' (61 m).
 - C. Arrow pairs shall be evenly spaced if three (3) or more are required.
 - D. The spacing between BI Directional Left Turn Arrows is 33' (10 m).

GENERAL NOTES

1. Refer to State Standard 780001 for additional Pavement Markings including letters & arrows.
2. See Plans for Pavement Markings adjacent to curbed islands and medians, and through lane reductions.

01-01-97	RENUM. E-8.03. NEW REVISION BOX	-I.P.-	10-16-06	REVISED TO 2007 SPEC.
02-07-97	ADD BI DIRECTIONAL DIMENSION	-J.A.-		
10-97	CORRECT BI DIRECTIONAL DIMENSION	-J.A.-		
08-02	ADD CROSSWALK DIMS. WITH I.S.	-M.A.-		

**STATE OF ILLINOIS
DEPARTMENT OF TRANSPORTATION**

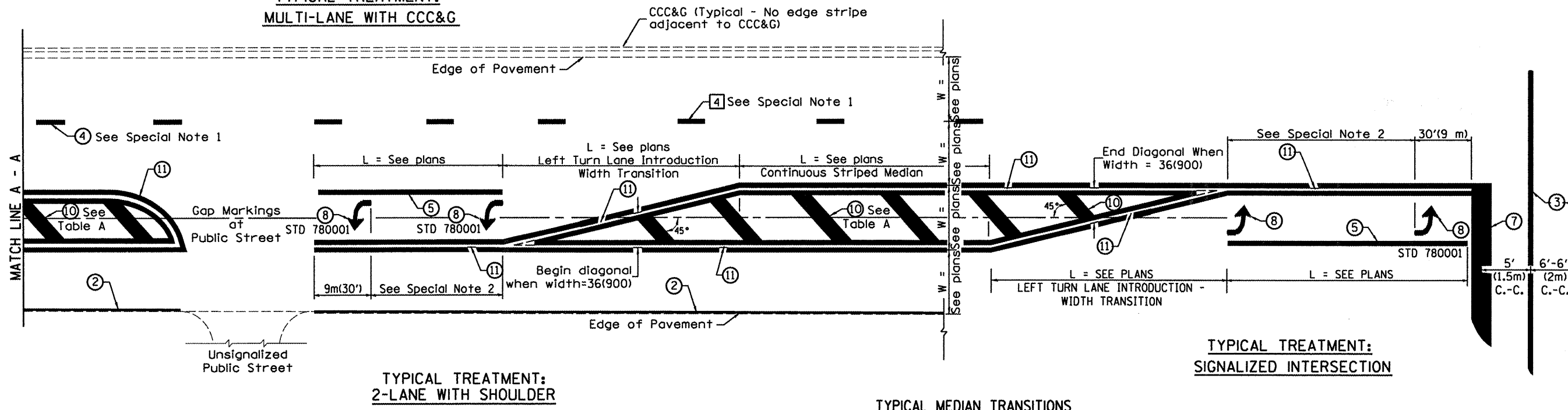
NOT TO SCALE

TYPICAL PAVEMENT MARKINGS

F.A.P. RTE.	SECTION	COUNTY	TOTAL SHEETS	SHEET NO.
22	(14,128)RS-3(129)RS-3	STARK	25	24
			68499	

SBI-1-0E-2
CADD SIG. 780001-04

**TYPICAL TREATMENT:
MULTI-LANE WITH CCC&G**



**TYPICAL TREATMENT:
2-LANE WITH SHOULDER**

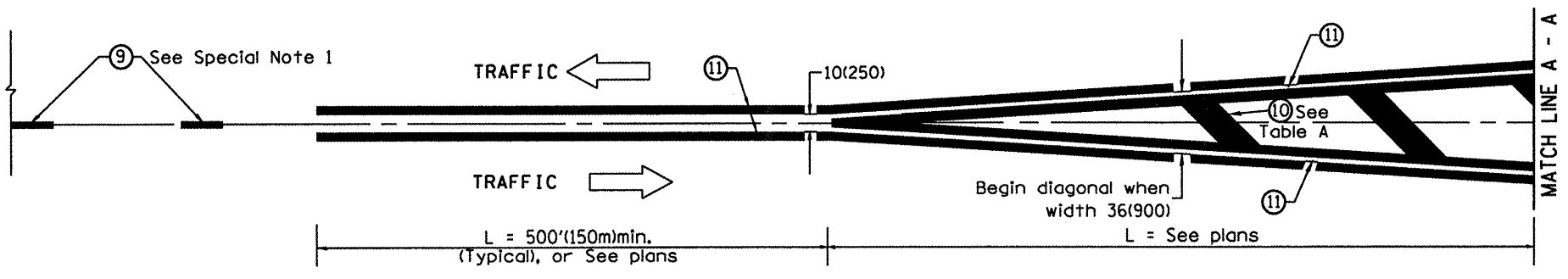
TYPICAL MEDIAN TRANSITIONS

FLUSH PAVED MEDIAN: RESTRICTED LEFT TURN LANE

TABLE A

RECOMMENDED SPACING BETWEEN DIAGONAL LINES

SPEED LIMIT RANGE	CONTINUOUS	INTERSECTION CHANNELIZATION (Includes Width Transitions for Median and Left Turn Lane Introductions)
Less Than 30 mph (50 km/h)	50' (15m)	15' (5m)
30 - 45 mph (50 - 70 km/h)	75' (23m)	20' (6m)
Over 45 mph (70 km/h)	150' (46m)	30' (9m)



MEDIAN INTRODUCTION - WIDTH TRANSITIONS

All dimensions are in inches (millimeters) unless otherwise noted.