

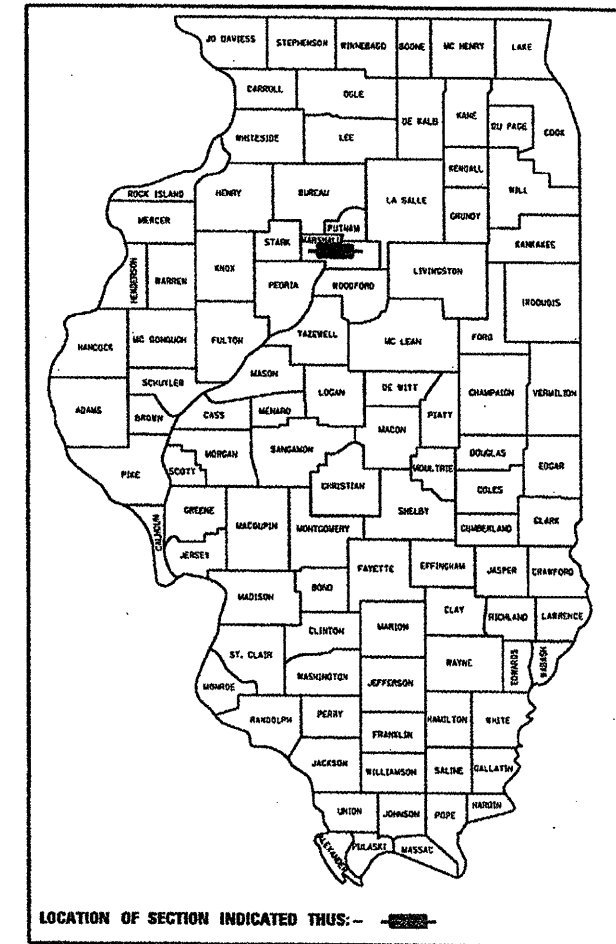
F.A. RTE.	SECTION	COUNTY	TOTAL SHEETS	SHEET NO.
VAR	D4 BRIDGE WASH	MARSHALL	6	1

STATE OF ILLINOIS
DEPARTMENT OF TRANSPORTATION
DIVISION OF HIGHWAYS

**PROPOSED
HIGHWAY PLANS**

F.A.P. ROUTES 649 & 653 (IL. 17 & 18)
SECTION D4 BRIDGE WASHING 2009
MARSHALL COUNTY
C-94-042-09

D-94-029-09



INDEX OF SHEETS

1. Cover Sheet
2. Commitments & General Notes
3. Summary of Quantities
4. Location #1 (IL 18)
5. Location #2 (IL 17)
6. Attenuator Truck Detail

HIGHWAY STANDARDS

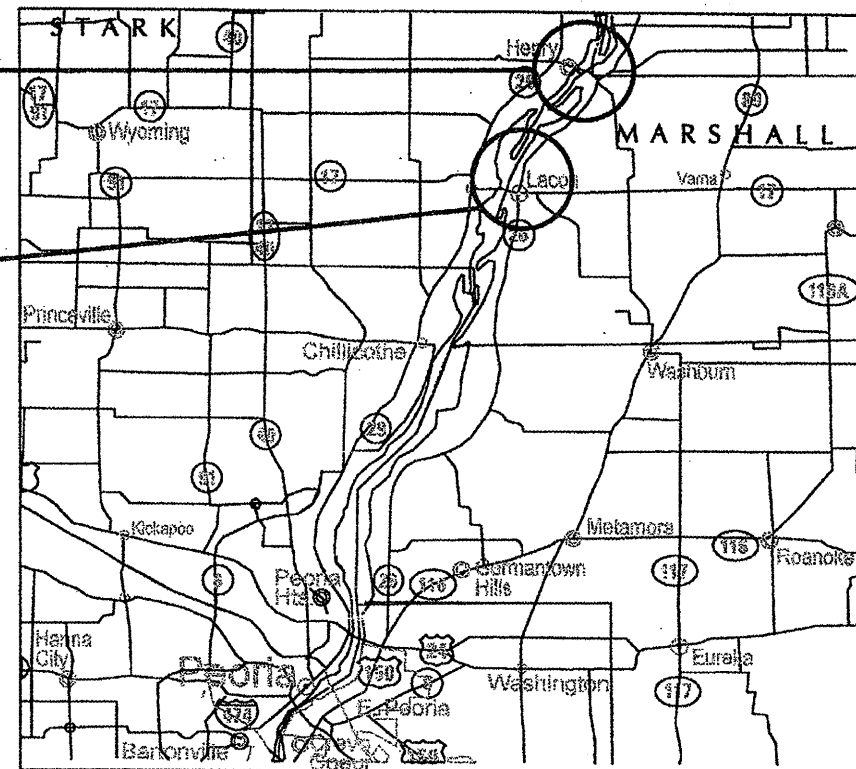
- 701001-02
- 701006-03
- 701101-02
- 701106-02
- 701201-03
- 701206-02
- 701901-01

ADT

- 2950 - IL 18 over IL River
- 7000 - IL 17 over IL River

J.U.L.I.E.
JOINT UTILITY LOCATION INFORMATION FOR EXCAVATION
1-800-892-0123

- Location #1
S.N. 062-0036
IL 18 (EB & WB)
Over IL River
- Location #2
S.N. 062-0003
IL 17 (EB & WB)
Over IL River



DESCRIPTION OF WORK

This project consists of washing two structures at 2 different locations over the Illinois River in District 4.

STATE OF ILLINOIS
DEPARTMENT OF TRANSPORTATION
DIVISION OF HIGHWAYS

SUBMITTED 2/5/09
[Signature] DISTRICT ENGINEER
May 8, 2009
Charles J. Ingemoll [Signature]
ENGINEER OF DESIGN AND ENVIRONMENT
May 8, 2009
Christine M. Reed [Signature]
DIRECTOR, DIVISION OF HIGHWAYS

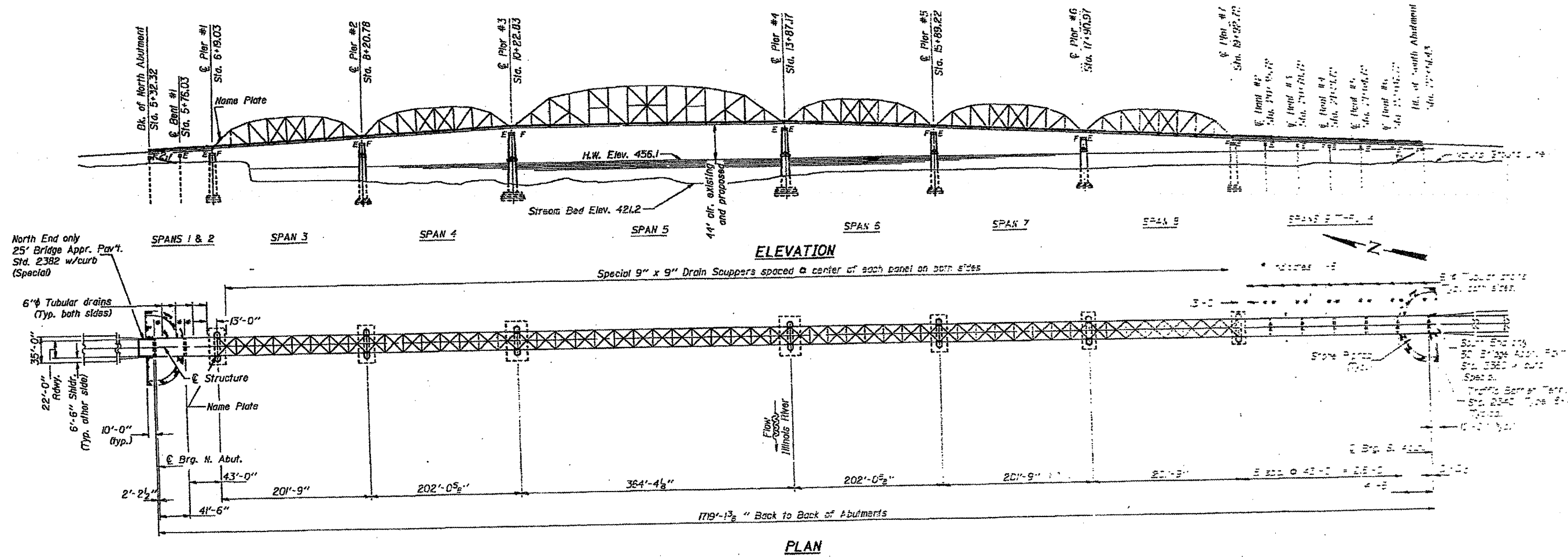
**PRINTED BY THE AUTHORITY
OF THE STATE OF ILLINOIS**

PROJECT ENGINEER: JIM MILLER (309) 671-3451

DESIGN ENGINEER: TOM INGLIS (309) 671-3481

CONTRACT NO. 68866
CATALOG NO. 034189-00D

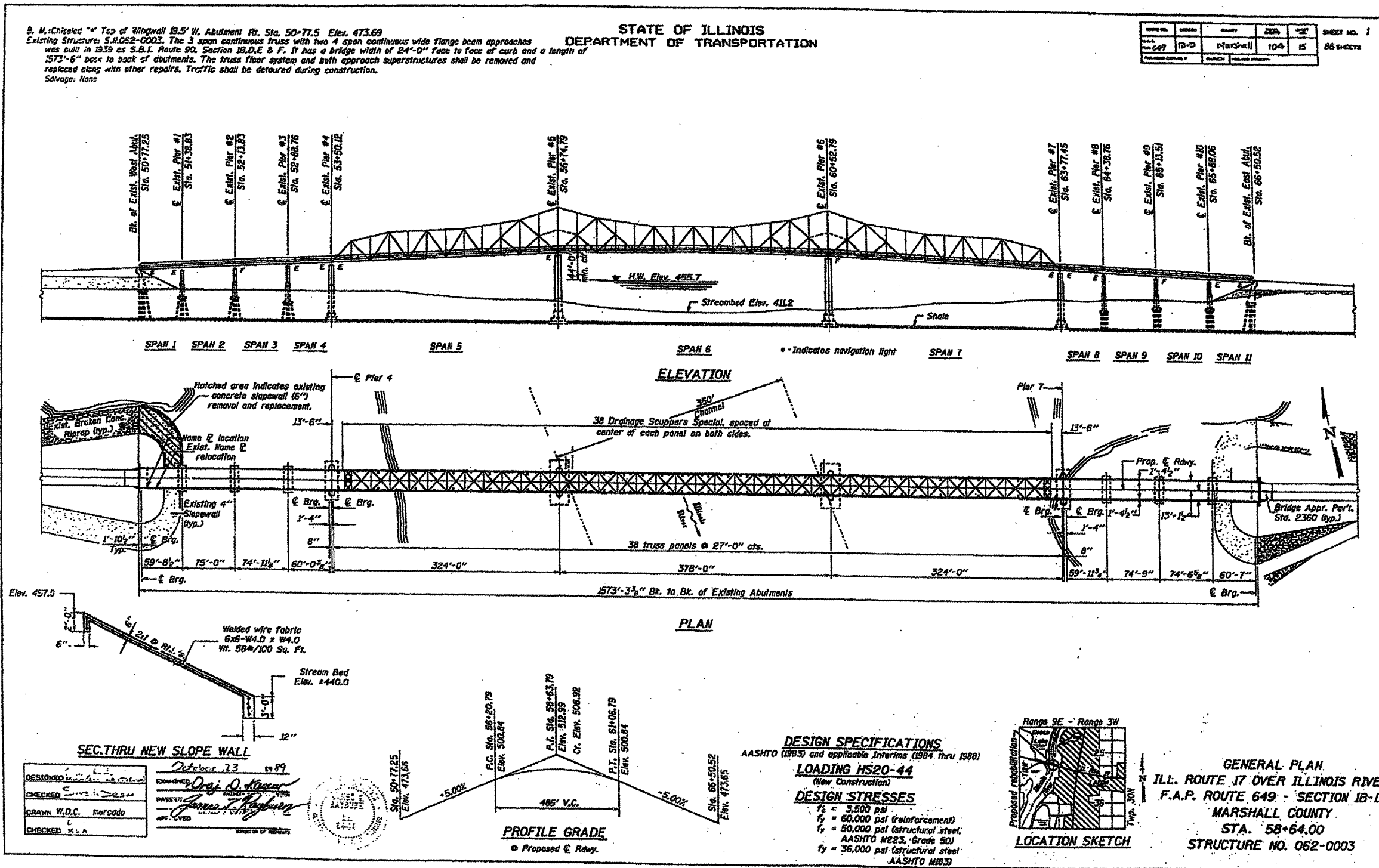
Location #1 (IL 18 Over IL River) For Informational Purposes Only



S.N. 062-0036

FILE NAME = S:\GEN\DRAWING\STO&PLNS\	USER NAME = snglstj	DESIGNED - <i>dstg/kmg</i>	REVISED - revised by1	STATE OF ILLINOIS DEPARTMENT OF TRANSPORTATION	LOCATION #1 (IL 18 OVER IL RIVER) sheet title line 2	F.A. RTE.	SECTION	COUNTY	TOTAL SHEETS	SHEET NO.	
SQA014\Josh K\		DRAWN - <i>dstg/kmg</i>	REVISED - revised by2			Var.	D4 Bridge Washing 2009	Marshall	4	4	
Bridge Washing 68866.dgn		CHECKED - checked by	REVISED - revised by3			CONTRACT NO. 68866					
		DATE - <i>06/20/09</i>	REVISED - revised by4			ILLINOIS FED. AID PROJECT					

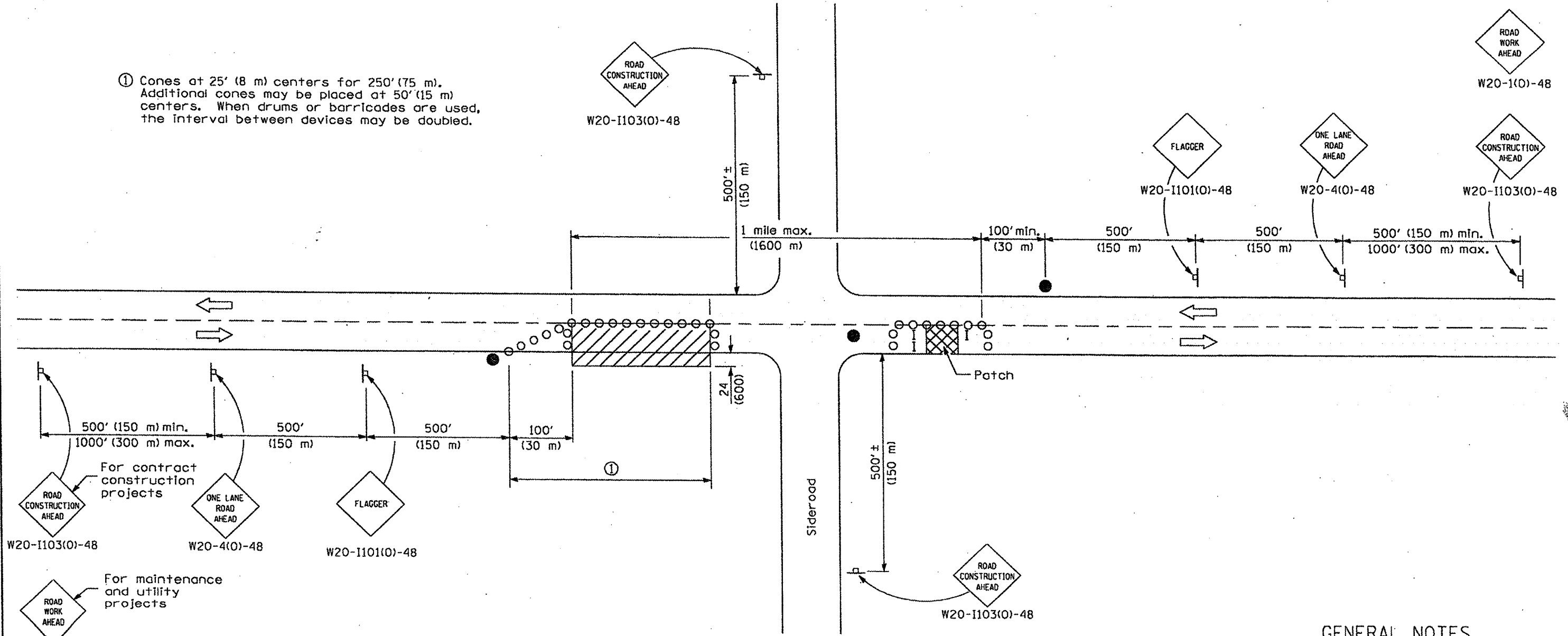
Location #2 (EB & WB IL 17) Over IL River) For Informational Purposes Only



S.N. 062-0003

FILE NAME = S:\DEN\DRIFT\STDA\PLNS\	USER NAME = inglatj	DESIGNED - <i>deaf/knd/wds</i>	REVISED - revised by1	STATE OF ILLINOIS DEPARTMENT OF TRANSPORTATION	Location 2 - IL 17 over IL RIVER	F.A.P. RTE.	SECTION	COUNTY	TOTAL SHEETS	SHE NO
SOURD14\Josh K\		DRAWN - <i>deaf/knd/wds</i>	REVISED - revised by2			Var. D4 Bridge Washing 2009	Marshall	6	5	
Bridge Washing 68865.dgn		CHECKED - checked by	REVISED - revised by3			SCALE: scale	SHEET NO. 5 OF 8 SHEETS	station from	station to	ILLINOIS FED. AID PROJECT
PLOT SCALE = 98.1743' / IN.		DATE - <i>04/24/09</i> date	REVISED - revised by4							

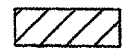




① Cones at 25' (8 m) centers for 250' (75 m). Additional cones may be placed at 50' (15 m) centers. When drums or barricades are used, the interval between devices may be doubled.



For contract construction projects
 W20-1103(O)-48 W20-4(O)-48 W20-1101(O)-48

For maintenance and utility projects
 W20-1(O)-48

SYMBOLS

-  Work area
-  Sign
-  Barricade or drum
-  Cone, drum or barricade
-  Flagger with traffic control sign

TYPICAL APPLICATIONS

- Isolated patching
- Utility operations
- Storm sewer
- Culverts
- Cable placement

GENERAL NOTES

This Standard is used where at any time, any vehicles, equipment, workers or their activities will encroach in the area between the center line and a line 24 (600) outside the edge of pavement for daylight operation.

When the distance between successive work areas exceeds 2000' (600 m), additional warning signs, flaggers, and taper shall be placed as shown.

All dimensions are in inches (millimeters) unless otherwise shown.

Illinois Department of Transportation

APPROVED January 1, 2009
 ENGINEER OF OPERATIONS

APPROVED January 1, 2009
 ENGINEER OF DESIGN AND ENVIRONMENT

ISSUED 1-1-97

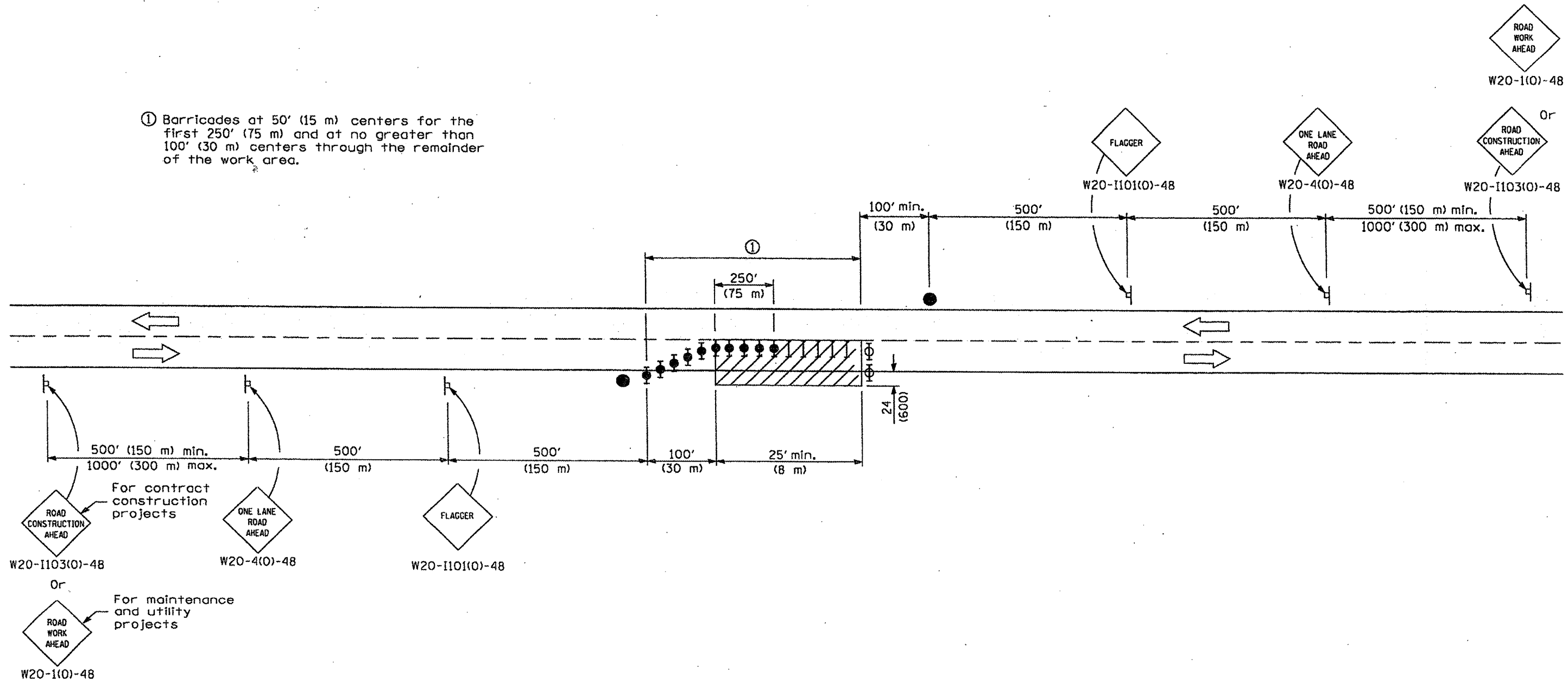
DATE	REVISIONS
1-1-09	Switched units to English (metric).
	Corrected sign No.'s.
1-1-05	Revised title and notes.
	Moved flagger.

**LANE CLOSURE, 2L, 2W, DAY ONLY
 FOR SPEEDS ≥ 45 MPH**

CONTRACT #68866 SHEET #7

STANDARD 701201-03

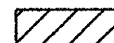
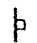




① Barricades at 50' (15 m) centers for the first 250' (75 m) and at no greater than 100' (30 m) centers through the remainder of the work area.



TYPICAL APPLICATIONS

Isolated patch
Installation of drainage structure
Utility operations

SYMBOLS

-  Work area
-  Sign
-  Flagger with traffic control sign
-  Barricade or drum
-  Barricade or drum with flashing light
-  Barricade or drum with steady burning light

GENERAL NOTES

This Standard is used where at any time, any vehicle, equipment, workers or their activities will encroach in the area between the center line and a line 24 (600) from the edge of pavement for nighttime operation.

All dimensions are in inches (millimeters) unless otherwise shown.

Illinois Department of Transportation

APPROVED January 1, 2009
ENGINEER OF OPERATIONS

APPROVED January 1, 2009
ENGINEER OF DESIGN AND ENVIRONMENT

16-1-1 (03/15)

DATE	REVISIONS
1-1-09	Switched units to English (metric).
1-1-05	Corrected sign No.'s.
	Revised title and notes.

**LANE CLOSURE, 2L, 2W, NIGHT ONLY
FOR SPEEDS ≥ 45 MPH**
CONTRACT # 68866 SHEET # 8
STANDARD 701206-02