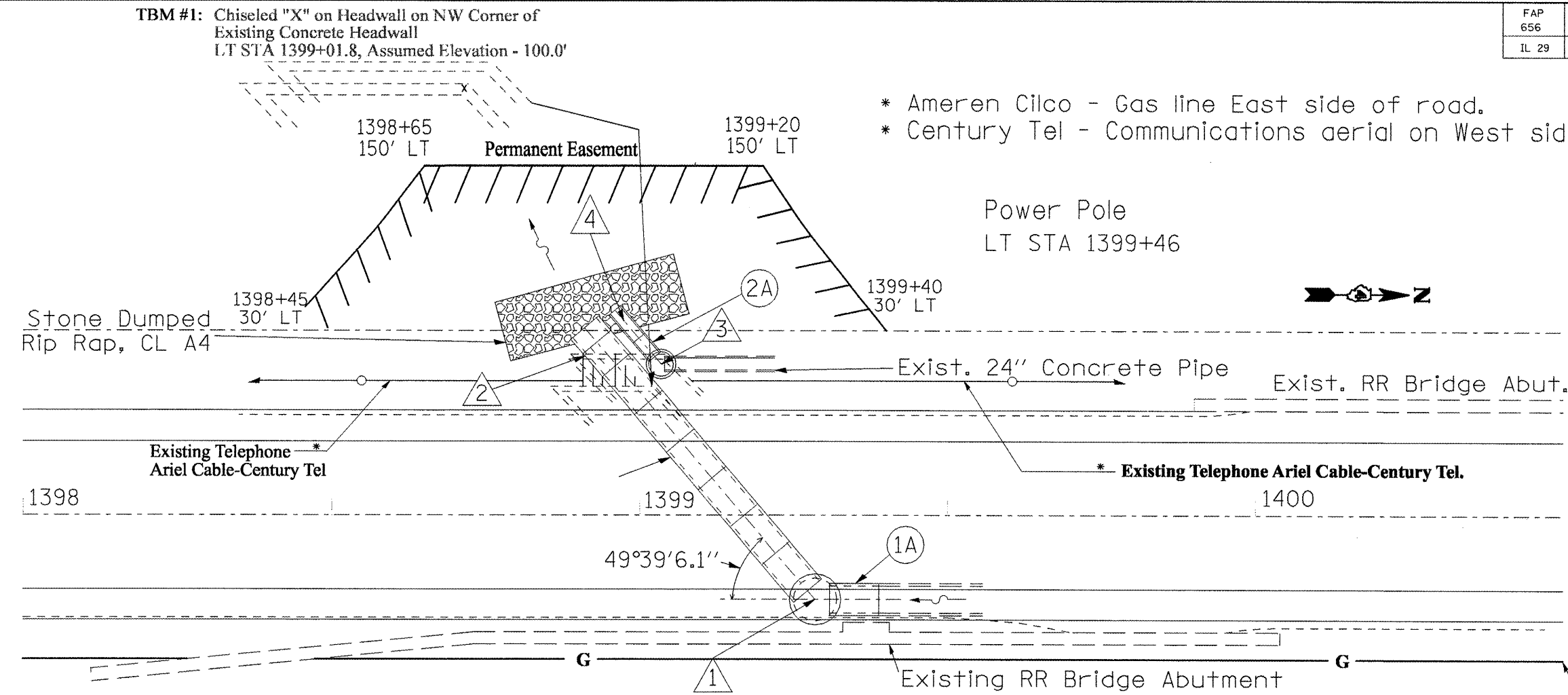


FAP 656	FAU 6757	SECTION	COUNTY	TOTAL SHEETS	SHEET NO.
IL 29	US 150	*	TAZEWELL	32	15

\*D-4 STRUCTURE REPAIR 2008



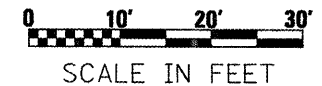
- \* Ameren Cilco - Gas line East side of road.
- \* Century Tel - Communications aerial on West side of road.

PIPE RUN AND TRENCH BACKFILL TABLE

PIPE RUN #	LOCATION	TYPE	LENGTH	TRENCH BACKFILL
			(FT)	(CU YD)
1A	RT STA. 1399+31 TO RT STA. 1399+39	TYPE 2, REIN CONC ELLIP, EQV ROUND SIZE 42"	8	
1B	LT STA. 1398+96 TO RT STA 1399+27	TYPE 2, REIN CONC ELLIP, EQV ROUND SIZE 48"	48	42
2A	LT STA. 1398+98 TO LT STA. 1399+02	TYPE 2, REIN CONCRETE CULVERT PIPE 24"	4	

Existing 4" Wrapped Steel Intermediate Pressure Gas Main (Approx. 3' Cover)

STURUCTURE #	LOCATION	OFFSET (FT)	TYPE	QTY. EACH	FRAME & GRATE	TOP OF GRATE ELEV.	INVERT ELEV.	
							N	W
1	RT STA. 1399+29	13.67'	MANHOLE TYPE A, 8' DIAMETER	1	TYPE 4	99.73	94.73	94.73
2	LT STA. 1398+97	24.34'	PRC REIN CONC FLRD END SEC RS 48"	1	GRT CONC FLD END SEC 48" EQV			
3	LT STA. 1399+03	24.50'	MANHOLE TYPE A, 4' DIAMETER	1	TYPE 1, CLOSED LID	98.1	94.43	94.43
4	LT STA. 1398+98	28.74'	PRC FLARED END SEC 24"	1	GRT CONC FLD END SEC 24"			



NOTE:

**No overhead or underground electric facilities at this location.**  
**Existing fiber optic and coax in the vicinity of this project under roadway**  
**Call JULIE for exact loactions of all utilities.**

REVISIONS	
NAME	DATE

ILLINOIS DEPARTMENT OF TRANSPORTATION  
**PROPOSED DRAINAGE**  
**IL 29**  
 DATE \_\_\_\_\_ CHECKED BY \_\_\_\_\_