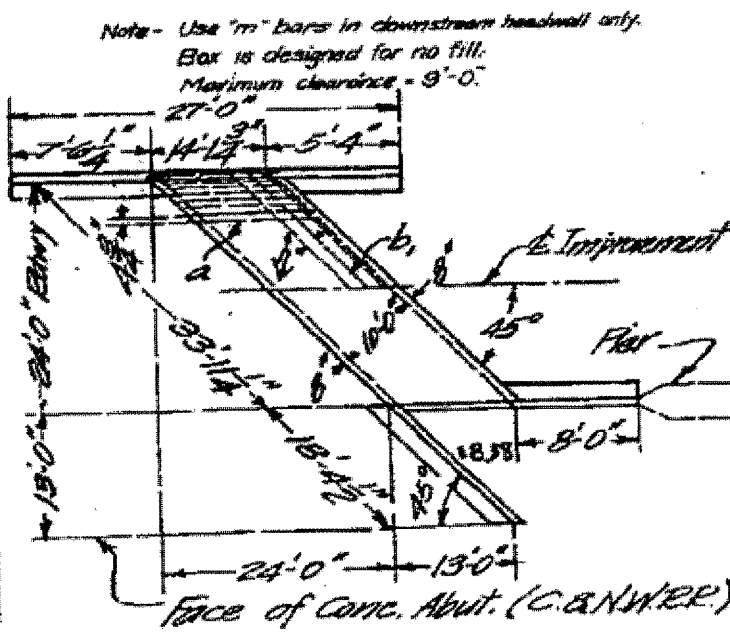
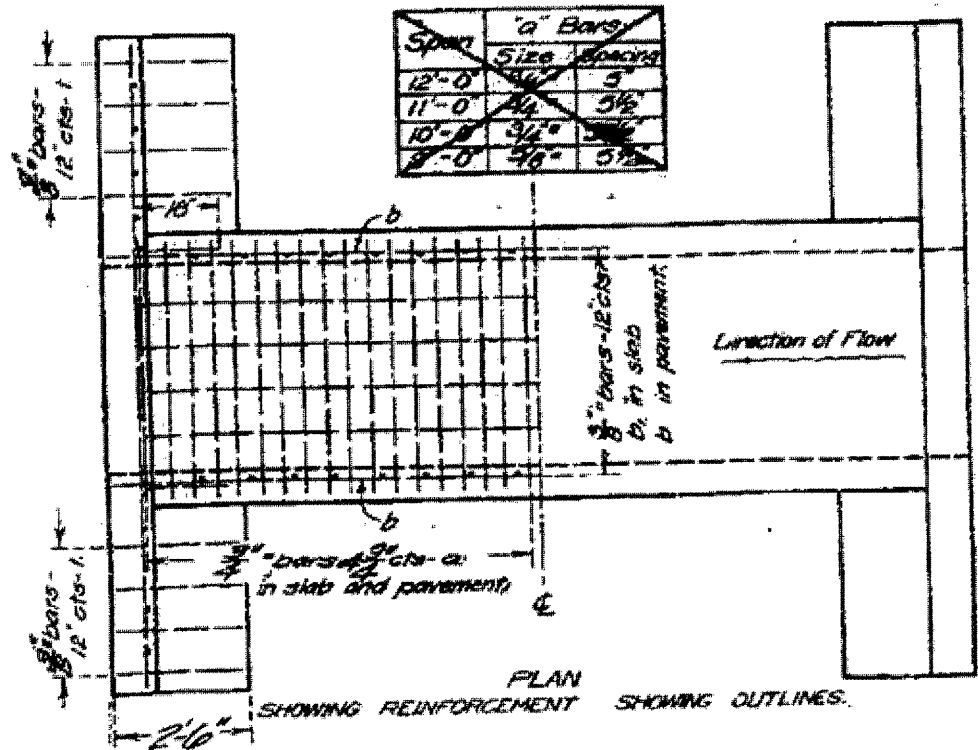
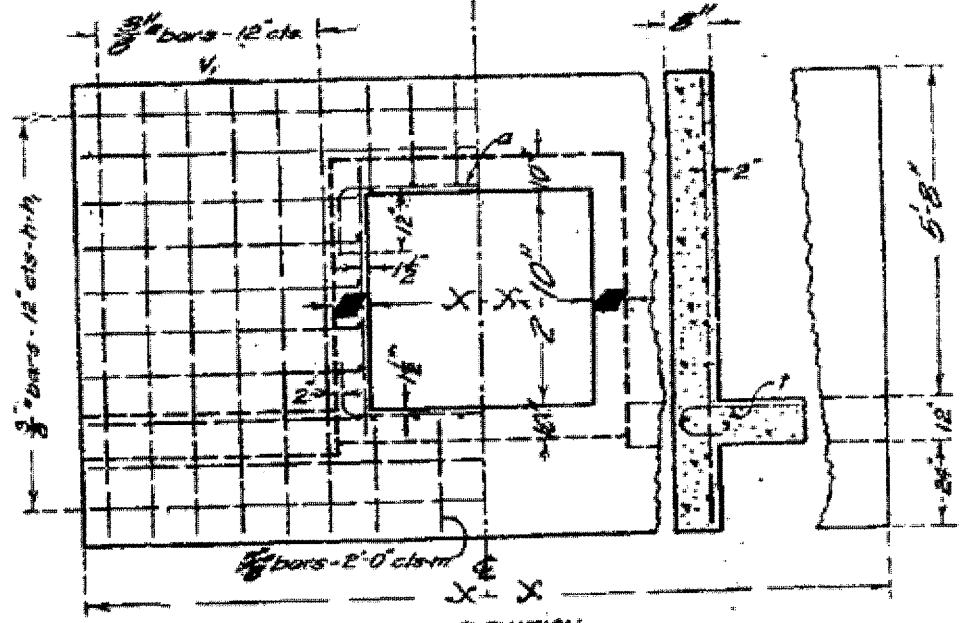
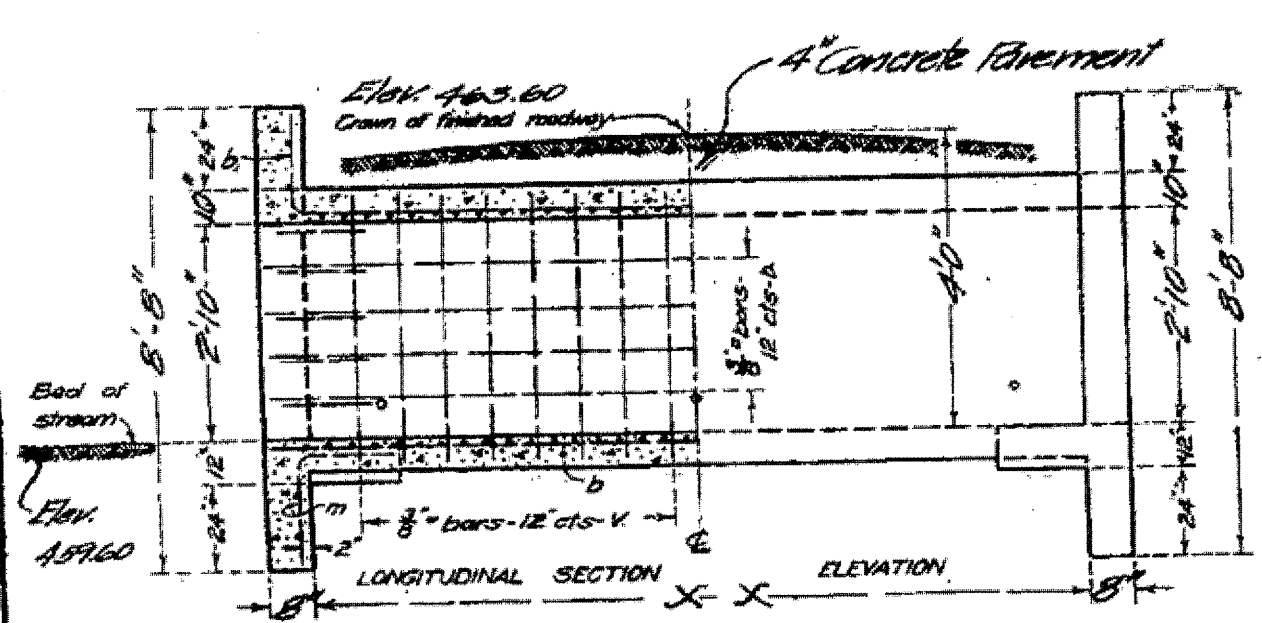


STATE OF ILLINOIS
STATE HIGHWAY DEPARTMENT
REINFORCED CONCRETE BOX CULVERT

FED. ROAD DIST. NO.	STATE	FED. AID PROJ. NO.	FISCAL YEAR	SHEET NO.	TOTAL SHEETS
7	ILL	6	1948 1949	33	191



BILL OF MATERIAL

Bars	No.	Size	Length
v	68	3/8"	12'-3"
v	39	3/8"	6'-6"
h	8	3/8"	12'-3"
h	5	3/8"	6'-0"
h ₂	10	3/8"	9'-0"
a	128	3/8"	17'-6"
b	30	3/8"	18'-0"
b ₁	22	3/8"	20'-6"
r	39	3/8"	3'-0"
m	8	3/8"	5'-0"
h ₃	4	3/8"	22'-6"
h ₄	9	3/8"	20'-0"
Steel - Lbs			5370
Concrete - Cu Yds			43.5

Class A concrete to be used throughout
Proportions 1 - 2 1/2 - 4

STANDARD
COMPUTED
CHECKED
SPECIAL
EXAMINED
APPROVED
April 24, 1949

BM - Spike in T.P. right of Sta. 1400+100 - Elev. 462.51

STATION 1399+00
FEDERAL AID
PROJECT 6 - SEC. L-15d
TAZEWELL CO.

FOR INFORMATION PURPOSES ONLY