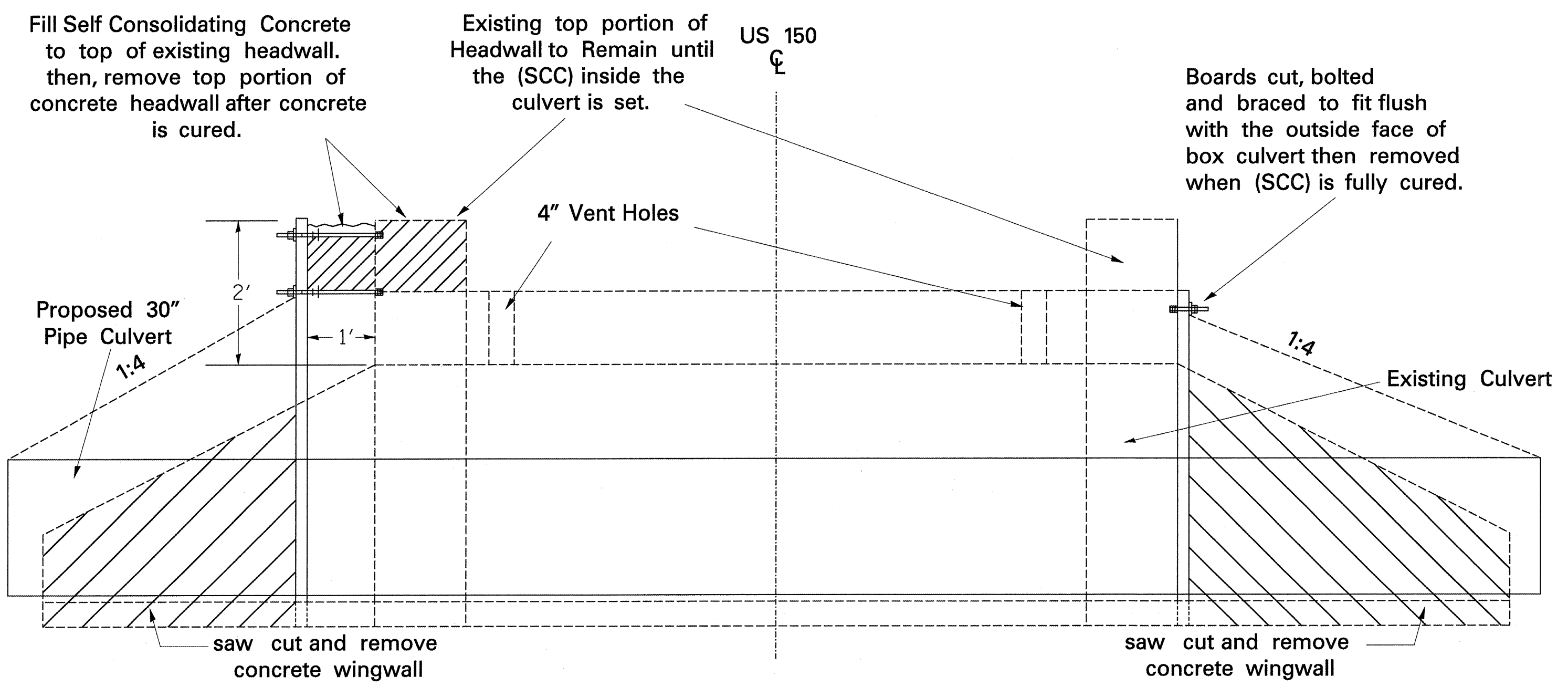


FAP 656	FAU 6757	SECTION	COUNTY	TOTAL SHEETS	SHEET NO.
IL 29	US 150	*	TAZEWELL	32	23

*D-4 STRUCTURE REPAIR 2008



Fill Self Consolidating Concrete to top of existing headwall. then, remove top portion of concrete headwall after concrete is cured.

Existing top portion of Headwall to Remain until the (SCC) inside the culvert is set.

US 150
CL

Boards cut, bolted and braced to fit flush with the outside face of box culvert then removed when (SCC) is fully cured.

Proposed 30" Pipe Culvert

4" Vent Holes

Existing Culvert

saw cut and remove concrete wingwall

saw cut and remove concrete wingwall

NOTE:

Contractor is to maintain 2' head of material (head pressure) until SCC is apparent through both vent holes.

REVISIONS	
NAME	DATE
Kyle Wheelwright	02-26

ILLINOIS DEPARTMENT OF TRANSPORTATION
**FILL EXISTING
 CULVERT
 DETAIL US 150**
 DATE _____ CHECKED BY _____