

STATE OF ILLINOIS  
DEPARTMENT OF TRANSPORTATION  
DIVISION OF HIGHWAYS  
**PROPOSED  
CONTRACT MAINTENANCE**

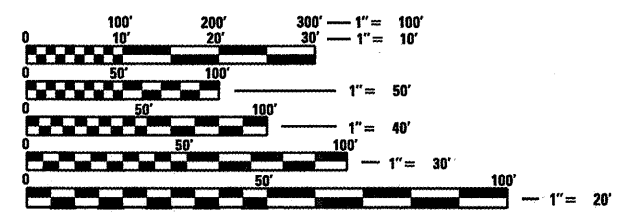
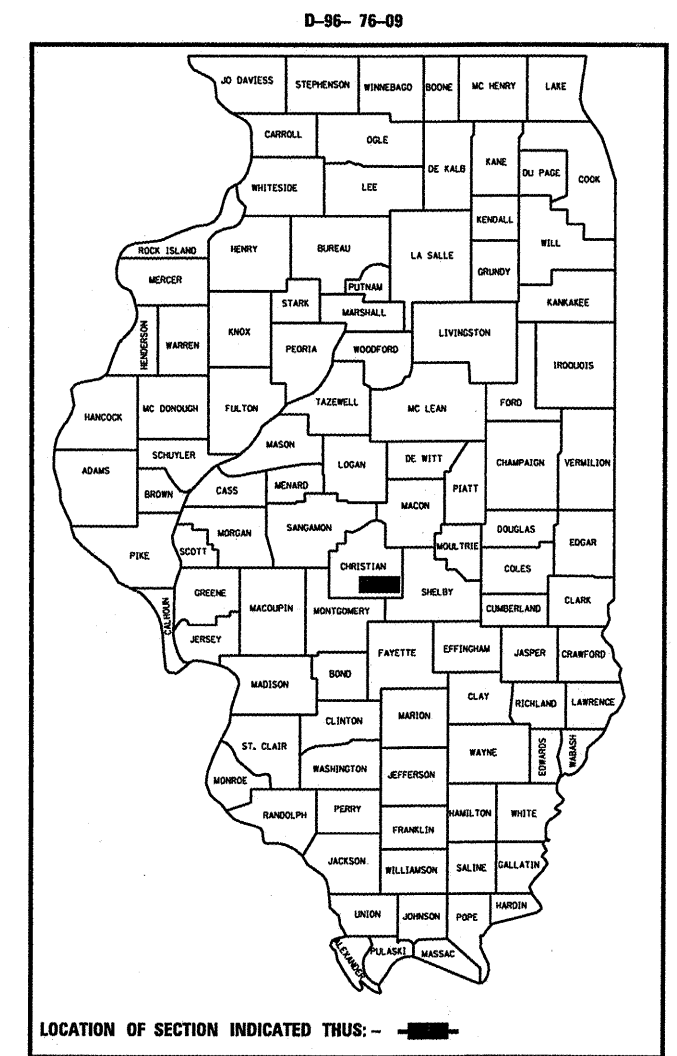
F.A.P. RTE.	SECTION	COUNTY	TOTAL SHEETS	SHEET NO.
325	43RS-6	ILLINOIS	7	1
FED. ROAD DIST. NO.		CONTRACT NO. 72C81		

FOR INDEX OF SHEETS, SEE SHEET NO. 2

FAP322 ROUTE (US 51, IL 16)  
SECTION 43RS-6

RESURFACING (SMART)  
CHRISTIAN COUNTY

C-96-076-09  
R 1 E

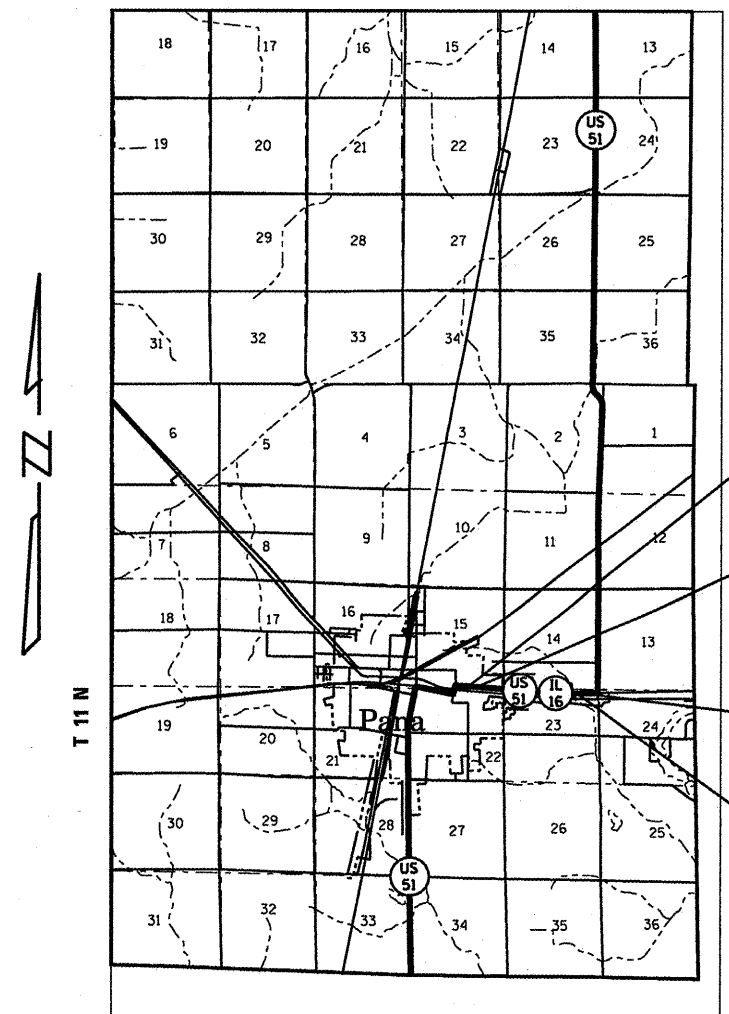


FULL SIZE PLANS HAVE BEEN PREPARED USING STANDARD ENGINEERING SCALES. REDUCED SIZED PLANS WILL NOT CONFORM TO STANDARD SCALES. IN MAKING MEASUREMENTS ON REDUCED PLANS, THE ABOVE SCALES MAY BE USED.

J.U.L.I.E.  
JOINT UTILITY LOCATION INFORMATION FOR EXCAVATION  
1-800-892-0123  
OR 811

PLAN AND CONTRACT TECHNICIAN  
TIMOTHY SHARP - (217)782-7743

CONTRACT NO. 72C81



BEGIN PROJECT  
STA. 33 + 75.00

STATION EQUATION  
39 + 57.12bk = 0 + 00.00ah

END PROJECT  
STA 54 + 82.00

BRIDGE OMISSION  
STA. 52 + 20.52  
TO 52 + 43.86

NET LENGTH = 6,064.14 FT. = 1.149 MILE

STATE OF ILLINOIS  
DEPARTMENT OF TRANSPORTATION  
DIVISION OF HIGHWAYS

SUBMITTED MARCH 30 20 09  
Raymond D. Orzell  
DEPUTY DIRECTOR OF HIGHWAYS, REGION ENGINEER

May 8, 20 09  
Charles J. Ingersoll  
ENGINEER OF DESIGN AND ENVIRONMENT

May 8, 20 09  
Christine M. Reed  
DIRECTOR OF HIGHWAYS, CHIEF ENGINEER

**PRINTED BY THE AUTHORITY  
OF THE STATE OF ILLINOIS**