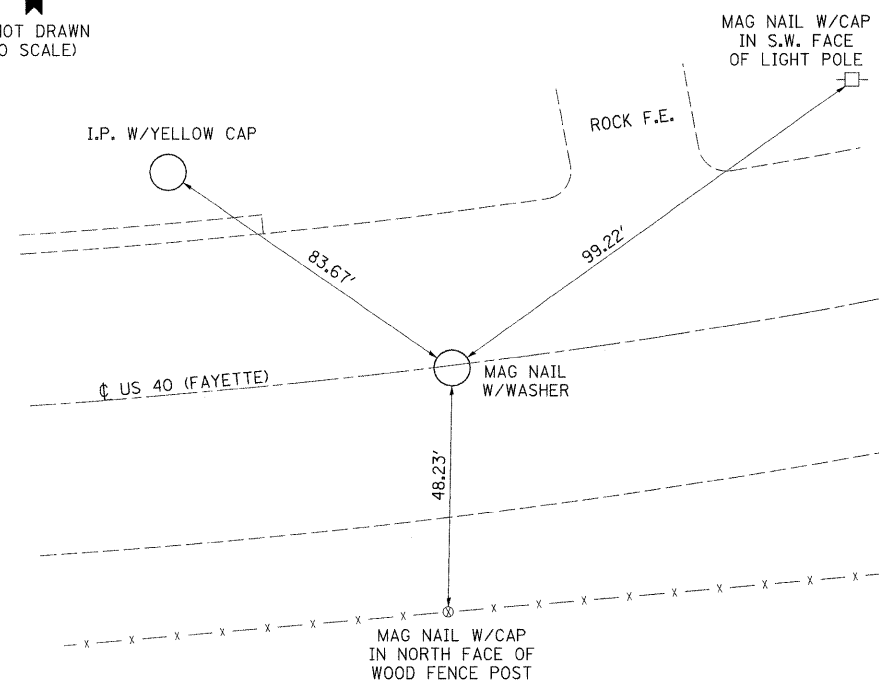




P. T. STA. EQUATION:

88+97.98 (BK) =  
35+93.74 AH)

(NOT DRAWN TO SCALE)



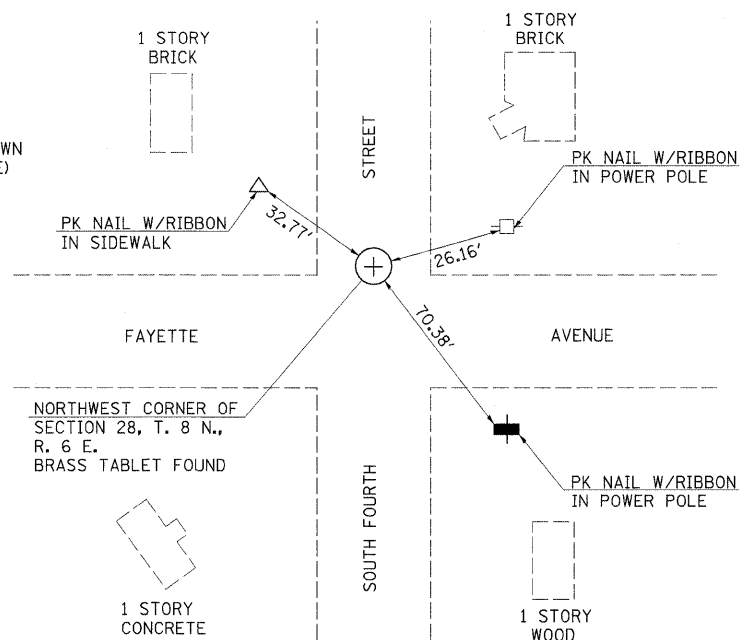
MONUMENT RECORD

LAND SURVEY MONUMENTS SITUATED IN SECTION 28, TOWNSHIP 8 NORTH, RANGE 6 EAST, OF THE 3RD PRINCIPLE MERIDIAN, EFFINGHAM COUNTY, ILLINOIS.

MONUMENT DESCRIPTION AND REMARKS: BRASS TABLET FOUND NORTHWEST CORNER OF SECTION 28, TOWNSHIP 8 NORTH, RANGE 6 EAST, 3RD PRINCIPLE MERIDIAN.



(NOT DRAWN TO SCALE)



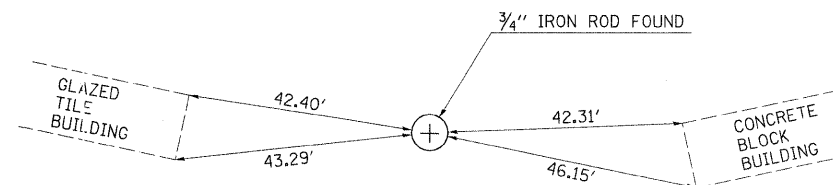
MONUMENT RECORD

LAND SURVEY MONUMENTS SITUATED IN SECTION 28, TOWNSHIP 8 NORTH, RANGE 6 EAST, OF THE 3RD PRINCIPLE MERIDIAN, EFFINGHAM COUNTY, ILLINOIS.

MONUMENT DESCRIPTION AND REMARKS: 3/4" IRON ROD FOUND N.W. COR., NE 1/4, SECTION 28,



(NOT DRAWN TO SCALE)



FILE NAME =	USER NAME = swartzrw	DESIGNED -	REVISED -
c:\pwork\pwork\swartzrw\dms51160\shd	tails_74254.dgn	DRAWN -	REVISED -
	PLOT SCALE = 50.0000' / IN.	CHECKED -	REVISED -
	PLOT DATE = 3/19/2009	DATE -	REVISED -

STATE OF ILLINOIS  
DEPARTMENT OF TRANSPORTATION

MONUMENT TIE POINTS & CENTERLINE CROSS TIES

SCALE: NA SHEET NO. 3 OF 3 SHEETS STA. TO STA.

F.A.P. RTE.	SECTION	COUNTY	TOTAL SHEETS	SHEET NO.
95	(18Z,JRS-3	EFFINGHAM	38	8
FED. ROAD DIST. NO. ILLINOIS FED. AID PROJECT			CONTRACT NO. 74254	