

F.A.P. RTE.	SECTION	COUNTY	TOTAL SHEETS	SHEET NO.
310	60-15VB-1&2	MADISON	149	2
STA.		TO STA.		
FED. ROAD DIST. NO.		ILLINOIS	FED. AID PROJECT	
CONTRACT NO. 76634				

INDEX OF SHEETS

1	COVER SHEET
2	GENERAL NOTES, STANDARDS, INDEX OF SHEETS AND LEGEND
3-4	SUMMARY OF QUANTITIES
5-6	TYPICAL SECTIONS
7	SCHEDULES OF QUANTITIES
8-10	GENERAL LAYOUT & HORIZONTAL CONTROL
11-14	HORIZONTAL CONTROL TIES
15-20	PLAN AND PROFILE SHEETS
21-28	PLAT OF HIGHWAYS SHEETS
29-30	CLEAR ZONE AND SLOPE TRANSITION SHEET
31	GRADING PLAN
32-67	S.N. 060-0310 PLANS (NB IL 255 & RAMP C)
68-112	S.N. 060-0311 PLANS (SB IL 255 & RAMP D)
113-116	STORM WATER POLLUTION PREVENTION PLAN
117-121	SOIL STRATA PLAN AND PROFILE SHEETS
122-123	GUARDRAIL AND SHOULDER WIDENING SHEETS
124-125	MISCELLANEOUS DETAILS
126-134	FAP 310 (IL 255) CROSS SECTIONS
135-136	CULVERT CROSS SECTIONS
137-144	CONSTRUCTION ACCESS ROAD CROSS SECTIONS
145-149	RAILROAD NO. 1 CROSS SECTIONS

GENERAL NOTES

1. ALL ELEVATIONS REFER TO USGS MEAN SEA LEVEL DATUM.
2. ANY REFERENCE TO A STANDARD IN THESE PLANS SHALL BE INTERPRETED TO MEAN THE EDITION AS INDICATED BY THE NUMBER LISTED OR THE COPY OF STANDARD INCLUDED IN THESE PLANS. THE STANDARDS AND REVISION NUMBERS SHALL APPLY TO THIS PROJECT.
3. ABANDONED UNDERGROUND UTILITIES THAT CONFLICT WITH CONSTRUCTION SHALL BE DISPOSED OUTSIDE THE LIMITS OF RIGHT OF WAY ACCORDING TO ARTICLE 202.03 OF THE STANDARD SPECIFICATIONS AND AS DIRECTED BY THE ENGINEER. THIS WORK WILL NOT BE PAID FOR SEPARATELY BUT SHALL BE CONSIDERED INCLUDED IN THE COST OF EARTH EXCAVATION AND NO ADDITIONAL COMPENSATION WILL BE ALLOWED.
4. THE CONTRACTOR SHALL VERIFY ALL DIMENSIONS AND CONDITIONS IN THE FIELD PRIOR TO CONSTRUCTION AND ORDERING OF MATERIALS.
5. ALL TREES, BRUSH, AND SHRUBS WITHIN THE CONSTRUCTION LIMITS WILL BE REMOVED IN ACCORDANCE WITH THE STANDARD SPECIFICATIONS. ONLY THOSE TREES DESIGNATED BY THE ENGINEER OR LISTED IN THE TREE REMOVAL SCHEDULE SHALL BE REMOVED. TREES ALONG THE EDGE OF THE RIGHT OF WAY SHALL BE SAVED IF, IN THE OPINION OF THE ENGINEER, THEY DO NOT INTERFERE WITH CONSTRUCTION OPERATIONS. THE CONTRACTOR WILL PROTECT ALL REMAINING TREES FROM DAMAGE DUE TO HIS OPERATIONS.
6. ILLINOIS STATE LAW REQUIRES A 48-HOUR NOTICE TO BE GIVEN TO UTILITIES BEFORE DIGGING. FIELD MARKING OF FACILITIES MAY BE OBTAINED BY CONTACTING J.U.L.I.E. OR FOR NON-MEMBERS, THE UTILITY COMPANY DIRECTLY. AGENCIES KNOWN TO HAVE FACILITIES WITHIN THE PROJECT ARE AS FOLLOWS:

ABOVE GROUND

- *AMEREN UE

BELOW GROUND

- *SBC
- *FOSTERBURG WATER
- *IL AMERICAN WATER - ALTON
- *AMEREN UE
- *MCI WORLDCOM
- *AT&T CABLE SERVICES
- *SPRINT
- *VILLAGE OF GODFREY
- *CHARTER COMMUNICATIONS

MEMBERS OF J.U.L.I.E. (800)-892-0123 ARE INDICATED BY *. NON J.U.L.I.E. MEMBERS MUST BE NOTIFIED INDIVIDUALLY.

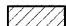
GENERAL NOTES

7. SEEDING SHALL BE PLACED ON ALL AREAS THAT ARE DISTURBED BY CONSTRUCTION OPERATIONS AS DIRECTED BY THE ENGINEER. SEEDING SHALL BE PAID FOR ONLY WITHIN THE PROPOSED RIGHT-OF-WAY OR EASEMENT LIMITS. ALL AREAS DISTURBED BY THE CONTRACTOR OUTSIDE THE PROPOSED CONSTRUCTION LIMITS SHALL BE SEEDED, AS DIRECTED BY THE ENGINEER, AT THE CONTRACTOR'S EXPENSE.
8. FERTILIZER NUTRIENTS SHALL BE APPLIED TO BOTH THE SEEDED AREAS AND THE AREAS COVERED WITH EROSION CONTROL BLANKET.
9. DO NOT INCLUDE MULCH OR EMULSIFIED ASPHALT ON EROSION CONTROL BLANKET AREAS.
10. IF ANY UNSUITABLE MATERIAL IS ENCOUNTERED DURING CONSTRUCTION, IT WILL BE NECESSARY TO REMOVE THE UNSUITABLE MATERIAL AND REPLACE IT WITH A SUITABLE MATERIAL AS APPROVED BY THE ENGINEER. THIS WILL BE PAID FOR ACCORDING TO ARTICLE 109.04.
11. THE PROPOSED EMBANKMENT SHALL BE BENCHED INTO THE EXISTING SLOPES TO THE SATISFACTION OF THE ENGINEER.
12. IF THERE IS A DISCREPANCY BETWEEN THE RIGHT OF WAY SHOWN ON THE PLANS AND THE PLAT OF HIGHWAYS, THE PLAT OF HIGHWAYS ALWAYS TAKES PRECEDENCE.
13. THE REMOVAL AND DISPOSAL OF ABANDONED FENCING, DEBRIS, BRUSH, RIPRAP, STONE, CONCRETE SLABS, TILE, SIDEWALK, ETC. NOT PAID FOR SPECIFICALLY ON THE PLANS WILL BE CONSIDERED TO BE INCLUDED IN THE EARTH EXCAVATION PAY ITEM.
14. THE FOLLOWING RATES OF APPLICATION HAVE BEEN ASSUMED IN CALCULATING PLAN QUANTITIES:

GRANULAR MATERIALS	2.5 M TONS / CU M
BITUMINOUS MATERIALS	2.0 LITERS / SQ M
AGGREGATE COVER AND SEAL COATS	0.014 M TONS / SQ M

1 METRIC TON = 1000 KG

LEGEND

- BOP** BEGINNING OF PROFILE GRADE
- EOP** END OF PROFILE GRADE
-  TREES TO BE REMOVED (AREA)

IDOT HIGHWAY STANDARDS

000001-05	STANDARD SYMBOLS, ABBREVIATIONS, AND PATTERNS
001001-02	AREAS OF REINFORCEMENT BARS
202001-01	EARTH MEDIAN DITCH CHECK
280001-04	TEMPORARY EROSION CONTROL SYSTEMS
515001-03	NAME PLATE FOR BRIDGES
542121-02	REINFORCED CONCRETE END SECTIONS FOR MULTIPLE (2&3) PIPE CULVERTS 1050mm THRU 1500mm AT RIGHT ANGLES WITH ROADWAY
701901-01	TRAFFIC CONTROL DEVICES
601101-01	

COMMITMENTS

NO COMMITMENTS HAVE BEEN MADE FOR THIS PROJECT.

REVISIONS		ILLINOIS DEPARTMENT OF TRANSPORTATION GENERAL NOTES & INDEX FAP 310 (IL 255) SECTION 60-15VB-1 & 2 MADISON COUNTY DRAWN BY EBB CHECKED BY
NAME	DATE	

SUMMARY OF QUANTITIES

F.A.P. RTE.	SECTION	COUNTY	TOTAL SHEETS	SHEET NO.
310	60-15VB-1&2	MADISON	149	3
STA.		TO STA.		
FED. ROAD DIST. NO.		ILLINOIS FED. AID PROJECT		
CONTRACT NO. 76634				

SUMMARY OF QUANTITIES				CONSTRUCTION TYPE CODE						
CODE NO	ITEM	UNIT	TOTAL QUANTITIES	URBAN						
				80% FEDERAL 20% STATE						
				1000	SEC 60-15VB-1 X171-58	SEC 60-15VB-2 X171-58				
28000300	TEMPORARY DITCH CHECKS	EACH	22	22						
28000500	INLET AND PIPE PROTECTION	EACH	7	7						
50500505	STUD SHEAR CONNECTORS	EACH	12354		6183	6171				
50800515	BAR SPLICERS	EACH	296		150	146				
51203200	TEST PILE METAL SHELLS	EACH	4		2	2				
51500100	NAME PLATES	EACH	2		1	1				
52100010	ELASTOMERIC BEARING ASSEMBLY, TYPE I	EACH	49		27	22				
52100020	ELASTOMERIC BEARING ASSEMBLY, TYPE II	EACH	9			9				
67000400	ENGINEER'S FIELD OFFICE, TYPE A	CAL MO	30	30						
67100100	MOBILIZATION	L SUM	1	1						
Z0041500	PLUG EXISTING CULVERTS	EACH	1	1						
Z0048665	RAILROAD PROTECTIVE LIABILITY INSURANCE	L SUM	1	1						
Z0065100	SETTLEMENT PLATFORMS	EACH	4	4						
M2010500	TREE REMOVAL, HECTARES	HA	2.0	2.0						
M2020010	EARTH EXCAVATION	CU M	6825	6825						
M2040800	FURNISHED EXCAVATION	CU M	154165	154165						
M2070400	POROUS GRANULAR EMBANKMENT, SPECIAL	CU M	353		181	172				
M2500200	SEEDING, CLASS 2	HA	4.2	4.2						
M2500400	NITROGEN FERTILIZER NUTRIENT	KG	420	420						
M2500500	PHOSPHORUS FERTILIZER NUTRIENT	KG	420	420						
M2500600	POTASSIUM FERTILIZER NUTRIENT	KG	420	420						
M2510115	MULCH, METHOD 2	HA	2.9	2.9						
M2510630	EROSION CONTROL BLANKET	SQ M	13101	13101						
M2800250	TEMPORARY EROSION CONTROL SEEDING	KG	1848	1848						
M2800400	PERIMETER EROSION BARRIER	METER	245	245						
M2800407	PERIMETER EROSION BARRIER, MODIFIED	METER	325	325						
M2810105	STONE RIPRAP, CLASS A3	SQ M	169		92	77				
M2810725	STONE DUMPED RIPRAP, CLASS B3	SQ M	282	282						
M2811840	RIPRAP FOR STILLING BASIN	M TON	204	204						
M2820200	FILTER FABRIC	SQ M	271	102	92	77				
M4021010	AGGREGATE SURFACE COURSE, TYPE B	M TON	2069	2069						
M5020100	STRUCTURE EXCAVATION	CU M	2083		981	1102				
M5030280	CONCRETE ENCASEMENT	CU M	26.9		13.6	13.3				
M5030290	FORM LINER TEXTURED SURFACE	SQ M	168		86	82				
M5030350	CONCRETE STRUCTURES	CU M	1240.5		626.8	613.7				
M5030360	CONCRETE SUPERSTRUCTURE	CU M	631.5		307.2	324.3				

REVISIONS	
NAME	DATE

ILLINOIS DEPARTMENT OF TRANSPORTATION
 SUMMARY OF QUANTITIES
 FAP 310 (IL 255)
 SECTION 60-15VB-1 & 2
 MADISON COUNTY
 DRAWN BY EBB
 CHECKED BY
 DATE

Rev. 5-28-09

ebb

p:\00f.iles\000024\Railroad-Bridge\ROADPLANS\SumQuant\015f.dgn

SUMMARY OF QUANTITIES

F.A.P. RTE.	SECTION	COUNTY	TOTAL SHEETS	SHEET NO.
310	60-15VB-1&2	MADISON	149	4
STA.	TO STA.			
FED. ROAD DIST. NO.	ILLINOIS	FED. AID PROJECT		
CONTRACT NO. 76634				

SUMMARY OF QUANTITIES				CONSTRUCTION TYPE CODE							
CODE NO	ITEM	UNIT	TOTAL QUANTITIES	URBAN							
				1000	SEC 60-15VB-1 X171-5B	SEC 60-15VB-2 X171-5B	80% FEDERAL 20% STATE				
M5030390	BRIDGE DECK GROOVING	SQ M	2421		1181	1240					
M5030450	PROTECTIVE COAT	SQ M	2741		1339	1402					
M5050105	FURNISHING AND ERECTING STRUCTURAL STEEL	L SUM	1		0.5	0.5					
M5080205	REINFORCEMENT BARS, EPOXY COATED	KG	195870		86570	109300					
M5110100	SLOPE WALL 100 MM	SQ M	2235		1081	1154					
M5120176	FURNISHING METAL SHELL PILES 356MM X 6.35MM	METER	4126.0		1801.0	2325.0					
M5120335	DRIVING PILES	METER	4126.0		1801.0	2325.0					
M5120900	TEMPORARY SHEET PILING	SQ M	1496		767	729					
M5200225	PREFORMED JOINT STRIP SEAL	METER	90.6		46.0	44.6					
M5210022	ANCHOR BOLTS, M24	EACH	76		36	40					
M5210024	ANCHOR BOLTS, M36	EACH	80		36	44					
M542E148	PRECAST REINFORCED CONCRETE FLARED END SECTIONS 1050MM	EACH	2	2							
M542E152	PRECAST REINFORCED CONCRETE FLARED END SECTIONS 1200MM	EACH	2	2							
M542E168	PRECAST REINFORCED CONCRETE FLARED END SECTIONS 1800MM	EACH	2	2							
M542T215	PIPE CULVERTS, CLASS C, TYPE 1 300MM (TEMPORARY)	METER	51.5	51.5							
M5429760	PIPE CULVERTS, TYPE 7 RCCP 1500MM	METER	113.0	113.0							
M5870300	CONCRETE SEALER	SQ M	292		149	143					
M5910100	GEOCOMPOSITE WALL DRAIN	SQ M	193		98	95					
M5930100	CONTROLLED LOW-STRENGTH MATERIAL	CU M	7	7							
M6011100	PIPE UNDERDRAINS FOR STRUCTURES 100MM	METER	144.9		71.1	73.8					
MX033777	PIPE CULVERTS, TYPE 5 RCCP 1050MM (JACKED)	METER	28.5	28.5							
MX033778	PIPE CULVERTS, TYPE 5 RCCP 1200MM (JACKED)	METER	29.0	29.0							
20076600	TRAINERS	HR	3000	3000							
M542E248	STEEL END SECTIONS 1050 MM	EACH	2	2							
M542E252	STEEL END SECTIONS 1200 MM	EACH	2	2							
MX030575	STEEL CASING PIPE BORED AND JACKED 1050 MM	METER	30.5	30.5							
MX030576	STEEL CASING PIPE BORED AND JACKED 1200 MM	METER	30.5	30.5							

© 1980

REVISIONS		ILLINOIS DEPARTMENT OF TRANSPORTATION SUMMARY OF QUANTITIES FAP 310 (IL 255) SECTION 60-15VB-1 & 2 MADISON COUNTY DRAWN BY EBB CHECKED BY
NAME	DATE	

Rev. 5-18-09

DATE

DRAWN BY EBB
CHECKED BY

ebb

p:\00f1es\000024\Railroad-Bridge\ROADPLANS\SumQuant\015f.dgn

SCHEDULES OF QUANTITIES

F.A.P. RTE.	SECTION	COUNTY	TOTAL SHEETS	SHEET NO.
310	60-15VB-1&2	MADISON	149	7
STA.		TO STA.		
FED. ROAD DIST. NO.		ILLINOIS FED. AID PROJECT		
CONTRACT NO. 76634				

TEMPORARY DITCH CHECKS

STATION TO STATION	SIDE	SPACING	EACH
FAP 310			
39+148.9	39+225.0	LT	70m
RAMP C			
0+165.0	0+250.0	RT	40m
0+188.1	0+165.0	LT & RT	80m
RAMP D			
0+084.6	0+185.0	RT	65m
0+167.6	0+185.0	LT & RT	15m
TEMPORARY ACCESS ROAD			
5+025.0	5+045.0	RT	90m
5+045.0	5+080.0	RT	25m
5+080.0	5+100.0	RT	15m
5+080.0	5+100.0	LT	15m
5+100.0	5+271.0	RT	75m
5+100.0	5+271.0	LT	75m
5+271.0	5+375.0	RT	70m
5+271.0	5+375.0	LT	70m
5+375.0	5+400.0	RT	15m
5+375.0	5+400.0	LT	15m
TOTAL			22

EARTHWORK SUMMARY

LOCATION STATION TO STATION	EARTH EXCAVATION	EARTH EXCAVATION ADJUSTED 25%	EMBANKMENT	EARTHWORK BALANCE
CU M				
FAP 310				
39+034.0	39+150.0	1725	1295	82840 (81545)
39+170.0	39+276.5	520	390	73050 (72660)
RAMP C DITCH				
0+165.0	0+188.1	190	145	0 145
RAMP D DITCH				
0+167.6	0+185.0	170	130	0 130
TEMPORARY ACCESS ROAD (TO CONSTRUCT)				
5+075.0	5+658.1	2020	1515	1380 135
TEMPORARY ACCESS ROAD (TO REMOVE) *				
5+075.0	5+658.1	2200	1650	2020 (370)
TOTALS		6825	5125	159290 (154165)

* INCLUDES REMOVAL OF AGGREGATE SURFACE COURSE

SETTLEMENT PLATES

STATION	SIDE	EACH
FAP 310		
39+138	LT	1
39+199	LT	1
39+225	LT	1
RAMP D		
0+100	RT	1
TOTAL		4

EROSION CONTROL BLANKET

STATION TO STATION	SIDE	WIDTH	SQ M
FAP 310			
39+029	39+162	LT & RT	VAR 7015.9
39+157	39+279	LT & RT	VAR 6084.5
TOTAL			13100.4
USE			13101

INLET AND PIPE PROTECTION

STATION	SIDE	EACH
FAP 310		
39+225.0	RT	1
RAMP C		
0+313.2	RT	1
RAMP D		
0+084.6	RT	1
TEMPORARY ACCESS ROAD		
5+080.0	LT	1
5+485.0	RT	1
5+570.0	RT	1
5+650.0	RT	1
TOTAL		7

TREE REMOVAL, HECTARES

STATION TO STATION	SIDE	HA
FAP 310		
39+117.0	39+142.0	LT
39+147.0	39+345.0	LT & RT
TOTAL		1.95
USE		2.0

PERIMETER EROSION BARRIER

STATION TO STATION	SIDE	METER
FAP 310		
39+032	39+034	LT & RT
39+209	39+284	LT & RT
TEMPORARY ACCESS ROAD		
5+480	5+490	LT
5+565	5+575	LT
5+645	5+655	LT
TOTAL		245

AGGREGATE SURFACE COURSE, TYPE B

STATION TO STATION	SIDE	WIDTH	SQ M	M TON
TEMPORARY ACCESS ROAD				
5+075.0	5+605.3	LT & RT	7.2	3818.2
5+605.3	5+658.1	LT & RT	4.9-7.2	1909.1
TOTAL				2068.9
USE				2069

CONTROLLED LOW-STRENGTH MATERIAL

STATION	SIDE	DESCRIPTION	LENGTH	CU M
FAP 310				
39+158.3	LT	610 mm STEEL PIPE	22.1	6.4
TOTAL				6.4
USE				7

SEEDING SCHEDULE

STATION TO STATION	SIDE	WIDTH	SEEDING CLASS 2	NITROGEN FERTILIZER NUTRIENT	PHOSPHORUS FERTILIZER NUTRIENT	POTASSIUM FERTILIZER NUTRIENT
			HA	KG		
FAP 310						
39+020	39+180	LT & RT	175m	1.92	192	192
39+145	39+275	LT & RT	120m-160m	1.31	131	131
TEMPORARY ACCESS ROAD						
5+075	5+620	LT & RT	16m	0.93	93	93
TOTALS				4.16	416	416
USE				4.2	420	420

CULVERT SCHEDULE

STATION	SIDE	PIPE CULVERTS			END SECTIONS		
		TEMPORARY CLASS C TYPE 1 300MM	STEEL CASING BORED AND JACKED 1050MM	1200MM	RCCP TYPE 7 1500MM DOUBLE	STEEL 1050MM	1200MM
METER							
EACH							
FAP 310							
39+225.0	LT & RT						230.4
RAMP C							
0+330.0	RT			33.5			2
RAMP D							
0+064.0	RT		51.8				2
TEMPORARY ACCESS ROAD							
5+080.0	LT & RT	13.6					
5+485.0	LT & RT	14.5					
5+570.0	LT & RT	11.7					
5+650.0	LT & RT	11.7					
TOTALS		51.5	51.8	33.5	230.4	2	2
USE		51.5	52.0	33.5	230.5	2	2

PERIMETER EROSION BARRIER, MODIFIED

STATION TO STATION	SIDE	METER
FAP 310		
39+119	39+130	LT & RT
39+190	39+205	LT & RT
TOTAL		325

QC/QA CONCRETE SCHEDULE

PAY ITEM NUMBER	DESCRIPTION	PLAN QUANTITY	CONVERSION FACTOR	CU M
M5030350	CONCRETE STRUCTURES	cu m	n/a	X, X
M5030360	CONCRETE SUPERSTRUCTURE	cu m	n/a	X, X
MX030385	CONCRETE SLOPEWALL	sq m	0.100 cu m x sq m	X, X
M5930100	CONTROLLED LOW-STRENGTH MATERIAL	cu m	n/a	X, X
TOTAL				X, X

REVISIONS

NAME	DATE
Rev. Sheet	5-28-09

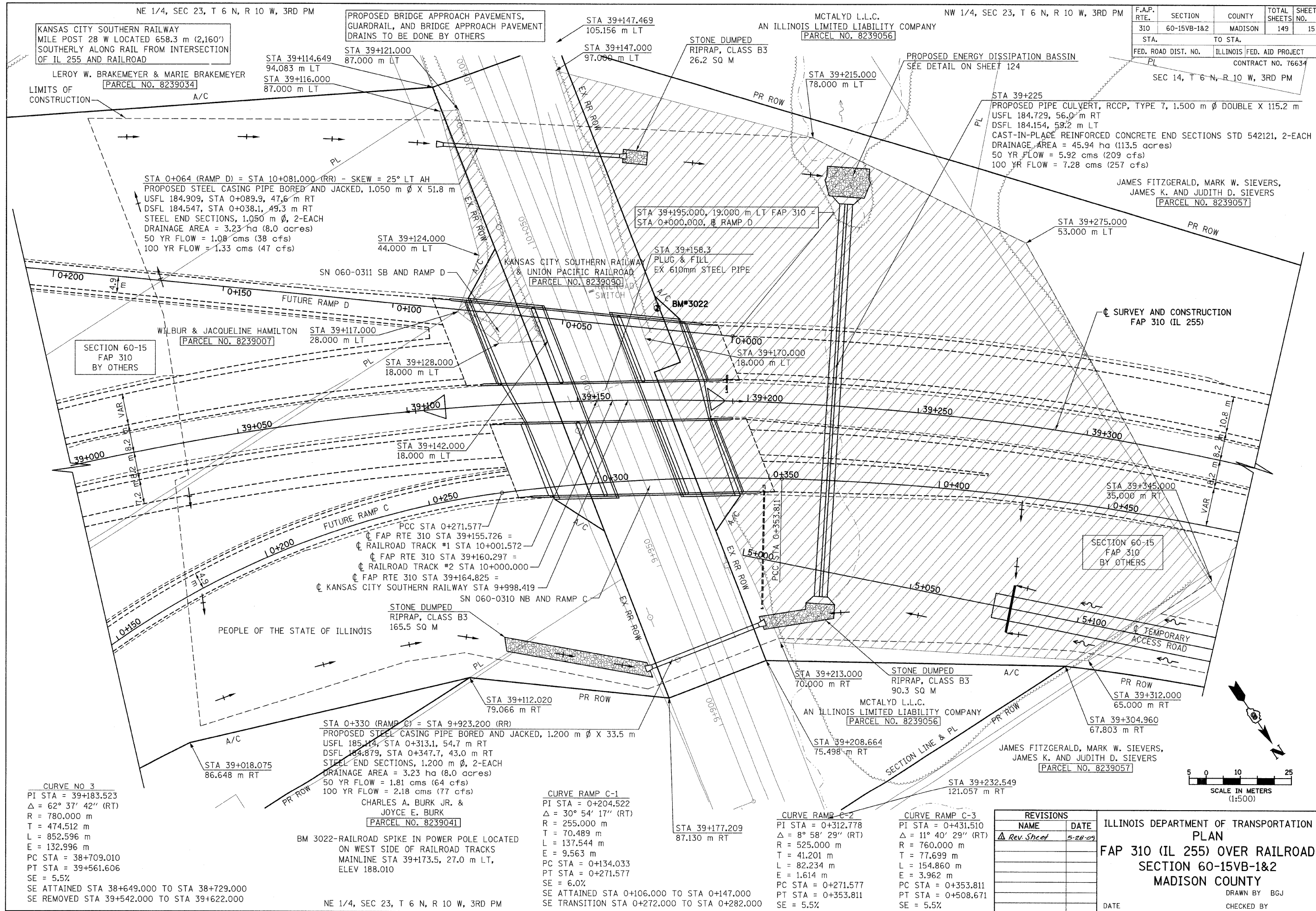
ILLINOIS DEPARTMENT OF TRANSPORTATION
SCHEDULES OF QUANTITIES
FAP 310 (IL 255)
SECTION 60-15VB-1 & 2
MADISON COUNTY

DRAWN BY EBB
CHECKED BY

DATE

XXXX

FILE



F.A.P. RTE.	SECTION	COUNTY	TOTAL SHEETS	SHEET NO.
310	60-15VB-1&2	MADISON	149	15
STA. TO STA.		ILLINOIS FED. AID PROJECT CONTRACT NO. 76634		
FED. ROAD DIST. NO.		SEC 14, T 6 N, R 10 W, 3RD PM		

KANSAS CITY SOUTHERN RAILWAY
MILE POST 28 W LOCATED 658.3 m (2,160')
SOUTHERLY ALONG RAIL FROM INTERSECTION
OF IL 255 AND RAILROAD

PROPOSED BRIDGE APPROACH PAVEMENTS,
GUARDRAIL, AND BRIDGE APPROACH PAVEMENT
DRAINS TO BE DONE BY OTHERS

MCTALYD L.L.C.
AN ILLINOIS LIMITED LIABILITY COMPANY
[PARCEL NO. 8239056]

LERoy W. BRAKEMEYER & MARIE BRAKEMEYER
[PARCEL NO. 8239034]

STA 0+064 (RAMP D) = STA 10+081.000 (RR) - SKEW = 25° LT AH
PROPOSED STEEL CASING PIPE BORED AND JACKED, 1.050 m Ø X 51.8 m
USFL 184.909, STA 0+089.9, 47.6 m RT
DSFL 184.547, STA 0+038.1, 49.3 m RT
STEEL END SECTIONS, 1.050 m Ø, 2-EACH
DRAINAGE AREA = 3.23 ha (8.0 acres)
50 YR FLOW = 1.08 cms (38 cfs)
100 YR FLOW = 1.33 cms (47 cfs)

STA 39+195.000, 19.000 m LT FAP 310 =
STA 0+000.000, RAMP D

STA 39+225
PROPOSED PIPE CULVERT, RCCP, TYPE 7, 1.500 m Ø DOUBLE X 115.2 m
USFL 184.729, 56.0 m RT
DSFL 184.154, 59.2 m LT
CAST-IN-PLACE REINFORCED CONCRETE END SECTIONS STD 542121, 2-EACH
DRAINAGE AREA = 45.94 ha (113.5 acres)
50 YR FLOW = 5.92 cms (209 cfs)
100 YR FLOW = 7.28 cms (257 cfs)

JAMES FITZGERALD, MARK W. SIEVERS,
JAMES K. AND JUDITH D. SIEVERS
[PARCEL NO. 8239057]

SECTION 60-15
FAP 310
BY OTHERS

WILBUR & JACQUELINE HAMILTON
[PARCEL NO. 8239007]

SECTION 60-15
FAP 310
BY OTHERS

PCC STA 0+271.577
FAP RTE 310 STA 39+155.726 =
RAILROAD TRACK #1 STA 10+001.572
FAP RTE 310 STA 39+160.297 =
RAILROAD TRACK #2 STA 10+000.000
FAP RTE 310 STA 39+164.825 =
KANSAS CITY SOUTHERN RAILWAY STA 9+998.419

STONE DUMPED
RIPRAP, CLASS B3
165.5 SQ M

STONE DUMPED
RIPRAP, CLASS B3
90.3 SQ M

CURVE NO 3
PI STA = 39+183.523
Δ = 62° 37' 42" (RT)
R = 780.000 m
T = 474.512 m
L = 852.596 m
E = 132.996 m
PC STA = 38+709.010
PT STA = 39+561.606
SE = 5.5%
SE ATTAINED STA 38+649.000 TO STA 38+729.000
SE REMOVED STA 39+542.000 TO STA 39+622.000

STA 0+330 (RAMP C) = STA 9+923.200 (RR)
PROPOSED STEEL CASING PIPE BORED AND JACKED, 1.200 m Ø X 33.5 m
USFL 185.114, STA 0+313.1, 54.7 m RT
DSFL 184.879, STA 0+347.7, 43.0 m RT
STEEL END SECTIONS, 1.200 m Ø, 2-EACH
DRAINAGE AREA = 3.23 ha (8.0 acres)
50 YR FLOW = 1.81 cms (64 cfs)
100 YR FLOW = 2.18 cms (77 cfs)
CHARLES A. BURK JR. &
JOYCE E. BURK
[PARCEL NO. 8239041]

BM 3022-RAILROAD SPIKE IN POWER POLE LOCATED
ON WEST SIDE OF RAILROAD TRACKS
MAINLINE STA 39+173.5, 27.0 m LT,
ELEV 188.010

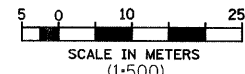
CURVE RAMP C-1
PI STA = 0+204.522
Δ = 30° 54' 17" (RT)
R = 255.000 m
T = 70.489 m
L = 137.544 m
E = 9.563 m
PC STA = 0+134.033
PT STA = 0+271.577
SE = 6.0%
SE ATTAINED STA 0+106.000 TO STA 0+147.000
SE TRANSITION STA 0+272.000 TO STA 0+282.000

CURVE RAMP C-2
PI STA = 0+312.778
Δ = 8° 58' 29" (RT)
R = 525.000 m
T = 41.201 m
L = 82.234 m
E = 1.614 m
PC STA = 0+271.577
PT STA = 0+353.811
SE = 5.5%

CURVE RAMP C-3
PI STA = 0+431.510
Δ = 11° 40' 29" (RT)
R = 760.000 m
T = 77.699 m
L = 154.860 m
E = 3.962 m
PC STA = 0+353.811
PT STA = 0+508.671
SE = 5.5%

REVISIONS	
NAME	DATE
Δ Rev. Sheet	5-28-09

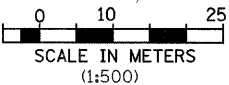
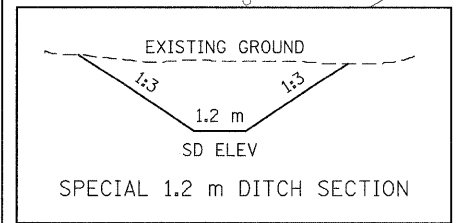
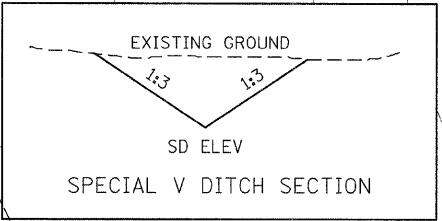
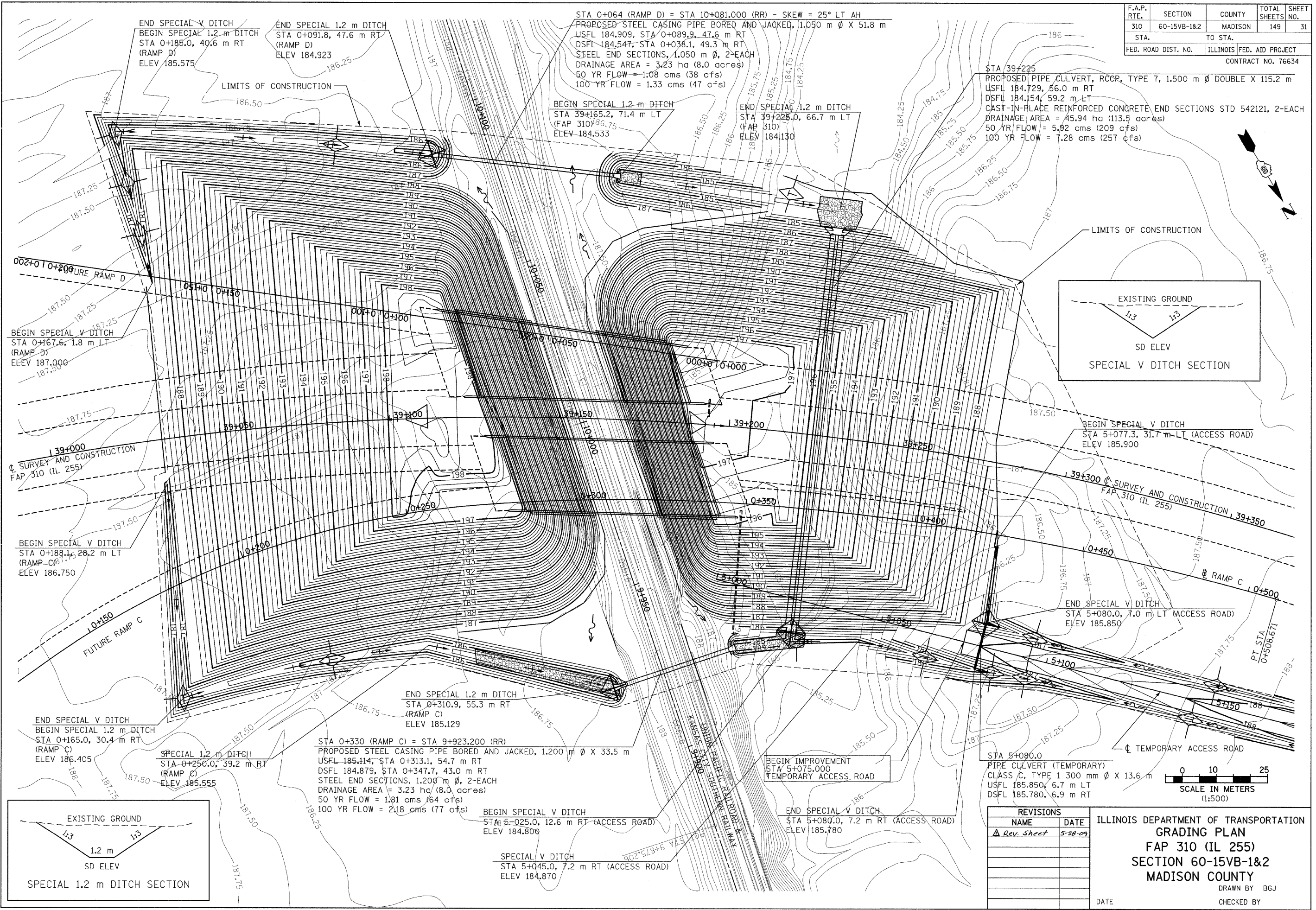
ILLINOIS DEPARTMENT OF TRANSPORTATION
PLAN
FAP 310 (IL 255) OVER RAILROAD
SECTION 60-15VB-1&2
MADISON COUNTY
DRAWN BY B.G.J.
CHECKED BY
DATE



IL 255 (FAP 310), STA 39+000 TO STA 39+350

FILE\$

F.A.P. RTE.	SECTION	COUNTY	TOTAL SHEETS	SHEET NO.
310	60-15VB-1&2	MADISON	149	31
STA.		TO STA.		
FED. ROAD DIST. NO.		ILLINOIS FED. AID PROJECT		
CONTRACT NO. 76634				



REVISIONS	
NAME	DATE
Rev. Sheet	5-28-09

ILLINOIS DEPARTMENT OF TRANSPORTATION
GRADING PLAN
FAP 310 (IL 255)
SECTION 60-15VB-1&2
MADISON COUNTY
 DRAWN BY B.G.J.
 CHECKED BY
 DATE

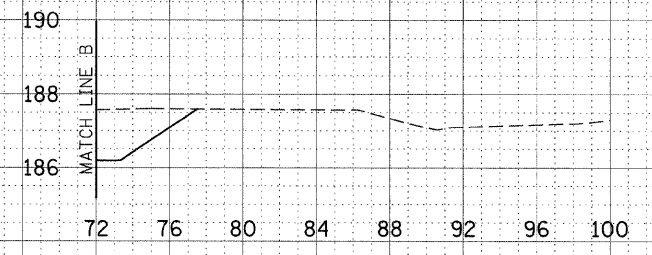
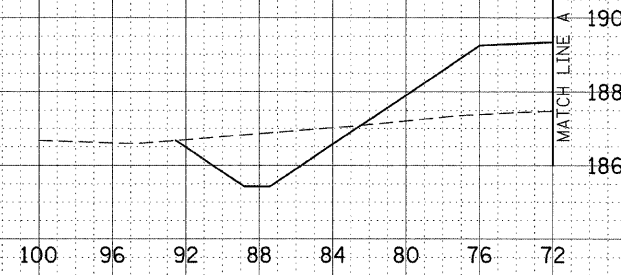
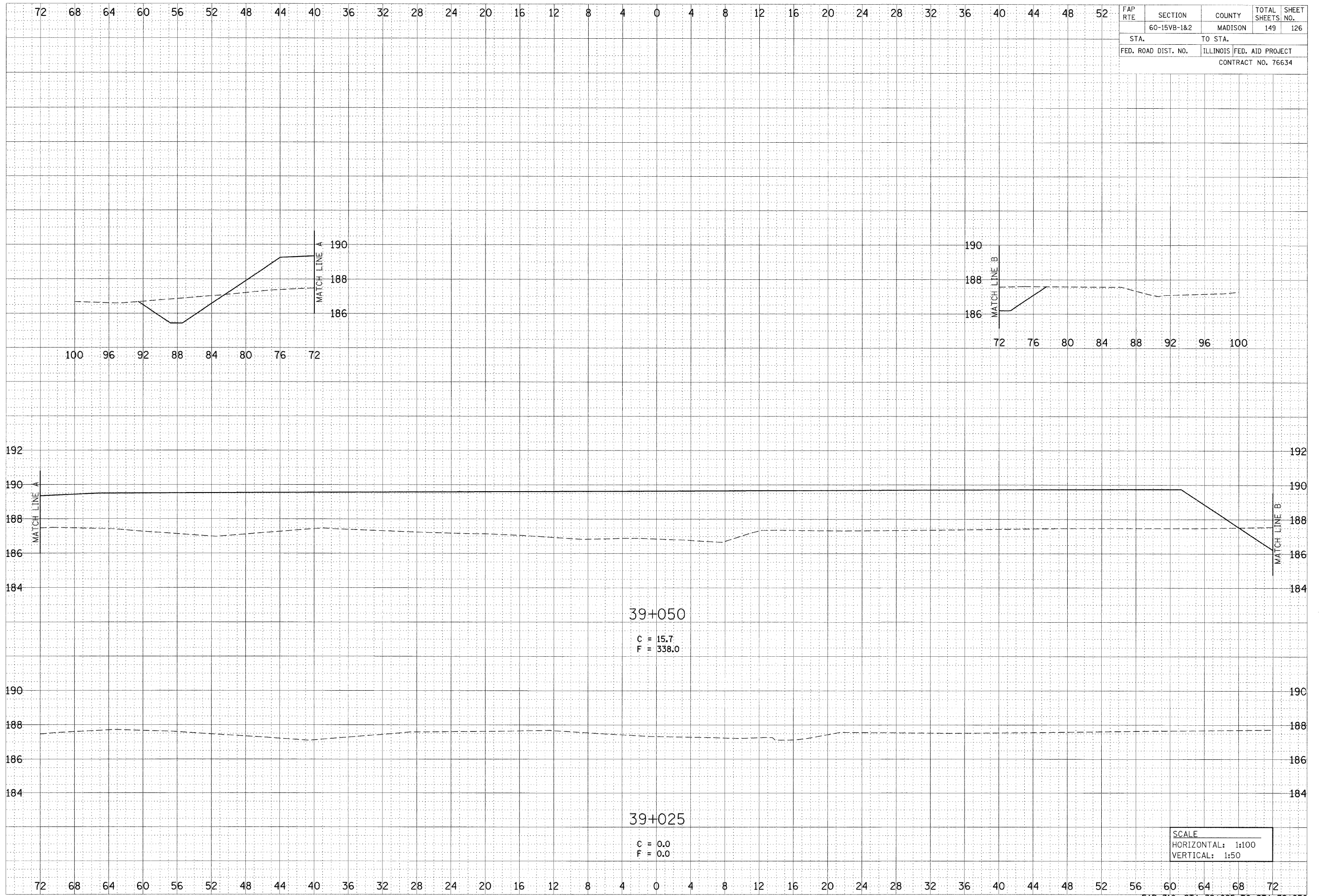
FILE\$

XXXX\$

FAP RTE	SECTION	COUNTY	TOTAL SHEETS	SHEET NO.
	60-15VB-1&2	MADISON	149	126
STA.		TO STA.		
FED. ROAD DIST. NO.	ILLINOIS	FED. AID PROJECT		
CONTRACT NO. 76634				

FINAL SURVEY	SURVEYED	BY	DATE
NOTE BOOK NO.	PLOTTED		
	AREAS		
	CHECKED		

ORIGINAL SURVEY	SURVEYED	BY	DATE
NOTE BOOK NO.	PLOTTED		
	AREAS		
	CHECKED		



39+050
 C = 15.7
 F = 338.0

39+025
 C = 0.0
 F = 0.0

SCALE
 HORIZONTAL: 1:100
 VERTICAL: 1:50

FAP 310, STA 39+025 TO STA 39+050

Rev. Sheet 5-28-09

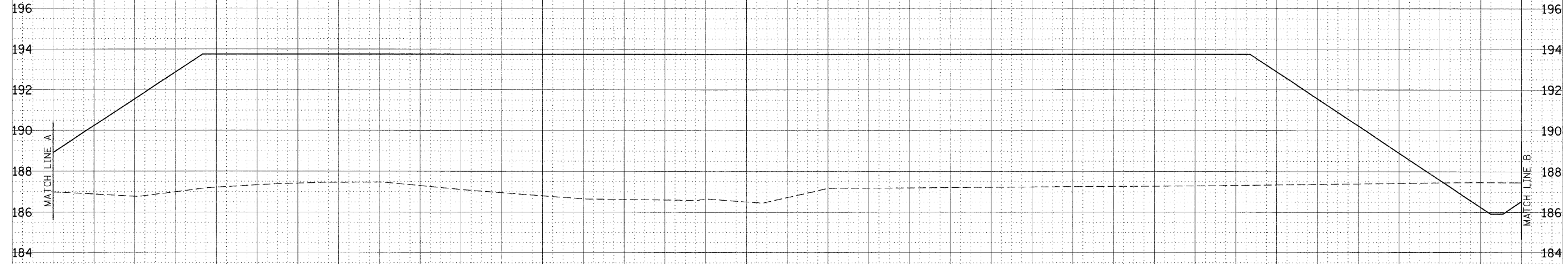
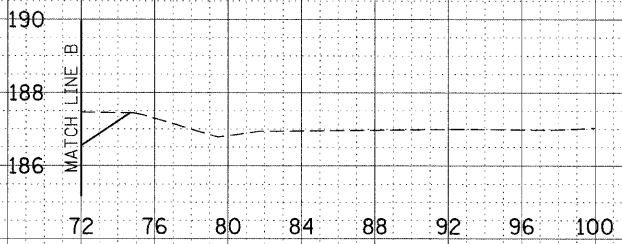
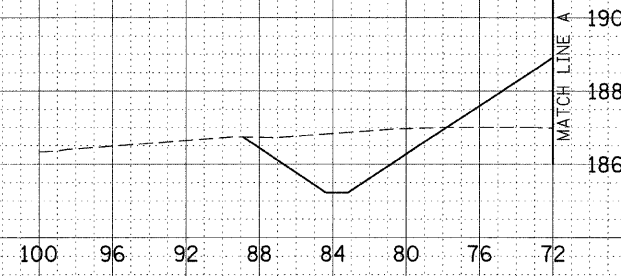
FILE\$

FAP RTE	SECTION	COUNTY	TOTAL SHEETS	SHEET NO.
	60-15VB-1&2	MADISON	149	127
STA.		TO STA.		
FED. ROAD DIST. NO.		ILLINOIS FED. AID PROJECT CONTRACT NO. 76634		

DATE	BY
SURVEYED	
PLOTTED	
CHECKED	
AREAS CHECKED	
NO.	

DATE	BY
ORIGINAL SURVEY	
PLOTTED	
CHECKED	
AREAS CHECKED	
NO.	

72 68 64 60 56 52 48 44 40 36 32 28 24 20 16 12 8 4 0 4 8 12 16 20 24 28 32 36 40 44 48 52



39+075
 C = 18.8
 F = 815.7

SCALE
 HORIZONTAL: 1:100
 VERTICAL: 1:50

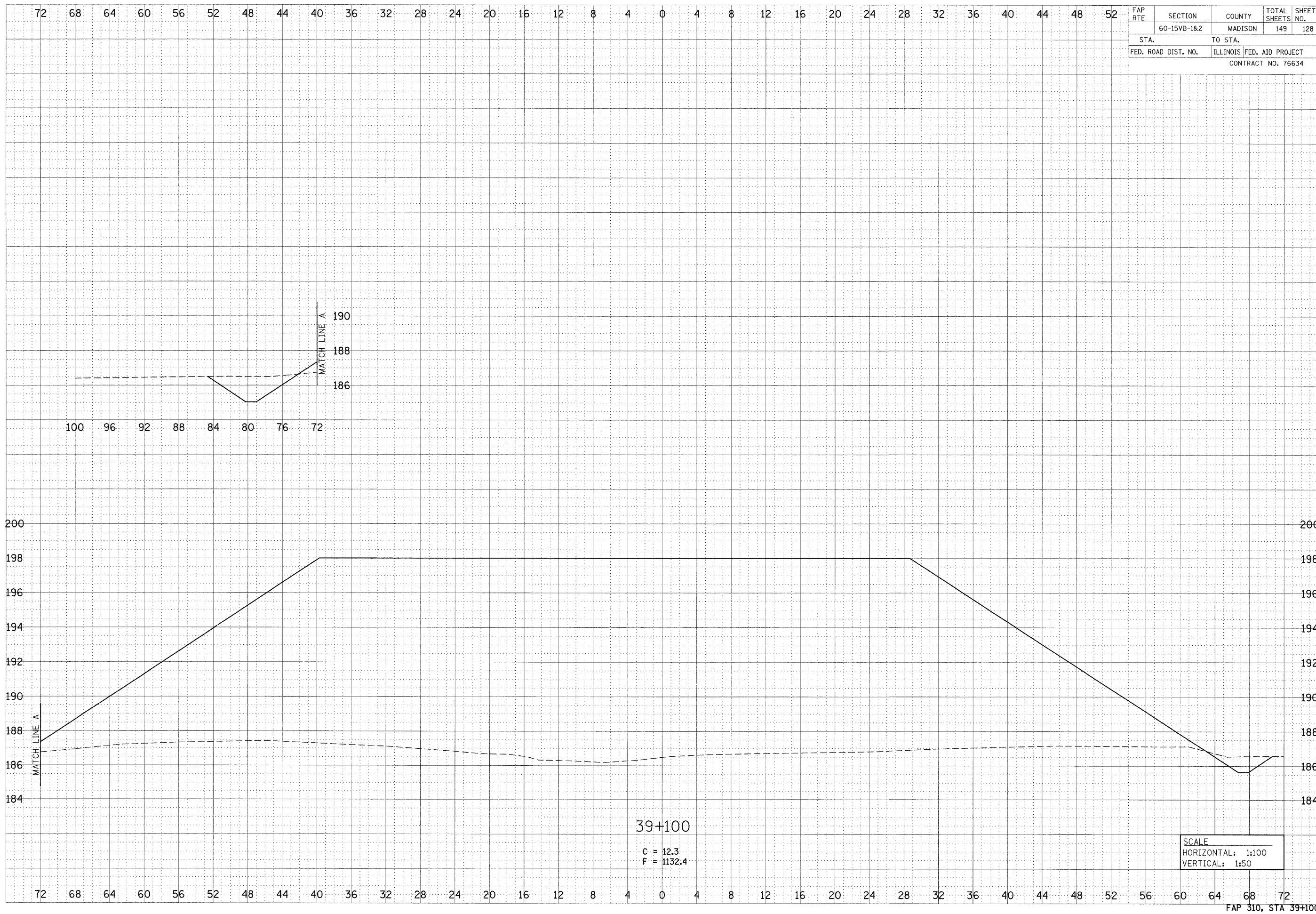
72 68 64 60 56 52 48 44 40 36 32 28 24 20 16 12 8 4 0 4 8 12 16 20 24 28 32 36 40 44 48 52 56 60 64 68 72

\$XXX\$

DATE	BY
ORIGINAL SURVEY NOTE BOOK NO.	BURVEIVED PLOTTED AREAS CHECKED

DATE	BY
ORIGINAL SURVEY NOTE BOOK NO.	BURVEIVED PLOTTED AREAS CHECKED

FAP RTE	SECTION	COUNTY	TOTAL SHEETS	SHEET NO.
	60-15VB-1&2	MADISON	149	128
STA.		TO STA.		
FED. ROAD DIST. NO.		ILLINOIS	FED. AID PROJECT	
CONTRACT NO. 76634				



SCALE
 HORIZONTAL: 1:100
 VERTICAL: 1:50

39+100

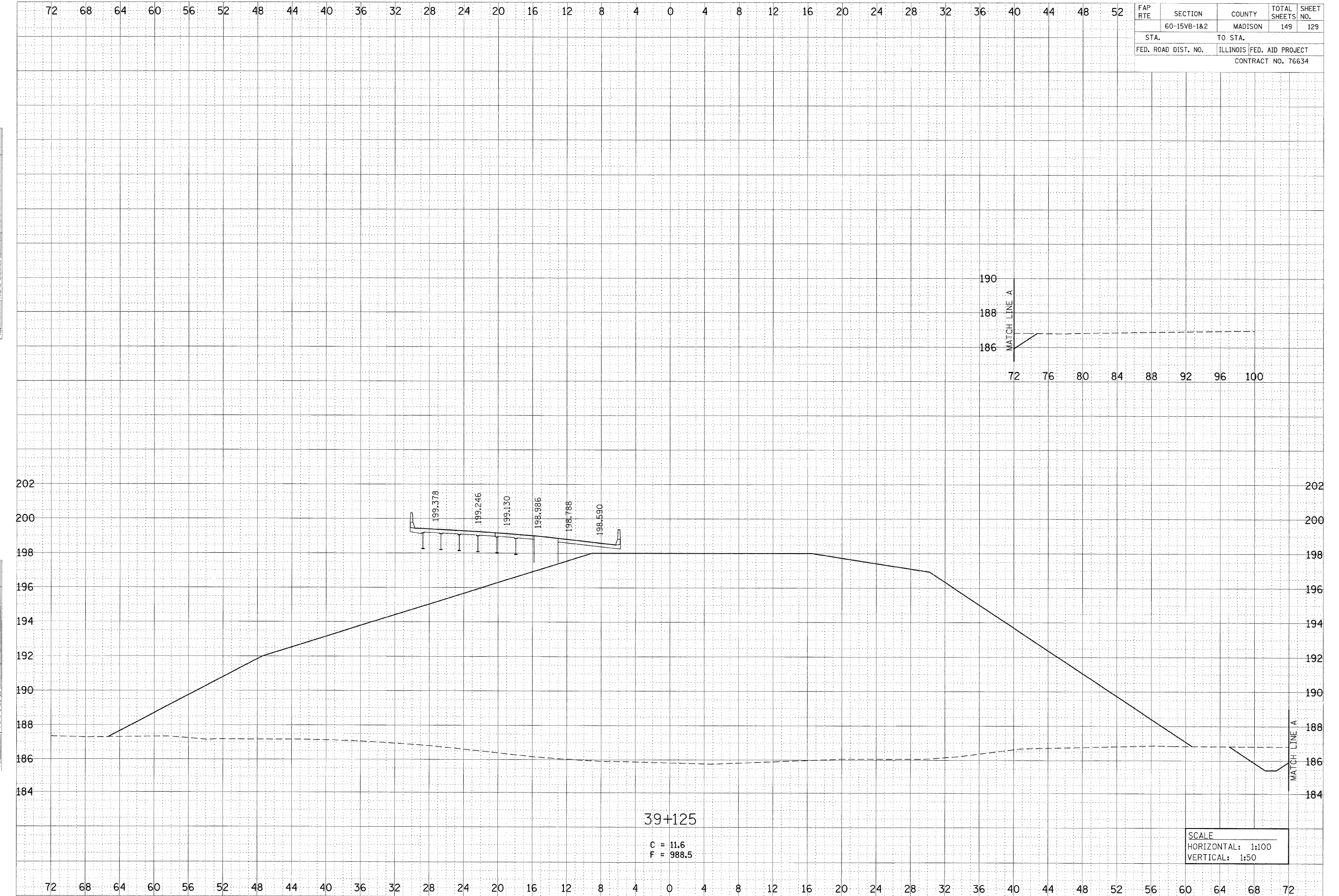
C = 12.3
 F = 1132.4

\$FILE\$

XXXX\$

FINAL SURVEY	SURVEYED	BY	DATE
NOTE BOOK NO.	PLOTTED		
	AREAS		
	CHECKED		

ORIGINAL SURVEY	SURVEYED	BY	DATE
NOTE BOOK NO.	PLOTTED		
	AREAS		
	CHECKED		



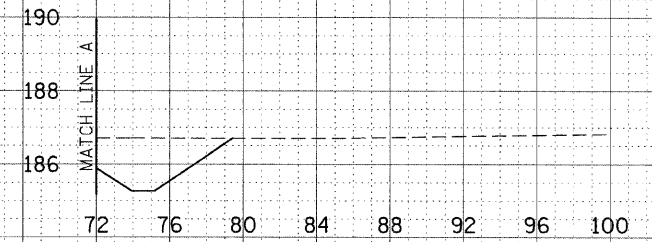
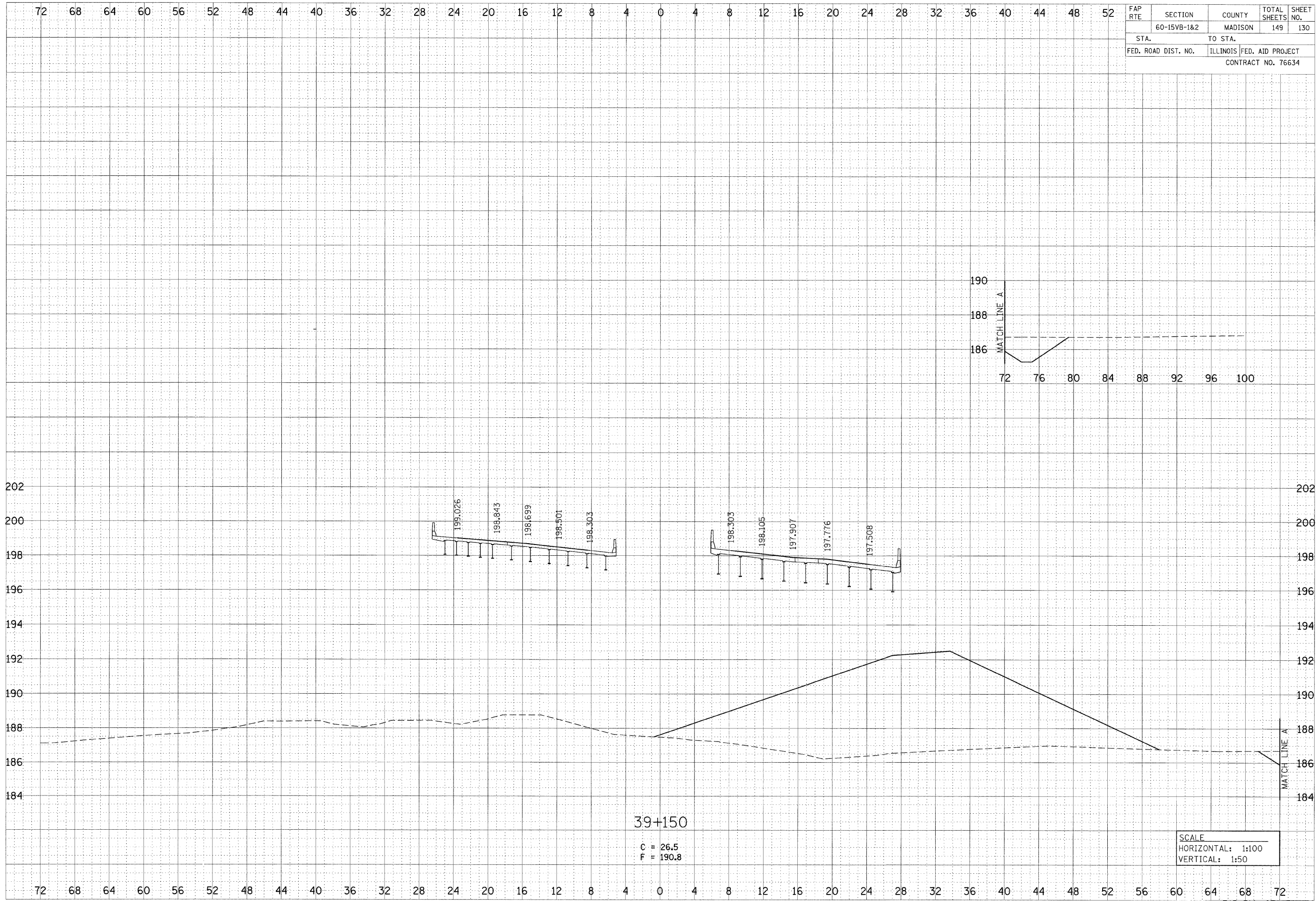
FAP RTE	SECTION	COUNTY	TOTAL SHEETS	SHEET NO.
	60-15VB-1&2	MADISON	149	129
STA.	TO STA.			
FED. ROAD DIST. NO.	ILLINOIS	FED. AID PROJECT	CONTRACT NO. 76634	

\$FILE\$

FAP 310, STA 39+125

Rev. Sheet 52809

XXXX\$



39+150
 C = 26.5
 F = 190.8

SCALE
 HORIZONTAL: 1:100
 VERTICAL: 1:50

FAP RTE	SECTION	COUNTY	TOTAL SHEETS	SHEET NO.
	60-15VB-1&2	MADISON	149	130
STA.		TO STA.		
FED. ROAD DIST. NO.		ILLINOIS	FED. AID PROJECT	
CONTRACT NO. 76634				

FINAL SURVEY NOTE BOOK NO.	SURVEYED PLOTTED MAP DATE AREAS CHECKED	BY	DATE

ORIGINAL SURVEY NOTE BOOK NO.	SURVEYED PLOTTED MAP DATE AREAS CHECKED	BY	DATE

FILE\$

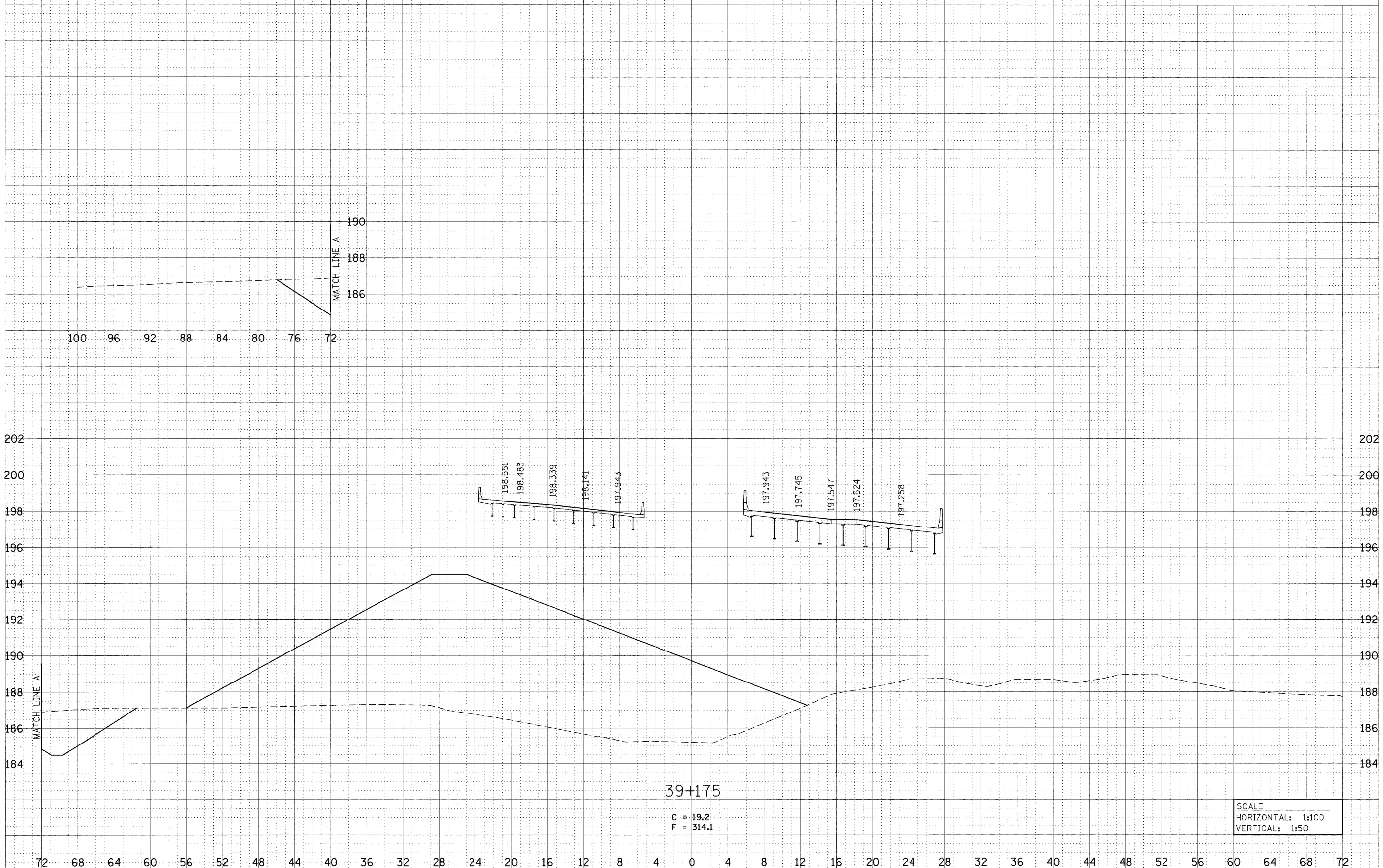
FAP 310, STA 39+150

XXXX\$

FAP RTE	SECTION	COUNTY	TOTAL SHEETS	SHEET NO.
	60-15VB-1&2	MADISON	149	131
STA.		TO STA.		
FED. ROAD DIST. NO.		ILLINOIS	FED. AID PROJECT	
CONTRACT NO. 76634				

FINN	SURVEYED	DATE
	PLOTTED	
	DATE	
	AREAS CHECKED	

ORIGINAL	SURVEYED	DATE
	PLOTTED	
	DATE	
	AREAS CHECKED	



39+175
 C = 19.2
 F = 314.1

SCALE
 HORIZONTAL: 1:100
 VERTICAL: 1:50

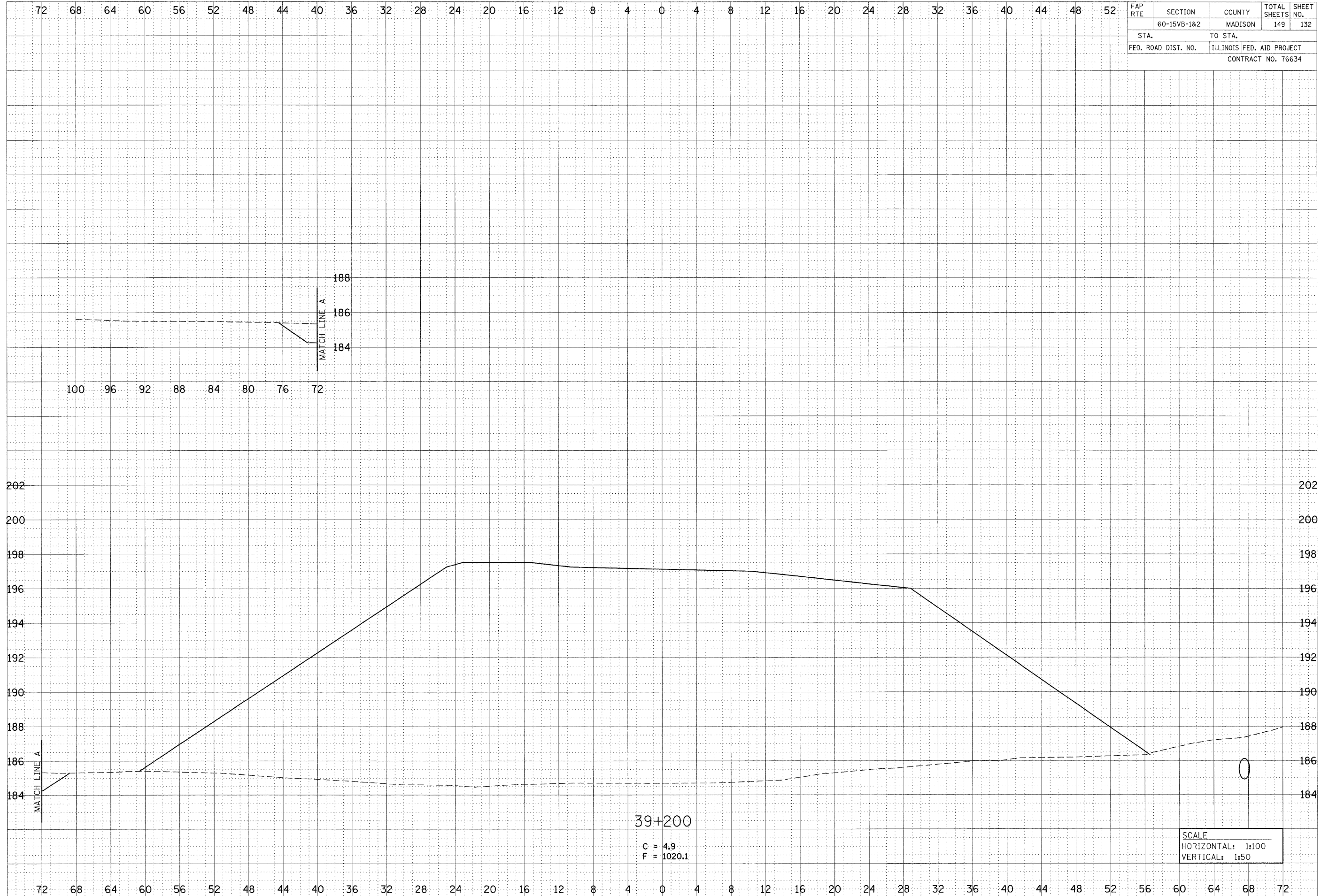
FAP 310, STA 39+175

\$XXX\$

FINAL SURVEY	SURVEYED	BY	DATE
NOTE BOOK	PLOTTED		
NO.	TEMPLATE		
	AREAS CHECKED		

ORIGINAL SURVEY	SURVEYED	BY	DATE
NOTE BOOK	PLOTTED		
NO.	TEMPLATE		
	AREAS CHECKED		

FAP RTE	SECTION	COUNTY	TOTAL SHEETS	SHEET NO.
	60-15VB-1&2	MADISON	149	132
STA.		TO STA.		
FED. ROAD DIST. NO.		ILLINOIS FED. AID PROJECT		
		CONTRACT NO. 76634		



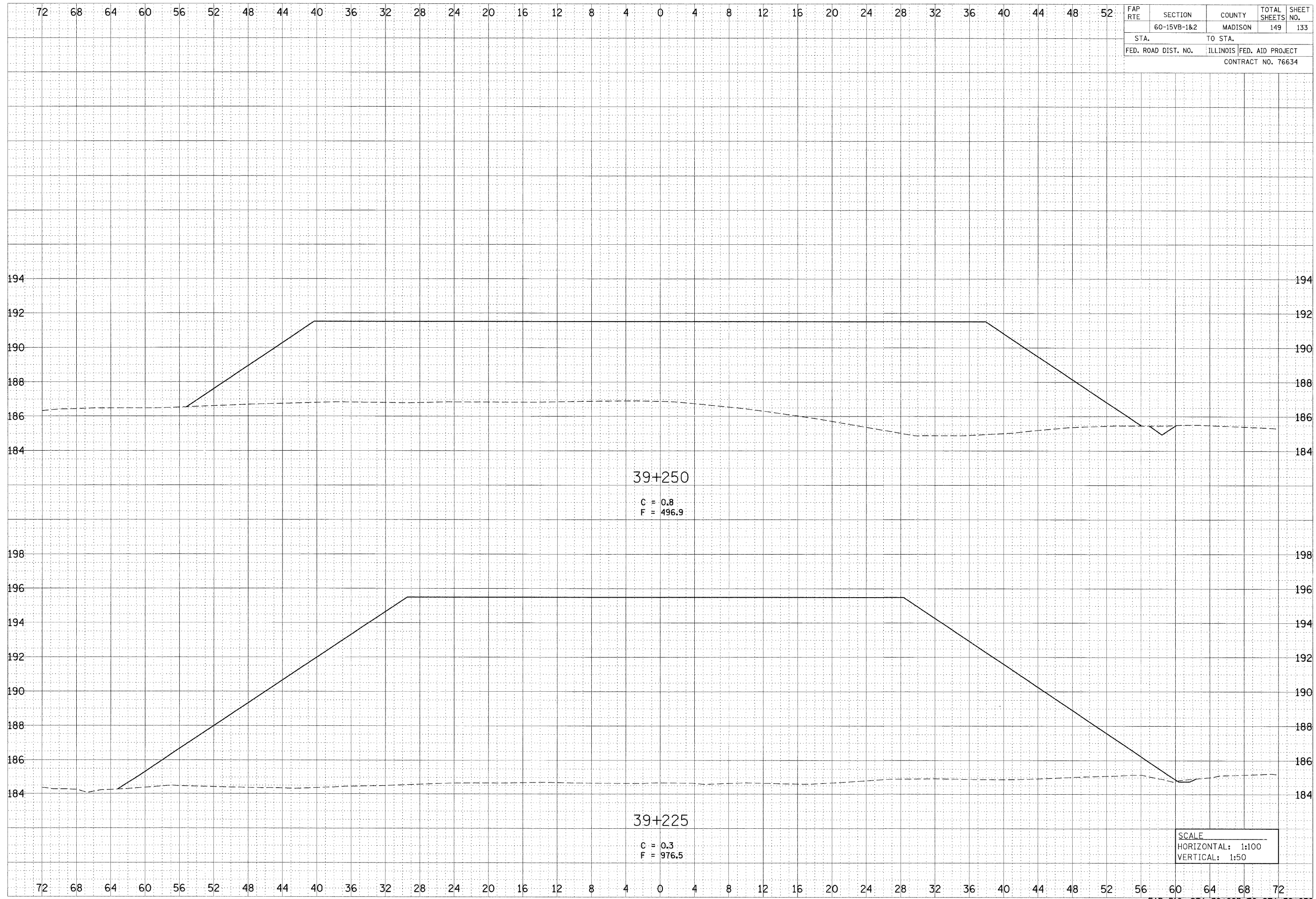
\$FILE\$

\$XXX\$

FINAL SURVEY	SURVEYED	BY	DATE
NOTE BOOK NO.	PLOTTED TEMPLATE		
	AREAS CHECKED		

ORIGINAL SURVEY	SURVEYED	BY	DATE
NOTE BOOK NO.	PLOTTED TEMPLATE		
	AREAS CHECKED		

FAP RTE	SECTION	COUNTY	TOTAL SHEETS	SHEET NO.
	60-15VB-1&2	MADISON	149	133
STA.		TO STA.		
FED. ROAD DIST. NO.		ILLINOIS FED. AID PROJECT CONTRACT NO. 76634		



SCALE
 HORIZONTAL: 1:100
 VERTICAL: 1:50

\$FILE\$

FAP 310, STA 39+225 TO STA 39+250

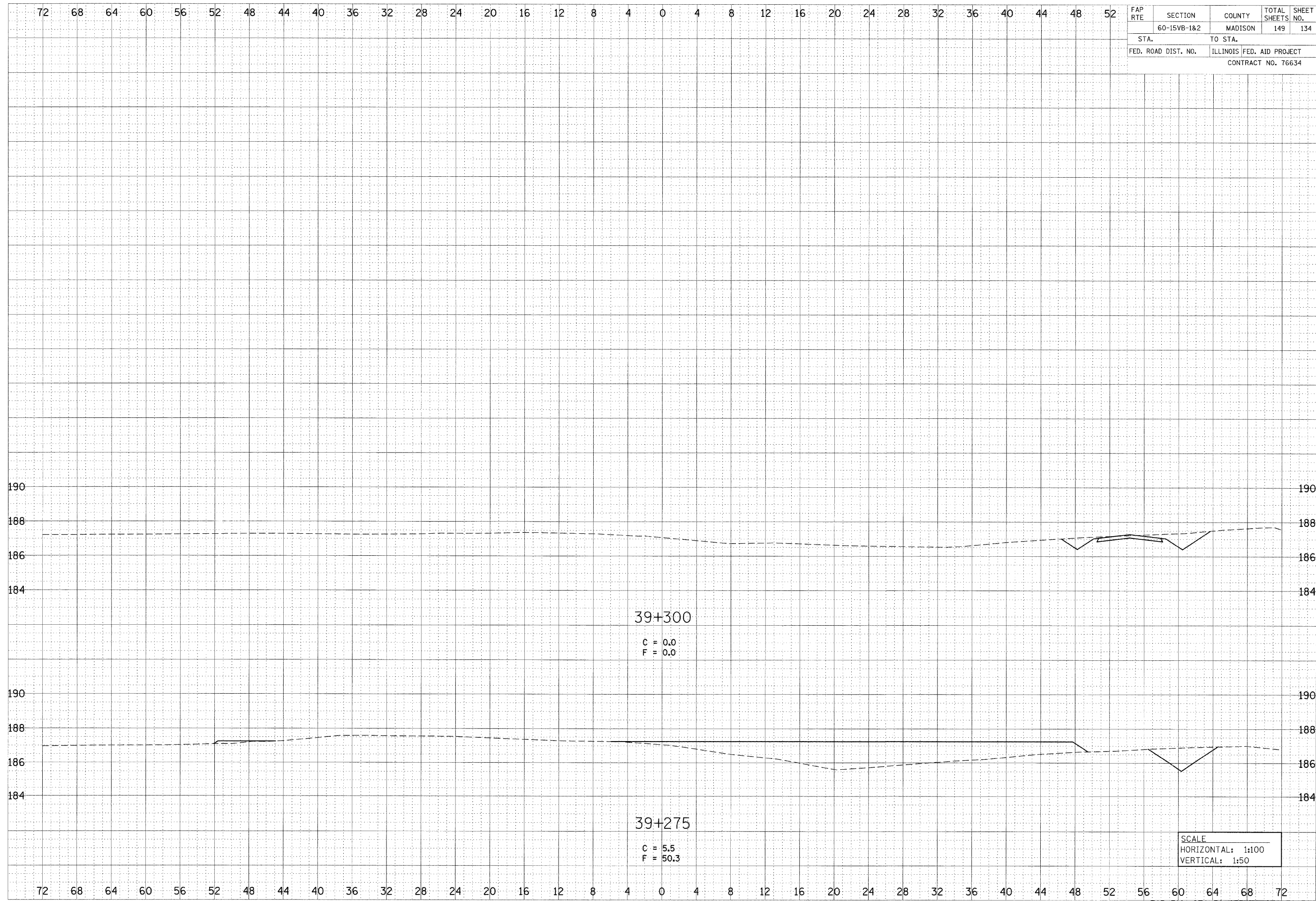
Rev. Sheet 5-28-09

\$XXX\$

FINAL SURVEY NOTE BOOK NO.	SURVEY PLOTTED TEMPLATE AREAS CHECKED	BY	DATE

ORIGINAL SURVEY NOTE BOOK NO.	SURVEY PLOTTED TEMPLATE AREAS CHECKED	BY	DATE

FAP RTE	SECTION	COUNTY	TOTAL SHEETS	SHEET NO.
	60-15VB-1&2	MADISON	149	134
STA.	TO STA.			
FED. ROAD DIST. NO.	ILLINOIS FED. AID PROJECT			
CONTRACT NO. 76634				



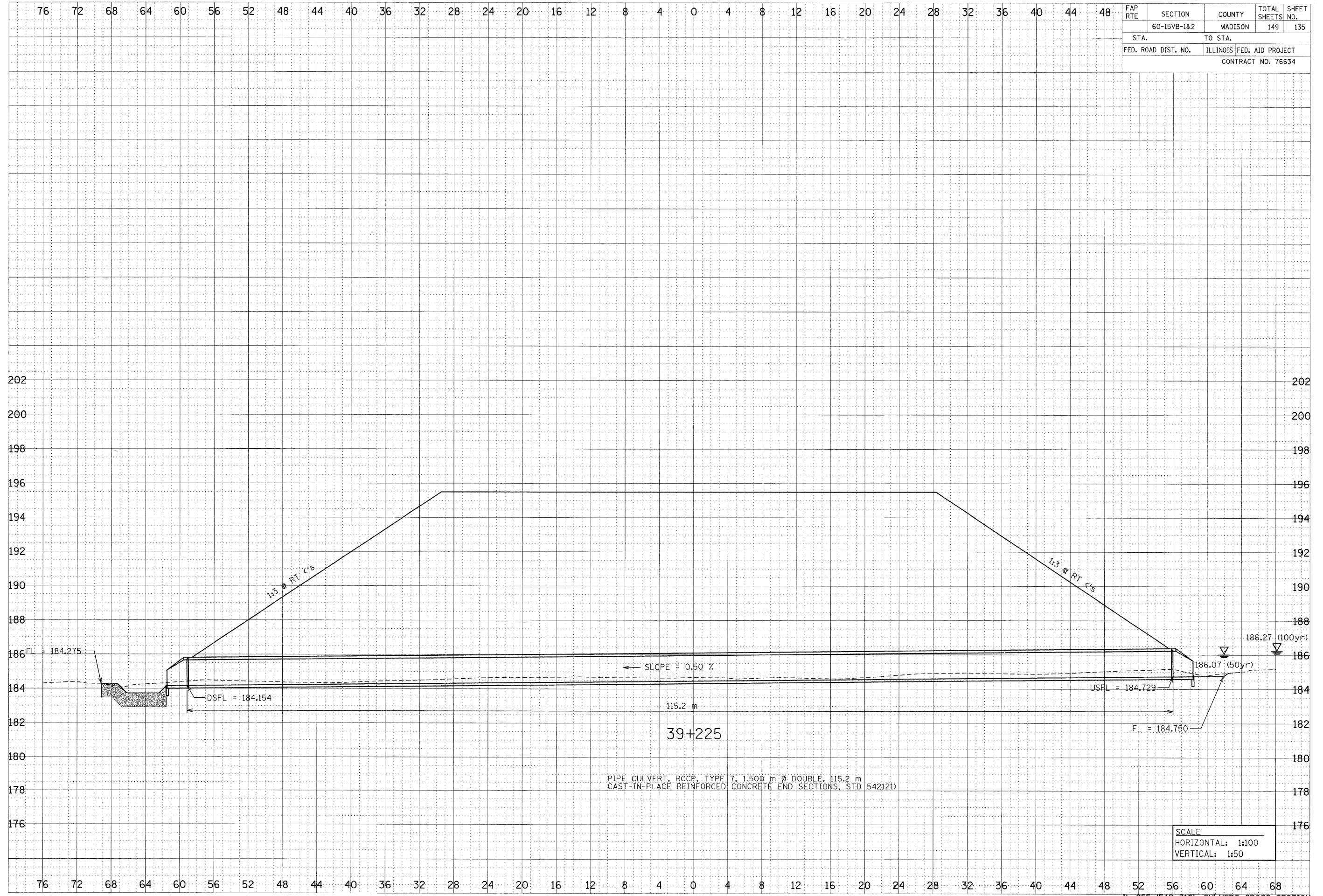
\$FILE\$

\$XXX\$

FINAL SURVEY NOTE BOOK NO.	SURVEYED PLOTTED AREAS CHECKED	BY	DATE

ORIGINAL SURVEY NOTE BOOK NO.	SURVEYED PLOTTED AREAS CHECKED	BY	DATE

FAP RTE	SECTION	COUNTY	TOTAL SHEETS	SHEET NO.
	60-15VB-1&2	MADISON	149	135
STA.	TO STA.			
FED. ROAD DIST. NO.	ILLINOIS	FED. AID PROJECT	CONTRACT NO. 76634	



\$FILE\$

IL 255 (FAP 310), CULVERT CROSS SECTION

Rev. Sheet 5-28-09

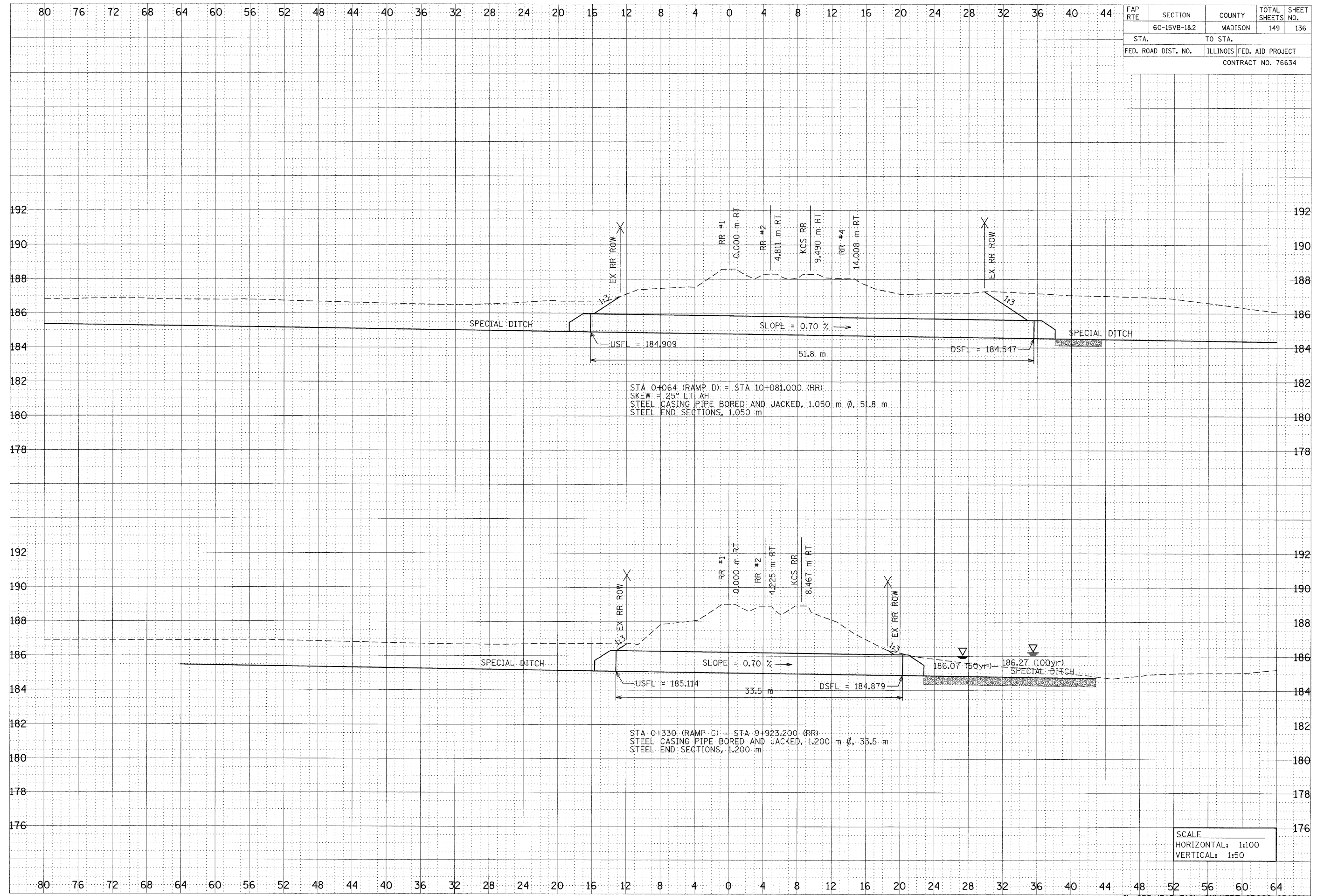
XXXXX

FILE

FAP RTE	SECTION	COUNTY	TOTAL SHEETS	SHEET NO.
	60-15VB-1&2	MADISON	149	136
STA.	TO STA.			
FED. ROAD DIST. NO.	ILLINOIS	FED. AID PROJECT	CONTRACT NO. 76634	

BY	DATE
SURVEYED	
PLOTTED	
NOTE BOOK	
AREAS CHECKED	
NO.	

BY	DATE
SURVEYED	
PLOTTED	
NOTE BOOK	
AREAS CHECKED	
NO.	



STA 0+064 (RAMP D) = STA 10+081.000 (RR)
 SKEW = 25° L.T. A.H.
 STEEL CASING PIPE BORED AND JACKED, 1.050 m Ø, 51.8 m
 STEEL END SECTIONS, 1.050 m

STA 0+330 (RAMP C) = STA 9+923.200 (RR)
 STEEL CASING PIPE BORED AND JACKED, 1.200 m Ø, 33.5 m
 STEEL END SECTIONS, 1.200 m

SCALE
 HORIZONTAL: 1:100
 VERTICAL: 1:50