

FAP ROUTE	SECTION	COUNTY	TOTAL SHEETS	SHEET NO
70		MADISON	420	32

CONTRACT NO.: 76709
60-10K-1, 60-10HB



DATE	BY

PLAN
 REVISIONS
 CHECKED
 ALIGNED
 PLOTTED
 DATE
 FILE NAME
 NO.

PROP. CURVE WFRCUR-1
 PI STA. = 11+99.84
 $\Delta = 49^\circ 50' 42''$ (LT)
 D = 20° 50' 05"
 R = 275.00'
 T = 127.78'
 L = 239.24'
 E = 28.24'
 $e = 8.00\%$
 T.R. = 41'
 S.E. RUN = 219'
 P.C. STA = 10+72.06
 P.T. STA = 13+11.30

PROP. CURVE WFRCUR-2
 PI STA. = 20+13.14
 $\Delta = 107^\circ 00' 42''$ (RT)
 D = 19° 05' 55"
 R = 300.00'
 T = 405.51'
 L = 560.31'
 E = 204.42'
 $e = N.C.$
 T.R. = N/A
 S.E. RUN = N/A
 P.C. STA = 16+07.63
 P.T. STA = 21+67.94

PROP. CURVE 162PR1
 PI STA. = 493+92.86
 $\Delta = 28^\circ 58' 09''$ (LT)
 D = 4° 07' 29"
 R = 1,389.08'
 T = 358.84'
 L = 702.33'
 E = 45.60'
 $e = N.C.$
 T.R. = N/A
 S.E. RUN = N/A
 P.C. STA = 490+34.02
 P.T. STA = 497+36.34

PROP. CURVE WFRCUR-3
 PI STA. = 25+37.76
 $\Delta = 55^\circ 56' 38''$ (LT)
 D = 16° 22' 13"
 R = 350.00'
 T = 185.88'
 L = 341.74'
 E = 46.30'
 $e = N.C.$
 T.R. = N/A
 S.E. RUN = N/A
 P.C. STA = 23+51.88
 P.T. STA = 26+93.63

PROP. CURVE RAMP-D1
 PI STA. = 20+75.10
 $\Delta = 6^\circ 24' 48''$ (RT)
 D = 3° 49' 11"
 R = 1,500.00'
 T = 84.04'
 L = 167.90'
 E = 2.35'
 $e = 4.90\%$
 T.R. = N/A
 S.E. RUN = 150'
 P.C. STA = 19+91.06
 P.T. STA = 21+58.96

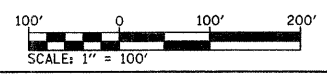
PROP. CURVE EFR-1
 PI STA. = 13+71.04
 $\Delta = 3^\circ 02' 40''$ (RT)
 D = 2° 51' 53"
 R = 2,000.00'
 T = 53.15'
 L = 106.27'
 E = 0.71'
 $e = N.C.$
 T.R. = N/A
 S.E. RUN = N/A
 P.C. STA = 13+17.89
 P.T. STA = 14+24.16

PROP. CURVE RAMP-C1
 PI STA. = 18+66.40
 $\Delta = 3^\circ 40' 49''$ (RT)
 D = 3° 49' 11"
 R = 1,500.00'
 T = 48.19'
 L = 96.35'
 E = 0.77'
 $e = N.C.$
 T.R. = N/A
 S.E. RUN = N/A
 P.C. STA = 18+18.21
 P.T. STA = 19+14.56

PROP. CURVE EFR-2
 PI STA. = 25+68.57
 $\Delta = 45^\circ 16' 03''$ (RT)
 D = 4° 24' 27"
 R = 1,300.00'
 T = 542.04'
 L = 1,027.09'
 E = 108.48'
 $e = N.C.$
 T.R. = N/A
 S.E. RUN = N/A
 P.C. STA = 20+26.54
 P.T. STA = 30+53.62

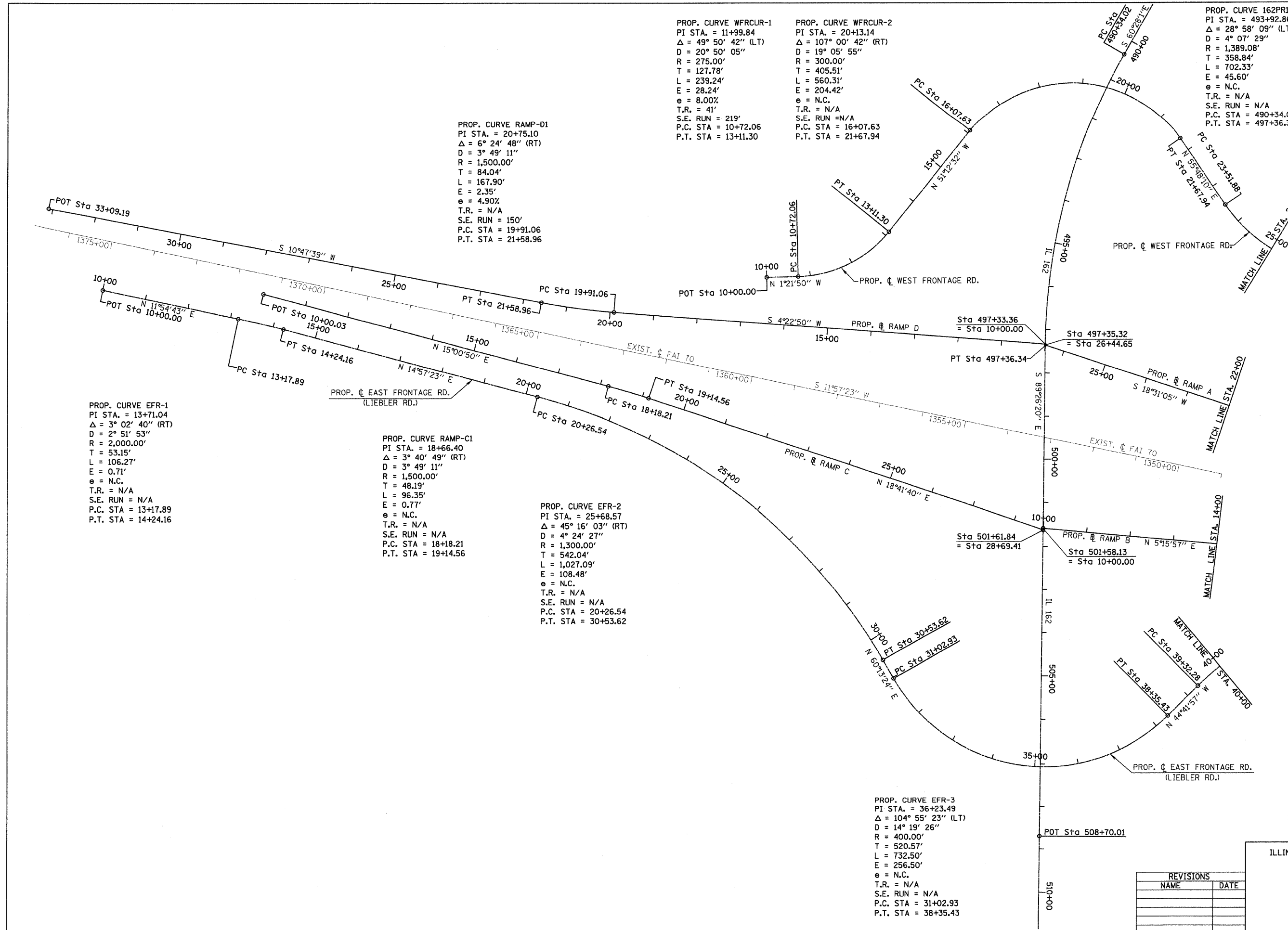
PROP. CURVE EFR-3
 PI STA. = 36+23.49
 $\Delta = 104^\circ 55' 23''$ (LT)
 D = 14° 19' 26"
 R = 400.00'
 T = 520.57'
 L = 732.50'
 E = 256.50'
 $e = N.C.$
 T.R. = N/A
 S.E. RUN = N/A
 P.C. STA = 31+02.93
 P.T. STA = 38+35.43

PROP. CURVE EFR-4
 PI STA. = 43+42.99
 $\Delta = 54^\circ 21' 05''$ (RT)
 D = 7° 09' 43"
 R = 800.00'
 T = 410.71'
 L = 758.89'
 E = 99.27'
 $e = N.C.$
 T.R. = N/A
 S.E. RUN = N/A
 P.C. STA = 39+32.28
 P.T. STA = 46+91.17



REVISIONS	
NAME	DATE

ILLINOIS DEPARTMENT OF TRANSPORTATION
ALIGNMENTS
 FAI ROUTE 70
 SECTION 60-10K-1, 60-10HB
 MADISON COUNTY
 DRAWN BY: td
 PLOT DATE: *DATE-TIME*



DATE-TIME
 DSN-SPEE
 REF-23500100.dgn
 REF-