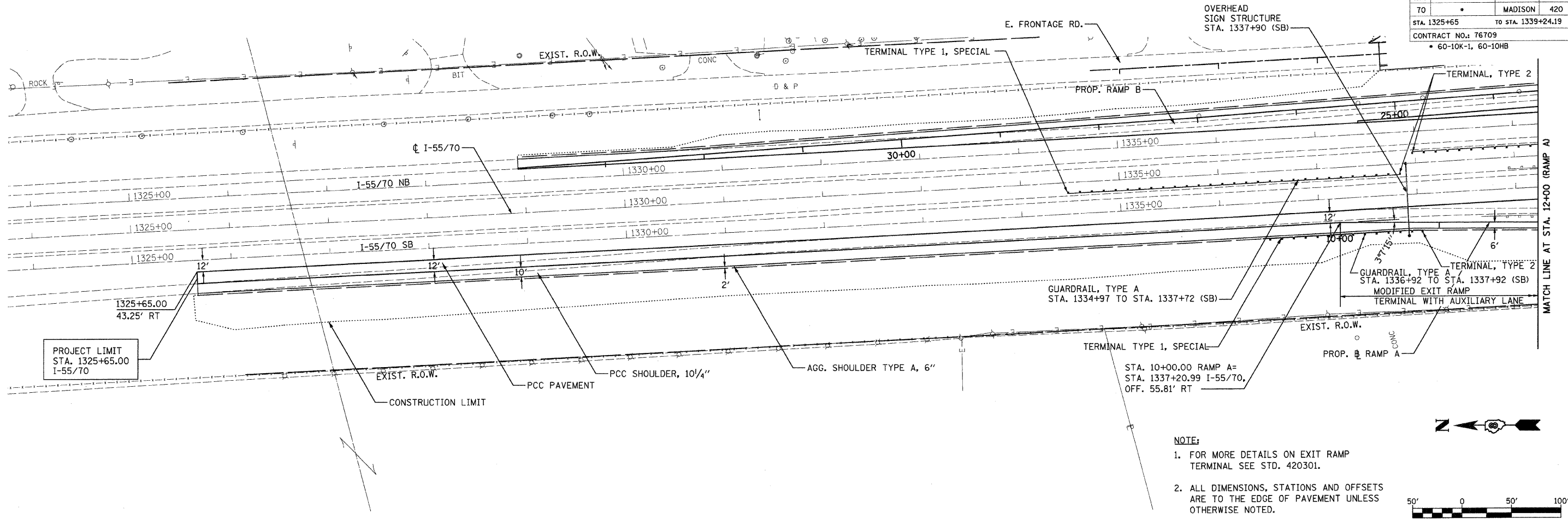
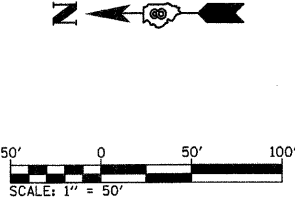


FBI ROUTE	SECTION	COUNTY	TOTAL SHEETS	SHEET NO.
70	*	MADISON	420	54
STA. 1325+65		TO STA. 1339+24.19		
CONTRACT NO.: 76709				
• 60-10K-1, 60-10HB				



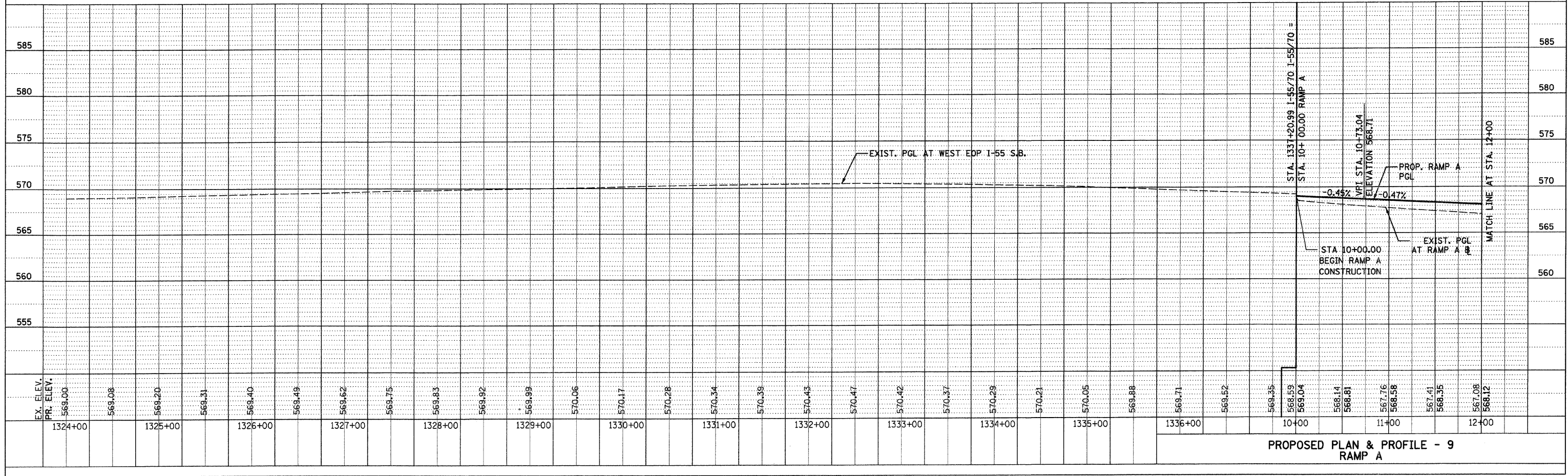
PROJECT LIMIT
STA. 1325+65.00
I-55/70

- NOTE:
1. FOR MORE DETAILS ON EXIT RAMP TERMINAL SEE STD. 420301.
 2. ALL DIMENSIONS, STATIONS AND OFFSETS ARE TO THE EDGE OF PAVEMENT UNLESS OTHERWISE NOTED.



PLAN	DATE
NO. _____	_____
BY _____	_____
DATE _____	_____
NO. _____	_____
BY _____	_____
DATE _____	_____
NO. _____	_____
BY _____	_____
DATE _____	_____

PROFILE	DATE
NO. _____	_____
BY _____	_____
DATE _____	_____
NO. _____	_____
BY _____	_____
DATE _____	_____



PROPOSED PLAN & PROFILE - 9
RAMP A

DATE-TIME
JOB-SPEC
REF- 236rtd01.dgn
REF- 236rtd01.dgn
REF- 236rtd01.dgn
REF- 236rtd01.dgn
REF- 236rtd01.dgn