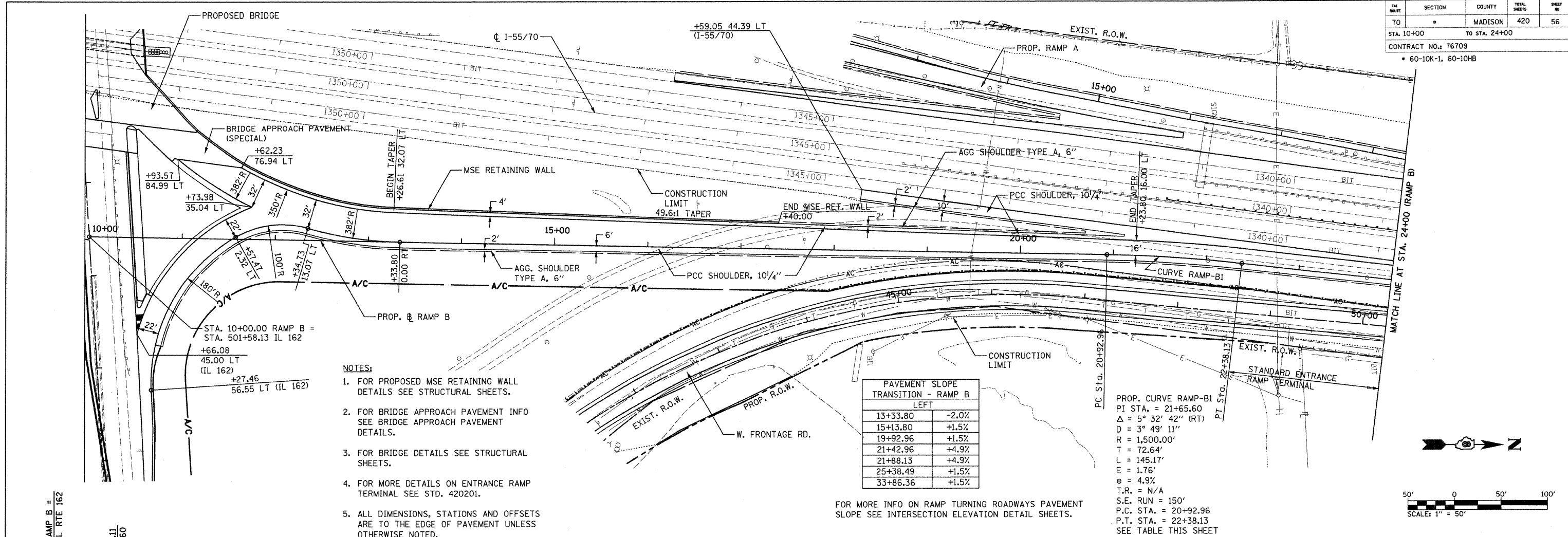


PLAN	SURVEYED	DATE
	PLotted	BY
	NOTE BOOK	NO.
	NO. OF SHEETS	
	DATE	

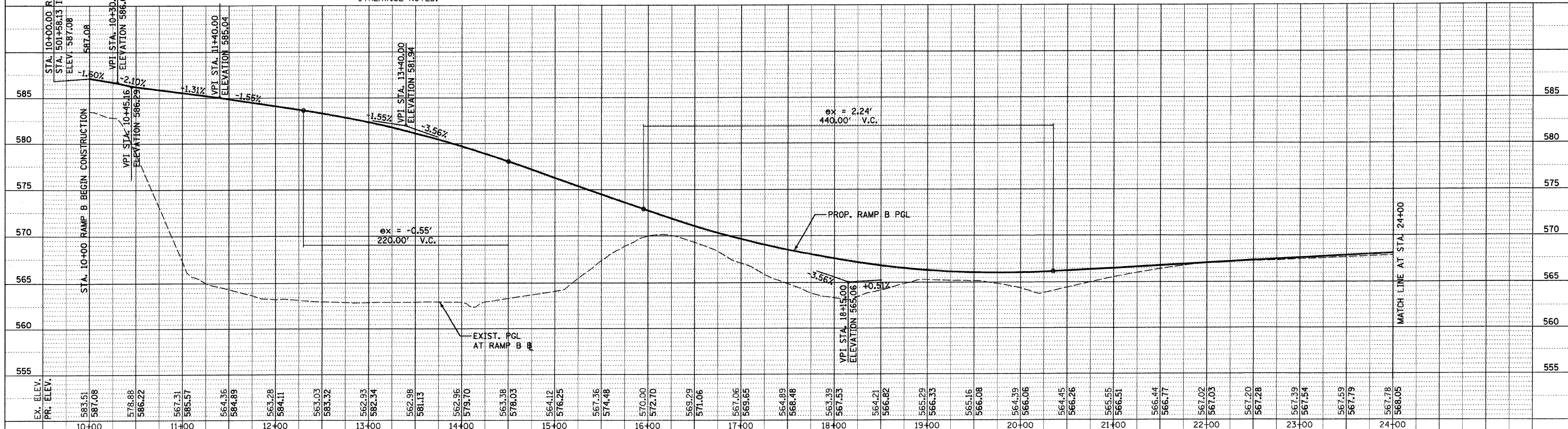
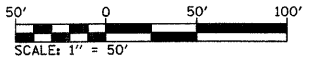
PROFILE	SURVEYED	DATE
	PLotted	BY
	NOTE BOOK	NO.
	NO. OF SHEETS	
	DATE	



- NOTES:**
1. FOR PROPOSED MSE RETAINING WALL DETAILS SEE STRUCTURAL SHEETS.
  2. FOR BRIDGE APPROACH PAVEMENT INFO SEE BRIDGE APPROACH PAVEMENT DETAILS.
  3. FOR BRIDGE DETAILS SEE STRUCTURAL SHEETS.
  4. FOR MORE DETAILS ON ENTRANCE RAMP TERMINAL SEE STD. 420201.
  5. ALL DIMENSIONS, STATIONS AND OFFSETS ARE TO THE EDGE OF PAVEMENT UNLESS OTHERWISE NOTED.

Station	Slope
13+33.80	-2.0%
15+13.80	+1.5%
19+92.96	+1.5%
21+42.96	+4.9%
21+88.13	+4.9%
25+38.49	+1.5%
33+86.36	+1.5%

PROP. CURVE RAMP-B1  
 PI STA. = 21+65.60  
 $\Delta = 5^\circ 32' 42''$  (RT)  
 $D = 3^\circ 49' 11''$   
 $R = 1,500.00'$   
 $T = 72.64'$   
 $L = 145.17'$   
 $E = 1.76'$   
 $e = 4.9\%$   
 $T.R. = N/A$   
 $S.E. RUN = 150'$   
 $P.C. STA. = 20+92.96$   
 $P.T. STA. = 22+38.13$   
 SEE TABLE THIS SHEET



**PROPOSED PLAN & PROFILE - 11 RAMP B**

\*DATE-TIME\*  
 \*DGN-SPEC\*  
 \*REF- 236cpld.dgn  
 \*REF- 236cpld.dgn  
 \*REF- 236cpld.dgn  
 \*REF- 236cpld.dgn  
 \*REF- 236cpld.dgn