

- NOTES:**
1. FOR PROPOSED MSE RETAINING WALL DETAILS SEE STRUCTURAL SHEETS.
 2. FOR BRIDGE APPROACH PAVEMENT INFO SEE BRIDGE APPROACH PAVEMENT DETAILS.
 3. FOR BRIDGE DETAILS SEE STRUCTURAL SHEETS.
 4. FOR MORE DETAILS ON EXIT RAMP TERMINAL WITH SEE STD. 420301.
 5. ALL DIMENSIONS, STATIONS AND OFFSETS ARE TO THE EDGE OF PAVEMENT UNLESS OTHERWISE NOTED.

PAVEMENT SLOPE TRANSITION - RAMP C

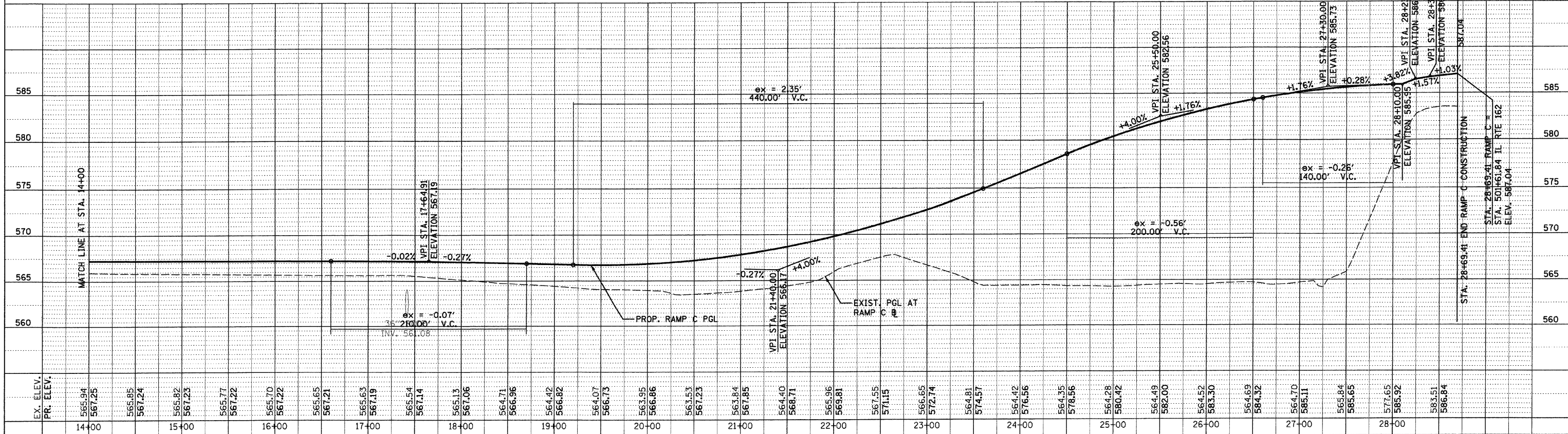
	LEFT	RIGHT
10+00.00	+1.5%	-1.5%
23+32.24	+1.5%	-1.5%
25+12.24	-2.0%	-2.0%

PROP. CURVE RAMP-C1
 PI STA. = 18+66.40
 $\Delta = 3^\circ 40' 49''$ (RT)
 $D = 3^\circ 49' 11''$
 $R = 1,500.00'$
 $T = 48.19'$
 $L = 96.35'$
 $E = 0.77'$
 $e = NC$ (1.5%)
 $T.R. = N/A$
 $S.E. RUN = N/A$
 $P.C. STA. = 18+18.21$
 $P.T. STA. = 19+14.56$

FOR MORE INFO ON RAMP TURNING ROADWAYS PAVEMENT SLOPE SEE INTERSECTION ELEVATION DETAIL SHEETS.

PLAN	SURVEYED	DATE
	PLOTTED	
	CHECKED	
	BY	
	NO.	

PROFILE	SURVEYED	DATE
	PLOTTED	
	CHECKED	
	BY	
	NO.	



PROPOSED PLAN & PROFILE - 14 RAMP C

DATE-TIME
 DGN-SPEC
 *REF- 236csp01.dgn
 *REF- 236csp01.dgn
 *REF- 236csp01.dgn
 *REF- 236csp01.dgn
 *REF- 236csp01.dgn