
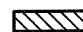
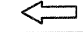
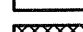




FAP ROUTE	SECTION	COUNTY	TOTAL SHEETS	SHEET NO
70		MADISON	420	76
STA. TO STA.				
CONTRACT NO.: 76709				
60-10K-1, 60-10HB				



**LEGEND:**

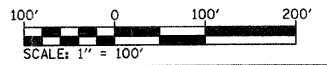
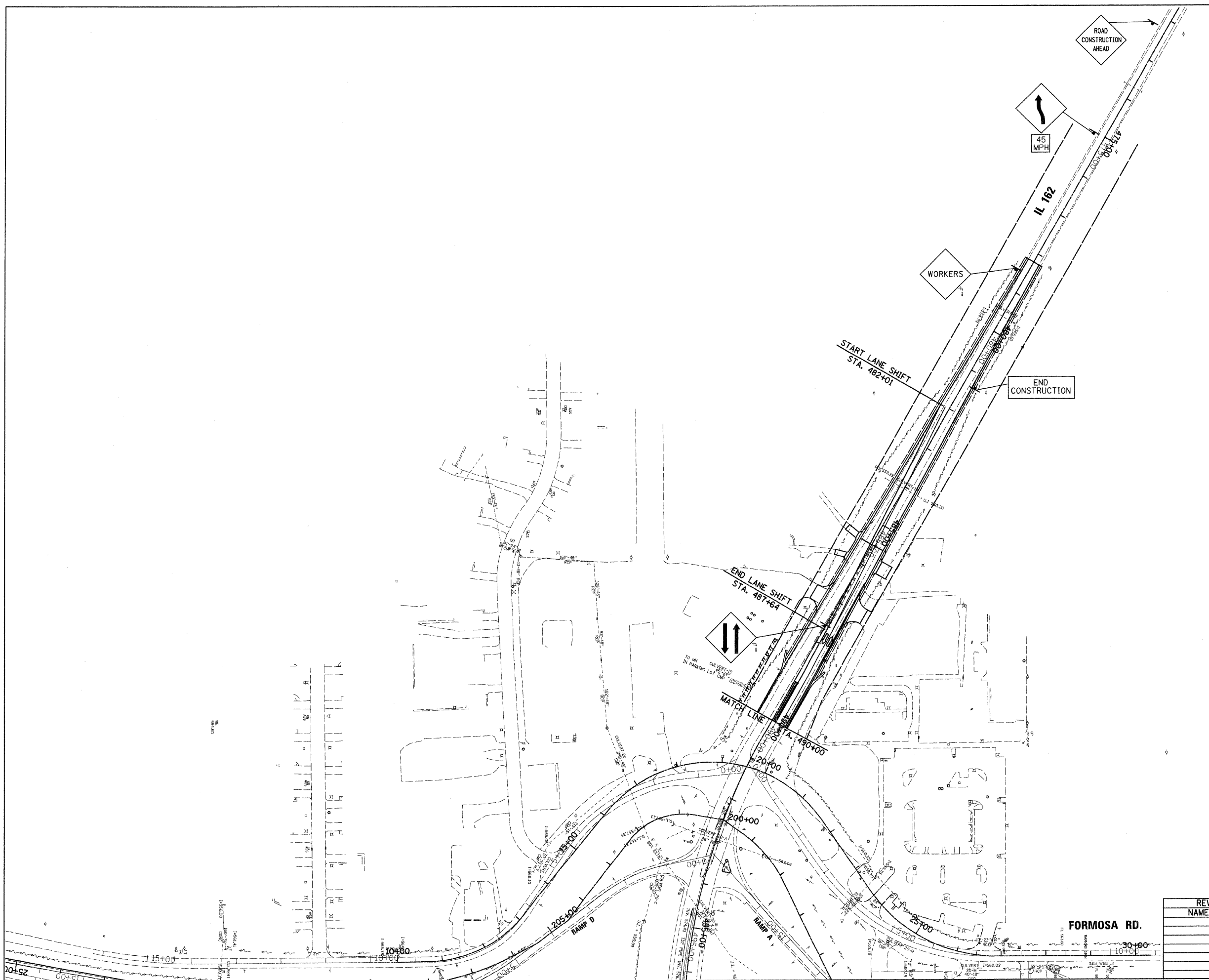
-  EXISTING OR NEW PAVEMENT USED FOR MAINTENANCE OF TRAFFIC
-  CONSTRUCTION LIMITS DURING STAGE
-  DIRECTION OF TRAFFIC ARROW
-  NEW PAVEMENT
-  TEMPORARY PAVEMENT
-  TEMPORARY TRAFFIC SIGN

**IL ROUTE 162**

**STAGE III TRAFFIC**

1. TRAFFIC USES WESTBOUND LANES DURING CONSTRUCTION OF EASTBOUND LANES, EAST OF STA. 490+00.

PLAN	SURVEYED	DATE
NOTE BOOK NO.	PLATTED	
	CHECKED	
	BY	
	DATE	
	FILE NAME	



REVISIONS	
NAME	DATE

ILLINOIS DEPARTMENT OF TRANSPORTATION  
**MAINTENANCE OF TRAFFIC - 15**  
**STAGE III PLAN VIEW**

FAP ROUTE 70  
SECTION 60-10K-1, 60-10HB  
MADISON COUNTY

DRAWN BY: HJB  
PLOT DATE: \*DATE-TIME\*

\*DATE-TIME\*  
\*NON-SPEC\*  
\*REF\*  
\*REF\*