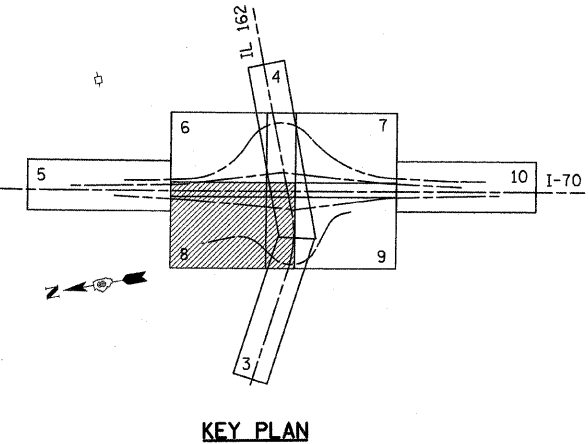
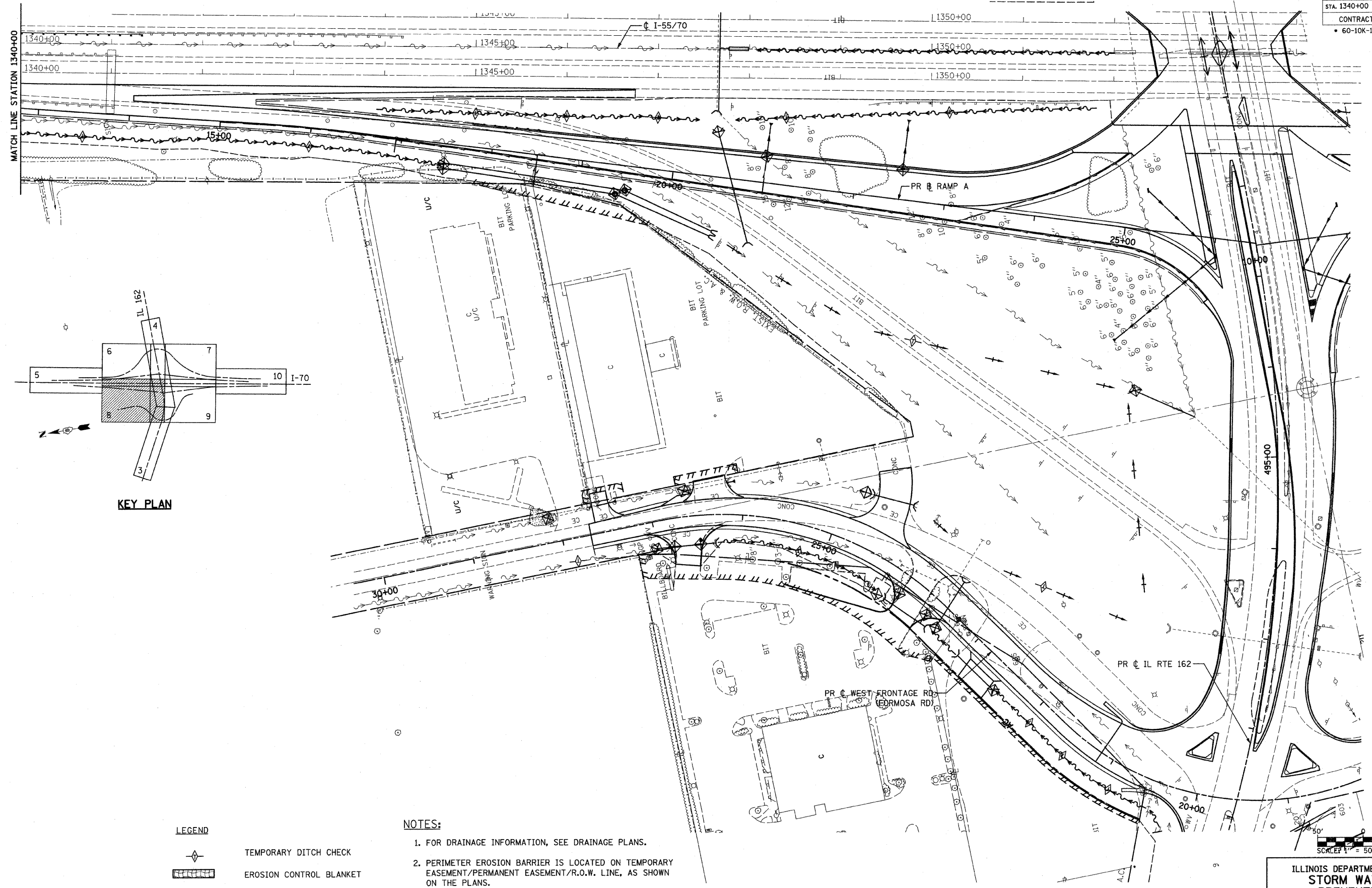


FAI ROUTE	SECTION	COUNTY	TOTAL SHEETS	SHEET NO.
70		MADISON	420	101
STA. 1340+00		TO STA. 1353+15.77		
CONTRACT NO. 76709				
• 60-10K-1, 60-10HB				



PLAN	DATE
NO.	
BY	
CHECKED	
APPROVED	
PLOTTED	
PRINTED	
FILED	
DATE	
BY	
CHECKED	
APPROVED	
PLOTTED	
PRINTED	
FILED	
DATE	
BY	
CHECKED	
APPROVED	
PLOTTED	
PRINTED	
FILED	



KEY PLAN

LEGEND

	TEMPORARY DITCH CHECK
	EROSION CONTROL BLANKET
	PERIMETER EROSION BARRIER
	INLET AND PIPE PROTECTION

- NOTES:
1. FOR DRAINAGE INFORMATION, SEE DRAINAGE PLANS.
  2. PERIMETER EROSION BARRIER IS LOCATED ON TEMPORARY EASEMENT/PERMANENT EASEMENT/R.O.W. LINE, AS SHOWN ON THE PLANS.
  3. FOR PERMANENT EROSION CONTROL INFORMATION, SEE SEEDING PLANS.
  4. FOR EROSION CONTROL DURING STAGED CONSTRUCTION, SEE EROSION CONTROL AND TEMPORARY DRAINAGE PLAN.

ILLINOIS DEPARTMENT OF TRANSPORTATION  
**STORM WATER POLLUTION PREVENTION PLAN - 8**

FAI ROUTE 70  
 SECTION 60-10K-1, 60-10HB  
 MADISON COUNTY

DRAWN BY: GRH

PLOT DATE: \*DATE-TIME\*

REVISIONS	
NAME	DATE

\*DOM-SPEC\*  
 \*REF- 236ec01.dgn  
 \*REF- 236ec01.dgn  
 \*REF- 236ec01.dgn  
 \*REF- 236ec01.dgn  
 \*REF- 236ec01.dgn  
 \*REF- 236ec01.dgn