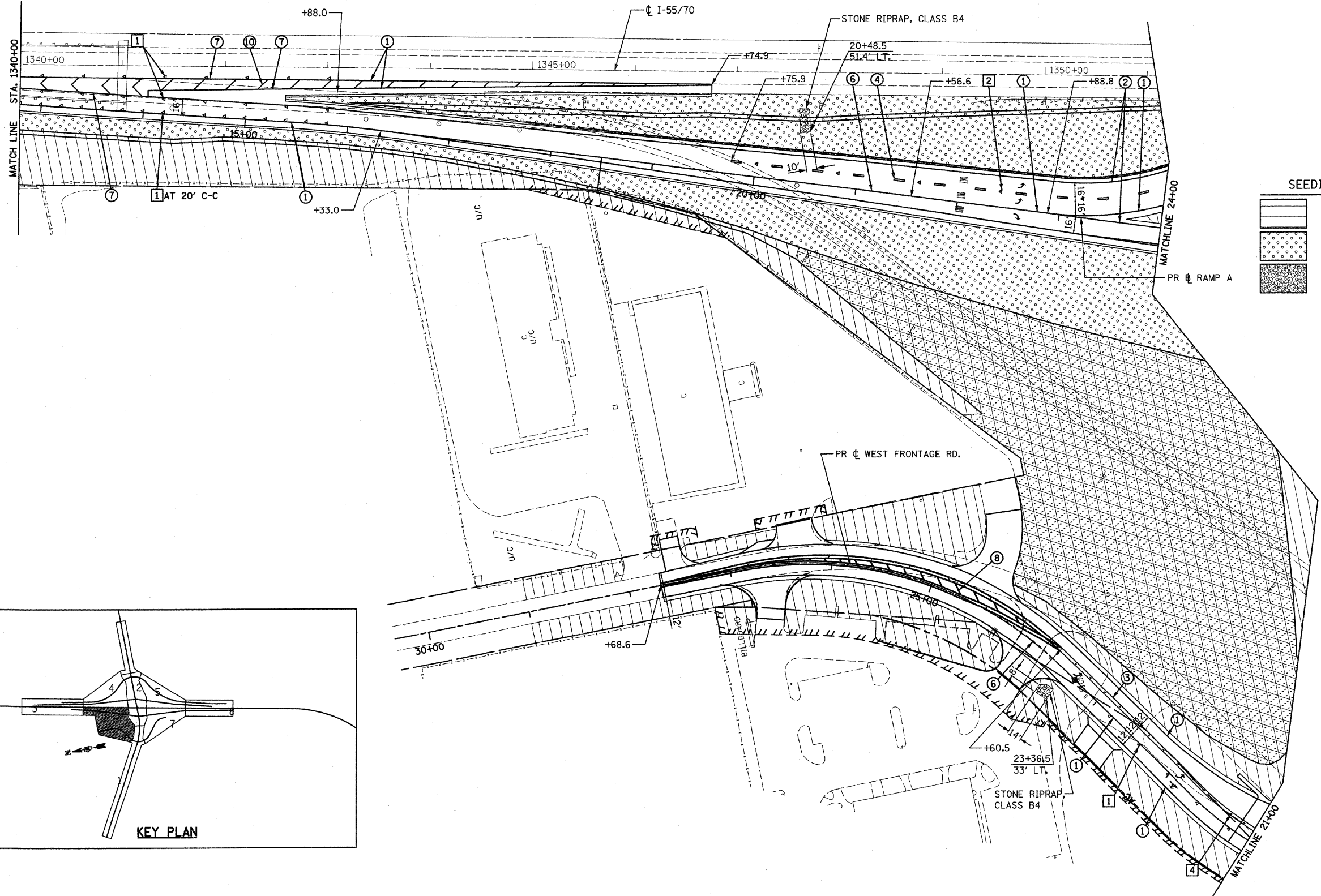




DATE	
BY	
REVISIONS	
PLAN	
NOTE BOOK NO.	
CHECKED	
PAID FILE NAME	



**SEEDING LEGEND**

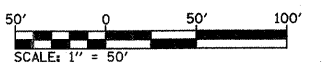
	CLASS 2		SPECIAL
	CLASS 2A		CLASS 1B
	STONE RIPRAP		

**PAVEMENT MARKING LEGEND**

- |                          |                              |  |
|--------------------------|------------------------------|--|
| ① 4" WHITE SOLID         | ⑧ 12" YELLOW DIAGONAL-20°C-C |  |
| ② 4" YELLOW SOLID        | ⑨ 12" WHITE DIAGONAL-20°C-C  |  |
| ③ 4" DOUBLE YELLOW SOLID | ⑩ 12" WHITE DIAGONAL-30°C-C  |  |
| ④ 4" WHITE SKIP-DASH     | ⑪ 24" STOP BAR (TYP.)        |  |
| ⑤ 4" YELLOW SKIP-DASH    | ⑫ TURN ARROW WHITE           |  |
| ⑥ 4" WHITE DASHED        | ⑬ CURB MARKING (SEE DETAIL)  |  |
| ⑦ 8" WHITE SOLID         |                              |  |

**RAISED REFLECTIVE PAVEMENT MARKER LEGEND**

- |  |
|--|
| ① CRYSTAL ONE-WAY-40°C-C                         |
| ② CRYSTAL ONE-WAY-80°C-C                         |
| ③ AMBER ONE-WAY-40°C-C                           |
| ④ AMBER TWO-WAY-40°C-C                           |
| ⑤ PRISMATIC CURB REFLECTOR ON CURBS (SEE DETAIL) |



REVISIONS	
NAME	DATE

ILLINOIS DEPARTMENT OF TRANSPORTATION  
**PROPOSED PAVEMENT MARKING AND SEEDING PLAN - 6**  
 FAI ROUTE 70  
 SECTION 60-10K, 60-10-4HB  
 MADISON COUNTY  
 DRAWN BY: GRH  
 PLOT DATE: \*DATE-TIME\*

\*DATE-TIME\*  
 \*DON-SEC\*  
 \*REF-236crp01.dgn\*  
 \*REF-236crp02.dgn\*  
 \*REF-236crp03.dgn\*  
 \*REF-236crp04.dgn\*  
 \*REF-236crp05.dgn\*  
 \*REF-236crp06.dgn\*  
 \*REF-236crp07.dgn\*  
 \*REF-236crp08.dgn\*  
 \*REF-236crp09.dgn\*  
 \*REF-236crp10.dgn\*  
 \*REF-236crp11.dgn\*  
 \*REF-236crp12.dgn\*  
 \*REF-236crp13.dgn\*  
 \*REF-236crp14.dgn\*  
 \*REF-236crp15.dgn\*  
 \*REF-236crp16.dgn\*  
 \*REF-236crp17.dgn\*  
 \*REF-236crp18.dgn\*  
 \*REF-236crp19.dgn\*  
 \*REF-236crp20.dgn\*  
 \*REF-236crp21.dgn\*  
 \*REF-236crp22.dgn\*  
 \*REF-236crp23.dgn\*  
 \*REF-236crp24.dgn\*  
 \*REF-236crp25.dgn\*  
 \*REF-236crp26.dgn\*  
 \*REF-236crp27.dgn\*  
 \*REF-236crp28.dgn\*  
 \*REF-236crp29.dgn\*  
 \*REF-236crp30.dgn\*  
 \*REF-236crp31.dgn\*  
 \*REF-236crp32.dgn\*  
 \*REF-236crp33.dgn\*  
 \*REF-236crp34.dgn\*  
 \*REF-236crp35.dgn\*  
 \*REF-236crp36.dgn\*  
 \*REF-236crp37.dgn\*  
 \*REF-236crp38.dgn\*  
 \*REF-236crp39.dgn\*  
 \*REF-236crp40.dgn\*  
 \*REF-236crp41.dgn\*  
 \*REF-236crp42.dgn\*  
 \*REF-236crp43.dgn\*  
 \*REF-236crp44.dgn\*  
 \*REF-236crp45.dgn\*  
 \*REF-236crp46.dgn\*  
 \*REF-236crp47.dgn\*  
 \*REF-236crp48.dgn\*  
 \*REF-236crp49.dgn\*  
 \*REF-236crp50.dgn\*  
 \*REF-236crp51.dgn\*  
 \*REF-236crp52.dgn\*  
 \*REF-236crp53.dgn\*  
 \*REF-236crp54.dgn\*  
 \*REF-236crp55.dgn\*  
 \*REF-236crp56.dgn\*  
 \*REF-236crp57.dgn\*  
 \*REF-236crp58.dgn\*  
 \*REF-236crp59.dgn\*  
 \*REF-236crp60.dgn\*  
 \*REF-236crp61.dgn\*  
 \*REF-236crp62.dgn\*  
 \*REF-236crp63.dgn\*  
 \*REF-236crp64.dgn\*  
 \*REF-236crp65.dgn\*  
 \*REF-236crp66.dgn\*  
 \*REF-236crp67.dgn\*  
 \*REF-236crp68.dgn\*  
 \*REF-236crp69.dgn\*  
 \*REF-236crp70.dgn\*  
 \*REF-236crp71.dgn\*  
 \*REF-236crp72.dgn\*  
 \*REF-236crp73.dgn\*  
 \*REF-236crp74.dgn\*  
 \*REF-236crp75.dgn\*  
 \*REF-236crp76.dgn\*  
 \*REF-236crp77.dgn\*  
 \*REF-236crp78.dgn\*  
 \*REF-236crp79.dgn\*  
 \*REF-236crp80.dgn\*  
 \*REF-236crp81.dgn\*  
 \*REF-236crp82.dgn\*  
 \*REF-236crp83.dgn\*  
 \*REF-236crp84.dgn\*  
 \*REF-236crp85.dgn\*  
 \*REF-236crp86.dgn\*  
 \*REF-236crp87.dgn\*  
 \*REF-236crp88.dgn\*  
 \*REF-236crp89.dgn\*  
 \*REF-236crp90.dgn\*  
 \*REF-236crp91.dgn\*  
 \*REF-236crp92.dgn\*  
 \*REF-236crp93.dgn\*  
 \*REF-236crp94.dgn\*  
 \*REF-236crp95.dgn\*  
 \*REF-236crp96.dgn\*  
 \*REF-236crp97.dgn\*  
 \*REF-236crp98.dgn\*  
 \*REF-236crp99.dgn\*  
 \*REF-236crp100.dgn\*