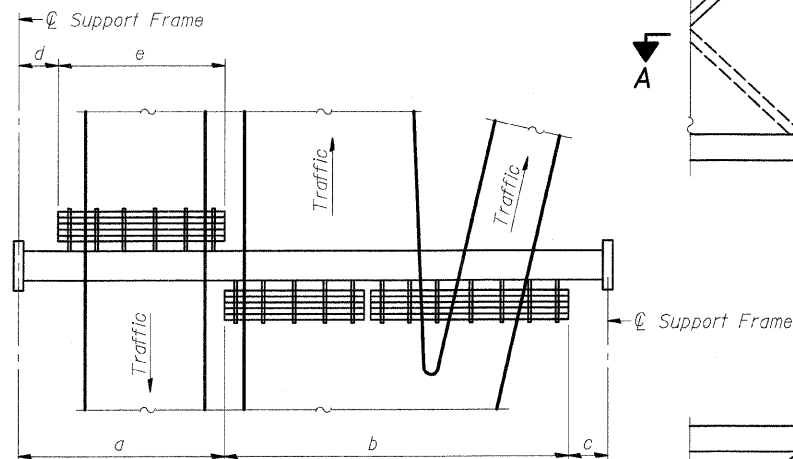
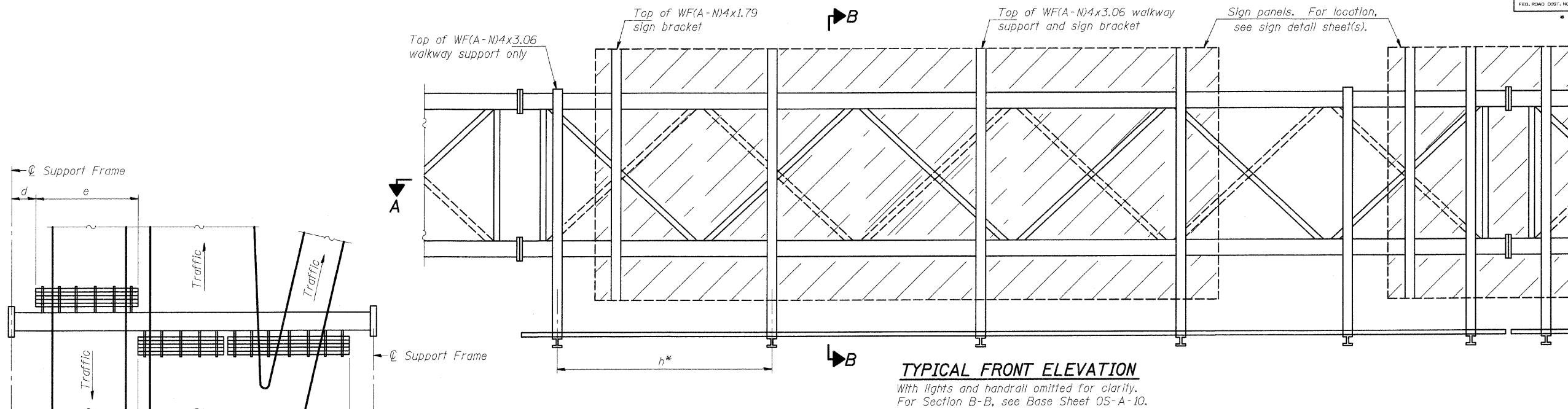


STATE OF ILLINOIS  
DEPARTMENT OF TRANSPORTATION

ROUTE NO.	SECTION	COUNTY	TOTAL SHEETS	SHEET NO.
70	*	MADISON	420	173
FED. ROAD DIST. NO. 6		ILLINOIS	FED. AID PROJECT*	
* 60-10K-1, 60-10HB				

SHEET NO. -  
- SHEETS



**PLAN**  
**WALKWAY AND HANDRAIL SKETCH**  
(Road plan beneath truss varies)

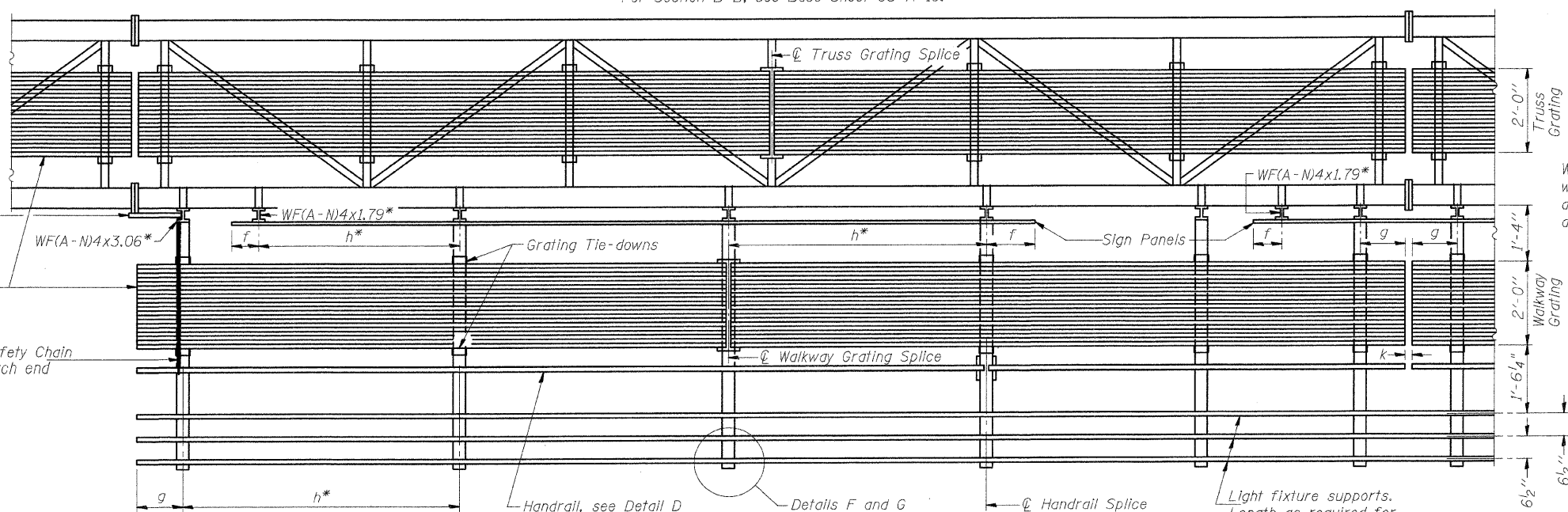
**BRACKET TABLE**

Sign Width		Number Brackets Required
Greater Than	Less Than or Equal To	
	8'-0"	2
8'-0"	14'-0"	3
14'-0"	20'-0"	4
20'-0"	26'-0"	5
26'-0"	32'-0"	6

\*\*Alternate angle  
for safety chain  
attachment

Standard Aluminum  
Grating, see  
Details T and W

Safety Chain  
Each end



Walkway and Truss Grating  
width dimensions are nominal  
and may vary ±1/2" based on  
available standard widths.

**SECTION A-A**

Handrail and walkway shall span a minimum of three brackets between splices and/or gap joints.  
Place all sign and walkway brackets as close to panel points as practical.  
Grating, handrail and light support splices placed as needed.

Truss grating to facilitate inspection shall run full length  
(center to center of support frames) ±12" on overhead trusses.  
Cost of truss grating is included in "Overhead Sign Structure".

Notes: \*Space walkway brackets WF(A-N)4x3.06 and sign brackets WF(A-N)4x1.79  
for efficiency and within limits shown:

- f = 12" maximum, 4" minimum (End of sign to center of nearest bracket)
- g = 12" maximum, 4" minimum (End of walkway grating to center of nearest support bracket)
- h = 6'-0" maximum (center to center of sign and/or walkway support brackets, WF(A-N)4x1.79 or WF(A-N)4x3.06)
- k = 2" maximum gap between adjacent walkway grating sections and handrail ends

\*\*If walkway bracket at safety chain location is behind sign, add angle to bracket, see Alternate  
Safety Chain Attachment on Base Sheet OS-A-11.

For Details T and W, Section B-B and Grating Splice Details, see Base Sheet OS-A-10.  
For Details D, F, G and P and Handrail Splice Details, see Base Sheet OS-A-11.

Structure Number	Station	a	b	c	d	e	Walkway Grating and Handrail Lengths
8S0601070L018.3	1337+90	13'-4"	52'-6"	7'-2"	-	-	52'-6"
8S0601070R017.7	1368+72	14'-4"	51'-0"	6'-8"	-	-	51'-0"

**OVERHEAD SIGN STRUCTURES  
ALUMINUM WALKWAY DETAILS**

FAI ROUTE 70  
SECTION 60-10K-1, 60-10-4HB  
MADISON COUNTY

DESIGNED	-	BTO
CHECKED	-	JAN
DRAWN	-	BTO
CHECKED	-	JAN

EXAMINED	-	20
PASSED	-	ENGINEER OF STRUCTURAL SERVICES
	-	ENGINEER OF BRIDGES AND STRUCTURES

NUMBER	REVISION	DATE