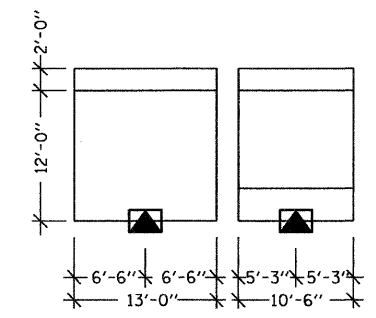
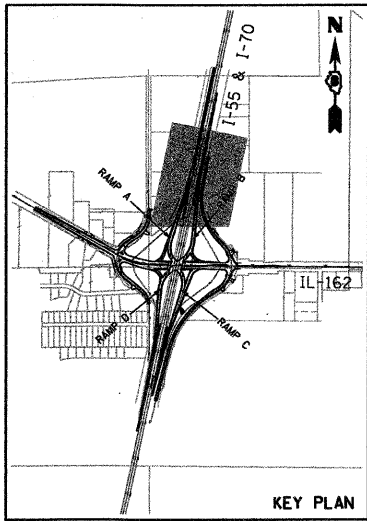


PLAN	NO.
DATE	
BY	
REVISIONS	
NO.	
DATE	
BY	
REVISIONS	
NO.	
DATE	
BY	

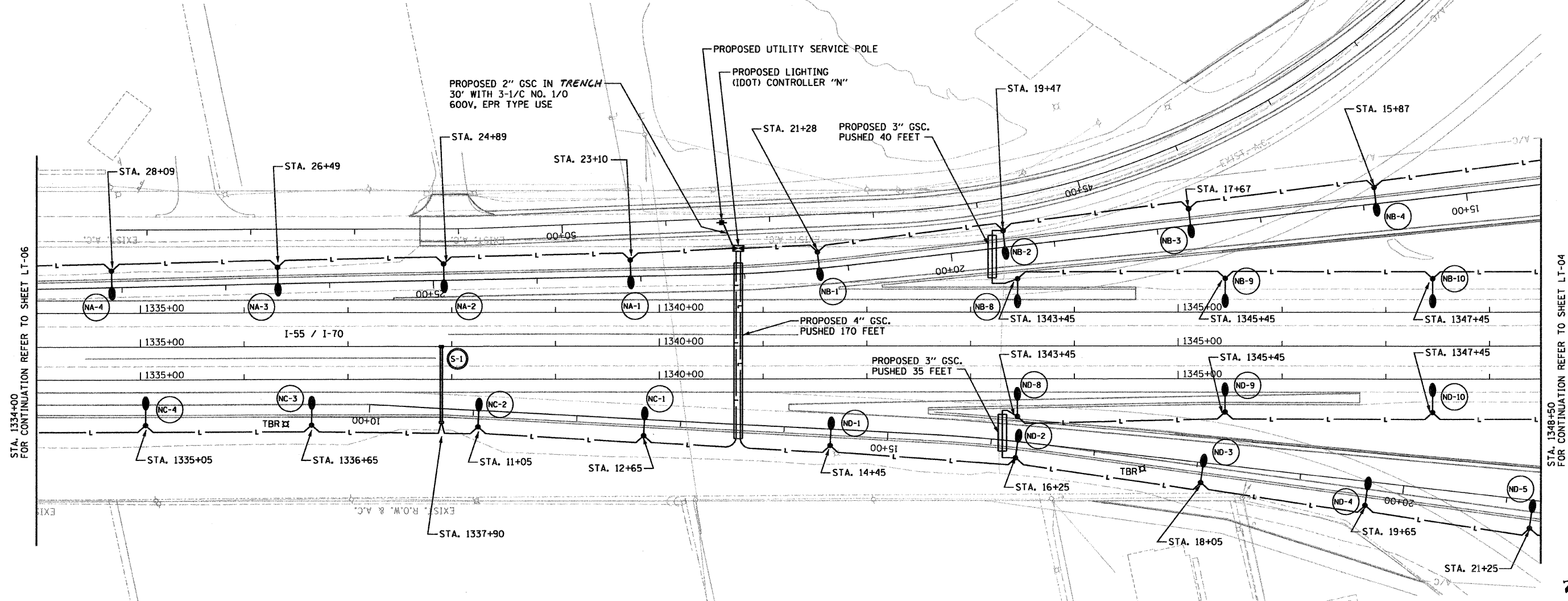


**SIGN S-1 - SOUTHBOUND I-55/70**  
NOT TO SCALE

NOTES:  
1. ALL UNIT DUCT ON THIS SHEET SHALL BE 4 (2 \* 4 XLP, 1 \* 4 XLPG, 1.0P) UNLESS NOTED OTHERWISE.

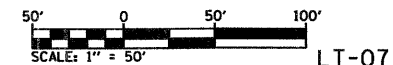
SECTION	COUNTY	TOTAL SHEETS	SHEET NO.
60-10 (K-1,HB)	MADISON	420	184
CONTRACT NO.: 76709			

LEGEND  
TBR - TO BE REMOVED  
REMOVE POLE  
REMOVE AND SALVAGE LUMINAIRE  
REMOVE FOUNDATION



STA. 1334+00  
FOR CONTINUATION REFER TO SHEET LT-06

STA. 1348+50  
FOR CONTINUATION REFER TO SHEET LT-04



LT-07

REVISIONS	
NAME	DATE

ILLINOIS DEPARTMENT OF TRANSPORTATION  
**PROPOSED ROADWAY LIGHTING PLAN**  
I-55/70 STA. 1334+00 TO STA. 1348+50  
FAI ROUTE 70  
SECTION 60-10K-1, 60-10HB  
MADISON COUNTY  
DRAWN BY: RPJ  
CHECKED BY: A. OSHANA, P.E.

XXXXXXX - IDOT IL 162 over I-55-70 revisions  
236-LT-07.dgn  
1/28/2009  
1:29:12 PM  
Robert J. Swanson