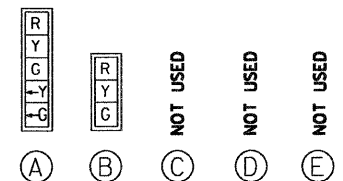


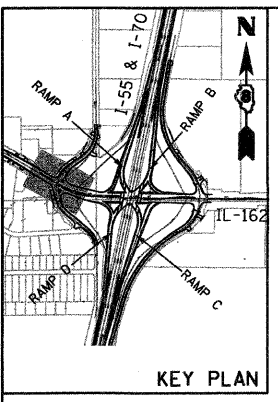
MAP SHEET	SECTION	COUNTY	TOTAL SHEETS	SHEET NO.
TO	60-10 (K-1,HB)	MADISON	420	196
STA.	TO STA.			
CONTRACT NO.: 76709				

**TRAFFIC SIGNALS LEGEND**

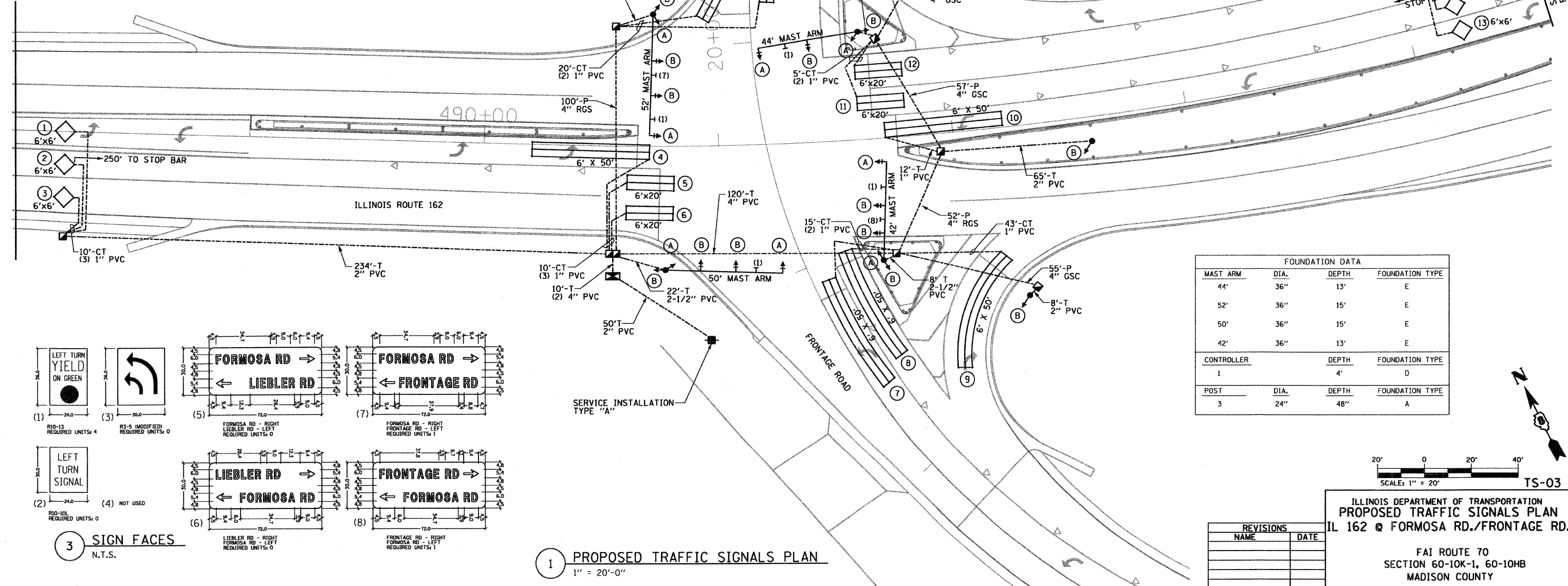
- PROPOSED
- CONTROLLER
  - SERVICE INSTALLATION
  - GALVANIZED STEEL CONDUIT  
(T) INDICATES IN TRENCH  
(P) INDICATES PUSHED
  - HANDHOLE
  - DOUBLE HANDHOLE
  - SIGNAL POST
  - MAST ARM ASSEMBLY AND POLE, STEEL
  - SIGNAL HEAD
  - SIGNAL HEAD WITH BACKPLATE
  - SIGN ON SIGNAL POLE / MAST ARM
  - DETECTOR LOOP
  - ADVANCED DETECTOR LOOP  
INTERCONNECT SYSTEMS DETECTOR LOOP



**2 TRAFFIC SIGNALS FACES**  
N.T.S.

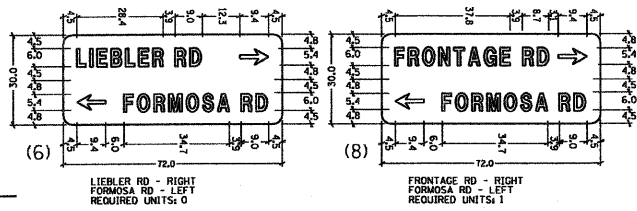
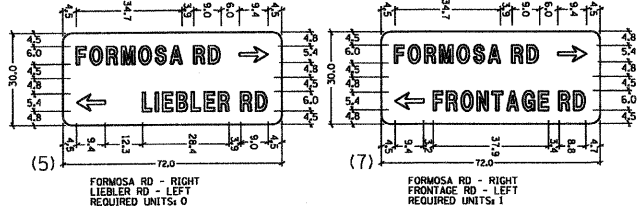
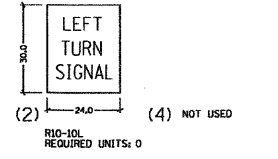
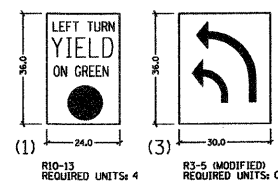


STA. 488+00



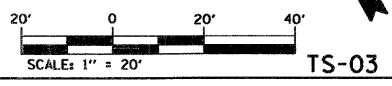
FOUNDATION DATA

MAST ARM	DIA.	DEPTH	FOUNDATION TYPE
44'	36"	13'	E
52'	36"	15'	E
50'	36"	15'	E
42'	36"	13'	E
CONTROLLER	DEPTH		FOUNDATION TYPE
1	4'		D
POST	DIA.	DEPTH	FOUNDATION TYPE
3	24"	48"	A



**3 SIGN FACES**  
N.T.S.

**1 PROPOSED TRAFFIC SIGNALS PLAN**  
1" = 20'-0"



REVISIONS

NAME	DATE

ILLINOIS DEPARTMENT OF TRANSPORTATION  
PROPOSED TRAFFIC SIGNALS PLAN  
IL 162 @ FORMOSA RD./FRONTAGE RD.

FAI ROUTE 70  
SECTION 60-10K-1, 60-10HB  
MADISON COUNTY

DRAWN BY: RPJ CHECKED BY: A. OSHANA, P.E.

PLAN

DATE	BY	REVISION

XXXXXX - IDOT IL 162 over I-55.70 revisions  
236-15-03 West\_Plan.dgn  
1/28/2009 5:14:30 PM  
Robert Swanson