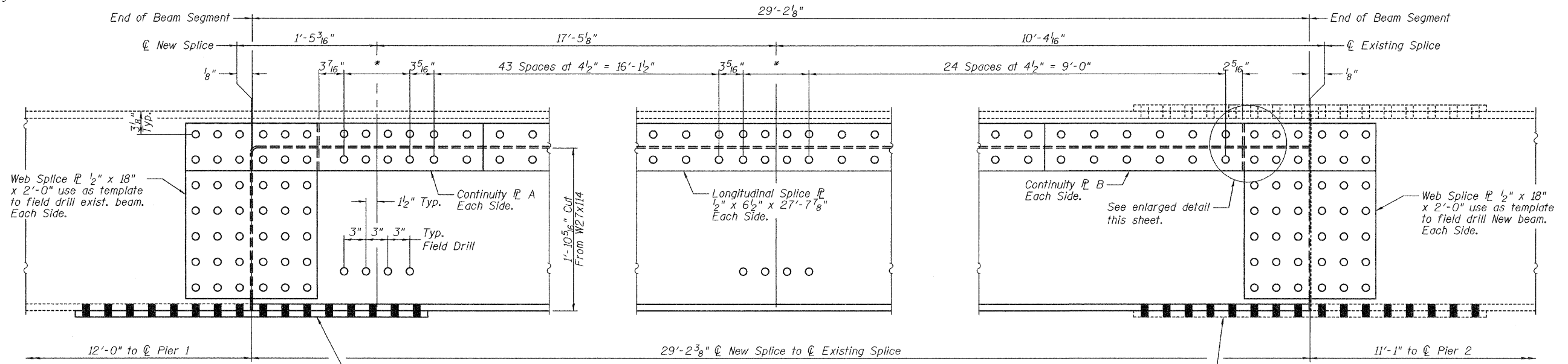
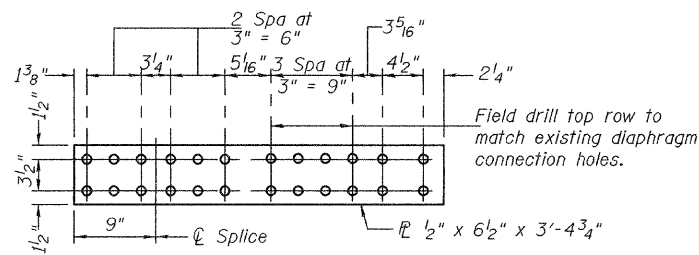


STATE OF ILLINOIS
DEPARTMENT OF TRANSPORTATION

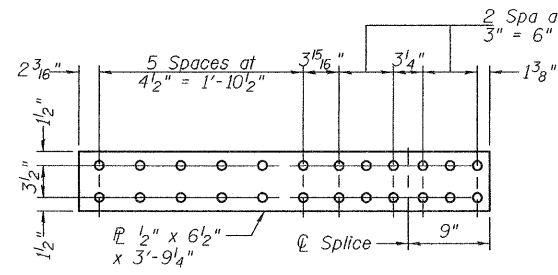
*3 Spaces at 3" = 9"
Field drill top row to
match exist. diaphragm
connection holes.



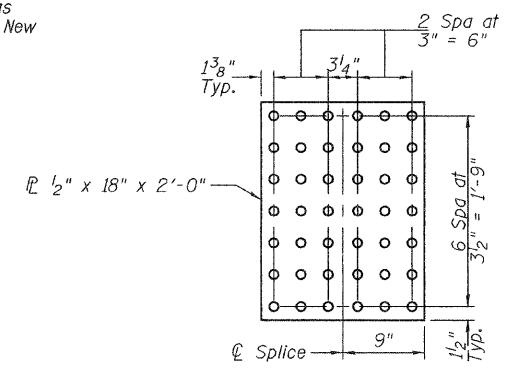
ELEVATION BEAM 1
(Looking South)



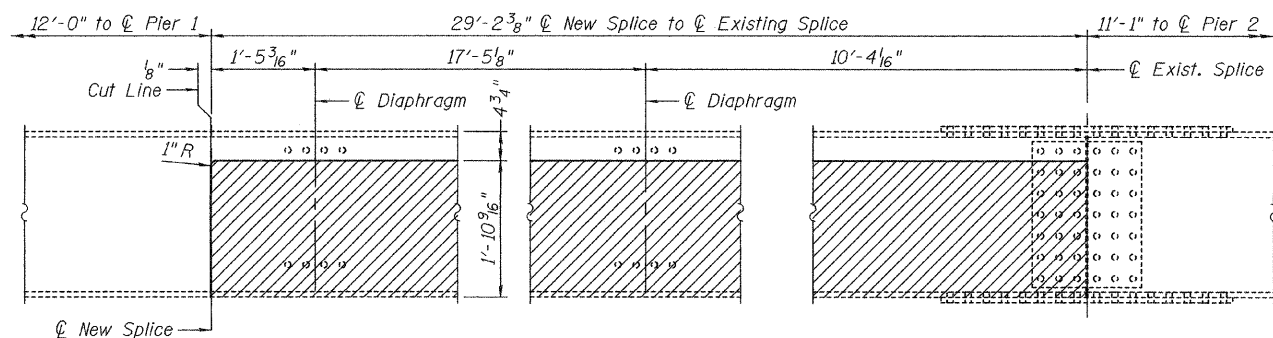
CONTINUITY PL A
(2 Required)



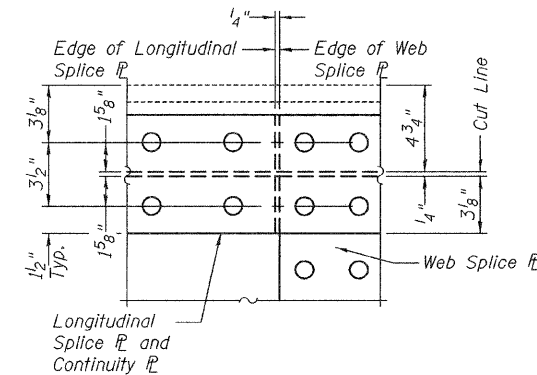
CONTINUITY PL B
(2 Required)



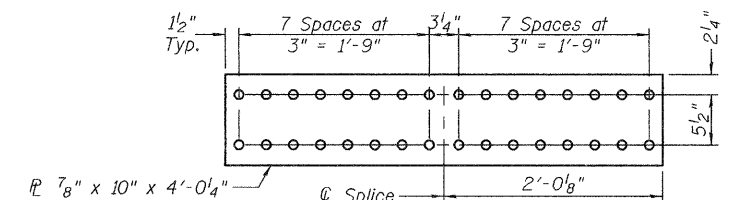
WEB SPLICE PL
(4 Required)



ELEVATION BEAM 1 REMOVAL
(Looking South)



ENLARGED DETAIL
(Opp End Similar)



FLANGE SPLICE PL
(1 Required)

DESIGNED	V.H.V.
CHECKED	A.T.H.
DRAWN	Drew Christopher
CHECKED	V.H.V. A.T.H.

EXAMINED	April 10, 2009
PASSED	Carl Prosser ENGINEER OF STRUCTURAL SERVICES
	Ralph E. Anderson ENGINEER OF BRIDGES AND STRUCTURES

BEAM 1 DETAILS
SN 060-0139

SHEET NO. 4	F.A.I. RTE.	SECTION	COUNTY	TOTAL SHEETS	SHEET NO.
	70	60-10HB-4R	Madison	420	207D
5 SHEETS	FED. ROAD DIST. NO. ILLINOIS		FED. AID PROJECT		CONTRACT NO. 76709