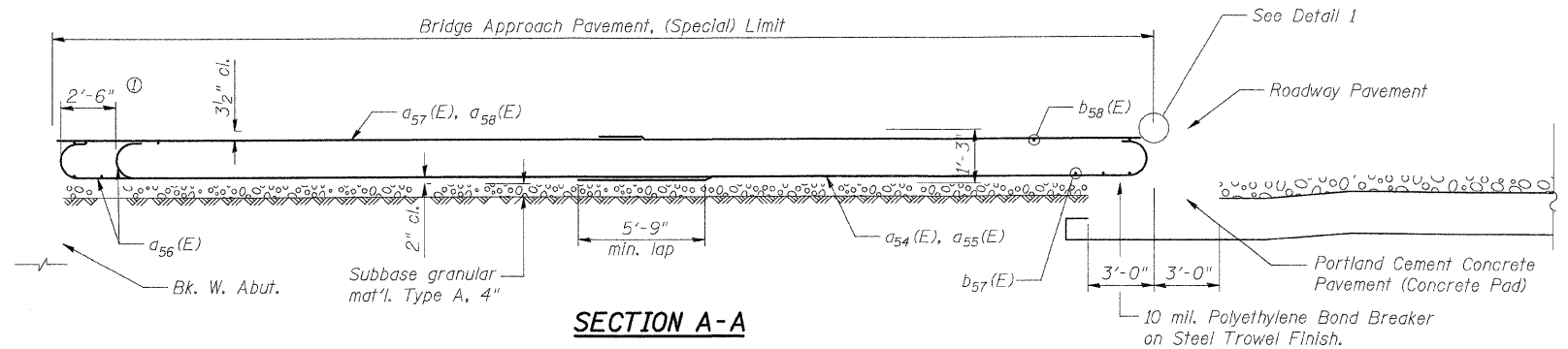
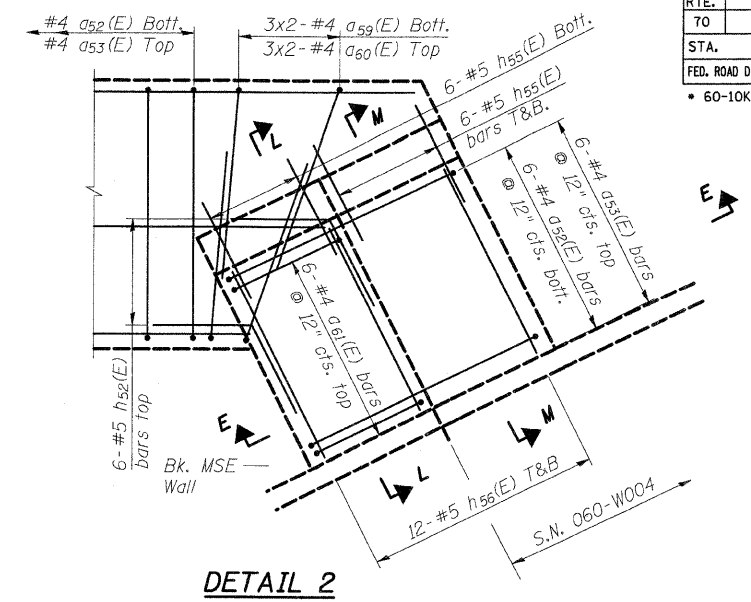


F.A.I. RTE.	SECTION	COUNTY	TOTAL SHEETS	SHEET NO.
70		MADISON	420	211
STA.	TO STA.			
FED. ROAD DIST. NO.	ILLINOIS	FED. AID PROJECT		
• 60-10K-1, 60-10HB CONTRACT NO. 76709				

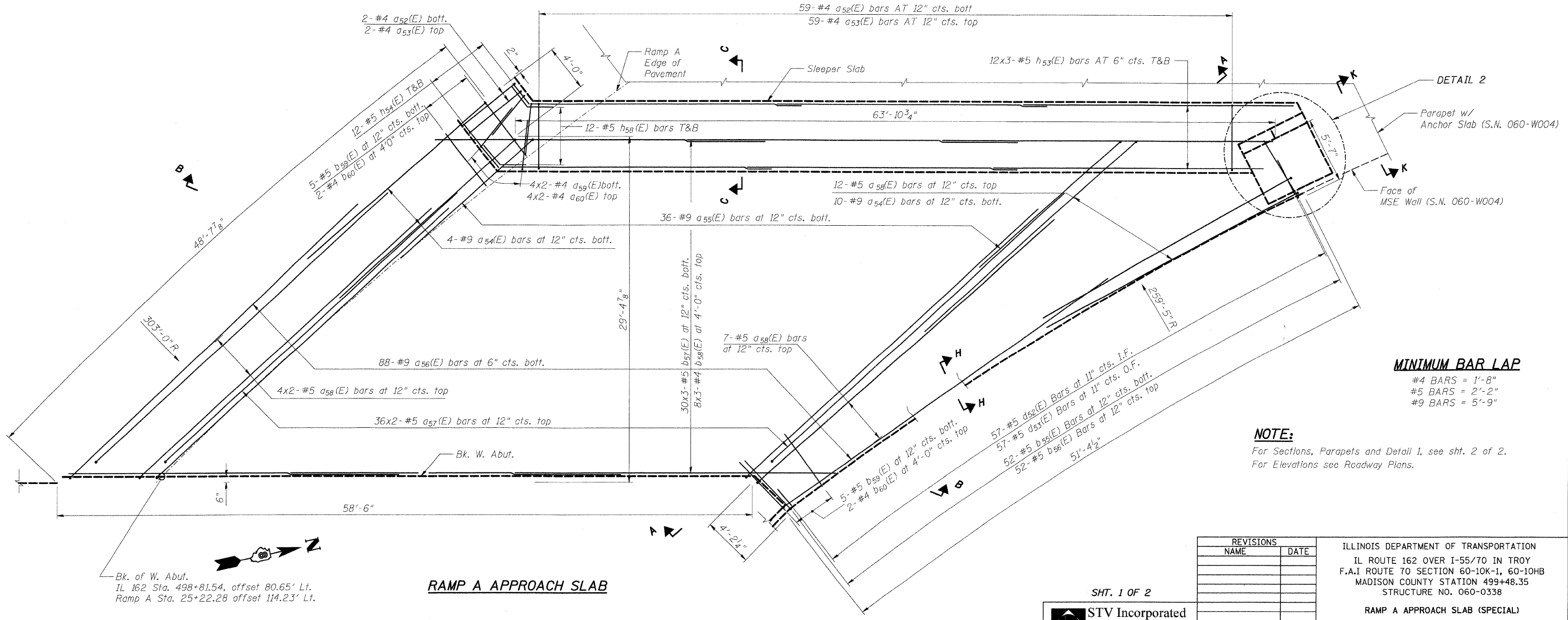


SECTION A-A

① Stagger #9 a56(E) bars as shown on plan - full width



DETAIL 2



RAMP A APPROACH SLAB

Bk. of W. Abut.
IL 162 Sta. 498+81.54, offset 80.65' Lt.
Ramp A Sta. 25+22.28 offset 114.23' Lt.

MINIMUM BAR LAP

- #4 BARS = 1'-8"
- #5 BARS = 2'-2"
- #9 BARS = 5'-9"

NOTE:
For Sections, Parapets and Detail 1, see sht. 2 of 2.
For Elevations see Roadway Plans.

REVISIONS	
NAME	DATE

ILLINOIS DEPARTMENT OF TRANSPORTATION
IL ROUTE 162 OVER I-55/70 IN TROY
F.A.I ROUTE 70 SECTION 60-10K-1, 60-10HB
MADISON COUNTY STATION 499+48.35
STRUCTURE NO. 060-0338
RAMP A APPROACH SLAB (SPECIAL)
DESIGNED: JAW DRAWN: BTO
CHECKED: BTO CHECKED: JAN
DATE: 4/06

SHT. 1 OF 2

STV Incorporated
Engineers/Architects/Planners/Construction Managers
200 W. Monroe Street, Suite 1650
Chicago, IL 60606-5915
312-953-0655, FAX 312-553-0661