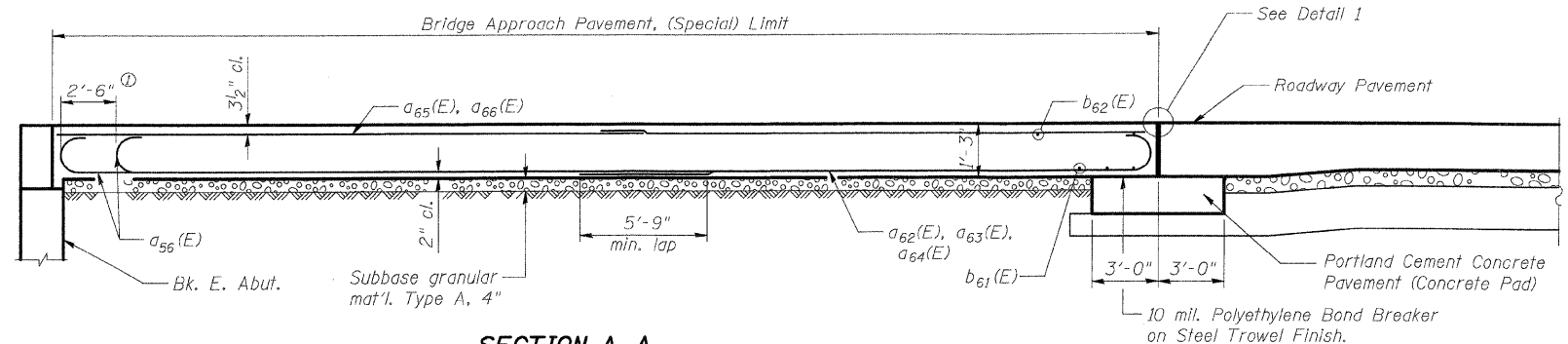
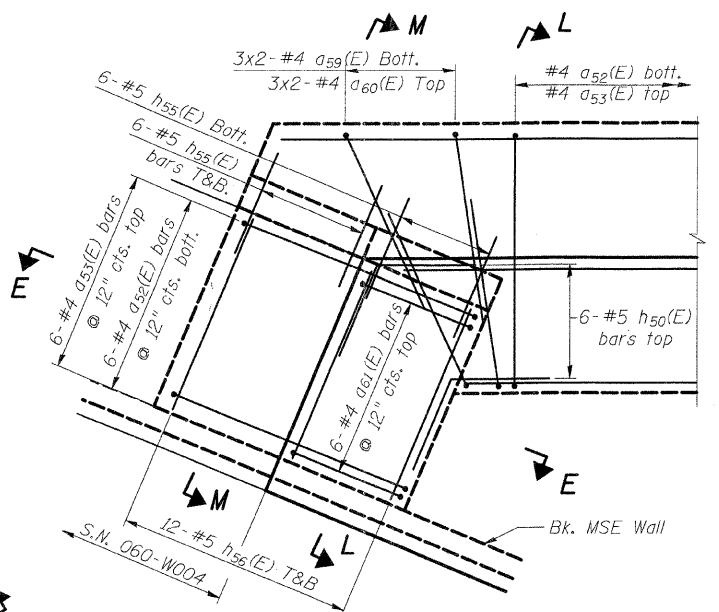


F.A.I. RTE.	SECTION	COUNTY	TOTAL SHEETS	SHEET NO.
70	*	MADISON	420	217
STA.	TO STA.			
FED. ROAD DIST. NO.	ILLINOIS	FED. AID PROJECT		
• 60-10K-1, 60-10HB CONTRACT NO. 76709				



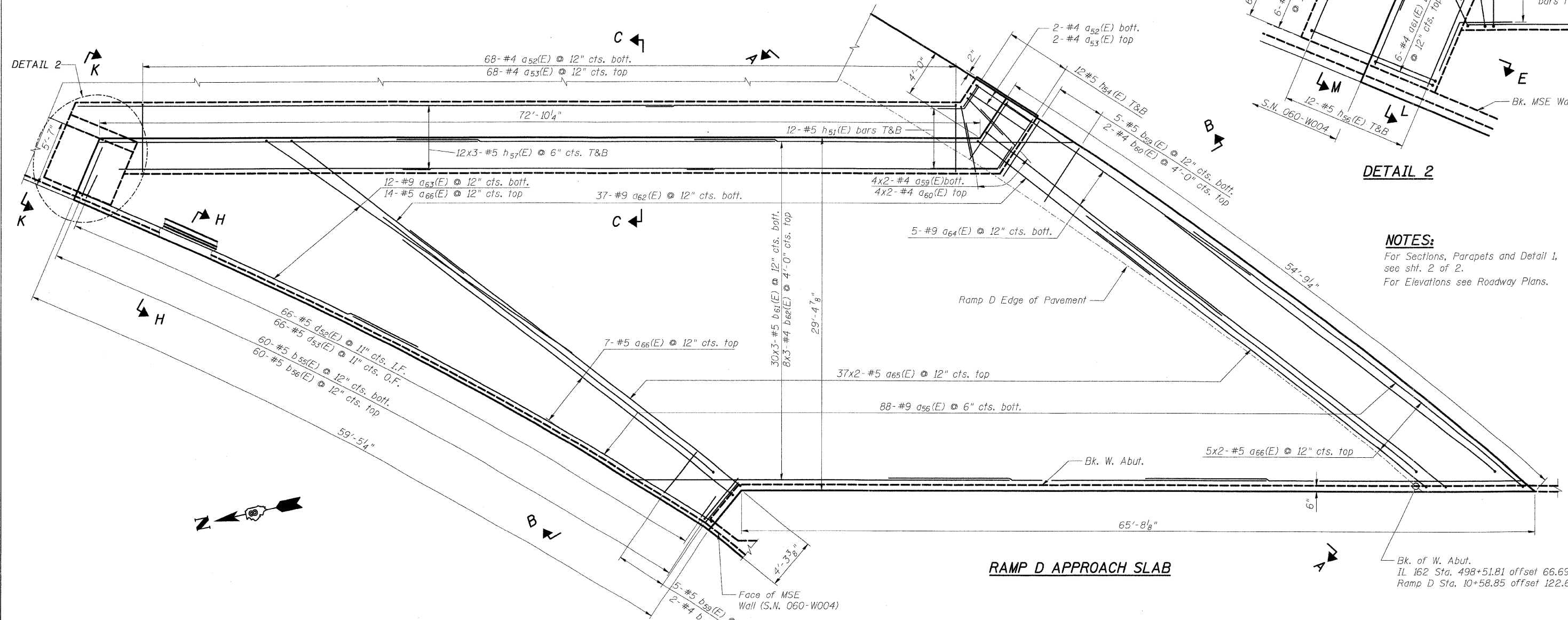
**SECTION A-A**

① Stagger #9 a56(E) bars as shown on plan - full width



**DETAIL 2**

**NOTES:**  
 For Sections, Parapets and Detail 1, see sht. 2 of 2.  
 For Elevations see Roadway Plans.



**RAMP D APPROACH SLAB**



SHT. 1 OF 2



REVISIONS	
NAME	DATE

ILLINOIS DEPARTMENT OF TRANSPORTATION  
 IL ROUTE 162 OVER I-55/70 IN TROY  
 F.A.I. ROUTE 70 SECTION 60-10K-1, 60-10HB  
 MADISON COUNTY STATION 499+48.35  
 STRUCTURE NO. 060-0338

**RAMP D APPROACH SLAB (SPECIAL)**  
 DESIGNED: JAW  
 DRAWN: BTO  
 CHECKED: BTO  
 DATE: 4/06