

**BENCH MARK**

CP#35, Iron Pin w/Cap, Sta. 502+30.81, 37.37' Rt, El. 582.812

**EXISTING STRUCTURE**

Structure S.N. 060-0139 was built in 1956 as U. S. Route 40 Bypass over F. A. Route 190 (U. S. Route 66). It was widened and the deck reconstructed in 1978. The four span structure was built on concrete piles at the abutments and timber piles at the piers. The composite reinforced concrete deck is supported by continuous steel beams that are 27" deep at the fascia and 30" deep elsewhere. The back to back abutment length is 194'-0" and the deck is 75'-2" out to out.

During construction of the new structure, staged construction will be utilized to maintain one lane of traffic in each direction.

No salvage.

Bk. of W. Abut.  
IL 162 Sta. 498+81.54 offset 80.65' Lt.  
Ramp A Sta. 25+22.85 offset 114.23' Lt.

© Brg. W. Abut.  
Sta. 498+68.35  
El. 587.70

Bk. of W. Abut.  
Sta. 498+65.29  
El. 587.67

STATION 499+48.35  
BUILT 200... BY  
STATE OF ILLINOIS  
F.A.I. RT. 70 SEC. 60-10HB  
LOADING HS20  
STR. NO. 060-0338

**NAME PLATE**

See Std. 515001

NOTE: For Name Plate location, see sht. S-59.

**LOADING HS20**

Allow 50 lbs/ft<sup>2</sup> future wearing surface

**DESIGN SPECIFICATION**

2002 AASHTO Std. Spec, 17th edition

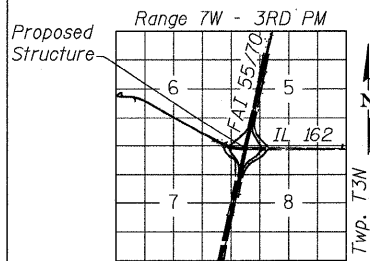
**DESIGN STRESSES**

**NEW CONSTRUCTION**

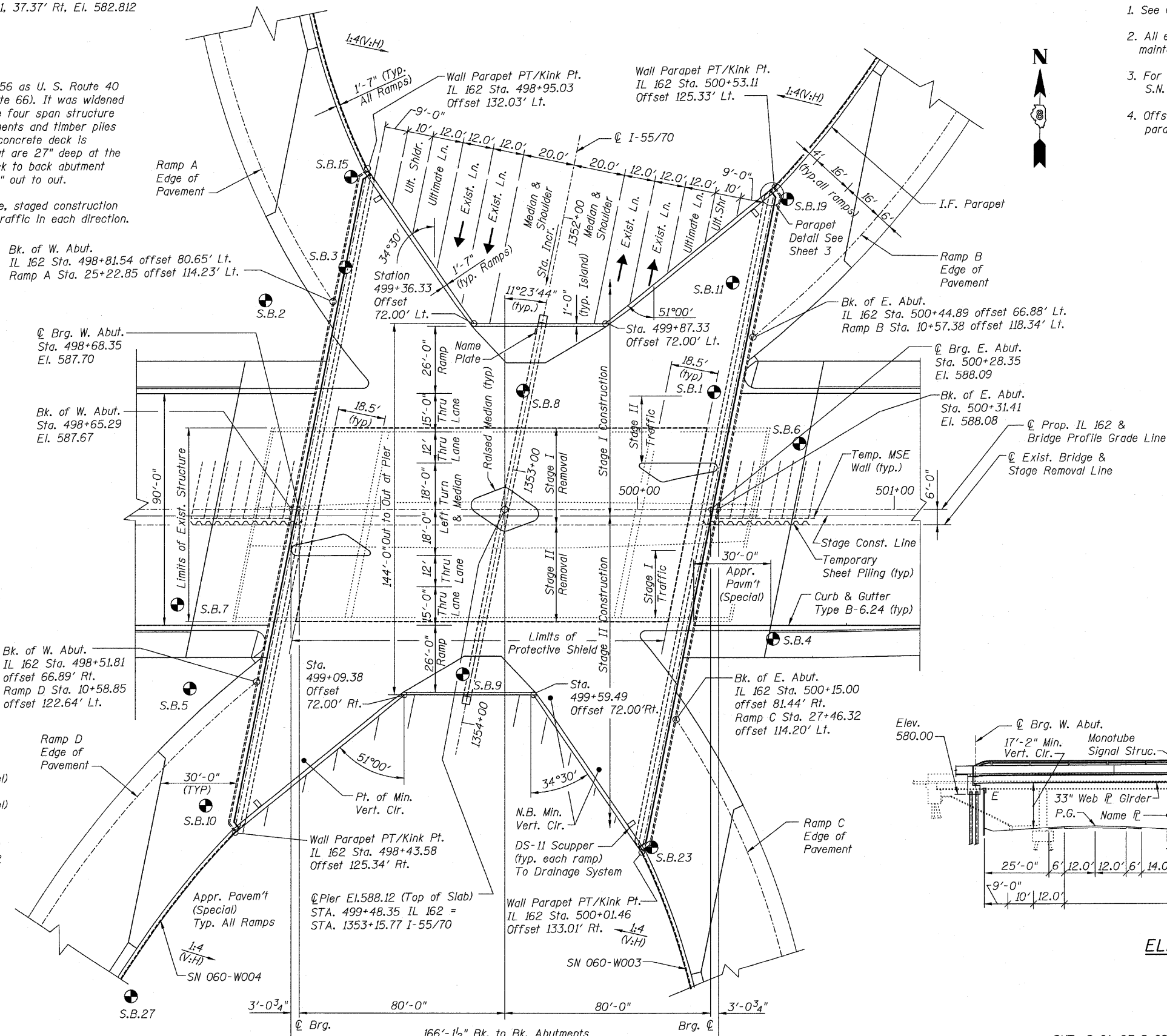
f'c = 3,500 psi (concrete)  
fy = 60,000 psi (reinforcement)  
fy = 36,000 psi (AASHTO M-270, Gr.36 struc. steel)  
fy = 50,000 psi (AASHTO M-270, Gr.50 struc. steel)

**SEISMIC DATA**

Seismic Performance Category (SPC)= B  
Bedrock Acceleration Coefficient (A)= .12  
Site Coefficient (S) = 1.5



**LOCATION SKETCH**



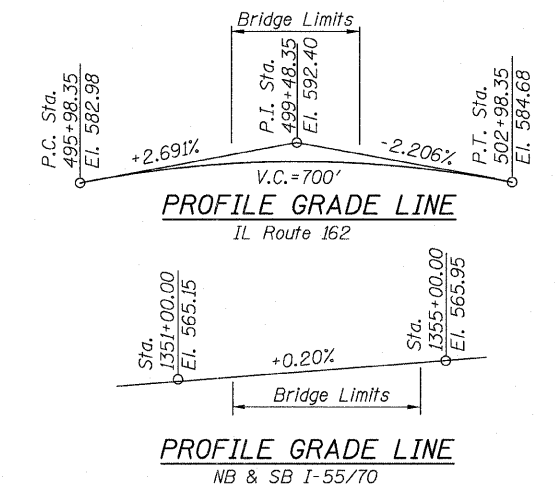
**PLAN**

**NOTES:**

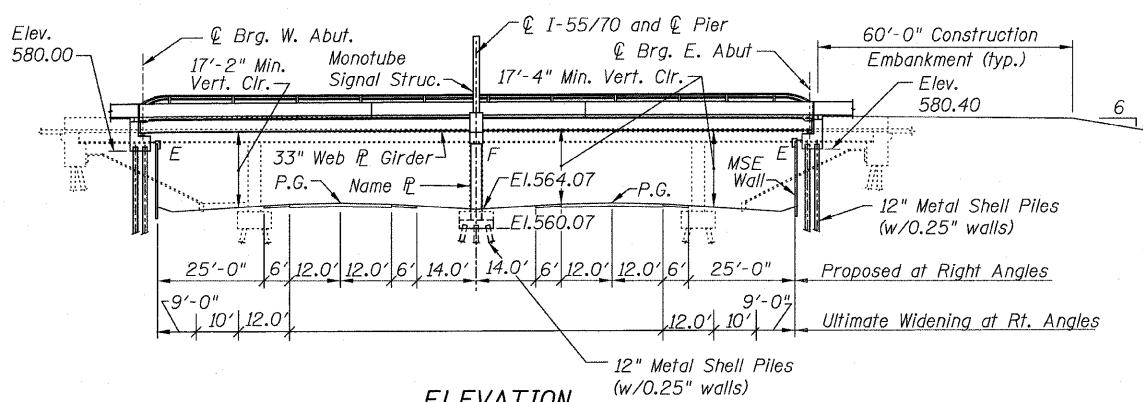
1. See General Notes on Sht. S-03.
2. All existing utilities attached to bridge shall be maintained during and after construction.
3. For ramp and abutment walls, see Dwg. for S.N. 060-W006 (east) and 060-W004 (west).
4. Offsets are measured from © IL Rt. 162 to back of parapet.

F.A.I. RTE.	SECTION	COUNTY	TOTAL SHEETS	SHEET NO.
70	60-10K-1,60-10HB	MADISON	420	219
STA.		TO STA.		
FED. ROAD DIST. NO.		ILLINOIS FED. AID PROJECT		

CONTRACT NO. 76709



**APPROVED**  
FOR STRUCTURAL ADEQUACY ONLY  
*Ralph E. Anderson*  
ENGINEER OF BRIDGES AND STRUCTURES



**ELEVATION**

REVISIONS	
NAME	DATE

ILLINOIS DEPARTMENT OF TRANSPORTATION  
IL ROUTE 162 OVER I-55/70 IN TROY  
F.A.I. ROUTE 70 SECTION 60-10K-1, 60-10HB  
MADISON COUNTY STATION 499+48.35  
STRUCTURE NO. 060-0338

STV Incorporated  
Engineers/Architects/Planners/Construction Managers  
200 W. Monroe Street, Suite 1650  
Chicago, IL 60606-3015  
312/553-0655, FAX 312/553-0661

GENERAL PLAN  
DESIGNED: AWH  
CHECKED: JAN  
DATE: 03/06  
DRAWN: BTO  
CHECKED: AWH

SHT. S-01 OF S-68