

F.A.I. RTE.	SECTION	COUNTY	TOTAL SHEETS	SHEET NO.
TO 60-10K-1.60-10HB	MADISON	420	223	
STA.	TO STA.			
FED. ROAD DIST. NO.	ILLINOIS	FED. AID PROJECT		

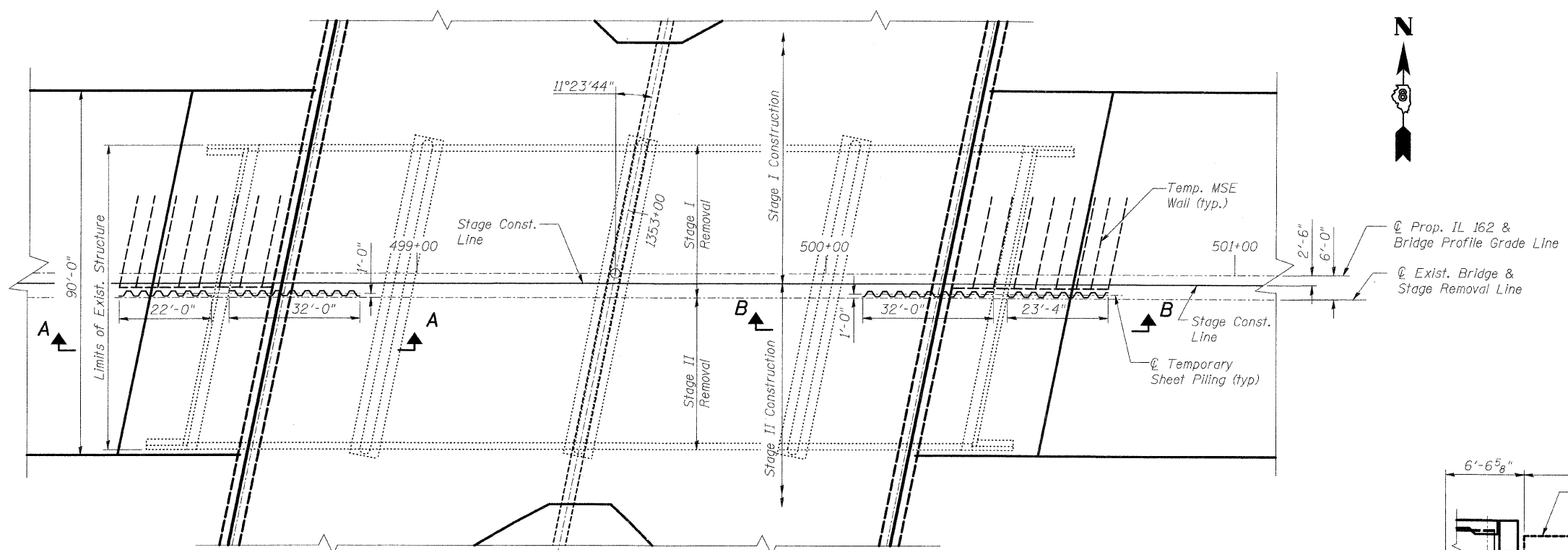
CONTRACT NO. 76709

BILL OF MATERIAL

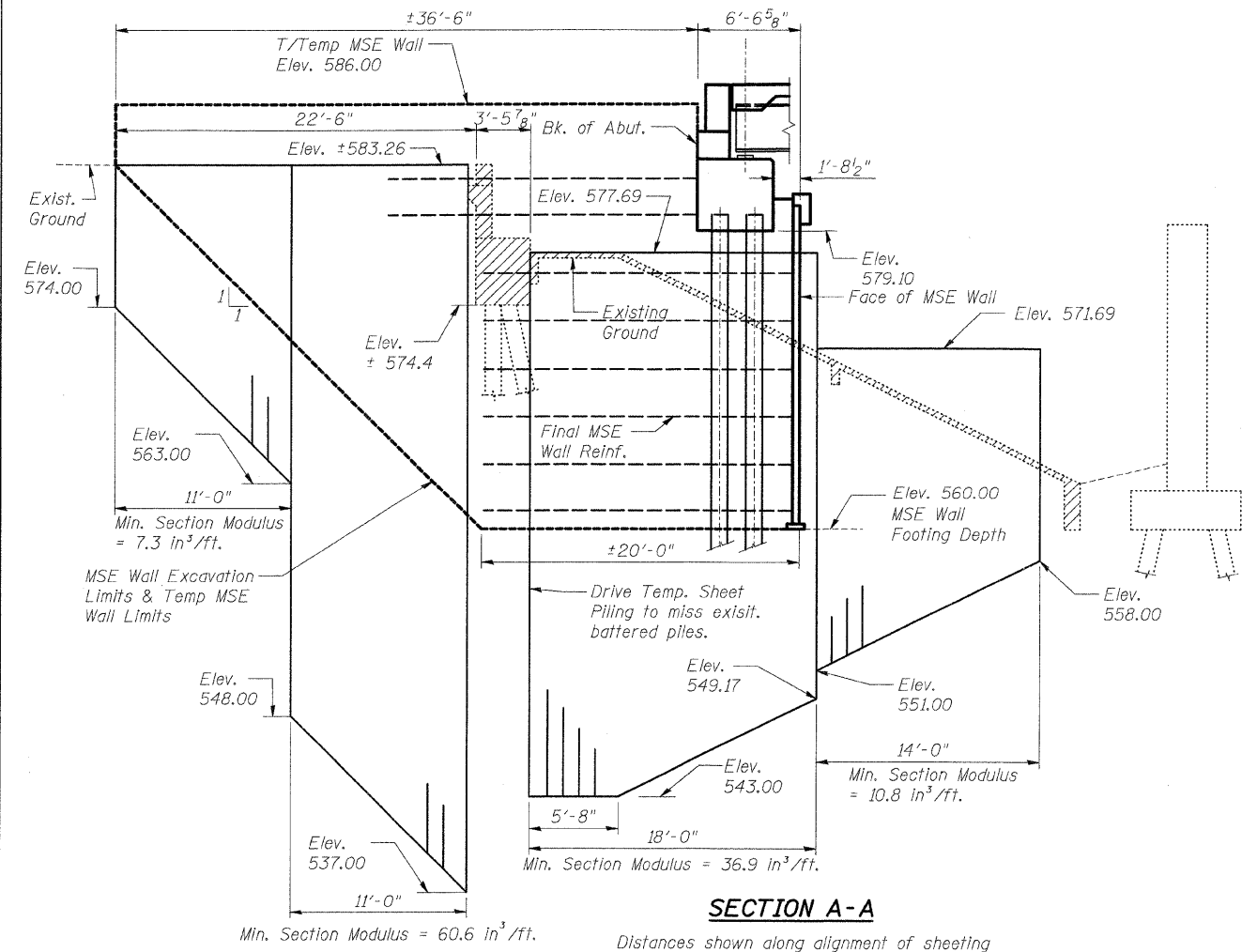
Item	Unit	Total
Temporary Sheet Piling	SQ FT	3000
Temporary Mechanically Stabilized Earth Wall	SQ FT	1600

NOTE:

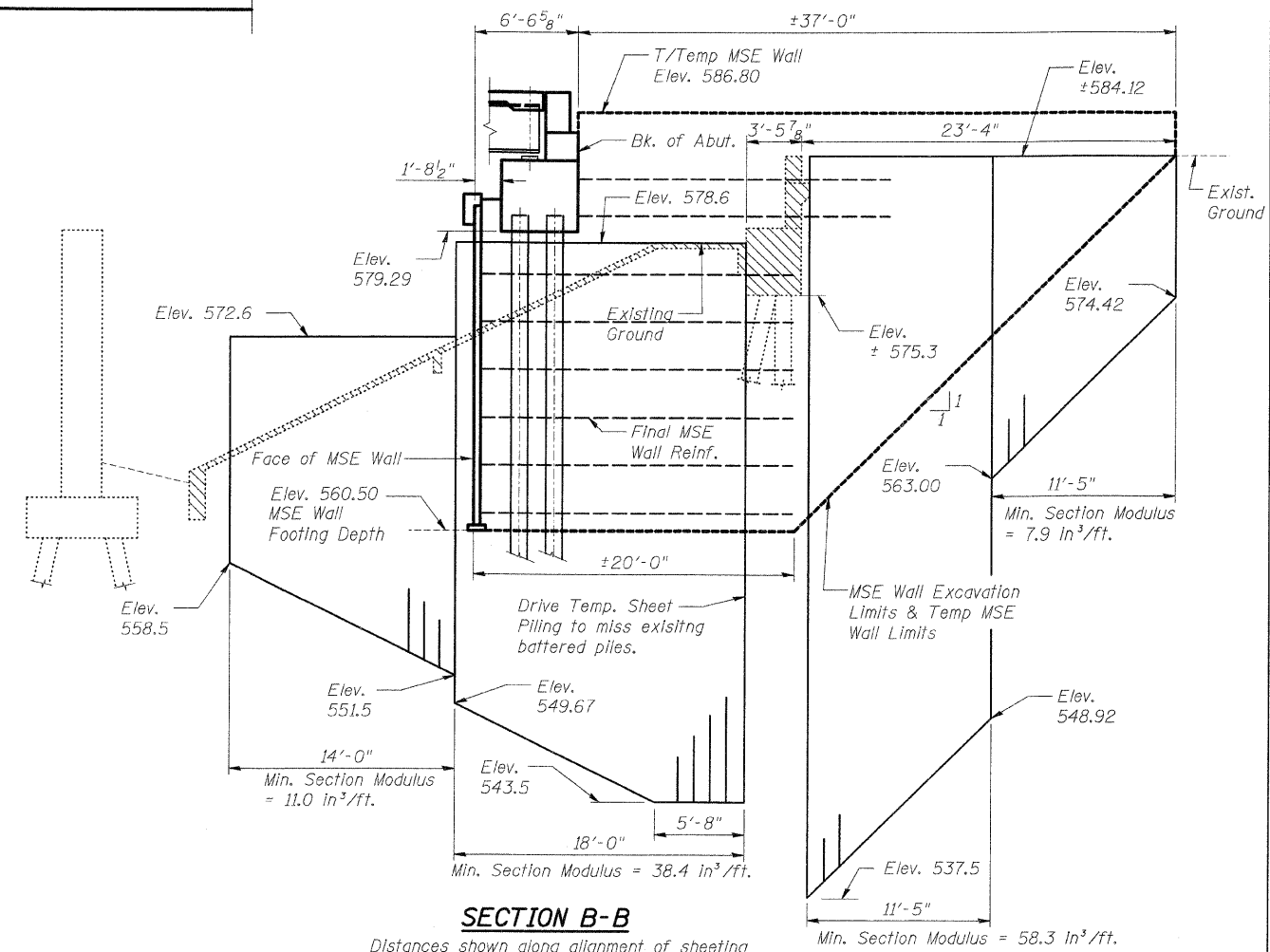
- If the Contractor chooses to alter the temporary cantilevered sheet piling design requirements shown on the plans, a design submittal including plan details and calculations will be required for review and acceptance by the engineer.
- See civil drawings for roadway soil retainage requirements.



PLAN - TEMP. SHEET PILING & TEMP. MSE WALL



SECTION A-A



SECTION B-B

Distances shown along alignment of sheeting

REVISIONS	
NAME	DATE

ILLINOIS DEPARTMENT OF TRANSPORTATION
 IL ROUTE 162 OVER I-55/70 IN TROY
 F.A.I. ROUTE 70 SECTION 60-10K-1, 60-10HB
 MADISON COUNTY STATION 499+48.35
 STRUCTURE NO. 060-0338
**TEMPORARY SHEET PILING
 & TEMPORARY MSE WALL**
 DESIGNED: BTO DRAWN: BTO
 CHECKED: AWH CHECKED: AWH
 DATE: 03/06

SHT. S-05 OF S-68

STV Incorporated
 Engineers/Architects/Planners/Construction Managers
 200 W. Monroe Street, Suite 1650
 Chicago, IL 60606-8015
 312/553-0655, FAX 312/553-0661