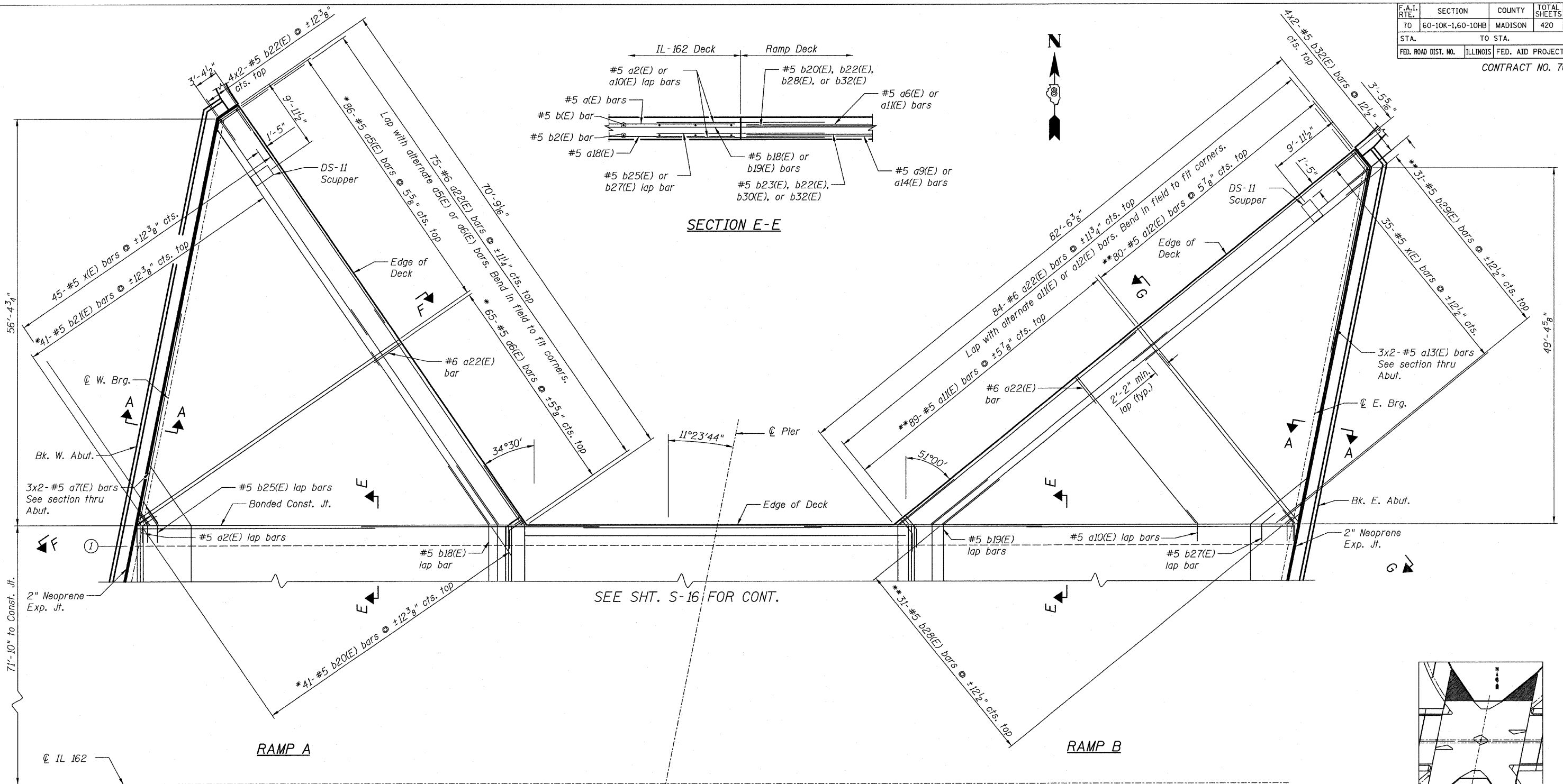


F.A.I. RTE.	SECTION	COUNTY	TOTAL SHEETS	SHEET NO.
70	60-10K-1,60-10HB	MADISON	420	235
STA.	TO STA.			
FED. ROAD DIST. NO.	ILLINOIS	FED. AID PROJECT		

CONTRACT NO. 76709



SECTION E-E

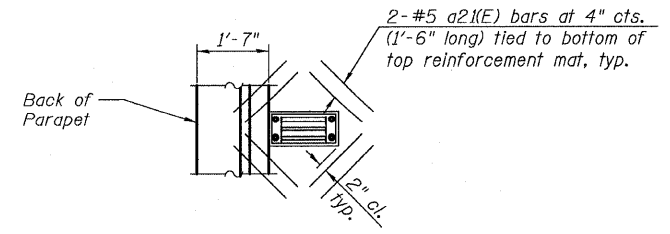
SEE SHT. S-16 FOR CONT.

DECK PLAN - RAMPS A & B TOP BARS

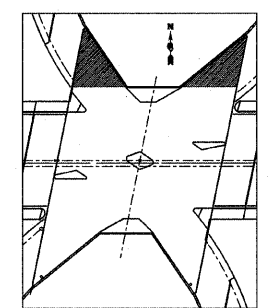
*Order a5(E), a6(E), b20(E), & b21(E) bars full length. Cut to fit skew and use remainder of bars in Ramp C.

**Order a11(E), a12(E), b28(E), & b29(E) bars full length. Cut to fit skew and use remainder of bars in Ramp D.

- NOTES:**
1. Bars designated (E) shall be Epoxy Coated
 2. See Sht. S-22 for sections F-F & G-G.
 3. For section thru ramp parapet see Sht. S-24.
 4. For Parapet Elevation see Sht. S-28.
 5. For Reinforcement Bar List and BOM, see Sht. S-31.
 6. For Scupper Details, see Sht. S-35.
 7. For Section thru Abut., see Sht. S-24.



PLAN AT SCUPPER (TYP.)



KEY PLAN

REVISIONS	
NAME	DATE

SHT. S-17 OF S-68

STV Incorporated
Engineers/Architects/Planners/Construction Managers
 200 W. Monroe Street, Suite 1650
 Chicago, IL 60606-9015
 312/553-0655, FAX 312/553-0661

ILLINOIS DEPARTMENT OF TRANSPORTATION
 IL ROUTE 162 OVER I-55/70 IN TROY
 F.A.I ROUTE 70 SECTION 60-10K-1, 60-10HB
 MADISON COUNTY STATION 499+48.35
 STRUCTURE NO. 060-0338
 DECK PLAN
 RAMPS A & B - TOP BARS
 DESIGNED: BTO DRAWN: BTO
 CHECKED: JAW CHECKED: JAW
 DATE: 03/06