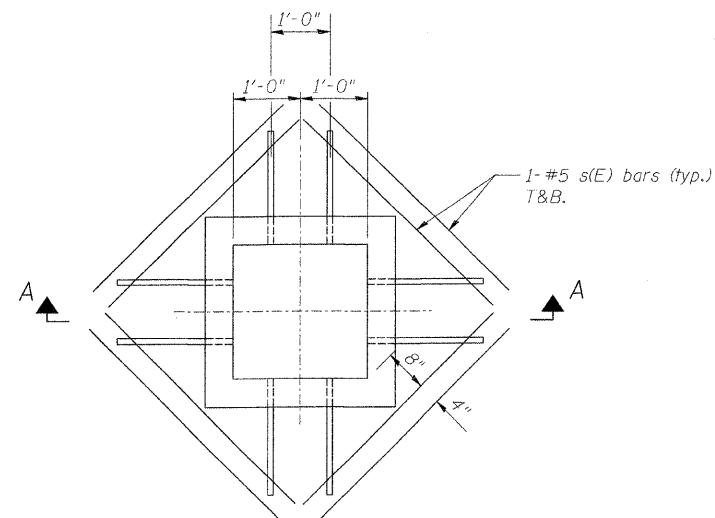
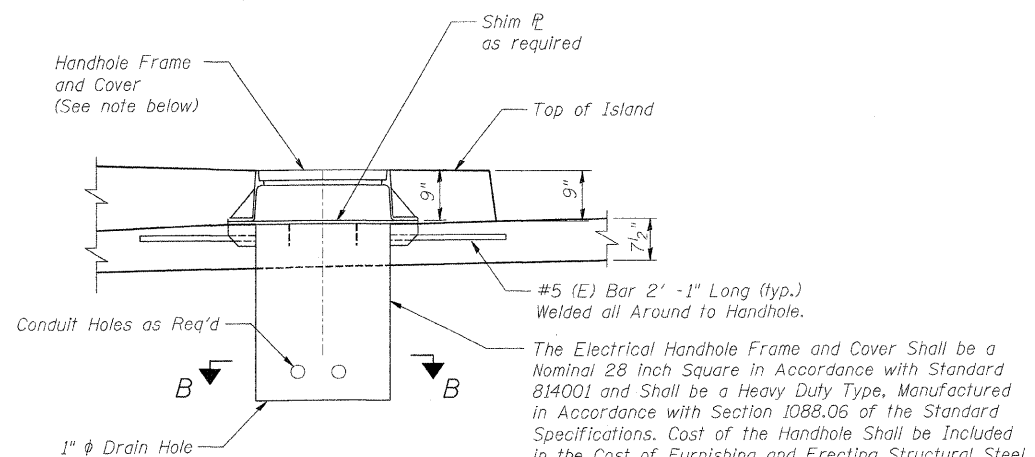


F.A.I. RTE.	SECTION	COUNTY	TOTAL SHEETS	SHEET NO.
70	60-10K-1,60-10HB	MADISON	420	243
STA.	TO STA.			
FED. ROAD DIST. NO.	ILLINOIS	FED. AID PROJECT		

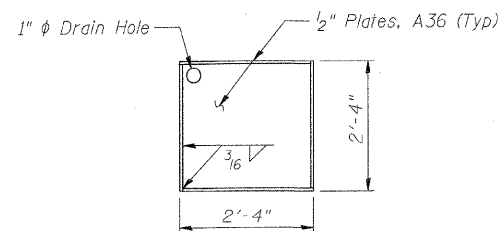
CONTRACT NO. 76709



PLAN



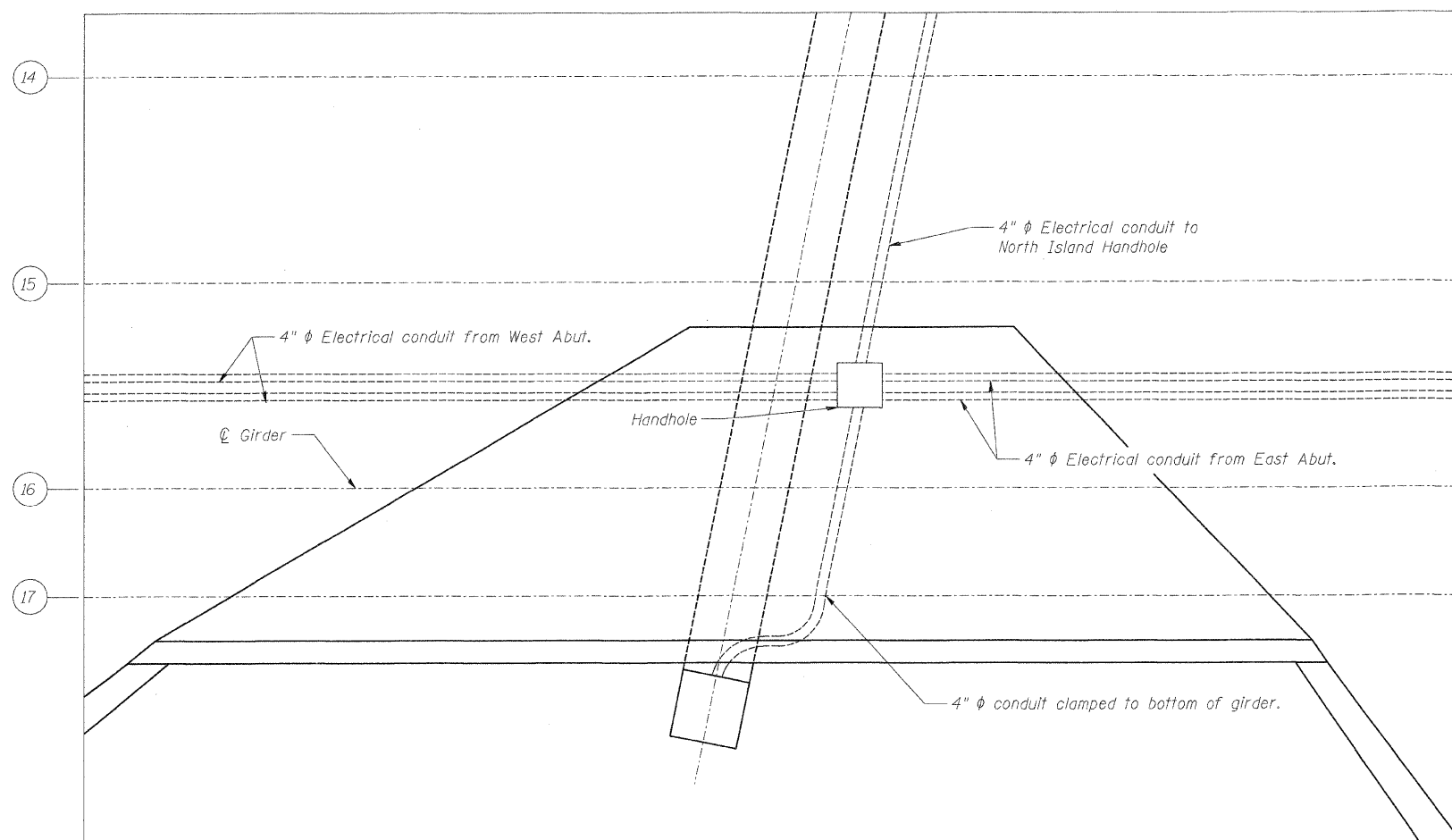
SECTION A-A
HANDHOLE INSTALLATION



SECTION B-B

NOTE:

The Handhole and Handhole Frame and Cover shall be installed level. The deck and sidewalk concrete shall be placed to match the flange plate of the handhole and the rim of the frame and cover.



PLAN - CONDUIT LOCATION

South end shown, North end similar

REVISIONS	
NAME	DATE

ILLINOIS DEPARTMENT OF TRANSPORTATION
 IL ROUTE 162 OVER I-55/70 IN TROY
 F.A.I ROUTE 70 SECTION 60-10K-1, 60-10HB
 MADISON COUNTY STATION 499+48.35
 STRUCTURE NO. 060-0338
 ELECTRICAL DETAILS
 DESIGNED: BTO DRAWN: BTO
 CHECKED: BG CHECKED: BG
 DATE: 03/06

SHT. S-25 OF S-68

STV Incorporated
 Engineers/Architects/Planners/Construction Managers
 200 W. Monroe Street, Suite 1650
 Chicago, IL 60606-3015
 312/553-0653, FAX 312/553-0661