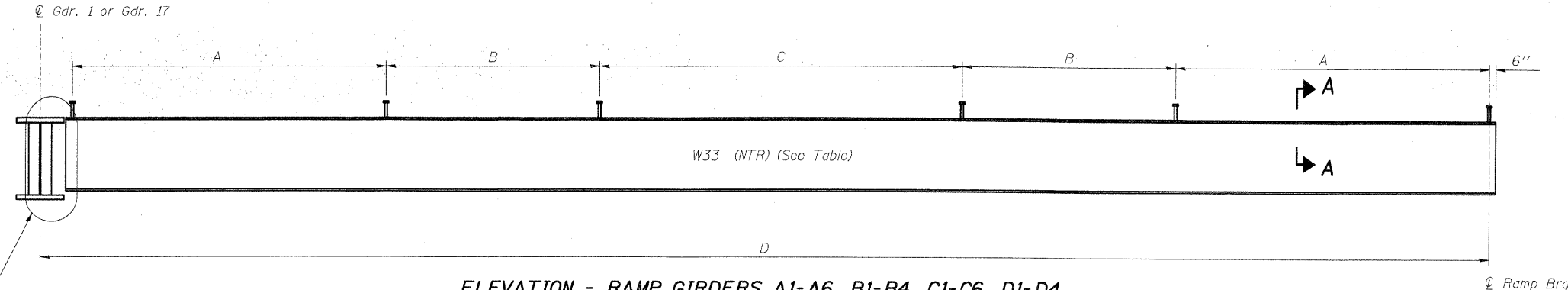


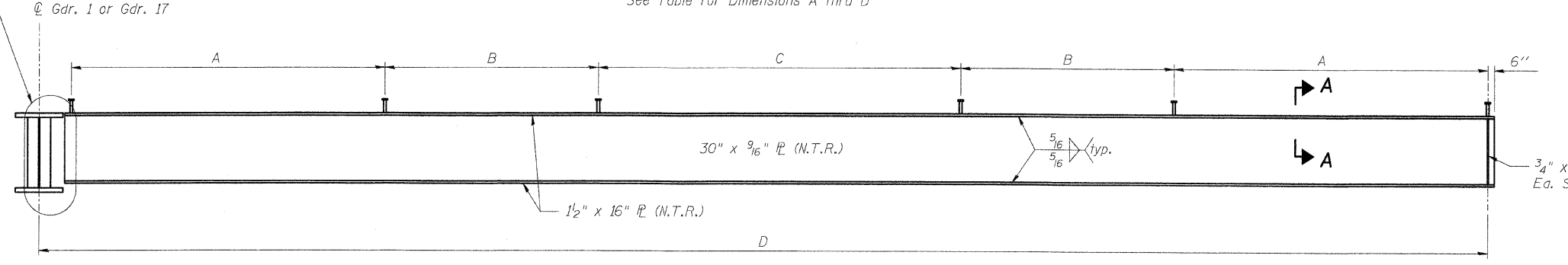
F.A.I. RTE.	SECTION	COUNTY	TOTAL SHEETS	SHEET NO.
TO	60-10K-1,60-10HB	MADISON	420	262
STA.	TO STA.			
FED. ROAD DIST. NO.	ILLINOIS FED. AID PROJECT			

CONTRACT NO. 76709



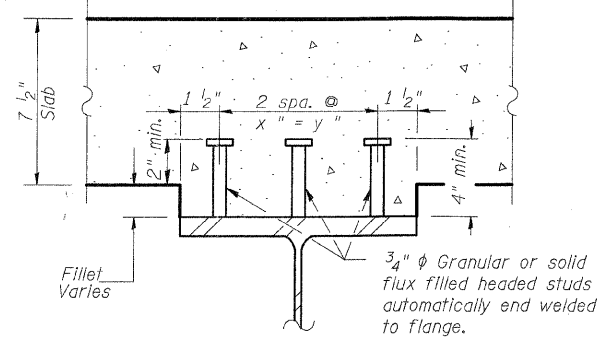
**ELEVATION - RAMP GIRDERS A1-A6, B1-B4, C1-C6, D1-D4**

See Table for Dimensions A thru D



**ELEVATION - RAMP GIRDERS B5 & D5**

See Table for Dimensions A thru D



**SECTION A-A**

SIZE	x	y
W33x118	4 1/4"	8 1/2"
W33x152	4 1/4"	8 1/2"
33" P.G.	6 1/2"	13"

See Detail 1 Sht. S-49

**RAMP GIRDERS**

GIRDER	SIZE	A	B	C	D
A1	W33x118	3 sp. @ 14" = 3'-6"	-	-	8'-8 5/8"
A2	W33x118	12 sp. @ 4" = 4'-0"	10 sp. @ 4" = 3'-4"	10 sp. @ 5" = 4'-2"	21'-1 3/4"
A3	W33x118	10 sp. @ 6" = 5'-0"	11 sp. @ 7" = 6'-5"	14 sp. @ 7" = 8'-2"	33'-6 7/8"
A4	W33x118	20 sp. @ 6" = 10'-0"	6 sp. @ 10" = 5'-0"	10 sp. @ 10" = 8'-4"	45'-11 7/8"
A5	W33x118	25 sp. @ 6" = 12'-6"	14 sp. @ 8" = 9'-4"	13 sp. @ 11" = 11'-11"	58'-5"
A6	W33x152	30 sp. @ 6" = 15'-0"	18 sp. @ 8" = 12'-0"	14 sp. @ 12" = 14'-0"	70'-10 1/8"

GIRDER	SIZE	A	B	C	D
B1	W33x118	5 sp. @ 12" = 5'-0"	-	-	13'-2 1/2"
B2	W33x118	11 sp. @ 6" = 5'-6"	11 sp. @ 6" = 5'-6"	11 sp. @ 6" = 5'-6"	30'-3 1/2"
B3	W33x118	22 sp. @ 7" = 12'-10"	8 sp. @ 10" = 6'-8"	6 sp. @ 10" = 5'-0"	47'-4 3/4"
B4	W33x152	25 sp. @ 7" = 14'-7"	12 sp. @ 9" = 9'-0"	14 sp. @ 12" = 14'-0"	64'-6"
B5	P.G.	30 sp. @ 7" = 17'-6"	15 sp. @ 10" = 12'-6"	15 sp. @ 14" = 17'-6"	81'-7 1/4"

GIRDER	SIZE	A	B	C	D
C1	W33x118	4 sp. @ 12" = 4'-0"	-	-	9'-11"
C2	W33x118	12 sp. @ 4" = 4'-0"	10 sp. @ 5" = 4'-2"	9 sp. @ 5" = 3'-9"	22'-2 1/8"
C3	W33x118	10 sp. @ 6" = 5'-0"	11 sp. @ 7" = 6'-5"	16 sp. @ 7" = 9'-4"	34'-9 1/8"
C4	W33x118	20 sp. @ 6" = 10'-0"	12 sp. @ 8" = 8'-0"	10 sp. @ 10" = 8'-4"	47'-2 1/4"
C5	W33x118	25 sp. @ 6" = 12'-6"	14 sp. @ 8" = 9'-4"	14 sp. @ 11" = 12'-10"	59'-7 3/8"
C6	W33x152	30 sp. @ 6" = 15'-0"	18 sp. @ 8" = 12'-0"	15 sp. @ 12" = 15'-0"	72'-0 3/8"

GIRDER	SIZE	A	B	C	D
D1	W33x118	5 sp. @ 12" = 5'-0"	-	-	13'-2 3/8"
D2	W33x118	11 sp. @ 6" = 5'-6"	11 sp. @ 6" = 5'-6"	11 sp. @ 6" = 5'-6"	30'-3 5/8"
D3	W33x118	22 sp. @ 7" = 12'-10"	8 sp. @ 10" = 6'-8"	6 sp. @ 10" = 5'-0"	47'-4 7/8"
D4	W33x152	25 sp. @ 7" = 14'-7"	12 sp. @ 9" = 9'-0"	14 sp. @ 12" = 14'-0"	64'-6 1/8"
D5	P.G.	30 sp. @ 7" = 17'-6"	15 sp. @ 10" = 12'-6"	15 sp. @ 14" = 17'-6"	81'-7 3/8"

**TOP OF GIRDER ELEVATIONS**

(For Fabrication Only)

GIRDER	W. ABUT. BRG.	CL GIRDER 1
A1	585.771	585.928
A2	585.581	585.985
A3	585.390	586.036
A4	585.199	586.082
A5	585.007	586.122
A6	584.816	586.156

GIRDER	E. ABUT. BRG.	CL GIRDER 17
C1	586.066	586.219
C2	585.865	586.232
C3	585.665	586.238
C4	585.463	586.239
C5	585.262	586.234
C6	585.060	586.224

GIRDER	E. ABUT. BRG.	CL GIRDER 1
B1	585.965	586.150
B2	585.740	586.185
B3	585.515	586.212
B4	585.290	586.229

GIRDER	W. ABUT. BRG.	CL GIRDER 17
D1	585.500	585.736
D2	585.265	585.825
D3	585.030	585.905
D4	584.794	585.977

**TOP OF WEB ELEVATIONS**

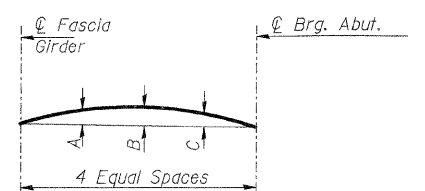
(For Fabrication Only)

GIRDER	E. ABUT. BRG.	CL GIRDER 1
B5	584.918	586.113

GIRDER	W. ABUT. BRG.	CL GIRDER 17
D5	584.412	585.915

**BILL OF MATERIAL**

Item	Unit	Total
Stud Shear Connectors	Each	4341



**CAMBER DIAGRAM**

GIRDER	A	B	C
B5 & D5	1 3/8"	2 3/8"	1 3/8"

**CAMBER VALUES**

(Dimensions in inches)

**NOTES:**

- All structural steel shall meet notch toughness requirements (N.T.R.).
- All steel shown on this sheet shall be AASHTO M270 Grade 50.
- See Sht. S-49 for ramp connection detail.
- See Shts. S-50 for floating bearing details.
- See Shts. S-48 & S-49 for diaphragm locations.

REVISIONS	
NAME	DATE

ILLINOIS DEPARTMENT OF TRANSPORTATION  
 IL ROUTE 162 OVER I-55/70 IN TROY  
 F.A.I ROUTE 70 SECTION 60-10K-1, 60-10HB  
 MADISON COUNTY STATION 499+48.35  
 STRUCTURE NO. 060-0338  
**ELEVATION - RAMP GIRDERS**  
**TOP OF GIRDER ELEVATIONS**  
 DESIGNED: JAN  
 DRAWN: BTO  
 DATE: 03/06  
 CHECKED: BTO  
 CHECKED: JAN

SHT. S-44 OF S-68

**STV Incorporated**  
 Engineers/Architects/Planners/Construction Managers  
 200 W. Monroe Street, Suite 1650  
 Chicago, IL 60606-2015  
 312/933-0655, FAX 312/553-0661