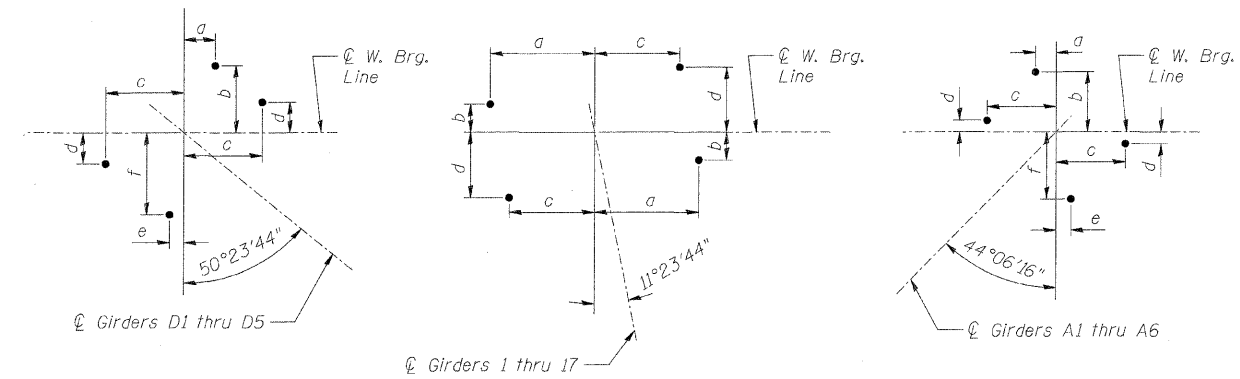


F.A.I. RTE.	SECTION	COUNTY	TOTAL SHEETS	SHEET NO.
70	60-10K-1,60-10HB	MADISON	420	276
STA.	TO STA.			
FED. ROAD DIST. NO.	ILLINOIS FED. AID PROJECT			
CONTRACT NO. 76709				

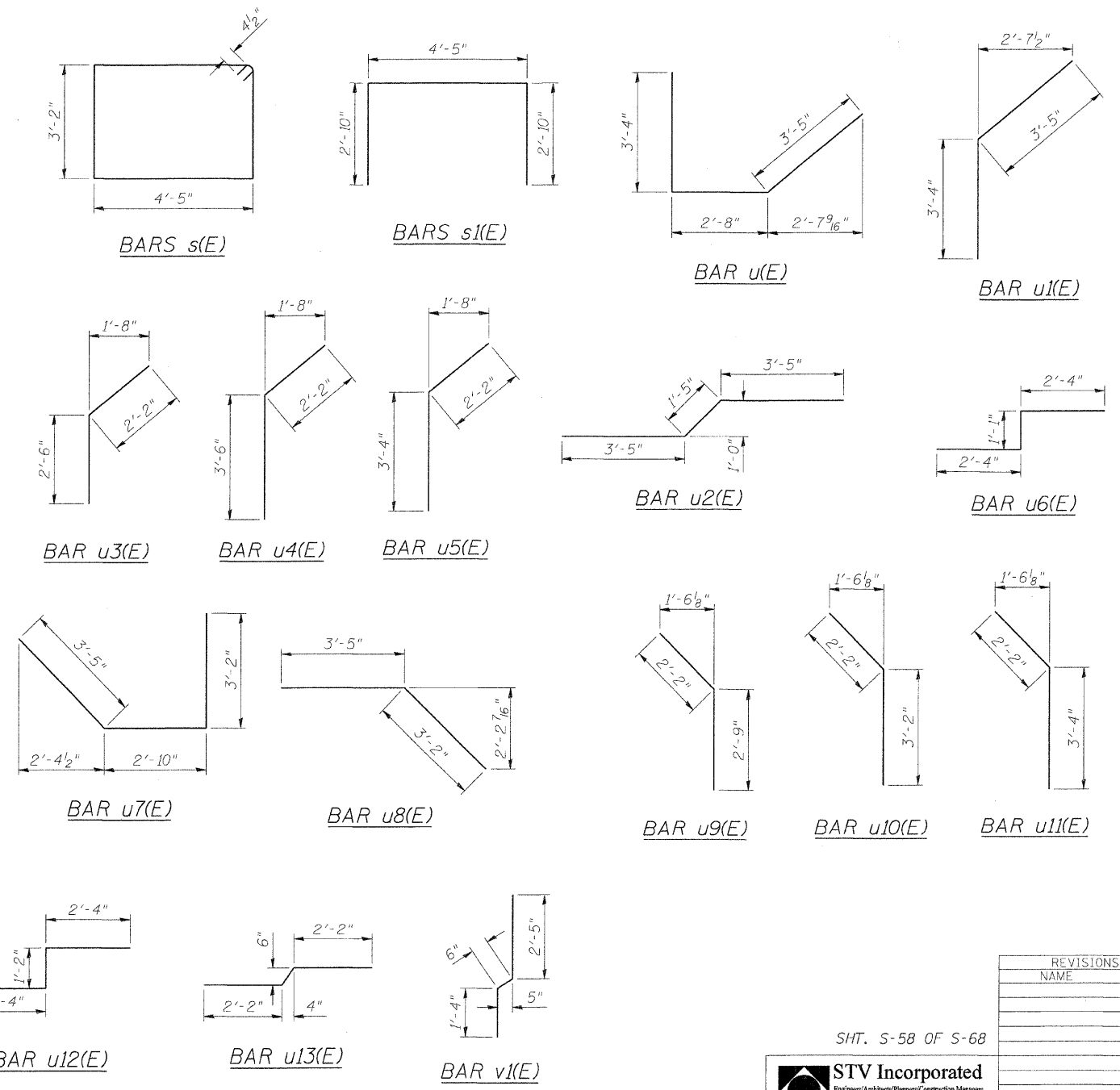
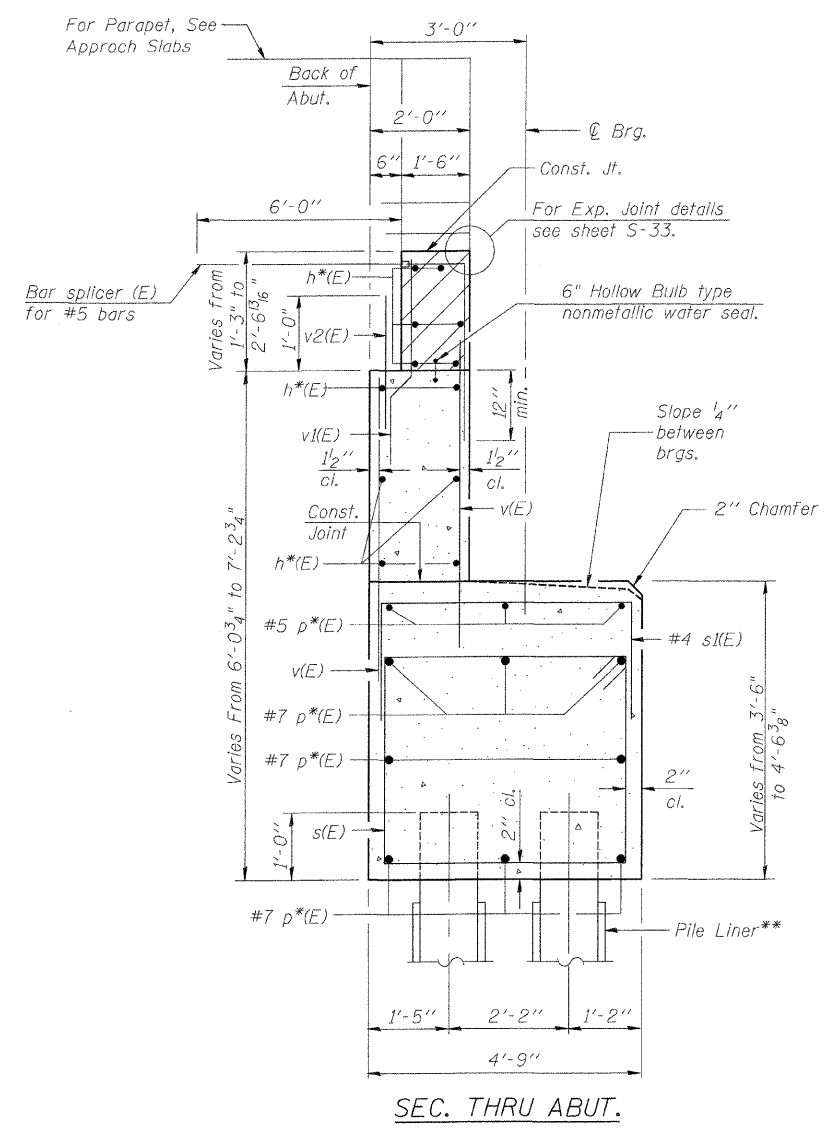
**BILL OF MATERIAL**

Bar	No.	Size	Length	Shape
h9(E)	12	#5	30'-1"	
h10(E)	18	#5	26'-8"	
h11(E)	12	#5	30'-3"	
h12(E)	18	#5	27'-6"	
h13(E)	2	#5	21'-0"	
h14(E)	12	#5	27'-11"	
h15(E)	18	#5	24'-11"	
h16(E)	12	#5	26'-8"	
h17(E)	18	#5	25'-7"	
p13(E)	16	#7	37'-6"	
p14(E)	16	#7	36'-7"	
p15(E)	6	#5	28'-0"	
p16(E)	3	#5	19'-0"	
p17(E)	3	#5	20'-0"	
p18(E)	3	#5	16'-3"	
p19(E)	16	#7	33'-1"	
p20(E)	16	#7	34'-1"	
p21(E)	6	#5	21'-3"	
p22(E)	3	#5	9'-6"	
p23(E)	3	#5	20'-8"	
p24(E)	3	#5	29'-8"	
s(E)	329	#4	15'-11"	
s1(E)	194	#4	10'-1"	
u(E)	3	#7	9'-5"	
u1(E)	3	#7	6'-9"	
u2(E)	6	#7	8'-3"	
u3(E)	6	#5	4'-8"	
u4(E)	3	#5	5'-8"	
u5(E)	3	#5	5'-6"	
u6(E)	4	#5	5'-9"	
u7(E)	3	#7	9'-5"	
u8(E)	3	#7	6'-7"	
u9(E)	6	#5	4'-11"	
u10(E)	3	#5	5'-4"	
u11(E)	3	#5	5'-6"	
u12(E)	4	#5	5'-10"	
u13(E)	4	#5	4'-11"	
v(E)	530	#5	4'-10"	
v1(E)	265	#4	4'-3"	
v2(E)	265	#5	2'-6"	
Concrete Structures	Cu. Yd.	218		
Reinforcement Bars, Epoxy Coated	Pound	18,160		
Test Pile Metal Shell	Each	1		
Furnishing Metal Pile Shells 12" x 0.250"	Foot	5,676		
Driving Piles	Foot	5,676		



GIRDER	a	b	c	d	e	f
D1,D2	19 1/8"	8 3/4"	8 5/8"	3 5/8"	1 9/16"	8 3/4"
D3	1 1/4"	9"	8 5/8"	2 7/8"	1 1/4"	9 1/8"
D4	1 1/4"	9"	9"	2 5/8"	7/8"	9 5/8"
D5	4 3/4"	9"	10 1/8"	4 1/8"	2 1/8"	11 5/8"
1,17	14"	3 1/8"	11 1/8"	8 1/8"	-	-
2,16	10 5/8"	3 9/8"	8 1/8"	7 1/2"	-	-
3-15	7 3/8"	2 1/8"	7 3/8"	5 5/8"	-	-
A1,A2	2 1/2"	8 3/8"	8 3/8"	2 1/2"	2 1/2"	8 3/8"
A3,A4	2 1/4"	8 7/8"	8 5/8"	1 5/8"	2 1/4"	8 7/8"
A5,A6	2 1/8"	9"	9 1/4"	1 5/8"	1 5/8"	9 3/8"

**ANCHOR BOLT LAYOUT WEST ABUTMENT**



- NOTES:**
- Hatched area to be poured after superstructure falsework has been removed. Quantity of concrete included with Concrete Superstructure.
  - \* - Indicates for bar designation see abutment plan and elevation.
  - \*\* - Pile Liner shall be included in the cost of "Furnishing Metal Pile Shells 12". Do not fill annulus between pile and pile liner. Provide filter fabric around top of liner.
  - Reinforcement bars designated (E) shall be epoxy coated.
  - For details of Bar splicers, see Sht. S-63.

SHT. S-58 OF S-68

**STV Incorporated**  
 Engineers/Architects/Planners/Contractors Managers  
 200 W. Monroe Street, Suite 1650  
 Chicago, IL 60606-5015  
 312/833-0655, FAX 312/553-0661

REVISIONS	
NAME	DATE

ILLINOIS DEPARTMENT OF TRANSPORTATION  
 IL ROUTE 162 OVER I-55/70 IN TROY  
 F.A.I ROUTE 70 SECTION 60-10K-1, 60-10HB  
 MADISON COUNTY STATION 499+48.35  
 STRUCTURE NO. 060-0338

**WEST ABUTMENT DETAILS**

DESIGNED: JAW      DRAWN: BTO  
 DATE: 03/06      CHECKED: BTO      CHECKED: JAW