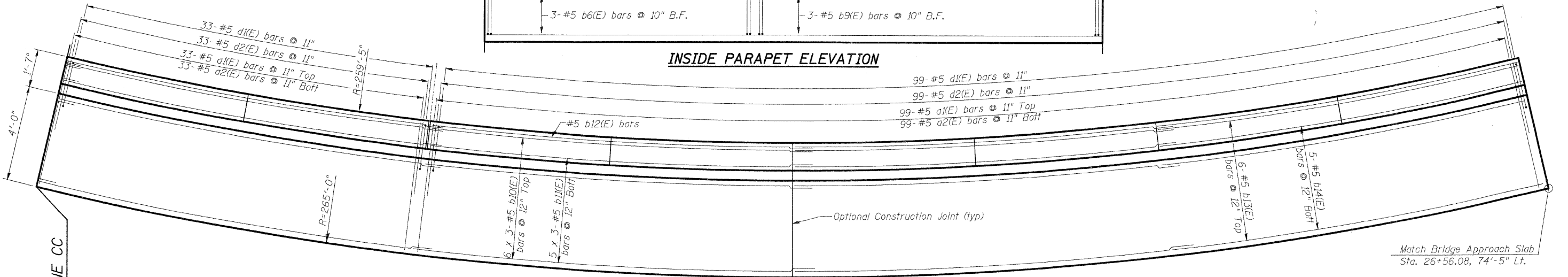
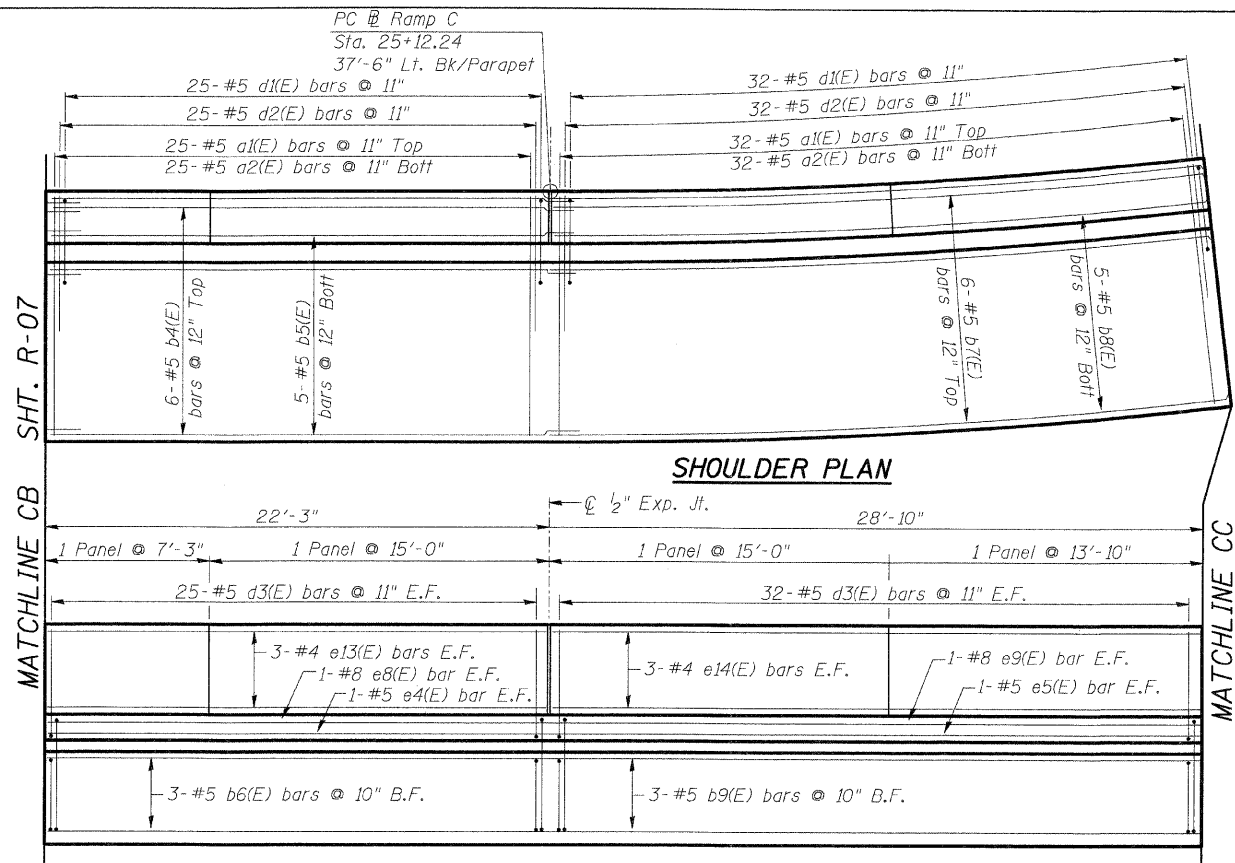


F.A.I. RTE.	SECTION	COUNTY	TOTAL SHEETS	SHEET NO.
70		MADISON	420	308
STA.		TO STA.		
FED. ROAD DIST. NO.		ILLINOIS	FED. AID PROJECT	
60-10K-1, 60-10HB		CONTRACT NO. 76709		



**INSIDE PARAPET ELEVATION**

**MIN. BAR LAP**

- #4 - 1'-4"
- #5 - 2'-2"
- #8 - 4'-6"

Sht. R-08 of R-13

**STV Incorporated**  
 Engineers/Architects/Planners/Construction Managers  
 200 W. Monroe Street, Suite 1650  
 Chicago, IL 60606-5015  
 312/553-0658, FAX 312/553-0661

REVISIONS	
NAME	DATE

ILLINOIS DEPARTMENT OF TRANSPORTATION  
 IL ROUTE 162 OVER I-55/70 IN TROY  
 F.A.I ROUTE TO SECTION 60-10K-1, 60-10HB  
 MADISON COUNTY STA. 17+40 TO STA. 22+50  
 STRUCTURE NO. 060-W006

**PARAPET ELEVATIONS & SHOULDER PLANS  
 RAMP C**

DATE: 05/2006

DRAWN BY: KM  
 CHECKED BY: BJG